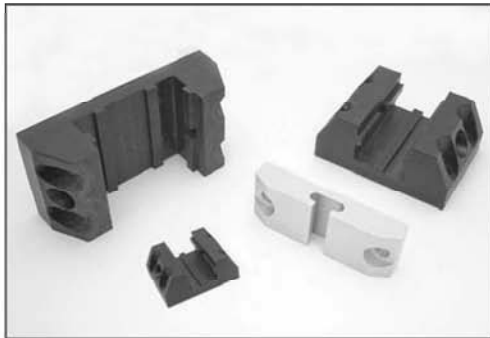


SECTION 8

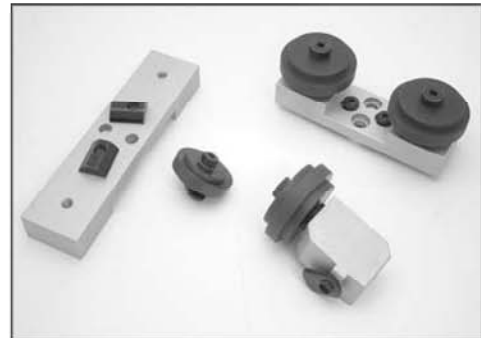
15 SERIES

LINEAR MOTION

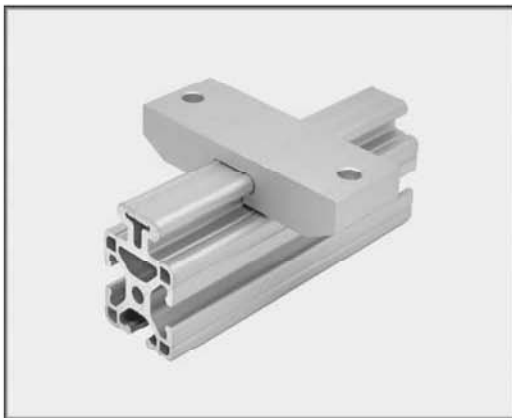
LINEAR BEARINGS



ROLLER WHEELS, ROLLER BRACKETS



LINEAR GUIDE RAIL



LINEAR BEARING BRAKE KITS

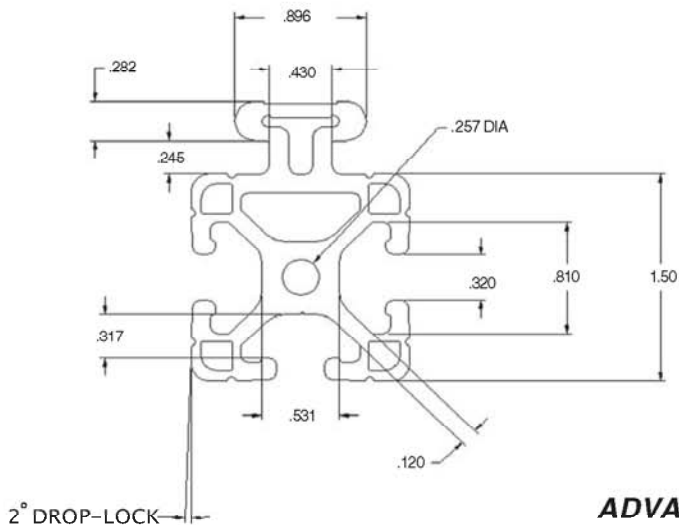


Linear Motion

15 SERIES T-SLOTTED LINEAR GUIDE RAIL REVOLUTIONARY TO THE T-SLOT MARKET



INTEGRATE LINEAR
MOTION DIRECTLY
INTO FAZTEK FRAMES



See page 4 for details
on the drop-lock feature

MATERIAL SPECIFICATIONS

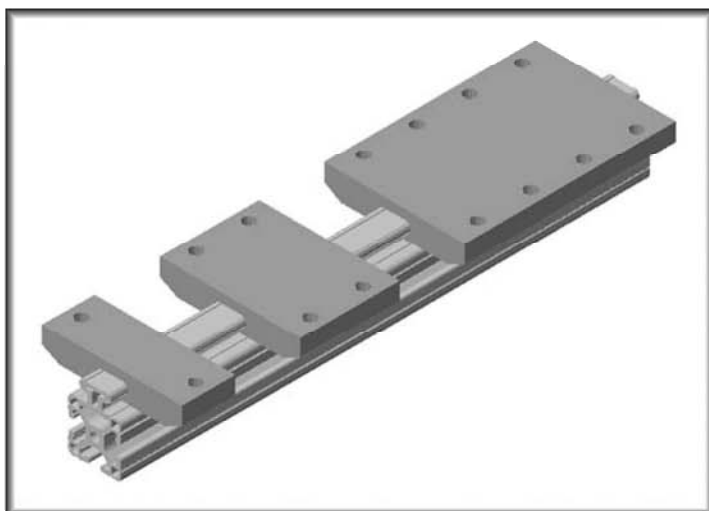
15LG1515L T-SLOTTED EXTRUSION	
MATERIAL	6063-T6
FINISH	CLEAR ANODIZE
	204R1 / .0004dp
SURFACE HARDNESS	250HV
WEIGHT PER FOOT	1.404 LBS
STOCK LENGTHS	97" +/- .125
	145" +/- .125
	242" +/- .125
MOMENT OF INERTIA	IX = .2070" ⁴
	IY = .4190" ⁴
ESTIMATED AREA	1.194 Sq. In.

See page 203 for
linear guide bearings

See page 30 for
technical data

ADVANTAGES:

- *Low Coefficient of Friction*
- *Maintenance Free*
- *Corrosion Resistant*
- *Lightweight, but Strong*
- *High Load Rating*
- *Wipes Away Contaminants*
- *Utilize Other 3 T-Slots*
- *Modular*
- *Add Pneumatics / Hydraulics*
- *FAST Assembly*
- *Easy To Fabricate*
- *Aestetically Clean*



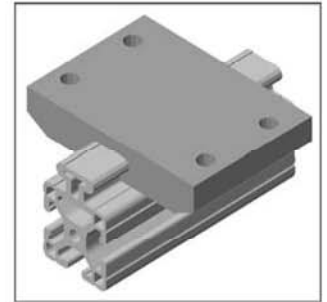
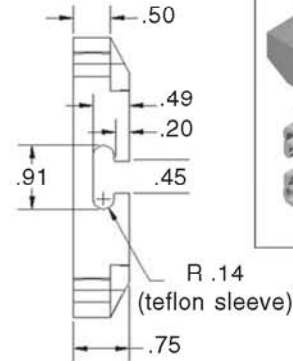
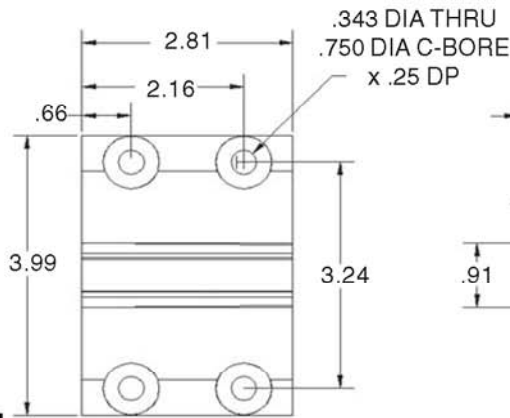
Applications for 15LG1515L:

- *Pick & Place Units*
- *Washdown Applications*
- *Digital Length Systems*
- *Sorting Machines*
- *Sliding Doors*

15LM8570

15 SERIES
3" LINEAR GUIDE BEARING

FOR FAST ASSEMBLY
USE 15FA3502



Part Wt: .31 lbs

RECOMMENDED HARDWARE

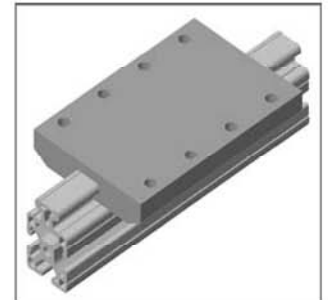
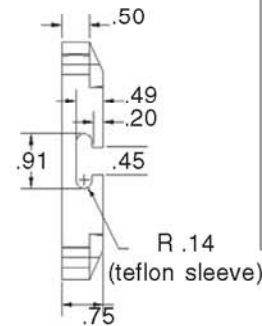
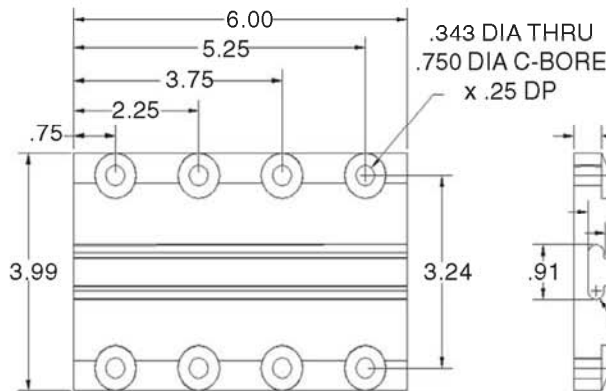
QTY	DESCRIPTION	PART #
2	5/16-18 x 1 SHCS	13FA3335
2	5/16 FLAT WASHER	13FA3700
2	5/16-18 ECONOMY T-NUT	15FA3501

For additional fasteners and t-nuts, see pages 130-135

15LM8572

15 SERIES
6" LINEAR GUIDE BEARING

FOR FAST ASSEMBLY
USE 15FA3502



Part Wt: .31 lbs

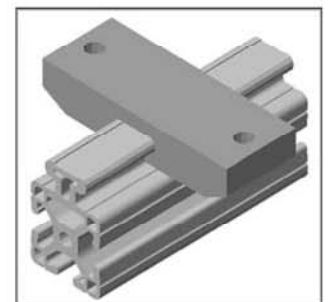
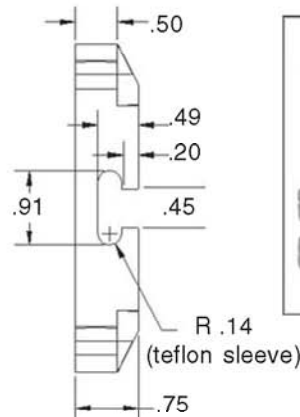
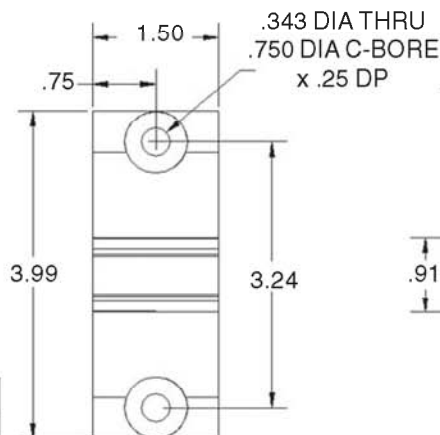
RECOMMENDED HARDWARE

QTY	DESCRIPTION	PART #
2	5/16-18 x 1 SHCS	13FA3335
2	5/16 FLAT WASHER	13FA3700
2	5/16-18 ECONOMY T-NUT	15FA3501

For additional fasteners and t-nuts, see pages 130-135

15LM8574

15 SERIES
1.5" LINEAR GUIDE BEARING



Part Wt: .31 lbs

RECOMMENDED HARDWARE

QTY	DESCRIPTION	PART #
2	5/16-18 x 1 SHCS	13FA3335
2	5/16 FLAT WASHER	13FA3700
2	5/16-18 ECONOMY T-NUT	15FA3501

For additional fasteners and t-nuts, see pages 130-135

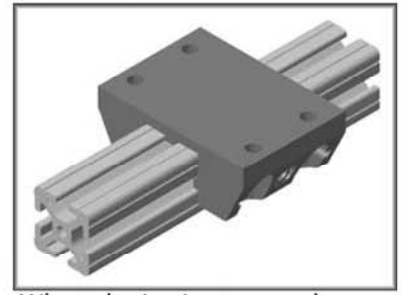
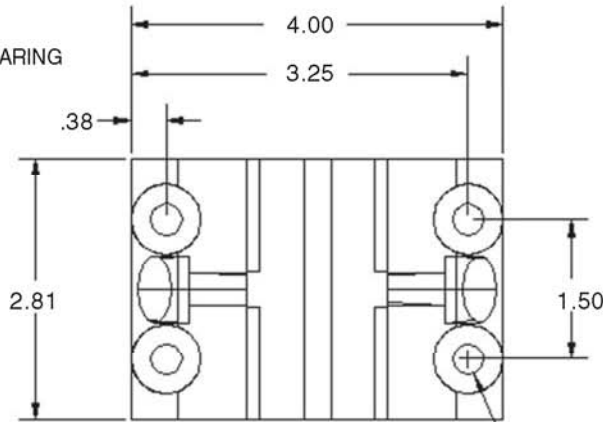
Linear Motion

15LM8560

15 SERIES
DOUBLE FLANGE LINEAR BEARING



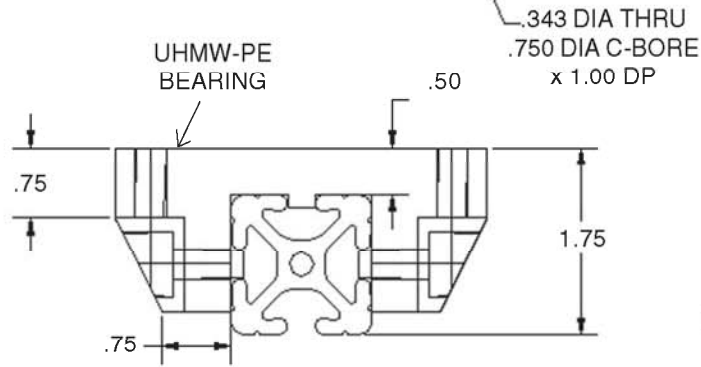
FOR USE WITH
1.5" x 1.5" EXTRUSION



When designing, never hang a load from the linear bearings!

Keyed to adapt to our
T-Slotted Aluminum Extrusions!

UHMW is an FDA
Approved Material!



Advantages

- Solid One Piece Construction
- Eliminated Thread Pull-out
- Strong
- Clean Look!

Ideal Applications

- Adjustable Machine Stops
- Drawer Slides
- Horizontal Part Shuttles
- Horizontal Fixturing Applications
- Clean Room Applications

RECOMMENDED HARDWARE

QTY	DESCRIPTION	PART #
4	5/16-18 x 1.25 SHCS	13FA3328
4	5/16 FLAT WASHER	13FA3700
4	5/16-18 ECONOMY T-NUT	15FA3501

For additional fasteners and t-nuts, see pages 130-135

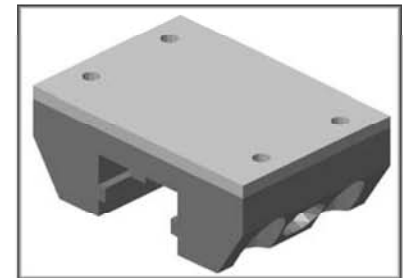
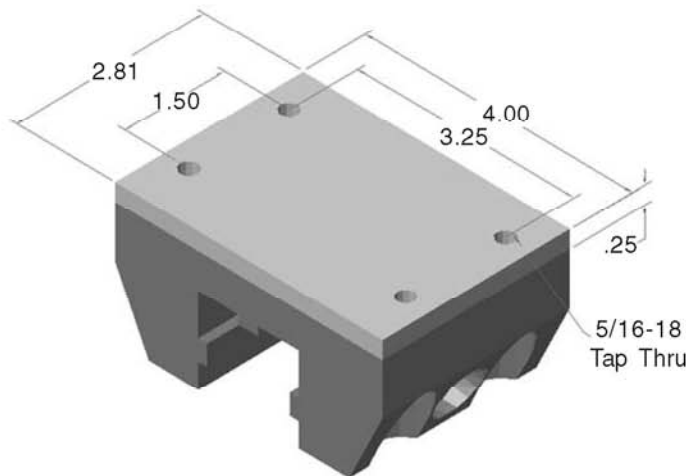
UHMW-PE (Ultra High Molecular Weight Polyethylene) is a self-lubricating material with a very low coefficient of friction.

15LM8561

15 SERIES
DOUBLE FLANGE LINEAR BEARING



Create your own custom
bolt pattern!



Advantages

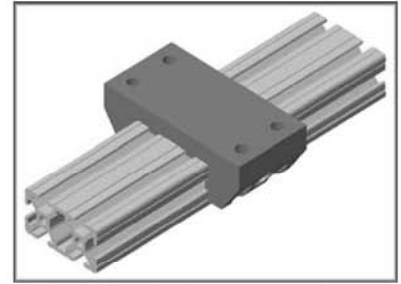
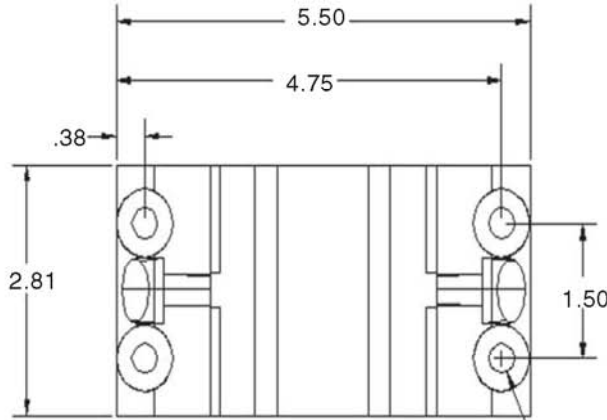
- Bolts Directly to Bearing
- Eliminated Plastic Thread Pull-out
- Added Strength
- Clean Look!
- Strong

15LM8562

15 SERIES
DOUBLE FLANGE LINEAR BEAF

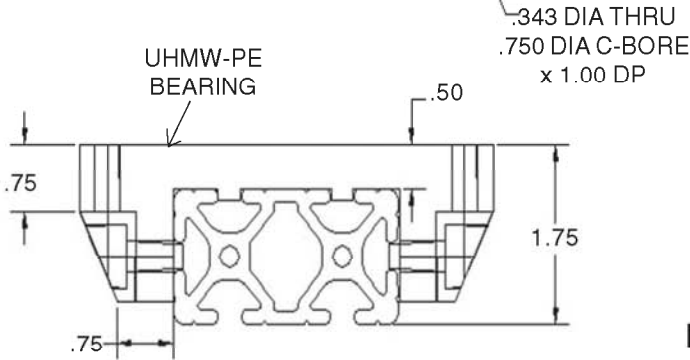


FOR USE WITH
1.5" x 3.0" EXTRUSION



When designing, never hang a load from the linear bearings!

Keyed to adapt to our
T-Slotted Aluminum Extrusions!



UHMW is an FDA
Approved Material!

Advantages

- Solid One Piece Construction
- Eliminated Thread Pull-out
- Strong
- Clean Look!

Ideal Applications

- Adjustable Machine Stops
- Drawer Slides
- Horizontal Part Shuttles
- Horizontal Fixturing Applications
- Clean Room

RECOMMENDED HARDWARE

QTY	DESCRIPTION	PART #
4	5/16-18 x 1.25 SHCS	13FA3328
4	5/16 FLAT WASHER	13FA3700
4	5/16-18 ECONOMY T-NUT	15FA3501

For additional fasteners and t-nuts, see pages 130-135

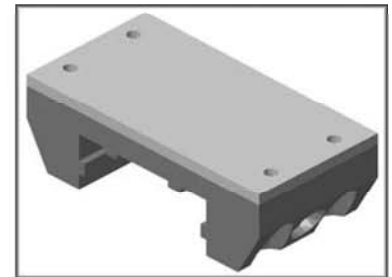
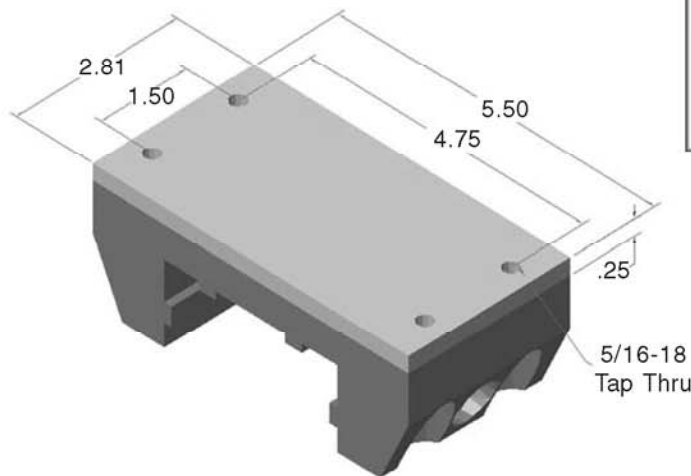
UHMW-PE (Ultra High Molecular Weight Polyethylene) is a self-lubricating material with a very low coefficient of friction.

15LM8563

15 SERIES
DOUBLE FLANGE LINEAR BEARING



Create your own custom
bolt pattern!



Linear Motion

Advantages

- Bolts Directly to Bearing
- Eliminated Plastic Thread Pull-out
- Added Strength
- Clean Look!
- Strong

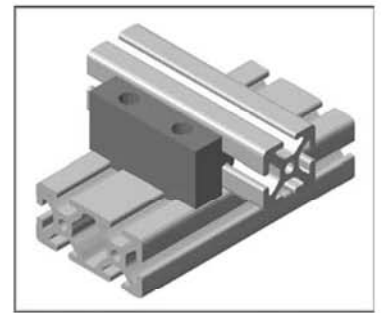
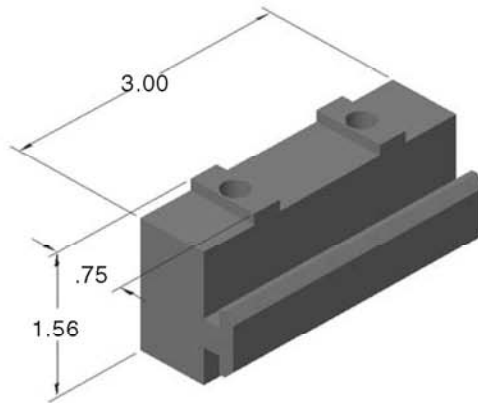
15LM8730
15 SERIES
KEYED SLIDE BLOCK

15LM8732
15 SERIES
KEYED SLIDE BLOCK W/ BRAKE KIT



Advantages

- Bolts Directly to Extrusion
- Create your own length
- Strong
- Clean Look!



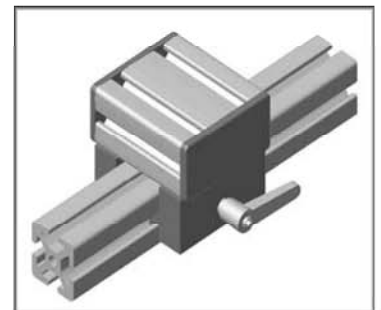
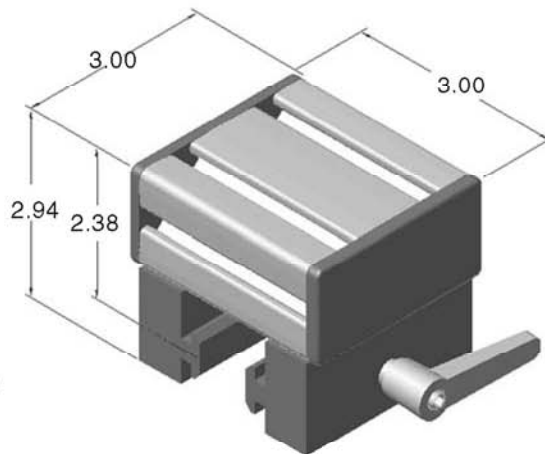
15LM8708
15 SERIES
1.5" LINEAR SLIDE

15LM8702
15 SERIES
1.5" LINEAR SLIDE W/ BRAKE KIT



Advantages

- Bolts Directly to Extrusion
- Create your own length
- Strong
- Clean Look!



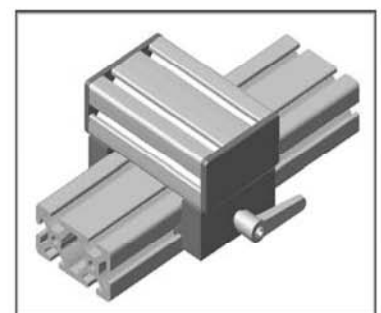
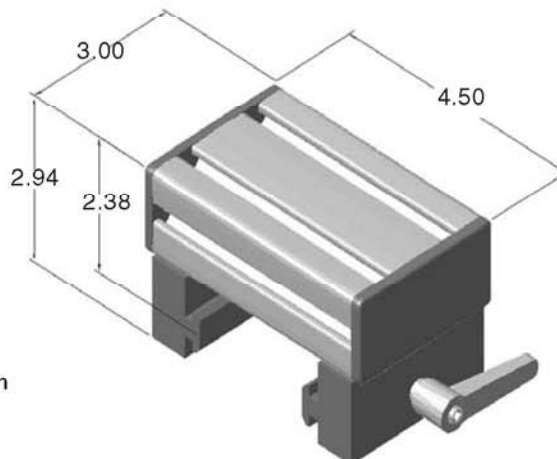
15LM8720
15 SERIES
3" LINEAR SLIDE

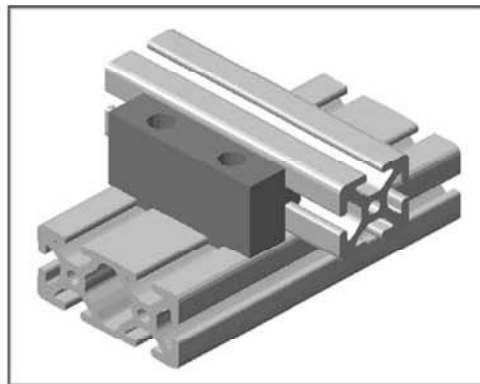
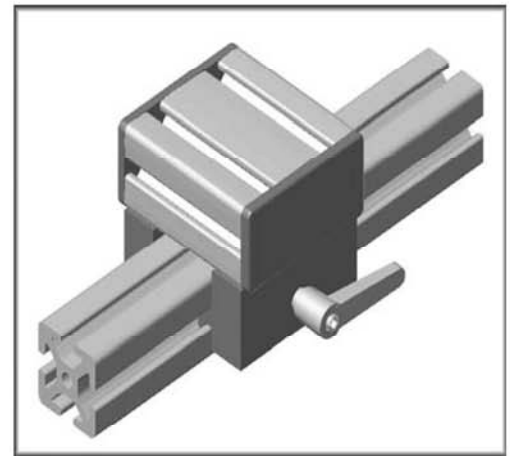
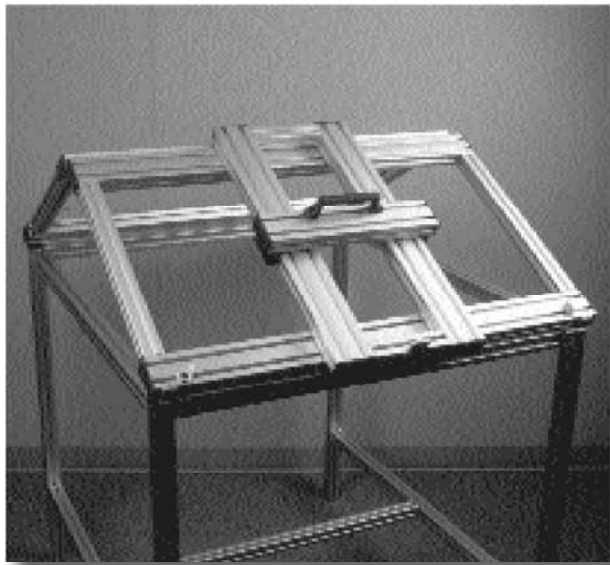
15LM8714
15 SERIES
3" LINEAR SLIDE W/ BRAKE KIT



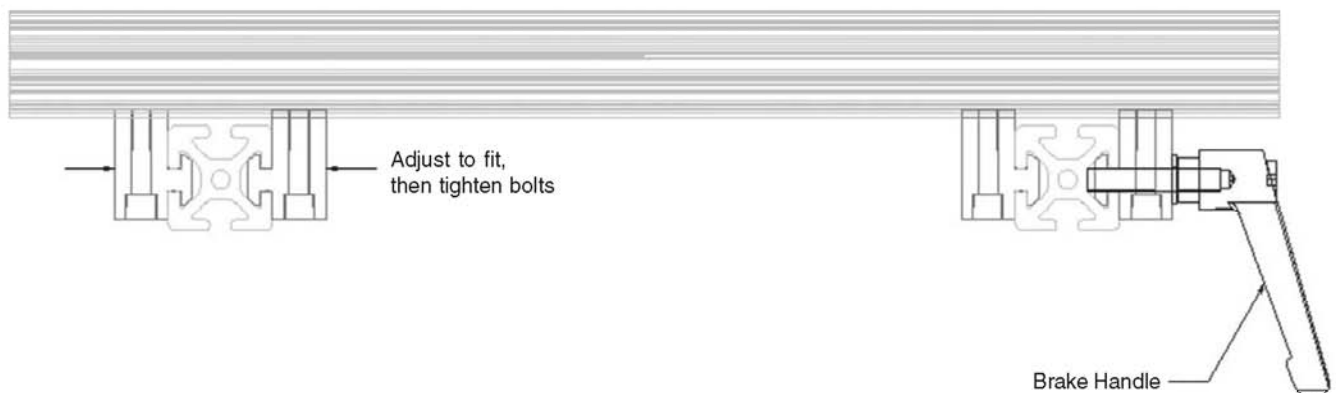
Advantages

- Bolts Directly to Extrusion
- Create your own length
- Strong
- Clean Look!





Linear slides fit all 15 series extrusion profiles. Special keyed profile provides (6) surfaces that dissipate frictional forces and provide a tighter fit without the use of shims or spacers. The keyway mounts have 1.5" centers that make these blocks with all 15 series extrusion profiles and allows users to build custom slides to any size.



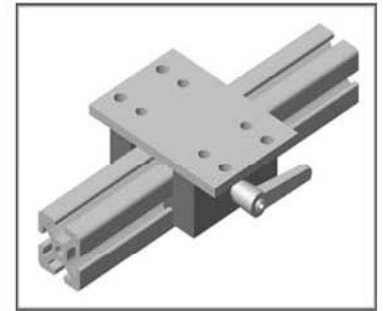
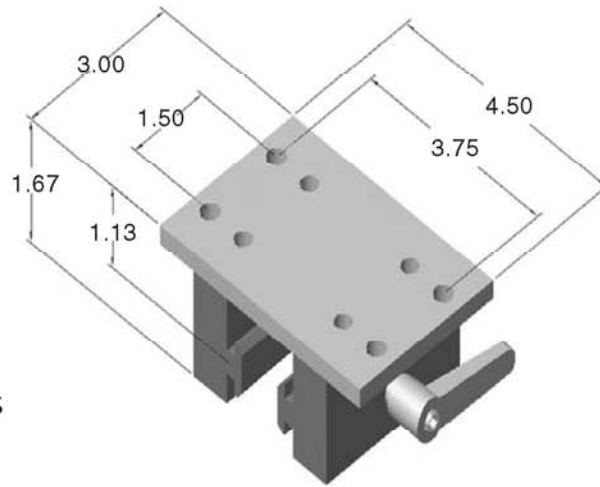
Linear Motion

15LM8710
15 SERIES
1.5" LINEAR BEARING



15LM8704
15 SERIES
1.5" LINEAR BEARING W/ BRAKE

15LM8726
15 SERIES
3" LINEAR BEARING BLOCK



Ideal Applications

- Adjustable Machine Stops
- Drawer Slides
- Horizontal Part Shuttles
- Horizontal Fixturing Applications

FOR USE WITH
1.5" x 1.5" EXTRUSIONS

RECOMMENDED HARDWARE

QTY	DESCRIPTION	PART #
4	5/16-18 x 5/8 SHCS	13FA3325
4	5/16-18 ECONOMY T-NUT	15FA3501

For additional fasteners and t-nuts, see pages 130-135

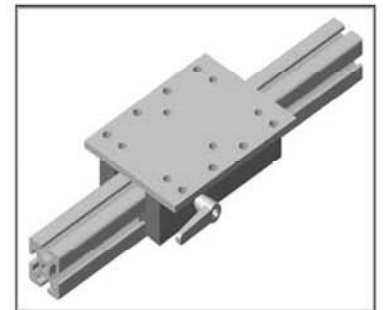
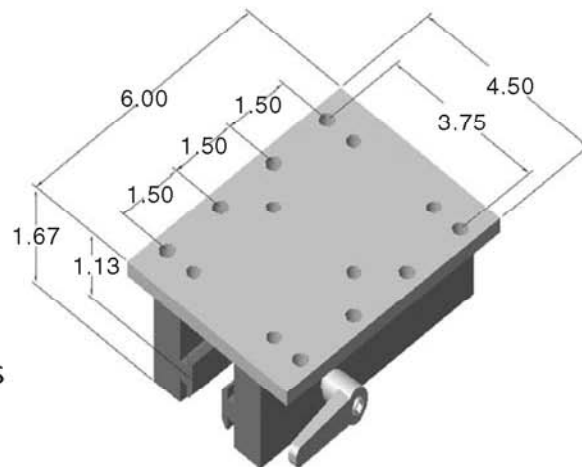
Low Friction Thermoplastic

15LM8712
15 SERIES
1.5" LINEAR BEARING



15LM8706
15 SERIES
1.5" LINEAR BEARING W/ BRAKE

15LM8725
15 SERIES
6" LINEAR BEARING BLOCK



Ideal Applications

- Adjustable Machine Stops
- Drawer Slides
- Horizontal Part Shuttles
- Horizontal Fixturing Applications

FOR USE WITH
1.5" x 1.5" EXTRUSION

RECOMMENDED HARDWARE

QTY	DESCRIPTION	PART #
8	5/16-18 x 5/8 SHCS	13FA3325
8	5/16-18 ECONOMY T-NUT	15FA3501

For additional fasteners and t-nuts, see pages 130-135

Low Friction Thermoplastic

15LM8722

15 SERIES
3.0" LINEAR BEARING

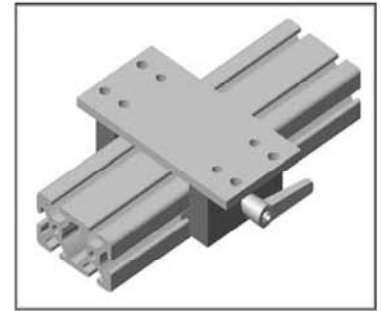
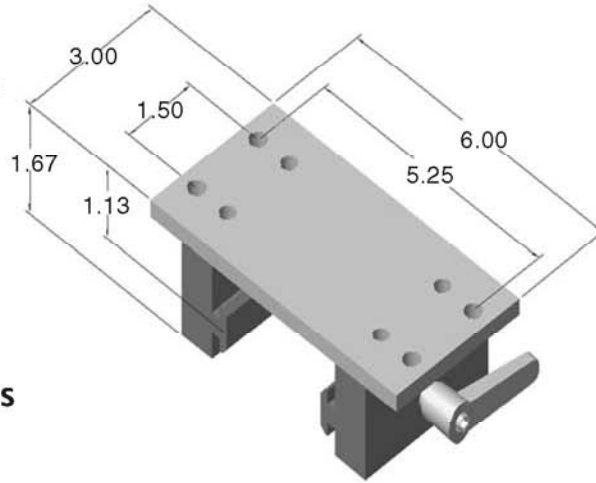


15LM8716

15 SERIES
3.0" LINEAR BEARING W/ BRAKE

15LM8727

15 SERIES
3" LINEAR BEARING BLOCK



Ideal Applications

- Adjustable Machine Stops
- Drawer Slides
- Horizontal Part Shuttles
- Horizontal Fixturing Applications

FOR USE WITH
1.5" x 3.0" EXTRUSIONS
3.0" x 3.0" EXTRUSIONS

RECOMMENDED HARDWARE

QTY	DESCRIPTION	PART #
4	5/16-18 x 5/8 SHCS	13FA3325
4	5/16-18 ECONOMY T-NUT	15FA3501

For additional fasteners and t-nuts, see pages 130-135

Low Friction Thermoplastic

15LM8724

15 SERIES
3.0" LINEAR BEARING

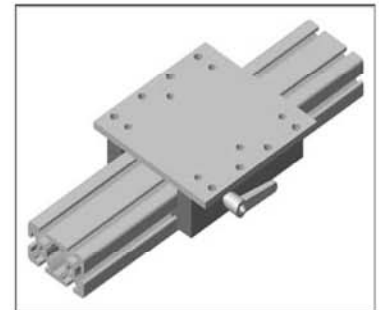
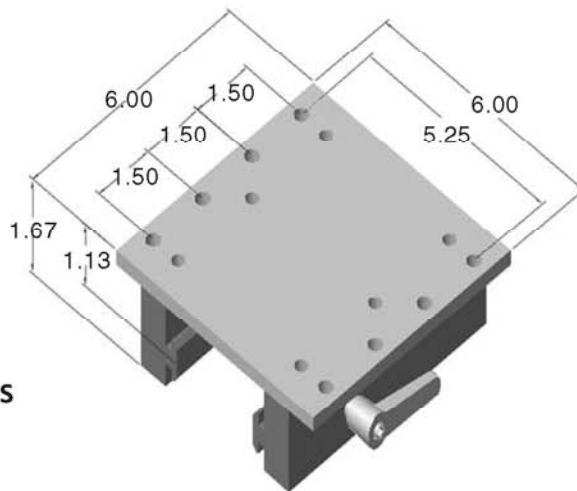


15LM8718

15 SERIES
3.0" LINEAR BEARING W/ BRAKE

15LM8728

15 SERIES
6" LINEAR BEARING BLOCK



Ideal Applications

- Adjustable Machine Stops
- Drawer Slides
- Horizontal Part Shuttles
- Horizontal Fixturing Applications

FOR USE WITH
1.5" x 3.0" EXTRUSIONS
3.0" x 3.0" EXTRUSIONS

RECOMMENDED HARDWARE

QTY	DESCRIPTION	PART #
8	5/16-18 x 5/8 SHCS	13FA3325
8	5/16-18 ECONOMY T-NUT	15FA3501

For additional fasteners and t-nuts, see pages 130-135

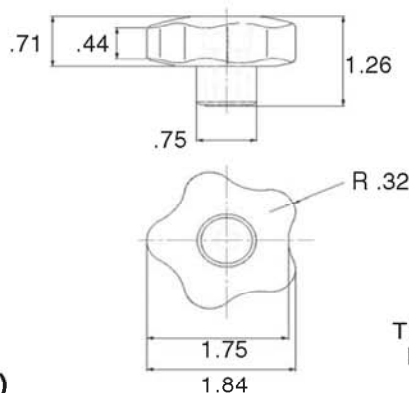
Low Friction Thermoplastic

Linear Motion

15LM8516
STAR HANDLE BRAKE KIT

ERGOSTYLE®
Ergonomic Brake Handle!

Hardware Included!
(5/16-18 x 1-1/4 Carriage Bolt)



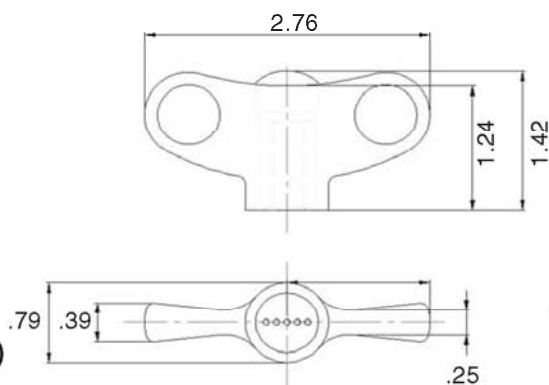
Tip on assembling
linear brake kits
on page 343



15LM8518
"T" HANDLE BRAKE KIT

ERGOSTYLE®
Ergonomic Brake Handle!

Hardware Included!
(5/16-18 x 1-1/4 Carriage Bolt)



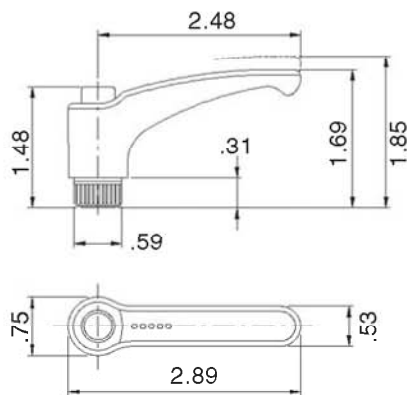
Tip on assembling
linear brake kits
on page 343



15LM8520
RATCHETING "L" HANDLE BRAKE KIT

ERGOSTYLE®
Ergonomic Brake Handle!

Hardware Included!
(5/16-18 x 1-1/4 Carriage Bolt)



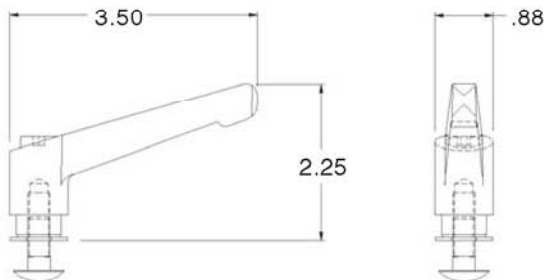
Tip on assembling
linear brake kits
on page 343
"L" handle is recommended
for proper torque



15LM8540
RATCHETING "L" HANDLE BRAKE KIT
(ZINC HANDLE W/ STAINLESS HARDWARE)

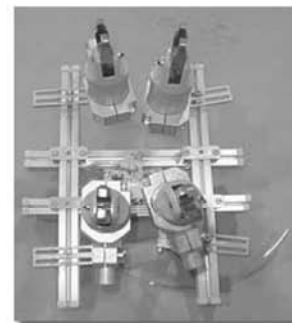
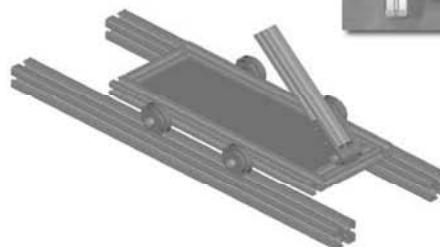
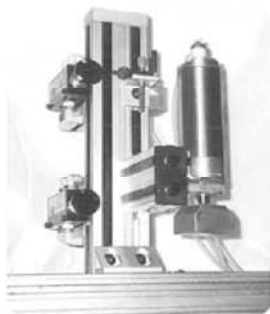
Tip on assembling
linear brake kits
on page 215

Stainless Steel
Hardware Included!
(5/16-18 x 1 Carriage
Bolt & 5/16" Washer)



Brake capacity for "L" handle
is approximately 150 lbs
for 15 series



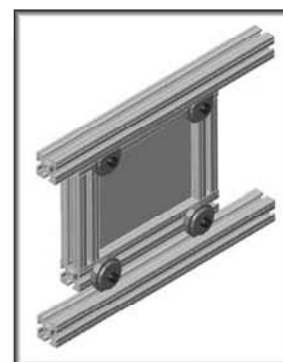
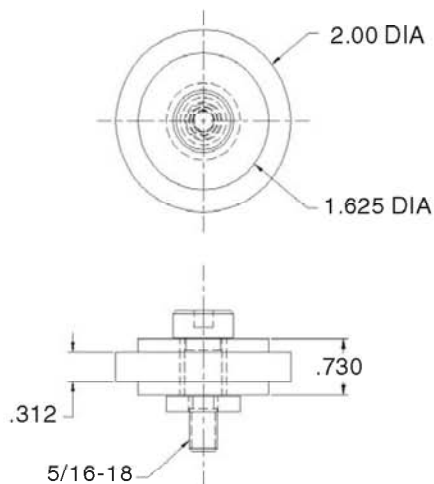


15LM8506

15 SERIES
ROLLER WHEEL

HARDWARE INCLUDED!

- Self lubricating bronze bushing
- Made of high strength black nylatron



IDEAL APPLICATIONS

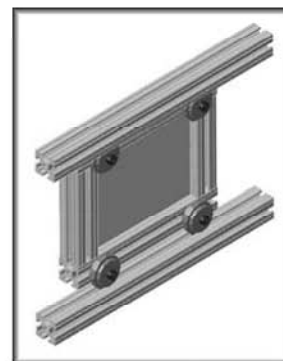
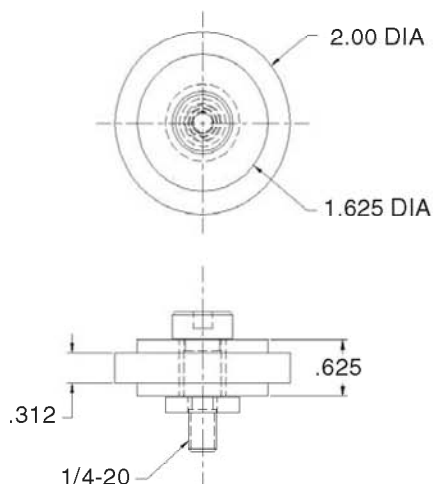
- Sliding Doors
- Moveable Gates

15LM8507

15 SERIES
ROLLER WHEEL

HARDWARE INCLUDED!

- Steel ball bearings
- Made of high strength black nylatron



IDEAL APPLICATIONS

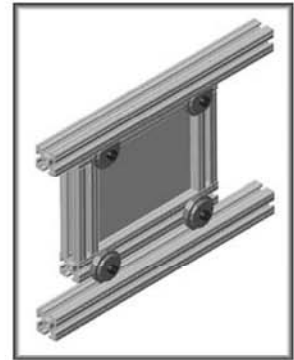
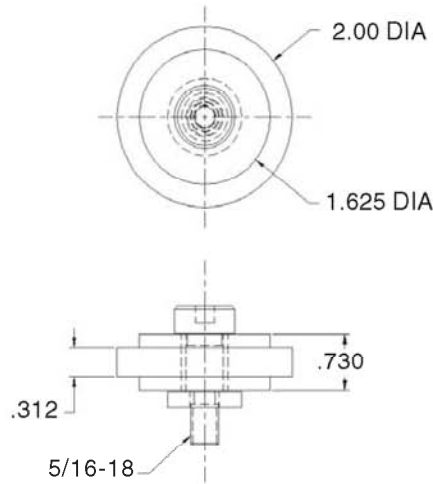
- Sliding Doors
- Moveable Gates

Linear Motion

15LM8532
15 SERIES
DELUXE ROLLER WHEEL

HARDWARE INCLUDED!

- (2) Shielded Roller Bearings
- Made of high strength black nylatron



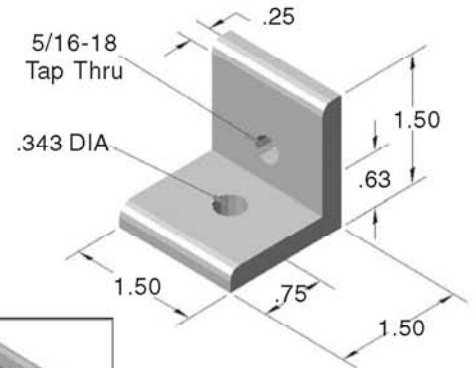
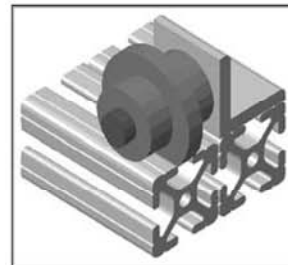
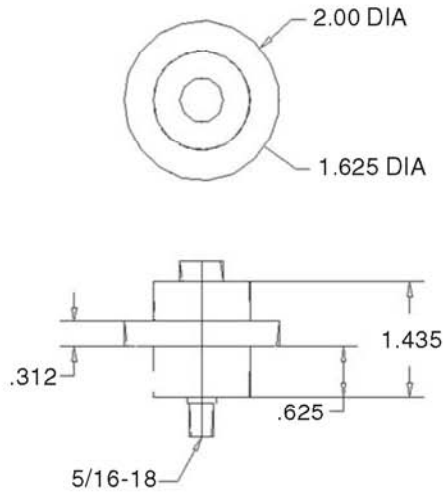
IDEAL APPLICATIONS

- Sliding Doors
- Moveable Gates

15LM8590
15 SERIES
ROLLER WHEEL



HARDWARE INCLUDED!



IDEAL APPLICATIONS

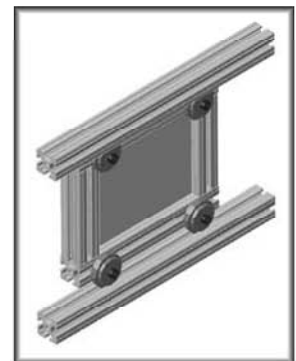
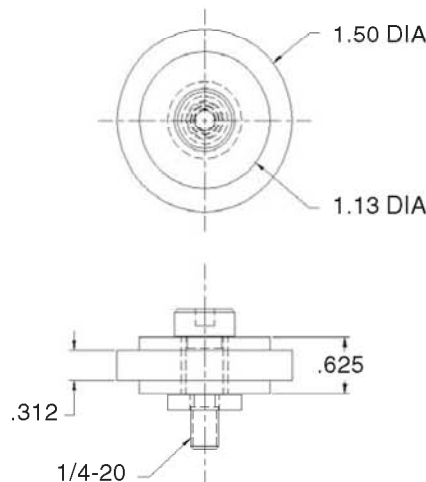
- Sliding Doors
- Moveable Gates

15LM8535
15 SERIES
ROLLER WHEEL



HARDWARE INCLUDED!

- Steel ball bearing
- Made of high strength black nylatron



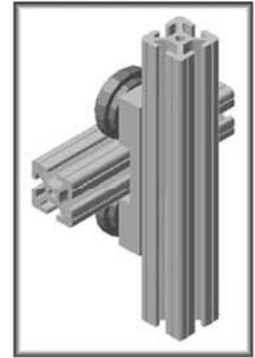
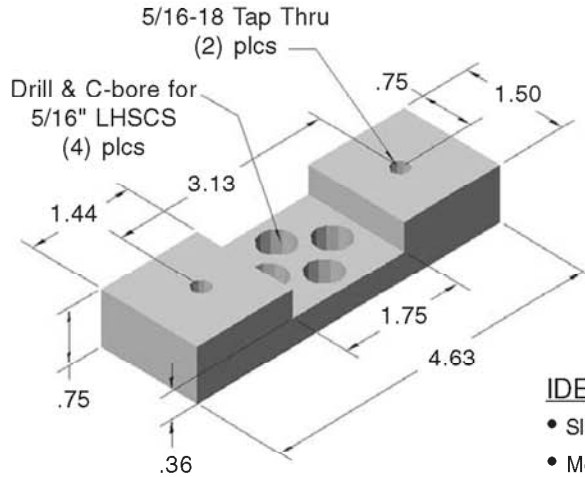
IDEAL APPLICATIONS

- Sliding Doors
- Moveable Gates

15LM8530

15 SERIES
1.5" ROLLER WHEEL BRACKET

HARDWARE INCLUDED!



IDEAL APPLICATIONS

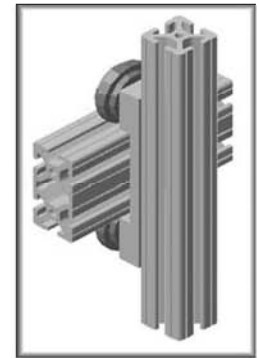
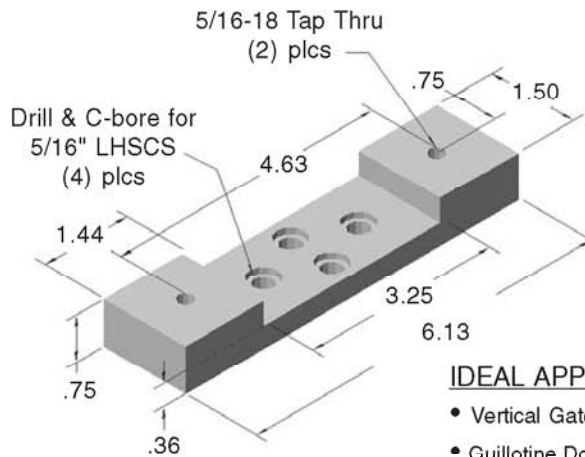
- Sliding Doors
- Moveable Gates

• See page 214 for roller wheel bracket assemblies

15LM8536

15 SERIES
3.0" ROLLER WHEEL BRACKET

HARDWARE INCLUDED!



IDEAL APPLICATIONS

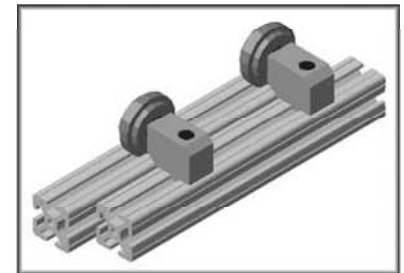
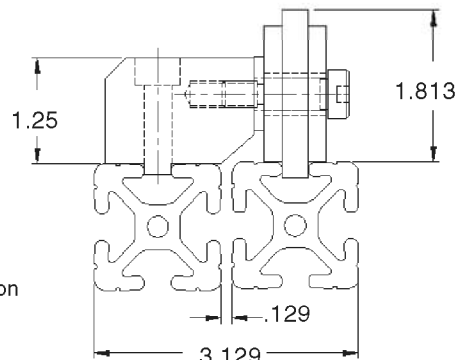
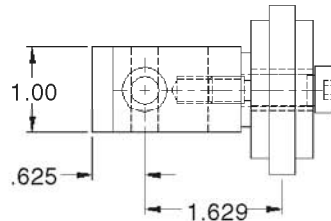
- Vertical Gates
- Guillotine Doors

• See page 214 for roller wheel bracket assemblies

15LM8504

15 SERIES
UNI-ROLLER WHEEL BRACKET

HARDWARE INCLUDED!



Linear Motion

IDEAL APPLICATIONS












- Sliding Doors
- Moveable Gates
- Machine Stops

- Self lubricating bronze bushing
- Wheel made of high strength black nylatron
- Block made of aluminum

Roller Wheel Assemblies

Components

A
s
s
e
m
b
l
i
e
s

	 15LM 8530	 15LM 8536	 15LM 8514	 15LM 8506	 15LM 8532
 15LM 8504			1	1	
 15LM 8542			1		1
 15LM 8543	1			2	
 15LM 8544	1				2
 15LM 8545		1		2	
 15LM 8546		1			2

HARDWARE INCLUDED!

