

SECTION 7

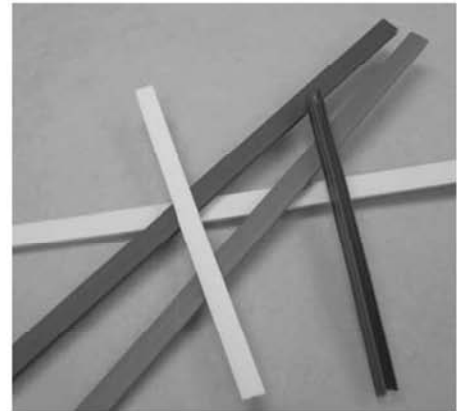
15 SERIES

ACCESSORIES

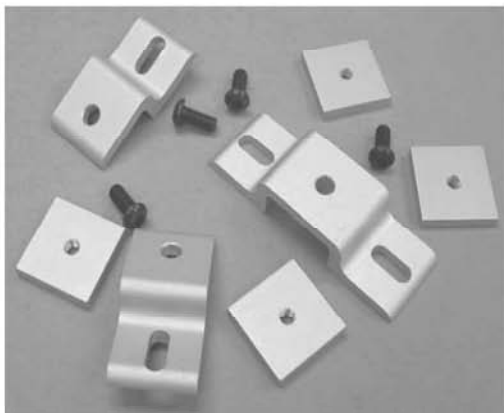
ENDCAPS



**T-SLOT COVER,
PANEL GASKET**



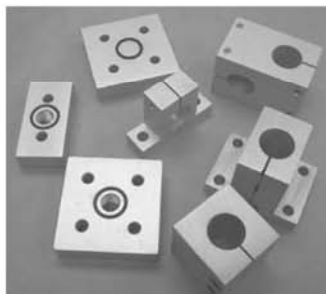
**MESH / PANEL
RETAINERS**



**LATCHING
MECHANISMS**

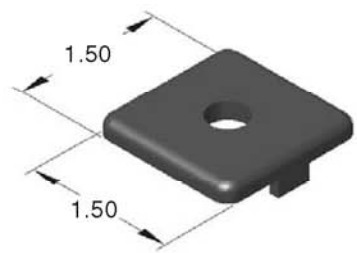


PRESSURE MANIFOLDS / STANCHIONS



15AC7925

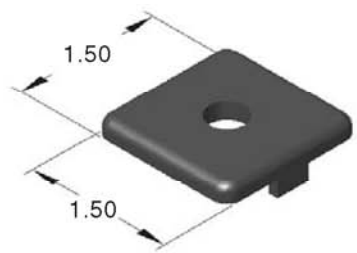
1.5" x 1.5" ENDCAP FOR EX & QE PROFILES



USE (1) 15EX1530 ENDCAP & (1) 15EX1515 ENDCAP FOR 15EX1545L

15AC7825

1.5" x 1.5" HEAVY DUTY ENDCAP FOR EX & QE PROFILES



- 13FA3322 - 5/16-18 x 5/8 BHSCS INCLUDED
- TAPPING SERVICE ON PAGE 161

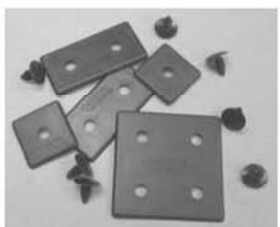
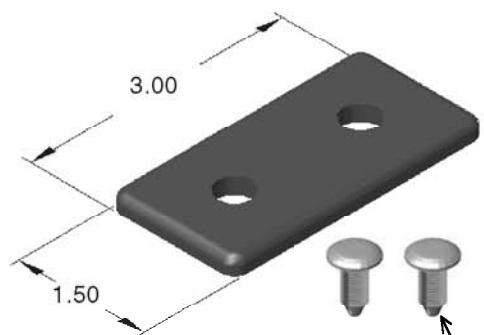
- PUSH IN FASTENERS **INCLUDED**
- MADE OF POLYPROPYLENE

15AC7934

15 SERIES PUSH IN FASTENER (Replacements)

15AC7930

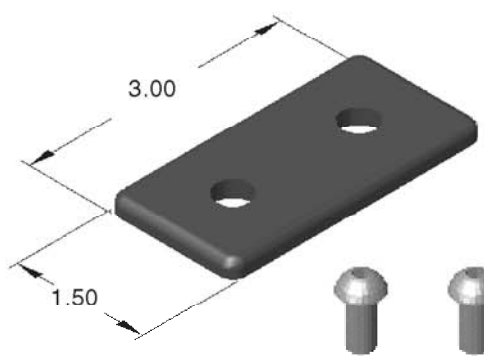
1.5" x 3.0" ENDCAP FOR EX & QE PROFILES



USE (1) 15EX1530 ENDCAP & (1) 15EX1515 ENDCAP FOR 15EX1545L

15AC7830

1.5" x 3.0" HEAVY DUTY ENDCAP FOR EX & QE PROFILES



- 13FA3322 - 5/16-18 x 5/8 BHSCS INCLUDED
- TAPPING SERVICE ON PAGE 161

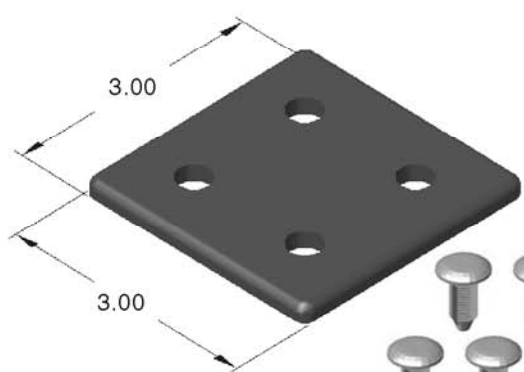
- PUSH IN FASTENERS **INCLUDED**
- MADE OF POLYPROPYLENE

15AC7934

15 SERIES PUSH IN FASTENER (Replacements)

15AC7932

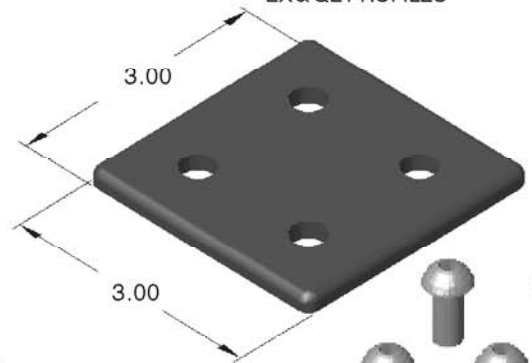
3.0" x 3.0" ENDCAP FOR EX & QE PROFILES



DOUBLE UP FOR CAPPING 15EX3060

15AC7832

3.0" x 3.0" HEAVY DUTY ENDCAP FOR EX & QE PROFILES



- 13FA3322 - 5/16-18 x 5/8 BHSCS INCLUDED
- TAPPING SERVICE ON PAGE 161

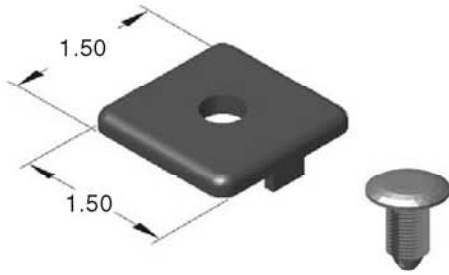
- PUSH IN FASTENERS **INCLUDED**
- MADE OF POLYPROPYLENE

15AC7934

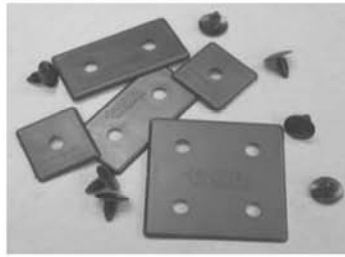
15 SERIES PUSH IN FASTENER (Replacements)

15AC7940

15SM1515, L, UL END CAP



- PUSH IN FASTENERS INCLUDED
- MADE OF POLYPROPYLENE

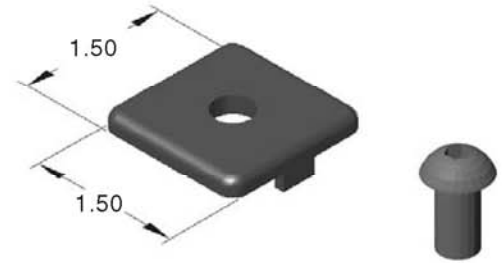


15AC7946

15 SERIES
PUSH IN FASTENER
(Replacements)

15AC7840

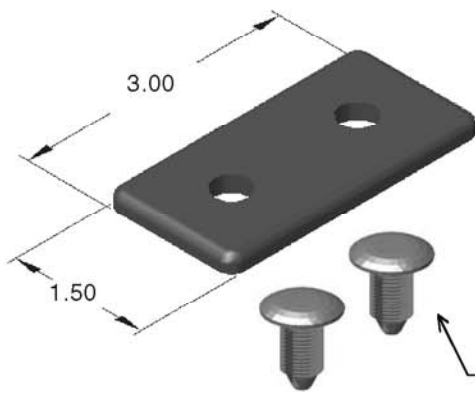
15SM1515, L, UL HEAVY DUTY END CAP



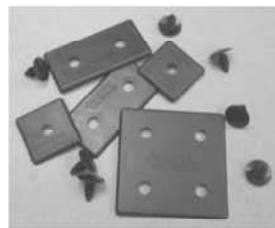
- 13FA3322 - 5/16-18 x 5/8 BHSCS INCLUDED
- TAPPING SERVICE ON PAGE 161

15AC7942

15SM1530, L END CAP



- PUSH IN FASTENERS INCLUDED
- MADE OF POLYPROPYLENE



USE (1) 15EX1530 ENDCAP &
(1) 15EX1515 ENDCAP FOR
15EX1545L

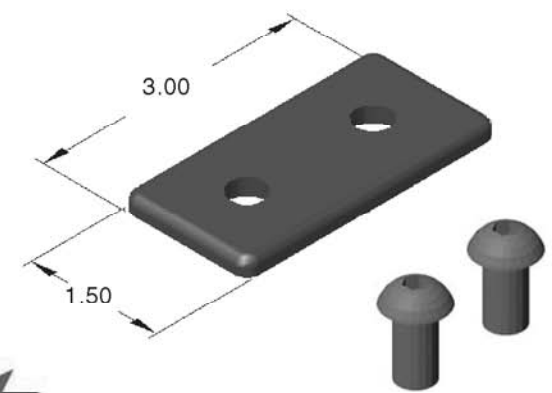
15AC7946

15 SERIES
PUSH IN FASTENER
(Replacements)



15AC7842

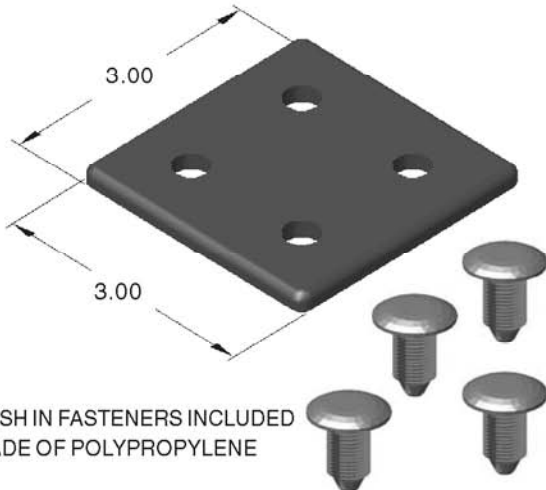
15SM1530, L HEAVY DUTY END CAP



- 13FA3322 - 5/16-18 x 5/8 BHSCS INCLUDED
- TAPPING SERVICE ON PAGE 161

15AC7944

15SM3030 END CAP



- PUSH IN FASTENERS INCLUDED
- MADE OF POLYPROPYLENE

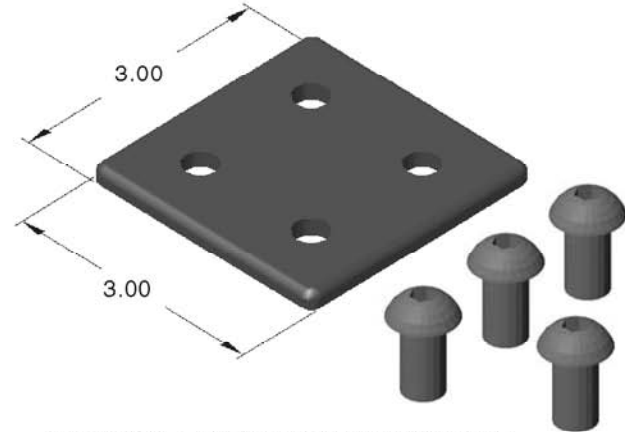


15AC7946

15 SERIES
PUSH IN FASTENER
(Replacements)

15AC7844

15SM3030 HEAVY DUTY END CAP

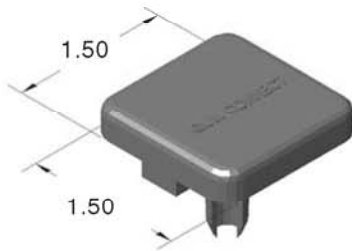


- 13FA3322 - 5/16-18 x 5/8 BHSCS INCLUDED
- TAPPING SERVICE ON PAGE 161

15 SERIES ENDCAPS

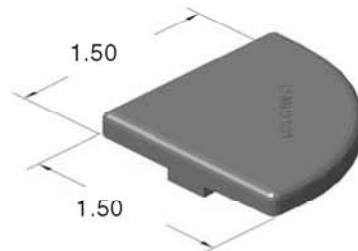
15AC7915

1.5" x 1.5" ENDCAP



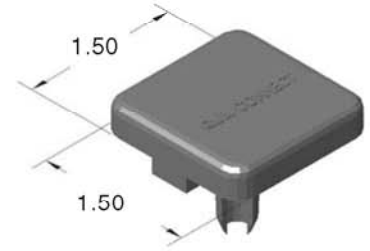
15AC7919

1.5" QUARTER ROUND ENDCAP



15AC7909

1.75" x 1.75" ENDCAP

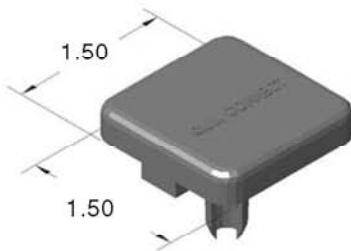


- NO HARDWARE REQUIRED
- MADE OF POLYPROPYLENE



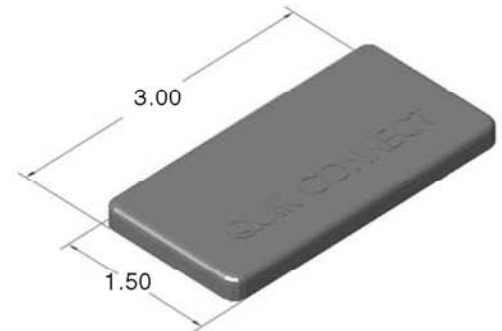
15AC7923

2.375" x 2.375" ENDCAP



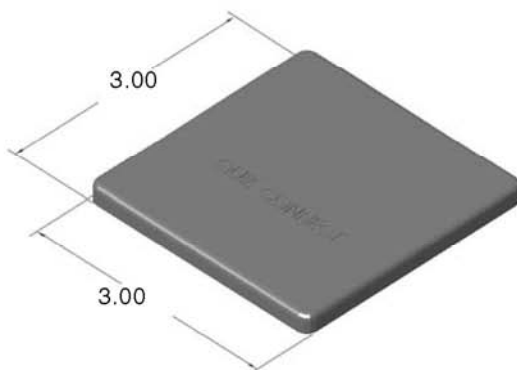
15AC7917

1.5" x 3.0" ENDCAP



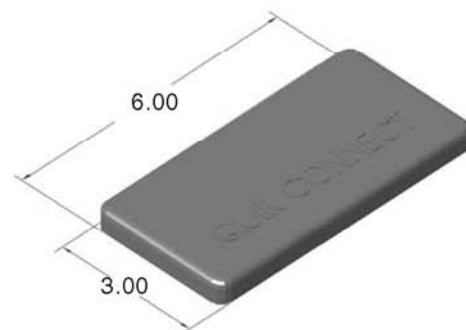
15AC7913

3.0" x 3.0" ENDCAP



15AC7911

3.0" x 6.0" ENDCAP



15 SERIES T-SLOT COVER

15AC8750 - STOCK LENGTH = 96.0"
(YELLOW)

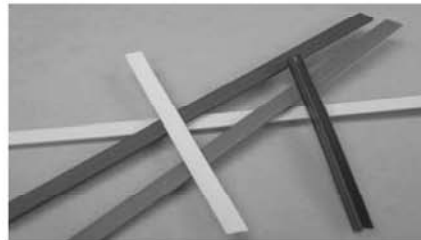
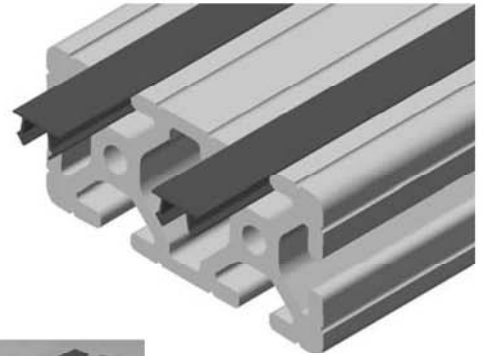
15AC8751 - STOCK LENGTH = 96.0"
(BLACK)

15AC8752 - STOCK LENGTH = 96.0"
(BLUE)

15AC8753 - STOCK LENGTH = 96.0"
(GRAY)

15AC8790 - STOCK LENGTH = 96.0"
(YELLOW)

15AC8791 - STOCK LENGTH = 96.0"
(BLACK)

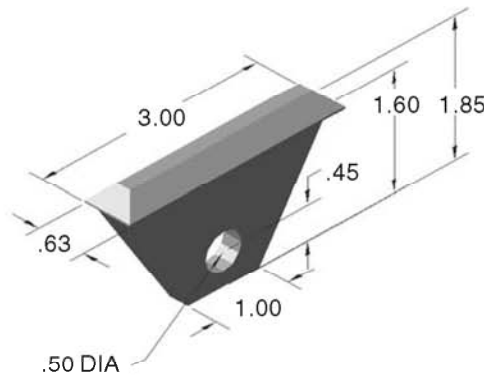


- PRESSES EASILY INTO SLOT
- A GREAT FINISH TO A PROJECT
- KEEPS T-SLOTS CLEAN

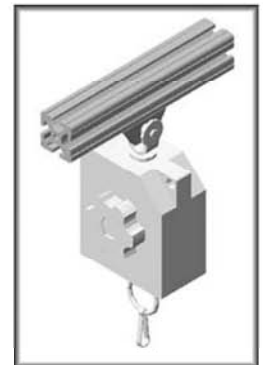
T-Slot cover can be cut with a sharp utility knife, diagonal cutters, pruning shears, etc...

15AC8760

15 SERIES
TOOL HANGER



- GREAT FOR AIR TOOLS OR CABLE REELS
- HIGH STRENGTH BLACK NYLON
- 75 LB CAPACITY
- NO FASTENERS REQUIRED



Accessories

15AC8758

15 SERIES
TOOL HANGER CLIP



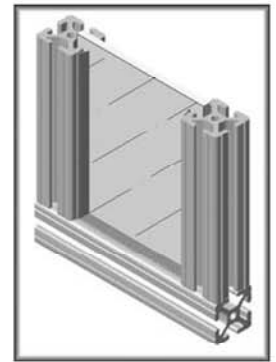
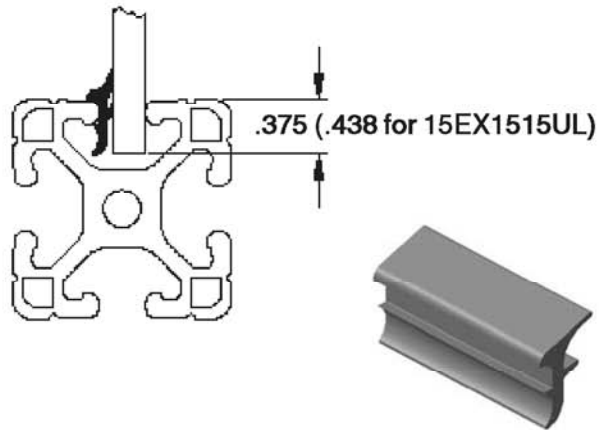
- COMPLETES THE PACKAGE
- NO TOOLS REQUIRED
- STRONG

15 SERIES RUBBER PANEL GASKET

15AC8770
(PER FOOT)

15AC8771
(250 FOOT ROLL)

- HOLDS PANELS TIGHT
- RATTLE PROOF
- INSERTS AFTER PANEL IS INSTALLED
- BLACK SILICONE RUBBER

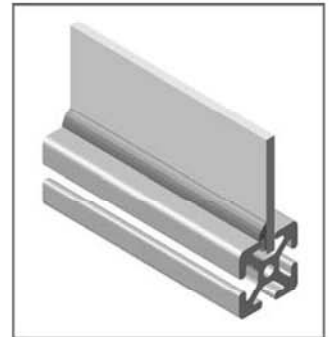
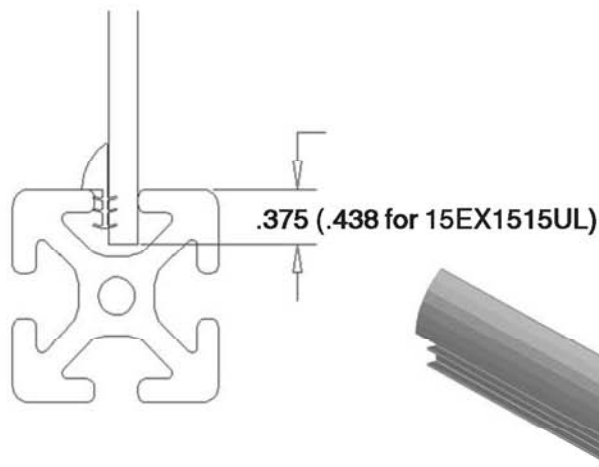


15 SERIES RUBBER PANEL GASKET

15AC8772
(PER FOOT)



- HOLDS PANELS TIGHT
- RATTLE PROOF
- INSERTS AFTER PANEL IS INSTALLED
- GRAY SILICONE RUBBER



15AC7310

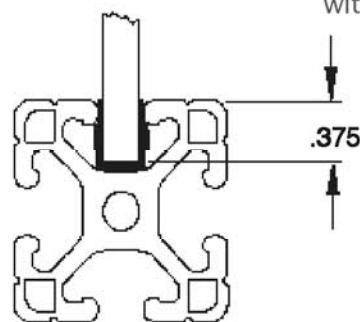
15 SERIES
"U" SHAPED PANEL GASKET
STOCK LENGTH = 96.0"

- HOLDS PANELS TIGHT
- RATTLE PROOF
- INSERTS INTO EXTRUSION T-SLOT
- BLACK POLYETHYLENE

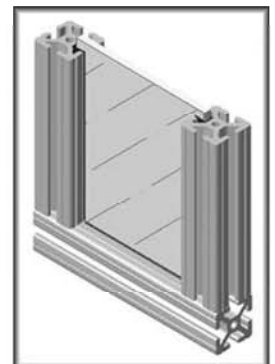


15 SERIES PLASTIC PANEL GASKET

Not recommended for use
with 15EX1515UL!



Edge radius on panel is recommended
for easy installation.
Edge radius service on pages 169 & 329

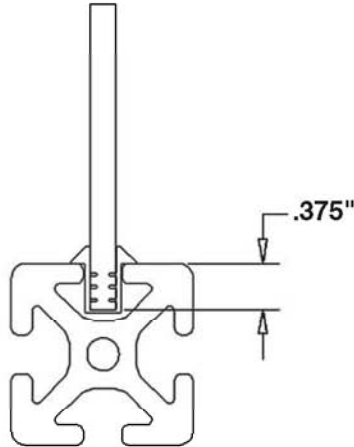


15 SERIES EXTRUSION GRIP PANEL GASKET

15AC8774
(PER FOOT)



- HOLDS PANELS TIGHT
- RATTLE PROOF
- INSERTS BEFORE PANEL IS INSTALLED
- GRAY SILICONE RUBBER



15 SERIES FOAM RUBBER DOOR SEAL

SOLD BY THE FOOT

15AC8784

15 SERIES
FOAM RUBBER DOOR SEAL



When designing door frames,
compensate a .200" door
gap to allow clearance
for the door seal.



- SEALS OFF DOOR PERIMETER FROM COOLANT OR WATER
- PRESSES RIGHT INTO T-SLOT OF EXTRUSION
- BLACK FOAM RUBBER

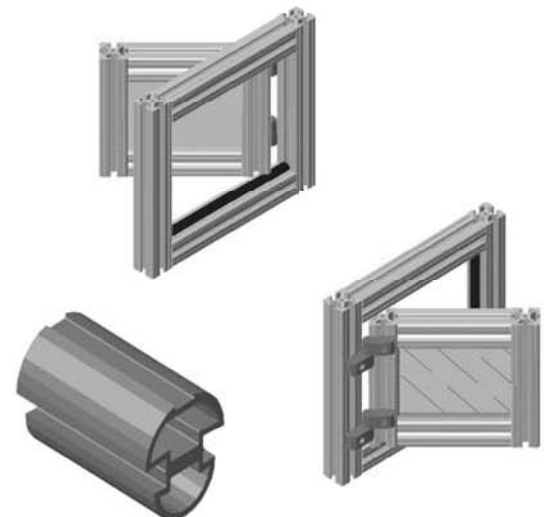
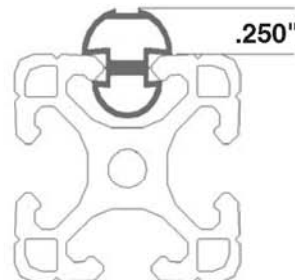
15 SERIES RUBBER DOOR SEAL

SOLD BY THE FOOT

15AC8782

15 SERIES
RUBBER DOOR SEAL

When designing door frames,
compensate a .200" door
gap to allow clearance
for the door seal.


















- SEALS OFF DOOR PERIMETER FROM COOLANT OR WATER
- PRESSES RIGHT INTO T-SLOT OF EXTRUSION
- BLACK SILICONE RUBBER

Grabber Catch Assemblies

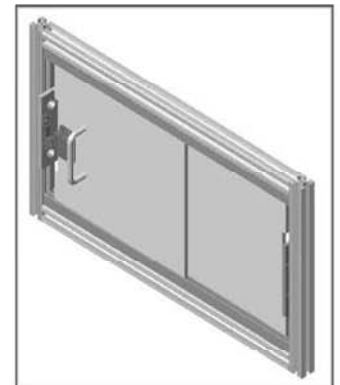
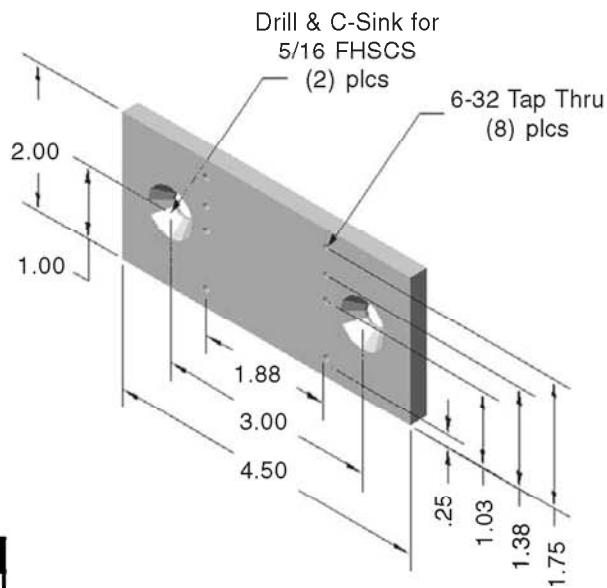
Components

A
S
S
E
M
B
L
I
E
S

						
	13AC7380	13AC7382	13AC7384	15AC7975	10AC7775	13AC7392
13AC7393 	1			1		
13AC7394 		1		1		
13AC7395 			1	1		
13AC7396 	1				1	
13AC7397 		1			1	
13AC7398 			1		1	
13AC7400 	1					1
13AC7401 		1				1
13AC7402 			1			1

15AC7975

15 SERIES
KEEPER PANEL MOUNT PLATE



RECOMMENDED HARDWARE

Qty	Description	Part Number
2	5/16-18 x 5/8 FHSCS	13FA3353
2	5/16-18 ECONOMY T-NUT	15FA3501

For additional fasteners and t-nuts, see pages 130-135

STANDARD DOOR HANDLES

15AC7950

LOCKING CHROME DOOR HANDLE
(360° ROTATION)

15AC7953

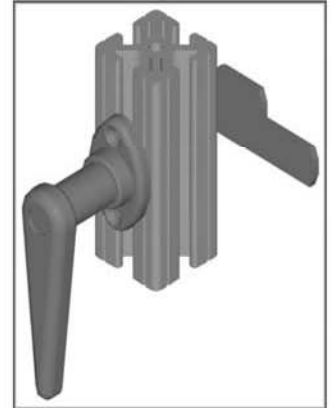
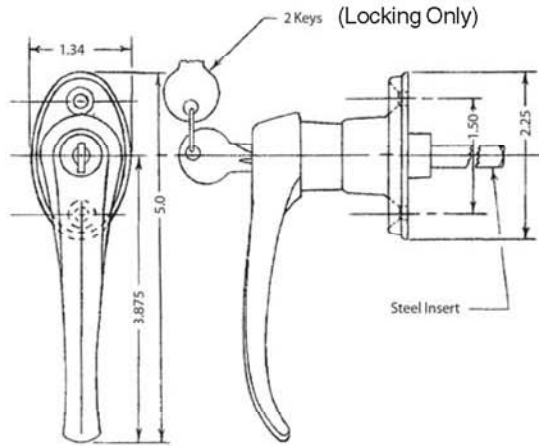
NON-LOCKING CHROME DOOR HANDLE
(360° ROTATION)

15AC7955

LOCKING BLACK DOOR HANDLE
(360° ROTATION)

15AC7957

NON-LOCKING BLACK DOOR HANDLE
(360° ROTATION)



- Door latch machining service on page 168

Hardware
Included!

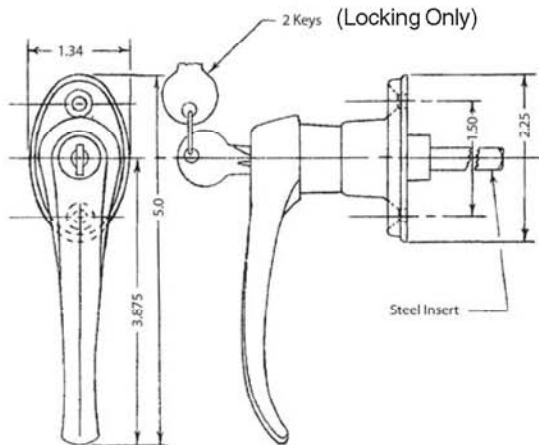
STANDARD DOUBLE SIDED DOOR HANDLES

15AC7951

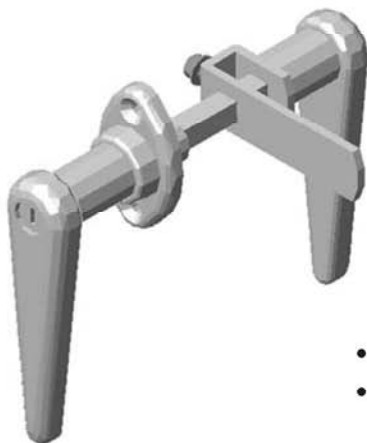
NON-LOCKING CHROME DOOR HANDLE
(360° ROTATION)

15AC7956

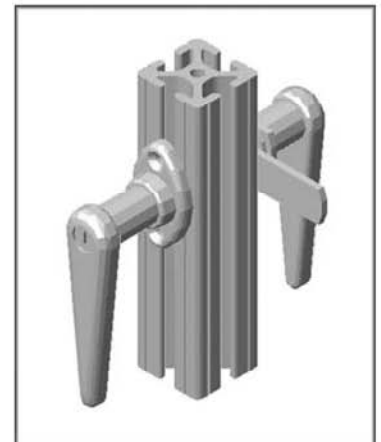
LOCKING CHROME DOOR HANDLE
(360° ROTATION)



Hardware
Included!



- Door latch machining service on page 168
- Allows for opening doors from inside the guard

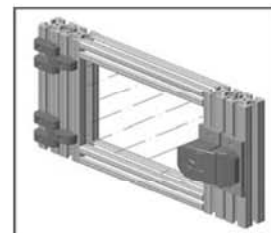
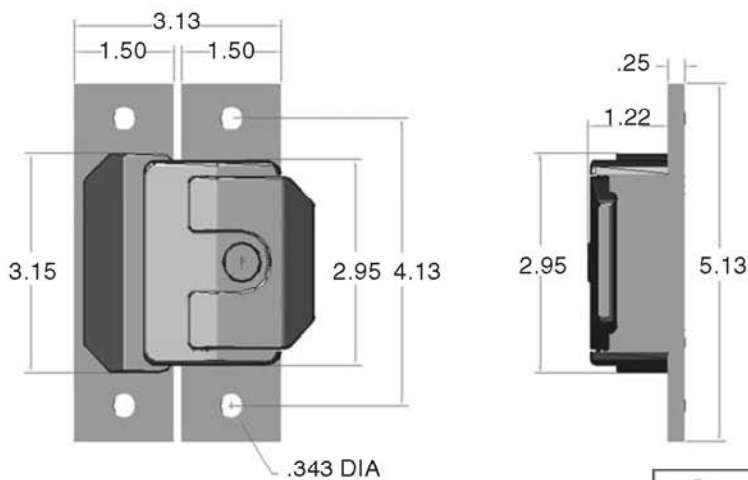


Accessories

15AC7958
LOCKING BLACK SLAM LATCH

15AC7962
NON-LOCKING BLACK SLAM LATCH

- Black Powder Coated
- Die-Cast Zinc Material
- Adjustable
- No Machining Required
- Very Strong Latching Mechanism



RECOMMENDED HARDWARE

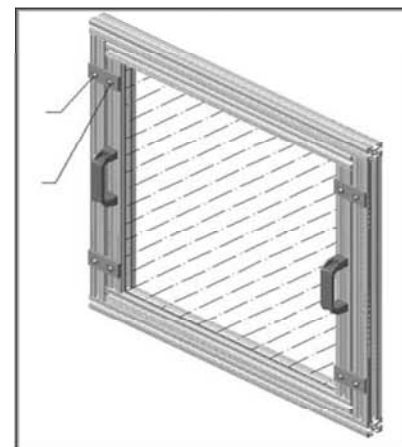
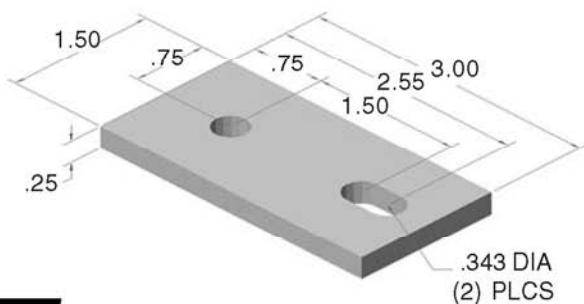
QTY	DESCRIPTION	PART #
4	5/16-18 x 5/8 FBHSCS	13FA3331
4	5/16-18 ECONOMY T-NUT	15FA3501



For additional fasteners and t-nuts, see pages 130-135

15AC7972
2 HOLE REMOVABLE DOOR STRAP

- UNBOLT FRAME SECTIONS
- EASY TO LOCATE
- STRONG



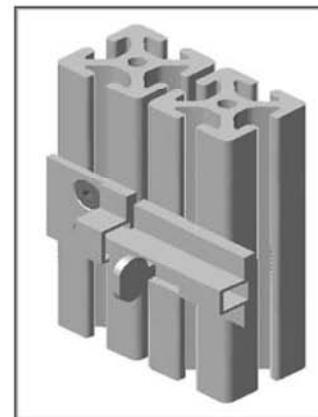
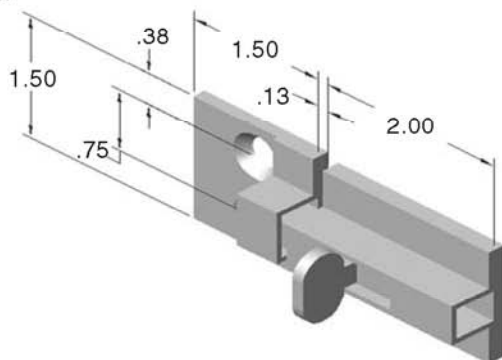
RECOMMENDED HARDWARE

Qty	Description	Part Number
2	5/16-18 x 5/8 FBHSCS	13FA3331
1	5/16-18 ECONOMY T-NUT	15FA3501
1	5/16-18 DROP IN T-NUT	15FA3505



For additional fasteners and t-nuts, see pages 130-135

15AC7984
HEAVY DUTY DOOR LATCH ASSEMBLY



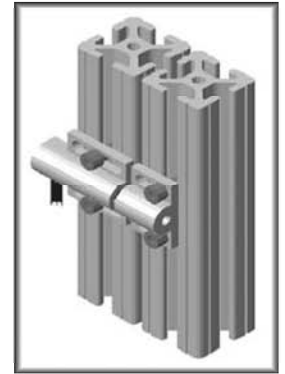
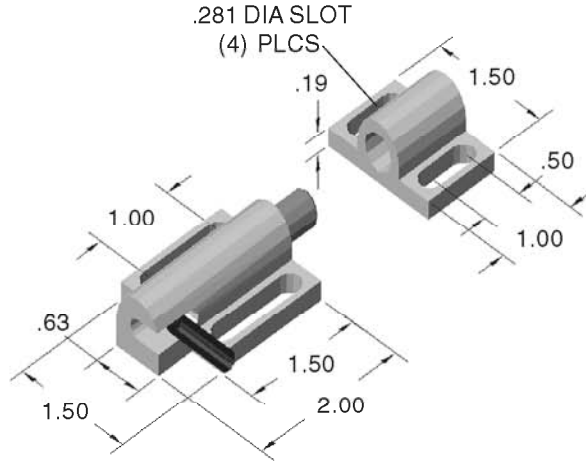
- STAINLESS STEEL
- EASY TO LOCATE
- STRONG

15AC8762

SIDE RELEASE DEADBOLT LATCH

HARDWARE INCLUDED!

- STRONG LATCHING MECHANISM
- SPRING LOADED
- CHAMFER LEADS ON PARTS FOR EASY ALIGNMENT
- ALUMINUM W/ STEEL HARDWARE

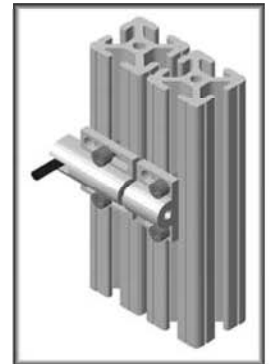
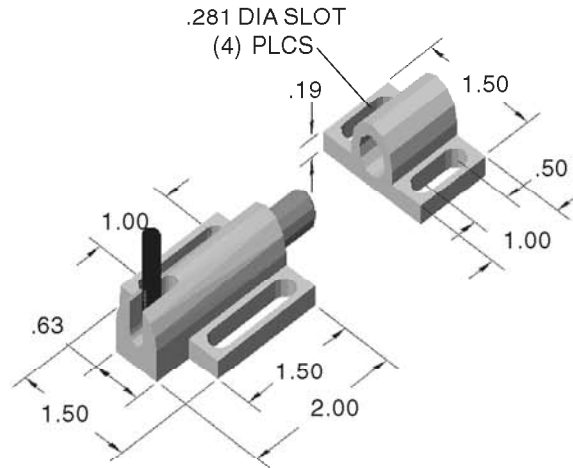


15AC8768

TOP RELEASE DEADBOLT LATCH

HARDWARE INCLUDED!

- STRONG LATCHING MECHANISM
- SPRING LOADED
- CHAMFER LEADS ON PARTS FOR EASY ALIGNMENT
- ALUMINUM W/ STEEL HARDWARE



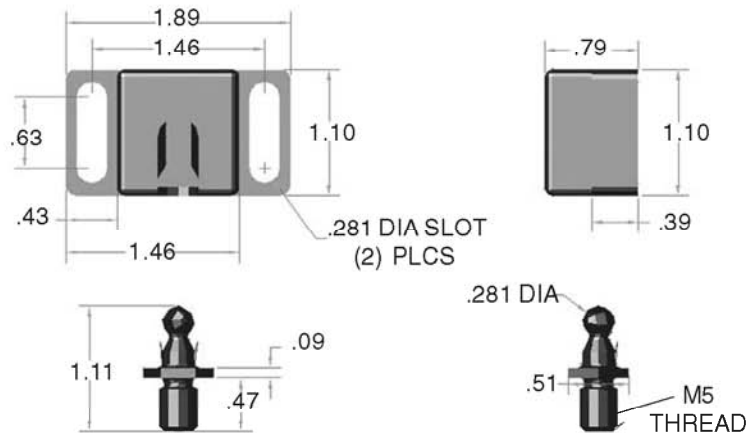
15AC7978

15 SERIES BALL LATCH CATCH



HARDWARE INCLUDED!

- STRONG LATCHING MECHANISM
- LATCH FROM TOP OR FRONT
- BLACK FIBERGLASS REINFORCED NYLON



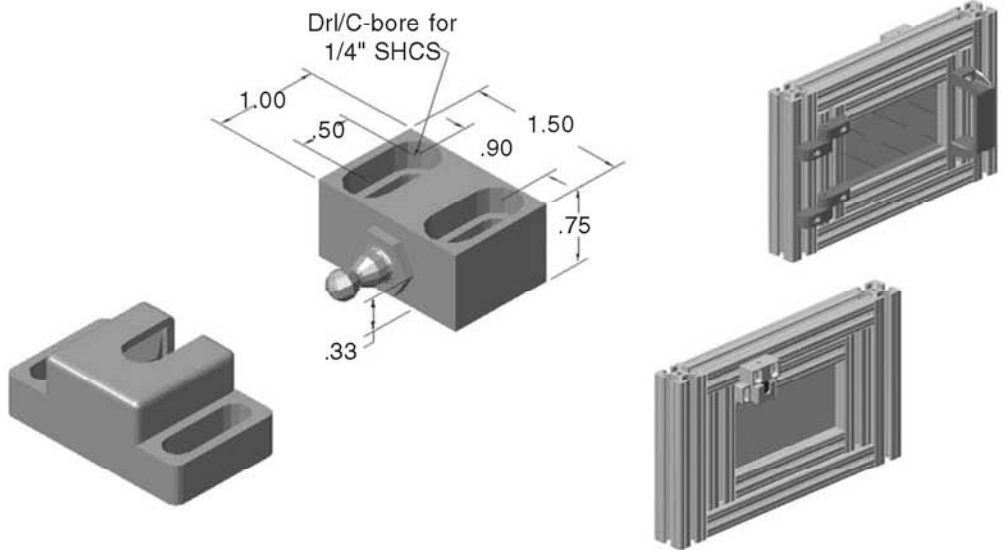
Accessories

15AC7980

15 SERIES
BALL LATCH CATCH W/ BRACKET



HARDWARE INCLUDED!

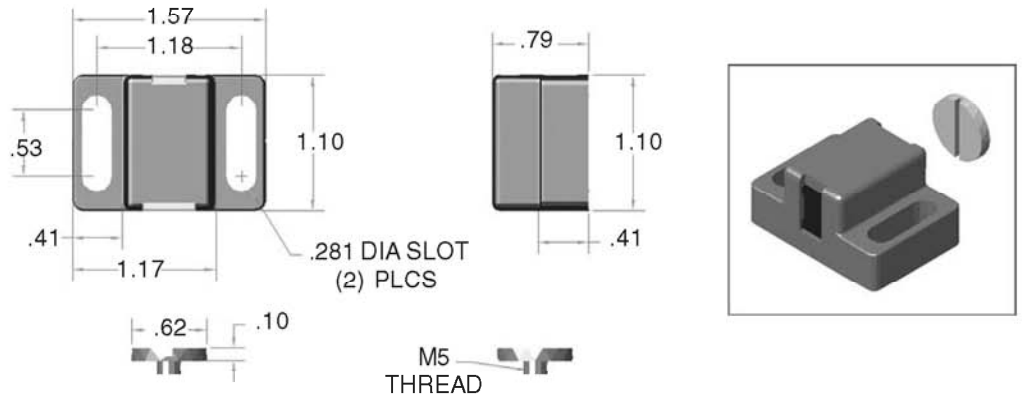


15AC7974

15 SERIES
MAGNETIC DOOR CATCH



HARDWARE INCLUDED!



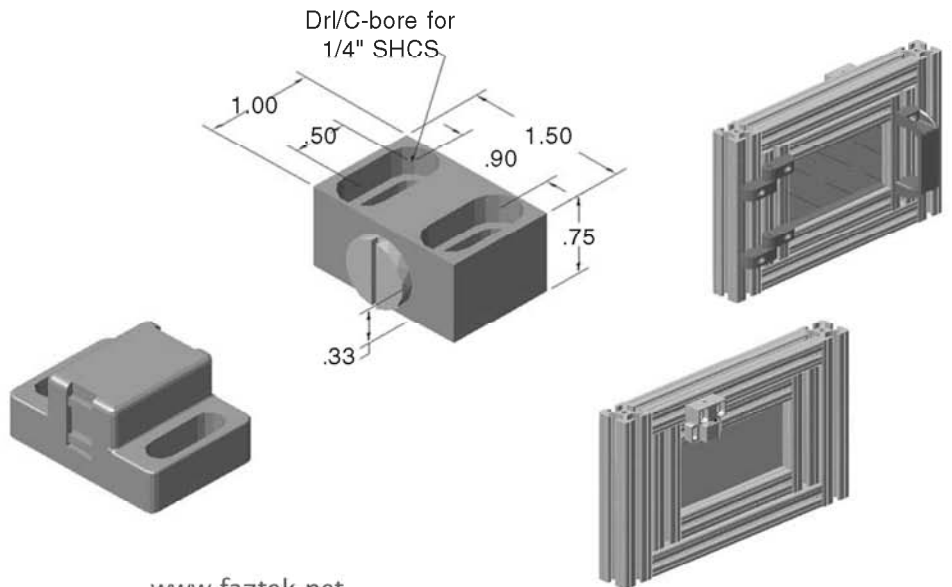
- QUICK LOCKING
- ADAPTABLE TO THE THCKNESS OF PLASTIC
- BLACK FIBERGLASS REINFORCED NYLON

15AC7976

15 SERIES
MAGNETIC DOOR CATCH W/ BRACKET



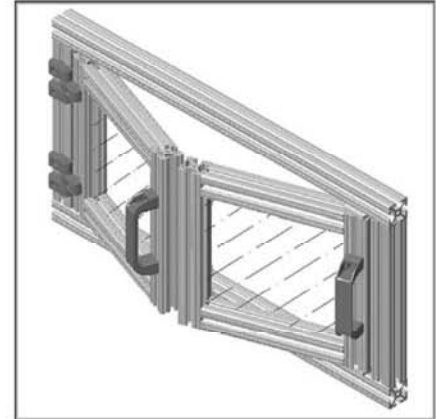
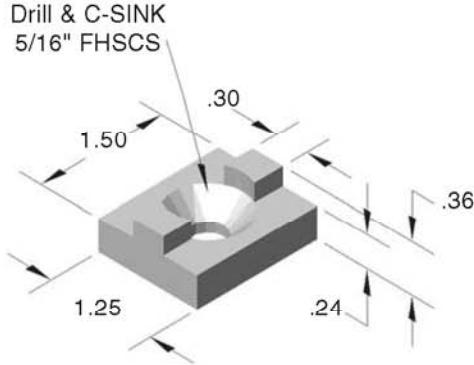
HARDWARE INCLUDED!



15AC8850

UHMW BI-FOLD DOOR GLIDE

HARDWARE INCLUDED!



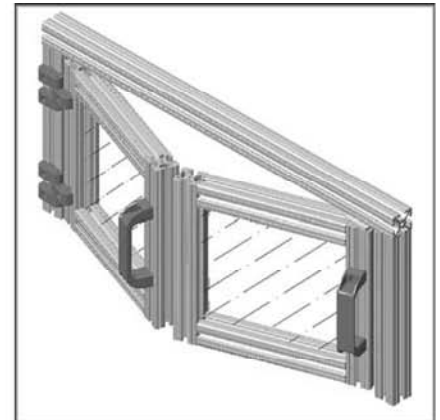
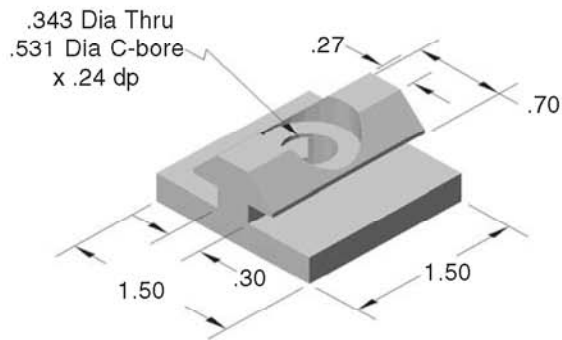
- GREAT ALTERNATIVE TO SLIDING DOORS
- SAVES SPACE
- WHITE UHMW POLYETHYLENE

Bi-fold door formula on page 34

15AC8852

UHMW HANGING BI-FOLD DOOR GLIDE

HARDWARE INCLUDED!



- GREAT ALTERNATIVE TO SLIDING DOORS
- SAVES SPACE
- WHITE UHMW POLYETHYLENE

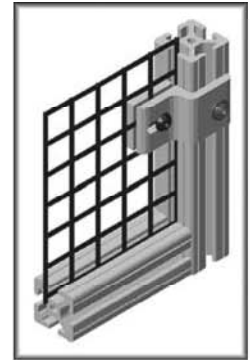
Bi-fold door formula on page 34



Accessories

15AC7105

15 SERIES
1.5" MESH RETAINER ASSY



- Assembly Tip -
Mesh retainers should be placed around the perimeter of a panel every 24" to properly secure the material.

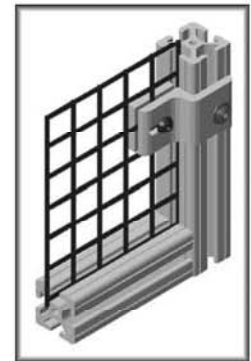
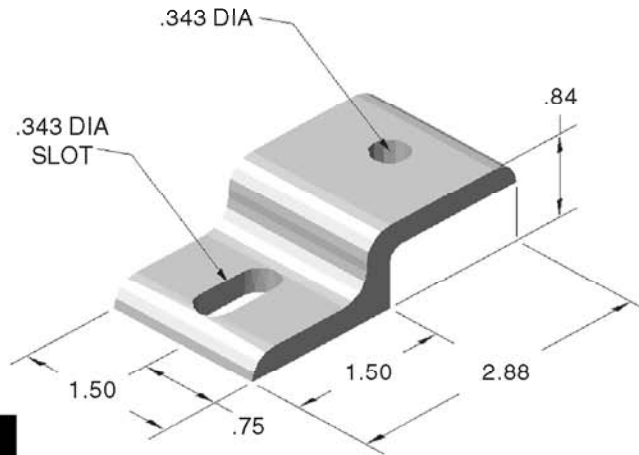
RECOMMENDED HARDWARE

QTY	DESCRIPTION	PART #
1	5/16-18 x 5/8 FBHSCS	13FA3331
1	5/16-18 ECONOMY T-NUT	15FA3501

For additional fasteners and t-nuts, see pages 130-135

15AC7107

15 SERIES
1.5" MESH RETAINER



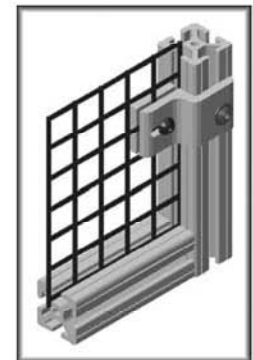
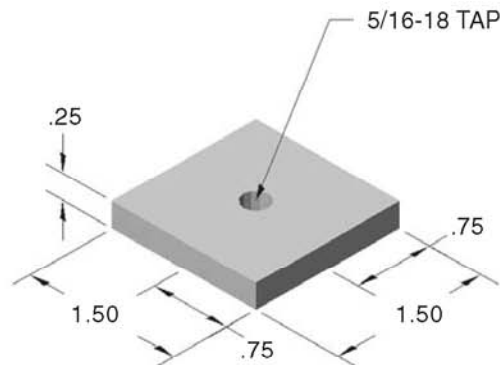
RECOMMENDED HARDWARE

QTY	DESCRIPTION	PART #
1	5/16-18 x 5/8 FBHSCS	13FA3331
1	5/16-18 ECONOMY T-NUT	15FA3501

For additional fasteners and t-nuts, see pages 130-135

15AC7109

15 SERIES
1.5" BACKING PLATE



RECOMMENDED HARDWARE

QTY	DESCRIPTION	PART #
1	5/16-18 x 3/4 BHSCS	13FA3323

For additional fasteners and t-nuts, see pages 130-135



GRAVITY FLOW RACKS



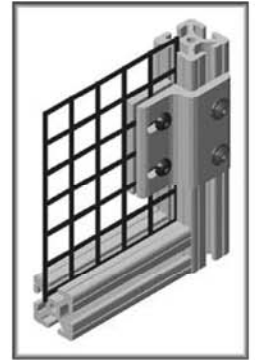
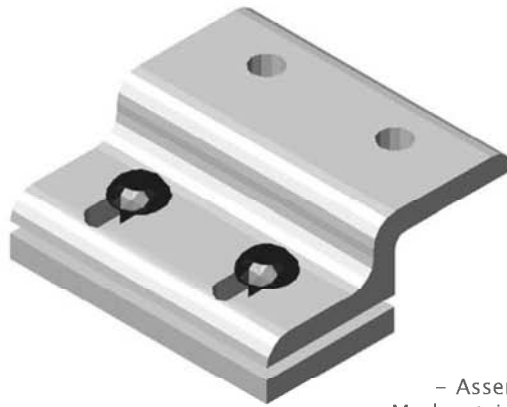
SLIDING DOORS



OFFICE CUBICALS

15AC7117

15 SERIES
3.0" MESH RETAINER ASSY



RECOMMENDED HARDWARE

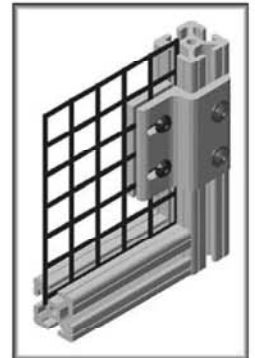
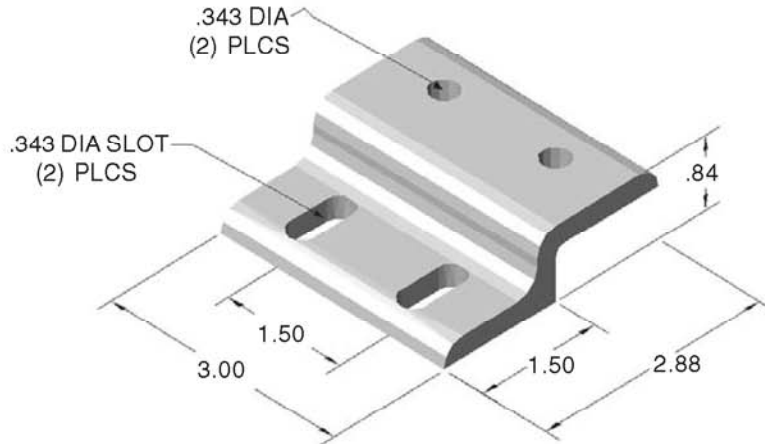
QTY	DESCRIPTION	PART #
2	5/16-18 x 5/8 FBHSCS	13FA3331
1	5/16-18 DOUBLE T-NUT	15FA3502

For additional fasteners and t-nuts, see pages 130-135

- Assembly Tip -
Mesh retainers should be placed around the perimeter of a panel every 24" to properly secure the material.

15AC7112

15 SERIES
3.0" MESH RETAINER



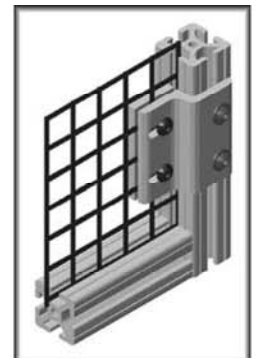
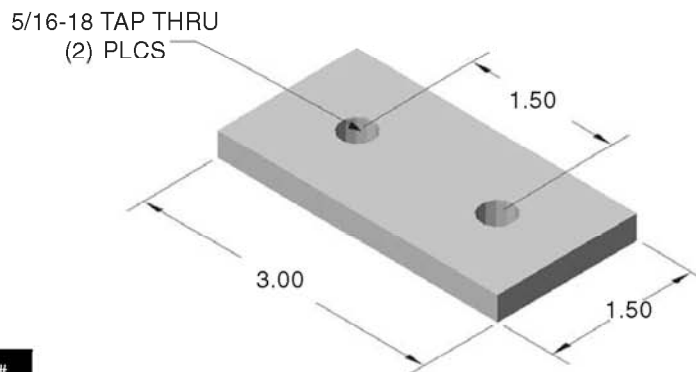
RECOMMENDED HARDWARE

QTY	DESCRIPTION	PART #
2	5/16-18 x 5/8 FBHSCS	13FA3331
1	5/16-18 DOUBLE T-NUT	15FA3502

For additional fasteners and t-nuts, see pages 130-135

15AC7114

15 SERIES
3.0" BACKING PLATE



RECOMMENDED HARDWARE

QTY	DESCRIPTION	PART #
2	5/16-18 x 3/4 BHSCS	13FA3323

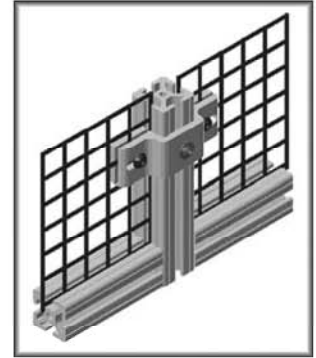
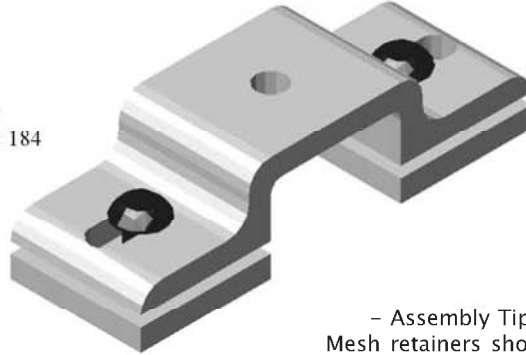
For additional fasteners and t-nuts, see pages 130-135

15AC7119

15 SERIES
1.5" DOUBLE MESH RETAINER ASSY

- Fast Assembly
- Cost Effective
- Clean Look

Dimensions for
15AC7115 below
& 15AC7109 on page 184



- Assembly Tip -
Mesh retainers should be placed around the perimeter of a panel every 24" to properly secure the material.

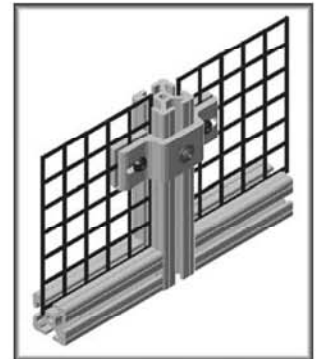
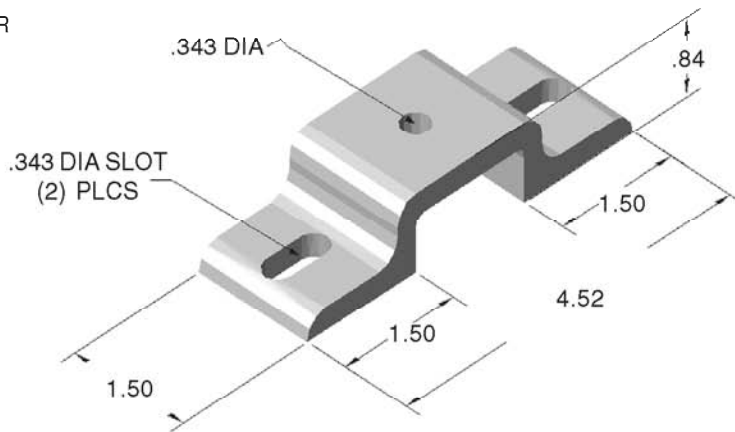
RECOMMENDED HARDWARE

QTY	DESCRIPTION	PART #
1	5/16-18 x 5/8 FBHSCS	13FA3331
1	5/16-18 ECONOMY T-NUT	15FA3501

For additional fasteners and t-nuts, see pages 130-135

15AC7115

15 SERIES
1.5" DOUBLE MESH RETAINER



RECOMMENDED HARDWARE

QTY	DESCRIPTION	PART #
1	5/16-18 x 5/8 FBHSCS	13FA3331
1	5/16-18 ECONOMY T-NUT	15FA3501

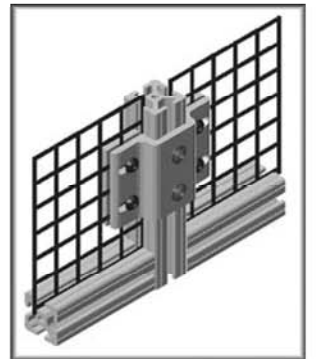
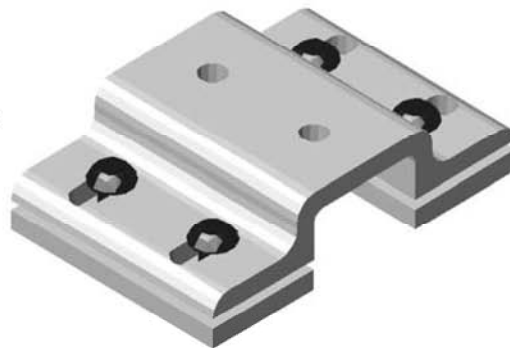
For additional fasteners and t-nuts, see pages 130-135

15AC7118

15 SERIES
3.0" DOUBLE MESH RETAINER ASSEMBLY

Dimensions for
15AC7114 on page 186
& 15AC7116 on page 188

- Fast Assembly
- Cost Effective
- Clean Look



- Assembly Tip -
Mesh retainers should be placed around the perimeter of a panel every 24" to properly secure the material.

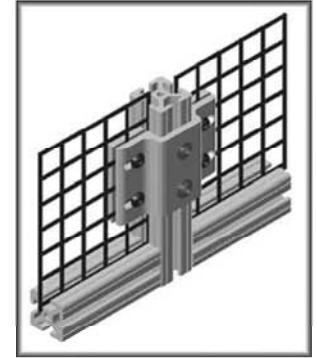
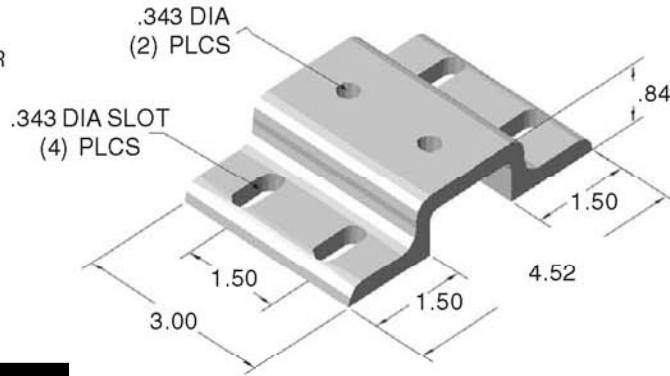
RECOMMENDED HARDWARE

QTY	DESCRIPTION	PART #
2	5/16-18 x 5/8 FBHSCS	13FA3331
1	5/16-18 DOUBLE T-NUT	15FA3502

For additional fasteners and t-nuts, see pages 130-135

15AC7116

15 SERIES
3.0" DOUBLE MESH RETAINER



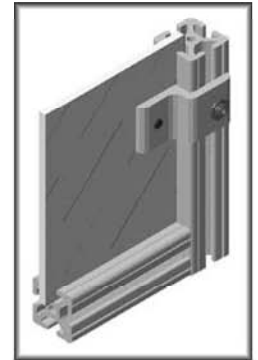
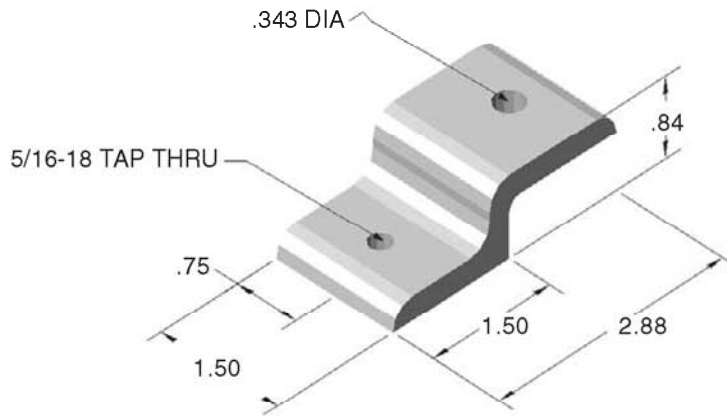
RECOMMENDED HARDWARE

QTY	DESCRIPTION	PART #
2	5/16-18 x 5/8 FBHSCS	13FA3331
1	5/16-18 DOUBLE T-NUT	15FA3502

For additional fasteners and t-nuts, see pages 130-135

15AC7110

15 SERIES
1.5" PANEL RETAINER



- Quick Panel Removal
- Strong Panel Fastening Method

RECOMMENDED HARDWARE

QTY	DESCRIPTION	PART #
2	5/16-18 x 5/8 FBHSCS	13FA3331
1	5/16-18 ECONOMY T-NUT	15FA3501

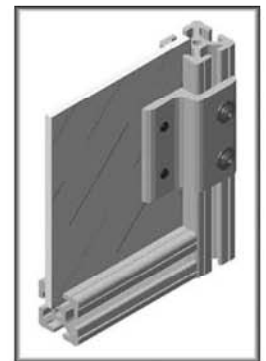
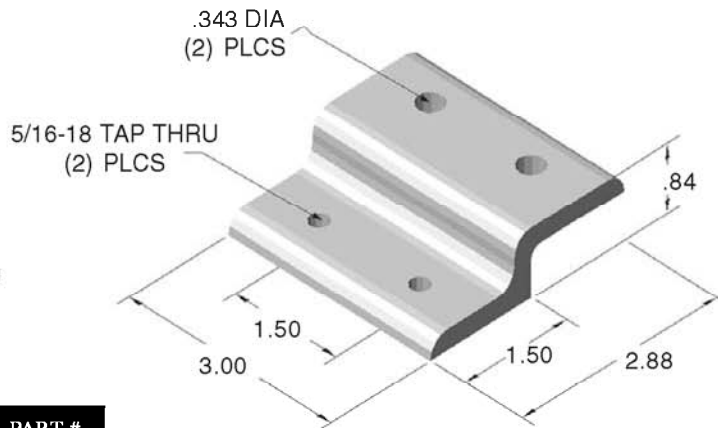
For additional fasteners and t-nuts, see pages 130-135

- Assembly Tip -

Panel retainers should be placed around the perimeter of a panel every 24" to properly secure the material.

15AC7113

15 SERIES
3.0" PANEL RETAINER



- Quick Panel Removal
- Strong Panel Fastening Method

RECOMMENDED HARDWARE

QTY	DESCRIPTION	PART #
4	5/16-18 x 5/8 FBHSCS	13FA3331
1	5/16-18 DOUBLE T-NUT	15FA3502

For additional fasteners and t-nuts, see pages 58, 63 - 64

- Assembly Tip -

Panel retainers should be placed around the perimeter of a panel every 24" to properly secure the material.

COUNTLESS OPPORTUNITIES "ONE NAME"



- Easy To Work With
- FAST Turnaround
- Free Design Assistance
- Extensive Product Line
- Completely Modular
- Excellent Customer Support
- Stocking Distributors
- Competitive Pricing

- Made in the USA
- Free Kit Packing
- FAST Custom Parts
- FAST Assemblies
- FAST, FLEXIBLE, FUNCTIONAL
- Full Inventory of Products
- 2D & 3D CAD Support
- Strong Vendor Relationships



Accessories



Call us @
877-FAZTEK4U



e-mail us @
sales@faztek.net



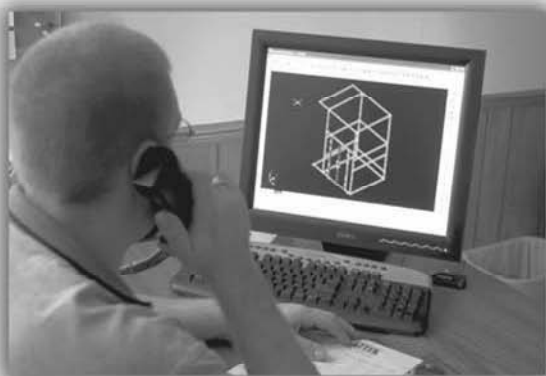
Fax your order to
260-482-7354

WE ARE EASY TO WORK WITH!

www.faztek.net
- 189 -



5120 Investment Drive • Fort Wayne, IN 46808
 260.482.7544 voice 260.482.7354 fax
www.faztek.net



FREE Design Assistance

- Faztek is ready to help you with your project:
- Experienced Engineers on staff
 - Ready to use CAD files created for use in most CAD systems
 - Call, E-Mail or Fax your project to us



FREE Kit Packaging

- Save time and money with Faztek's FREE kit packaging service
- Receive your project ready for quick assembly
 - All Extrusions, Fasteners and Parts are conveniently pre-packaged and labeled for easy assembly.



Custom Components

Can't find the parts you're looking for? No problem at Faztek! We can modify an existing part, create a new one or customize anything you need to complete your project. We're fast and flexible, just give us a call.



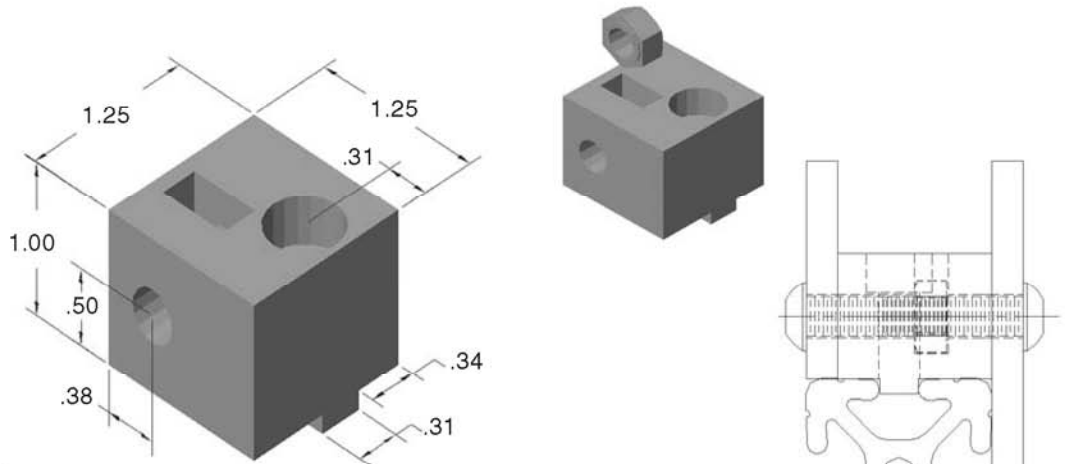
Fast Assembly

No matter what your t-slotted aluminum extrusion problem, Faztek has the solution. If you don't have the time or resources, we can assist you with complete project assembly at our facility. You'll receive your project completely assembled and ready to go.

15AC8700

15 SERIES
PANEL MOUNT BLOCK

**HARDWARE
INLCUDED!**

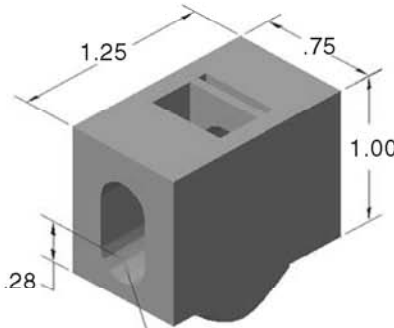


- Bolt kit included for extrusion mounting
- Black high strength nylon
- Used for flush or surface panel mounting
- Economical

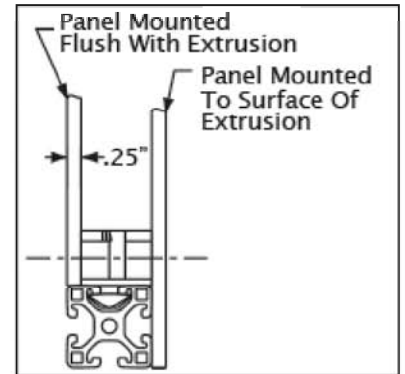
To calculate panel size,
subtract .13" from your inside
width and inside length.

15AC8748

15 SERIES
1/4 TURN PANEL MOUNT BLOCK
5/16-18 HARDWARE



Hex Nut Insert
for 5/16 BHSCS



15AC8702

15 SERIES
1/4 TURN PANEL MOUNT BLOCK
M8 x 1.25 HARDWARE



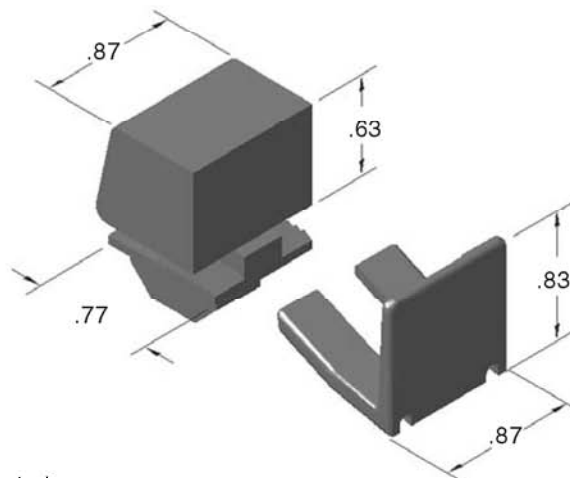
- Bolt kit included for panel mounting
- Black high strength nylon
- Used for flush or surface panel mounting
- Economical

To calculate panel size,
subtract .13" from your inside
width and inside length.

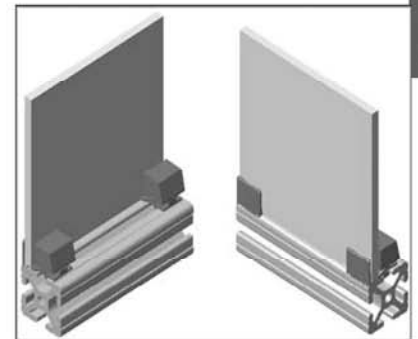
15AC8703

15 SERIES
PANEL RETAINING CLIP BLOCK

To calculate panel size,
subtract .45" from your inside
width and inside length.



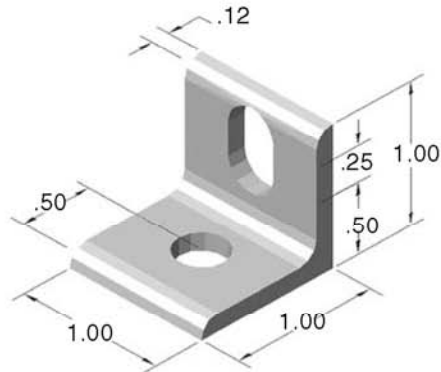
- NO HARDWARE REQUIRED
- Black fiberglass reinforced nylon
- Used for mouting variable size panels, tack boards, etc...
- Economical



See page 255
for clip block
disassembly tool
(13AC1600)

15AC8749

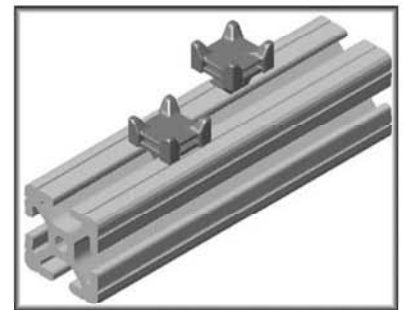
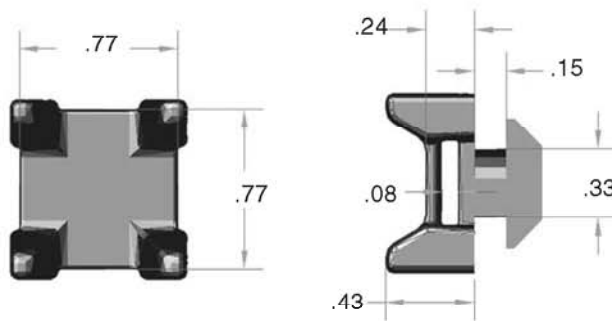
15 SERIES
PANEL MOUNT BRACKET



- Strong, but economical
- Easy to adjust
- Flush mount for 1/4" panels

15AC7305

15 SERIES
DROP-IN CABLE TIE BLOCK



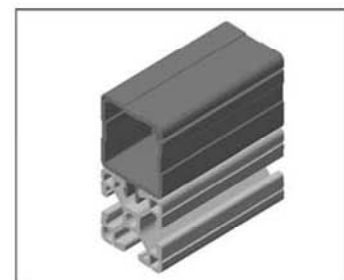
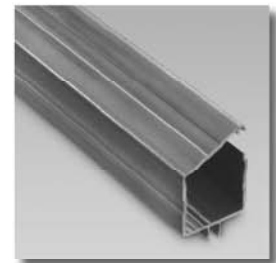
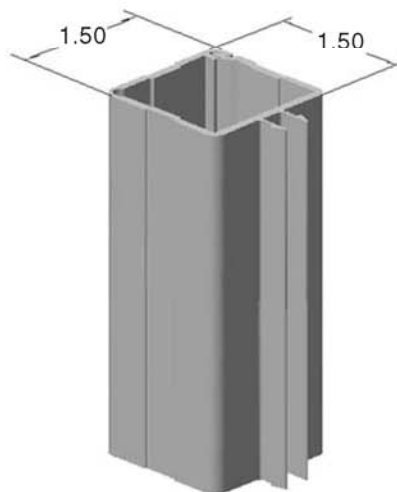
- Quarter Turn Feature
- Position Anywhere
- Clean Look
- Economical
- Black Fiberglass Reinforced Nylon

15AC8786

15 SERIES
WIRE WAY



STOCK LENGTH = 96.0"



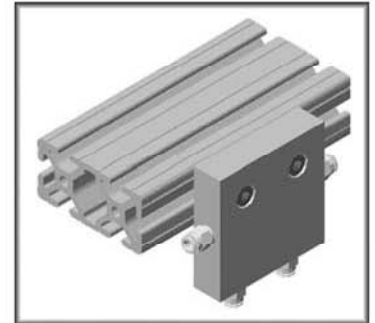
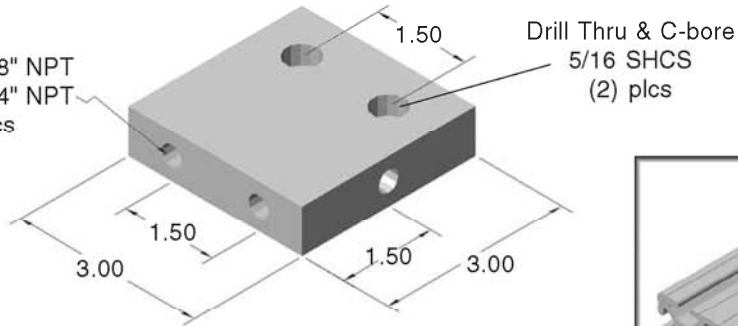
- Used to store electrical and pneumatic tubes
- Snap-in design for easy assembly
- Clean Look
- Economical
- NO HARDWARE REQUIRED
- Flexible hinge, snap locking lid

15 SERIES MANIFOLD DISTRIBUTION BLOCK

15AC8725
(1/8" NPT)

15AC8726
(1/4" NPT)

15AC8725 - 1/8" NPT
15AC8726 - 1/4" NPT
Typ. 4 Plcs



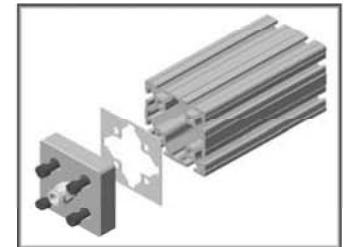
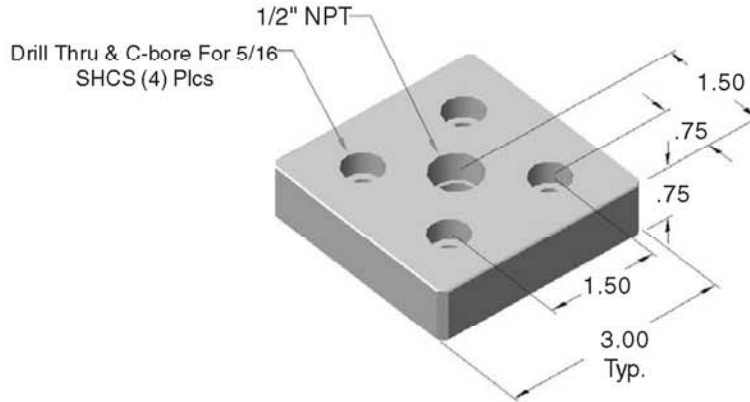
RECOMMENDED HARDWARE (W/ O-RING)

Qty	Description	Part Number
2	5/16-18 x 7/8 SHCS	13FA3327
2	5/16-18 ECONOMY T-NUT	15FA3501

For additional fasteners and t-nuts, see pages 130-135

15 SERIES PRESSURE MANIFOLD 1/2" NPT

15AC8727
(WITH GASKET)



RECOMMENDED HARDWARE FOR MOUNTING TO EXTRUSION END (W/ GASKET)

Qty	Description	Part Number
4	5/16-18 x 7/8 SHCS	13FA3327

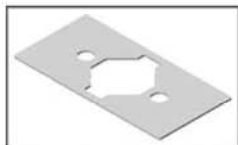
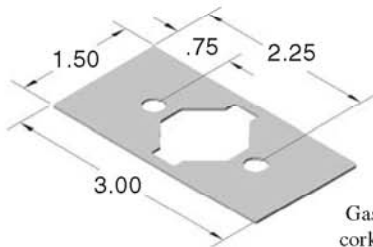
For additional fasteners and t-nuts, see pages 130-135

Technical data for pressure manifolds on page 29

Accessories

15AC8502

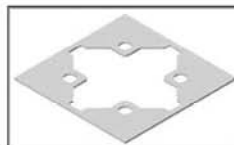
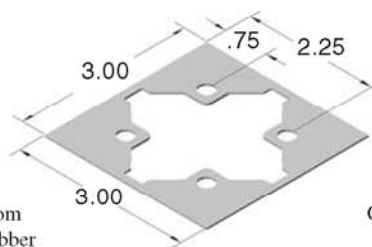
1.5" X 3" PRESSURE MANIFOLD GASKET



Gaskets are made from cork and synthetic rubber

15AC8503

3" X 3" PRESSURE MANIFOLD GASKET



15AC8505

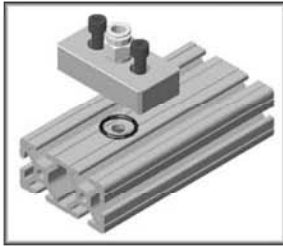
15 SERIES PRESSURE MANIFOLD O-RING



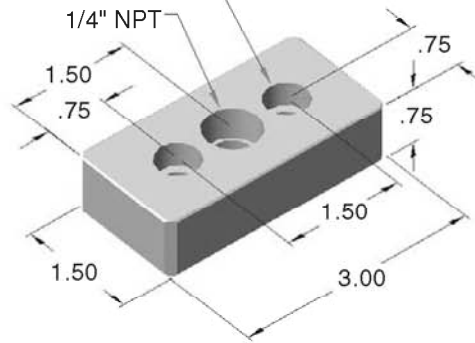
O-rings are made from buna rubber

15 SERIES PRESSURE MANIFOLD 1/4" NPT

15AC8712
(WITH O-RING)

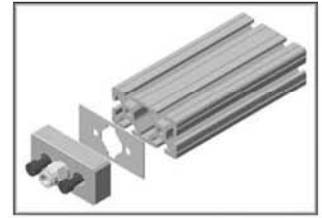


Drill Thru & C-Bore For 5/16 SHCS (2) Plcs



Technical data for pressure manifolds on page 29

15AC8706
(WITH GASKET)



RECOMMENDED HARDWARE FOR MOUNTING TO EXTRUSION END (W/ GASKET)

Qty	Description	Part Number
2	5/16-18 x 7/8 SHCS	13FA3327

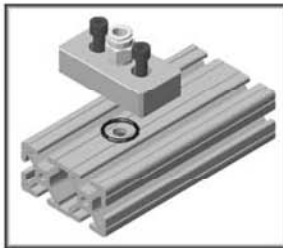
RECOMMENDED HARDWARE FOR MOUNTING TO EXTRUSION T-SLOT (W/ O-RING)

Qty	Description	Part Number
2	5/16-18 x 7/8 SHCS	13FA3327
2	5/16-18 ECONOMY T-NUT	15FA3501

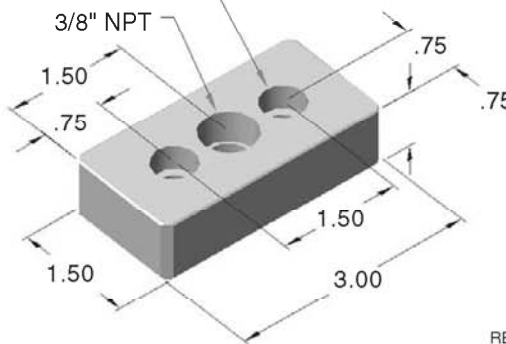
For additional fasteners and t-nuts, see pages 130-135

15 SERIES PRESSURE MANIFOLD 3/8" NPT

15AC8713
(WITH O-RING)

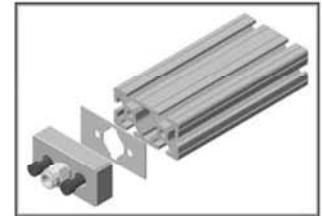


Drill Thru & C-Bore For 5/16 SHCS (2) Plcs



Technical data for pressure manifolds on page 29

15AC8707
(WITH GASKET)



RECOMMENDED HARDWARE FOR MOUNTING TO EXTRUSION END (W/ GASKET)

Qty	Description	Part Number
2	5/16-18 x 7/8 SHCS	13FA3327

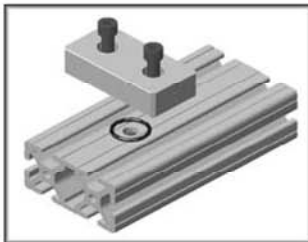
RECOMMENDED HARDWARE FOR MOUNTING TO EXTRUSION T-SLOT (W/ O-RING)

Qty	Description	Part Number
2	5/16-18 x 7/8 SHCS	13FA3327
2	5/16-18 ECONOMY T-NUT	15FA3501

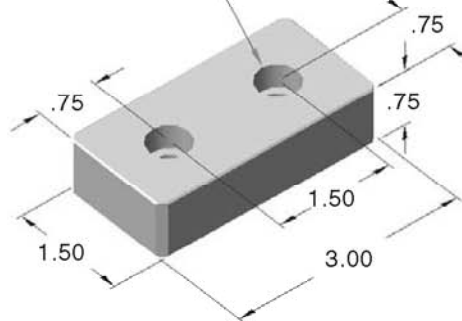
For additional fasteners and t-nuts, see pages 130-135

15 SERIES PRESSURE MANIFOLD - BLANK

15AC8714
(WITH O-RING)

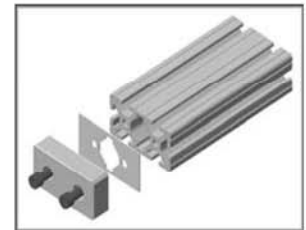


Drill Thru & C-bore For 5/16 SHCS (2) Plcs



Technical data for pressure manifolds on page 29

15AC8709
(WITH GASKET)



RECOMMENDED HARDWARE FOR MOUNTING TO EXTRUSION END (W/ GASKET)

Qty	Description	Part Number
2	5/16-18 x 7/8 SHCS	13FA3327

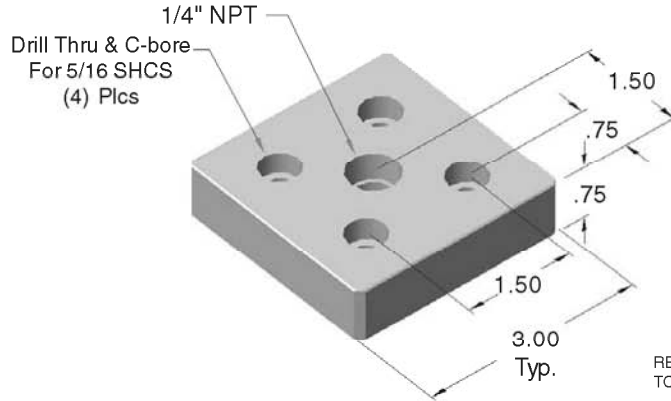
RECOMMENDED HARDWARE FOR MOUNTING TO EXTRUSION T-SLOT (W/ O-RING)

Qty	Description	Part Number
2	5/16-18 x 7/8 SHCS	13FA3327
2	5/16-18 ECONOMY T-NUT	15FA3501

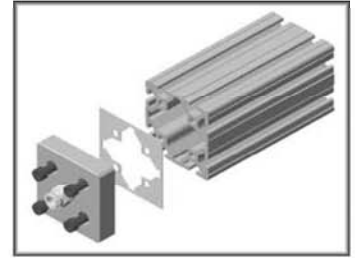
For additional fasteners and t-nuts, see pages 130-135

15 SERIES PRESSURE MANIFOLD 1/4" NPT

15AC8715
(WITH O-RING)



15AC8710
(WITH GASKET)



RECOMMENDED HARDWARE FOR MOUNTING TO EXTRUSION END (W/ GASKET)

Qty	Description	Part Number
4	5/16-18 x 7/8 SHCS	13FA3327

RECOMMENDED HARDWARE FOR MOUNTING TO EXTRUSION T-SLOT (W/O-RING)

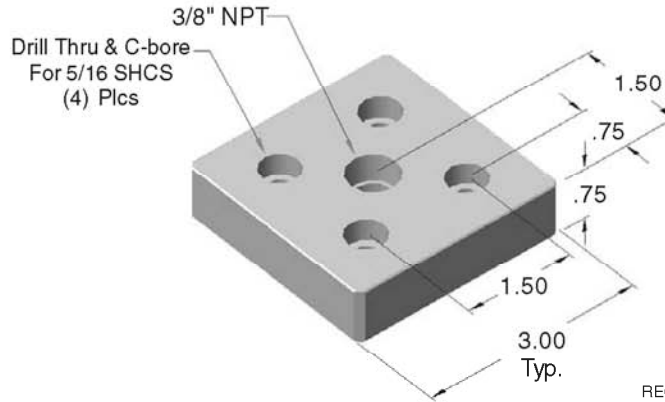
Qty	Description	Part Number
4	5/16-18 x 7/8 SHCS	13FA3327
4	5/16-18 ECONOMY T-NUT	15FA3501

Technical data for pressure manifolds on page 29

For additional fasteners and t-nuts, see pages 130-135

15 SERIES PRESSURE MANIFOLD 3/8" NPT

15AC8716
(WITH O-RING)



15AC8711
(WITH GASKET)



RECOMMENDED HARDWARE FOR MOUNTING TO EXTRUSION END (W/ GASKET)

Qty	Description	Part Number
4	5/16-18 x 7/8 SHCS	13FA3327

RECOMMENDED HARDWARE FOR MOUNTING TO EXTRUSION T-SLOT (W/O-RING)

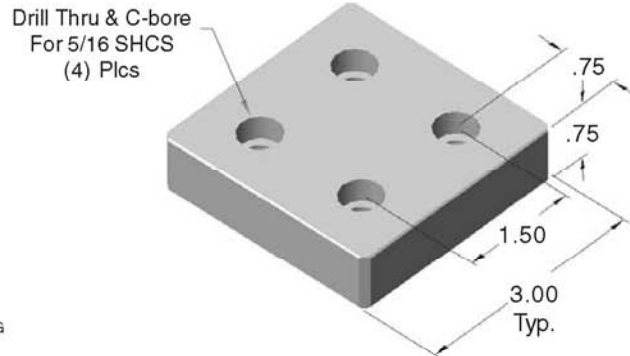
Qty	Description	Part Number
4	5/16-18 x 7/8 SHCS	13FA3327
4	5/16-18 ECONOMY T-NUT	15FA3501

Technical data for pressure manifolds on page 29

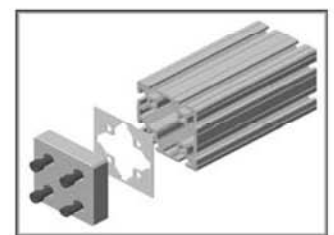
For additional fasteners and t-nuts, see pages 130-135

15 SERIES PRESSURE MANIFOLD - BLANK

15AC8717
(WITH O-RING)



15AC8708
(WITH GASKET)



RECOMMENDED HARDWARE FOR MOUNTING TO EXTRUSION END (W/ GASKET)

Qty	Description	Part Number
4	5/16-18 x 7/8 SHCS	13FA3327

RECOMMENDED HARDWARE FOR MOUNTING TO EXTRUSION T-SLOT (W/O-RING)

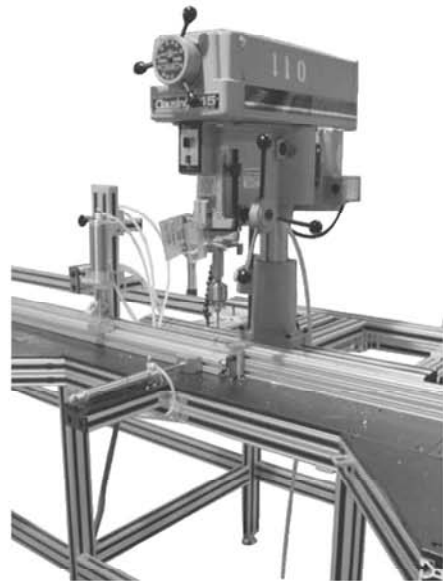
Qty	Description	Part Number
4	5/16-18 x 7/8 SHCS	13FA3327
4	5/16-18 ECONOMY T-NUT	15FA3501

Technical data for pressure manifolds on page 29

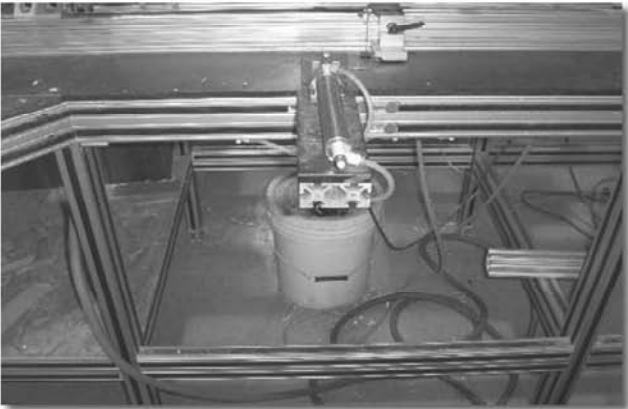
For additional fasteners and t-nuts, see pages 130-135



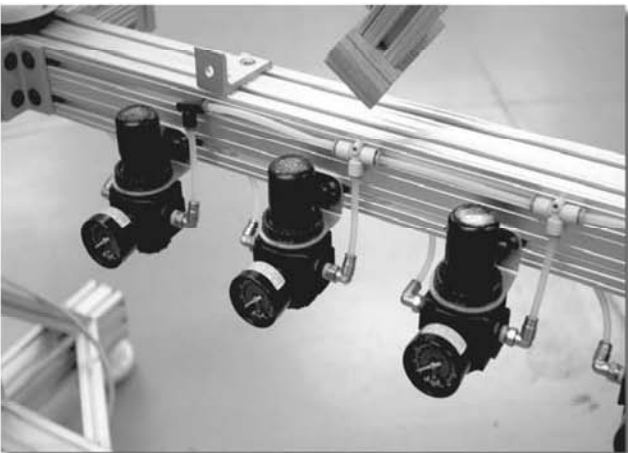
Cylinders Integrated w/ Extrusions



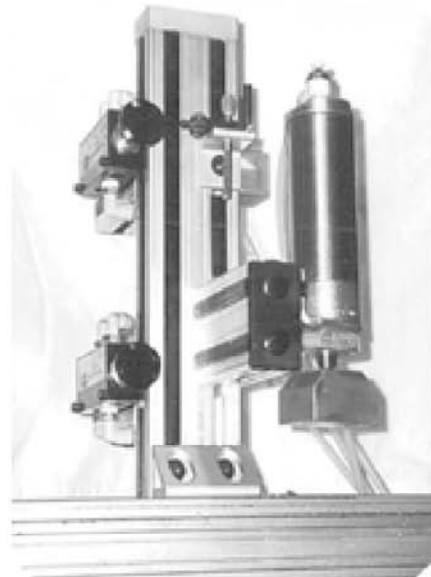
Access Hole Machine



Access Hole Machine - Close Up



FRL Center

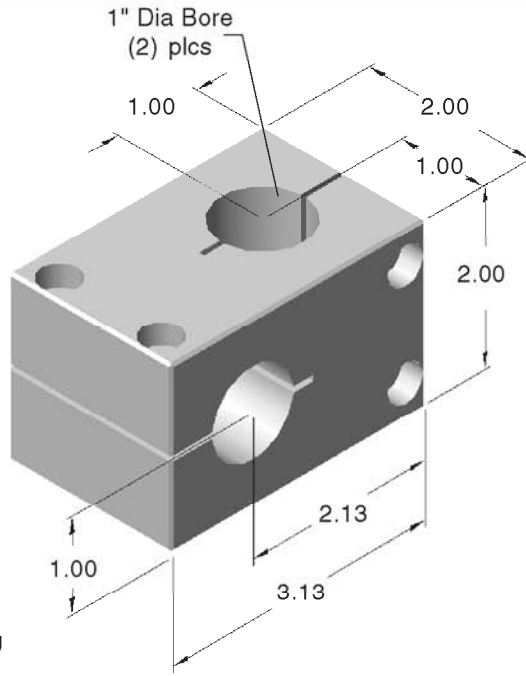


Pneumatic Stand

15AC8800

15 SERIES
1" STANCHION CROSS CLAMP

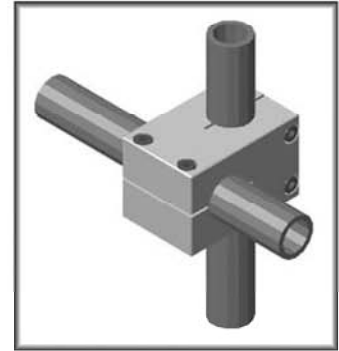
CLAMPING
HARDWARE
INCLUDED!



- Bolt kit included for stanchion clamping
- For 1" aluminum tube see page 258

IDEAL APPLICATIONS

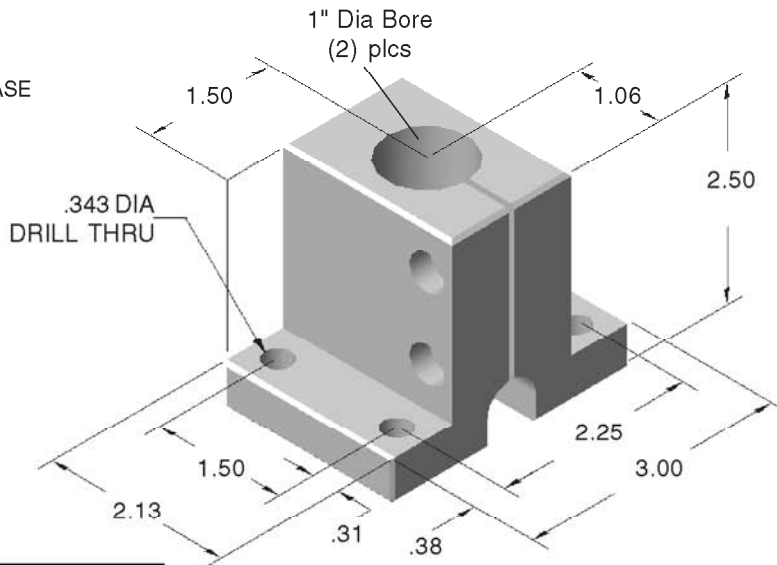
- Camera Mounts
- End of Arm Tooling
- Light Inspection Arms
- Machine Stops
- Any Multi-axis Application



15AC8801

15 SERIES
1" SINGLE SHAFT BASE

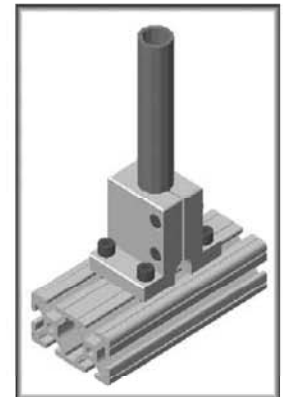
CLAMPING
HARDWARE
INCLUDED!



- Bolt kit included for stanchion clamping
- Clearance slot can be used for wire / cables
- For 1" aluminum tube see page 258

IDEAL APPLICATIONS

- Camera Mounts
- End of Arm Tooling
- Light Inspection Arms
- Machine Stops
- Any Multi-axis Application



RECOMMENDED HARDWARE

Qty	Description	Part Number
4	5/16-18 x 7/8 SHCS	13FA3327
4	5/16-18 ECONOMY T-NUT	15FA3501

For additional fasteners and t-nuts, see pages 130-135

Accessories

Running short on time?

Let us do it !

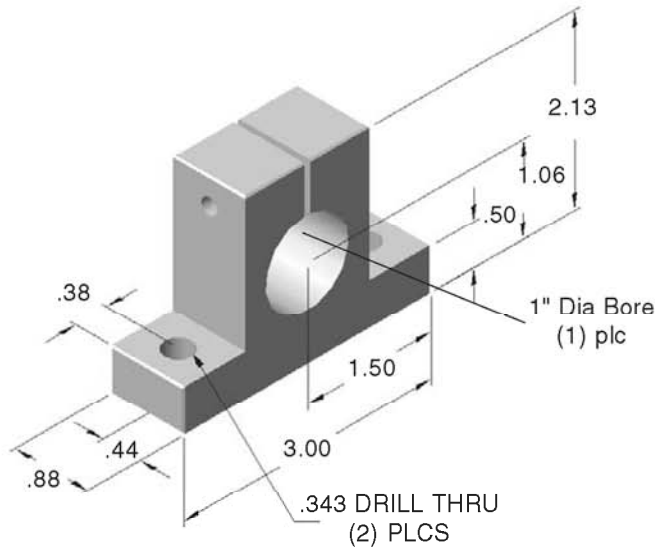
See page 297 for a FAST / Quality assembly service



15AC8802

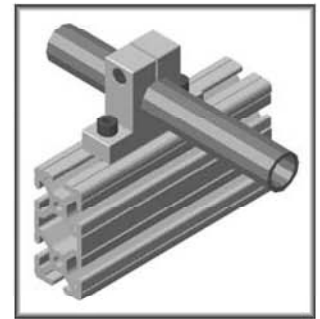
15 SERIES
1" SINGLE HORIZONTAL BASE

**CLAMPING
HARDWARE
INCLUDED!**



IDEAL APPLICATIONS

- Camera Mounts
- End of Arm Tooling
- Light Inspection Arms
- Machine Stops
- Any Multi-axis Application



RECOMMENDED HARDWARE

Qty	Description	Part Number
2	5/16-18 x 7/8 SHCS	13FA3327
2	5/16-18 ECONOMY T-NUT	15FA3501

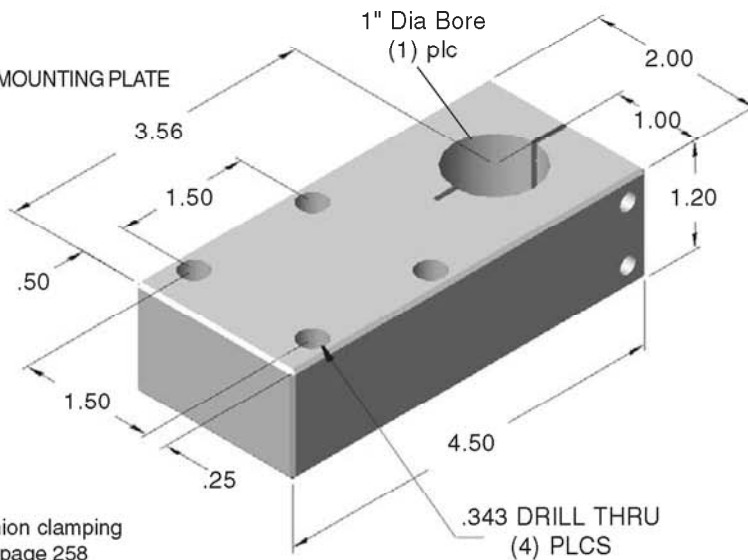
For additional fasteners and t-nuts, see pages 130-135

- Bolt kit included for stanchion clamping
- For 1" aluminum tube see page 258

15AC8804

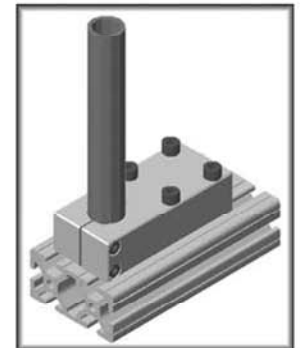
15 SERIES
1" SINGLE PREDRILLED MOUNTING PLATE

**CLAMPING
HARDWARE
INCLUDED!**



IDEAL APPLICATIONS

- Camera Mounts
- End of Arm Tooling
- Light Inspection Arms
- Machine Stops
- Any Multi-axis Application

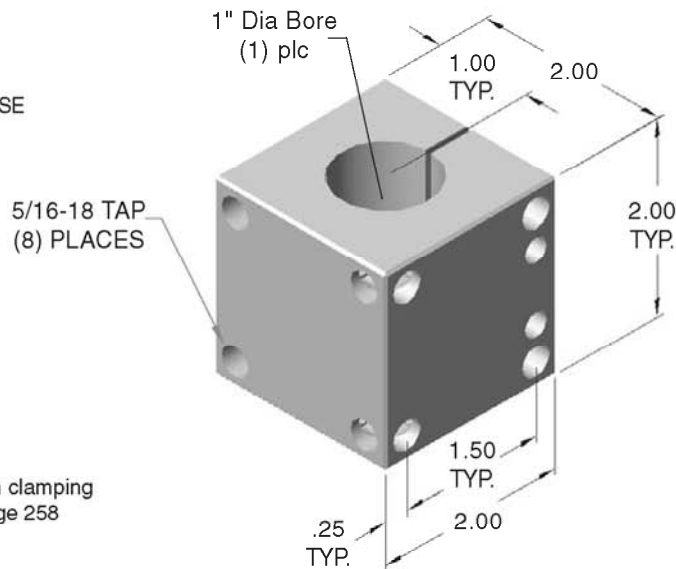


- Bolt kit included for stanchion clamping
- For 1" aluminum tube see page 258

15AC8803

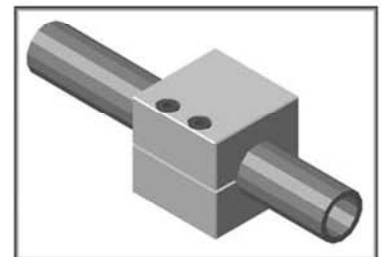
15 SERIES
1" SINGLE PRE-TAPPED BASE

**CLAMPING
HARDWARE
INCLUDED!**



IDEAL APPLICATIONS

- Camera Mounts
- End of Arm Tooling
- Light Inspection Arms
- Machine Stops
- Light Duty Presses
- Any Multi-axis Application



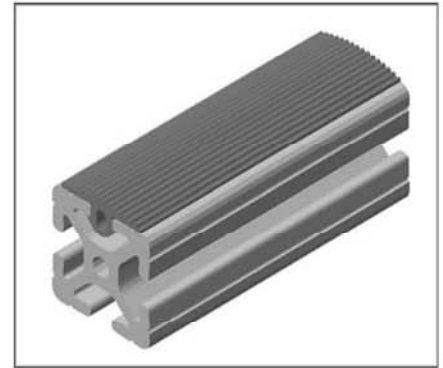
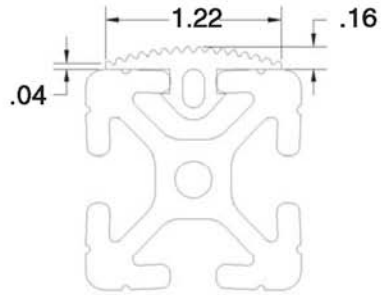
- Bolt kit included for stanchion clamping
- For 1" aluminum tube see page 258

15 SERIES ANTI-SKID COVER

SOLD BY THE FOOT

15AC8776

15 SERIES
ANTI-SKID COVER



- PROTECT THE EXTRUSION SURFACE
- PRESSES RIGHT INTO T-SLOT OF EXTRUSION
- BLACK SILICONE RUBBER



Accessories

