

SECTION 4

13/15 SERIES

FRACTIONAL, METRIC, AND UNIVERSAL HARDWARE

**BOLTS, WASHERS,
HEX NUTS**



**T-NUTS: ECONOMY,
STANDARD, DROP-IN**



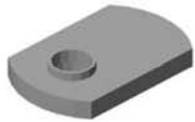
**ANCHOR / BUTT
FASTENERS**



END FASTENERS



15 SERIES T-NUTS



ECONOMY T-NUT

- Low cost, high strength



DROP-IN T-NUT W/ SET SCREW

- High strength
- Easy to add or reposition
- Secures for fast assembly
- Extra thread engagement
- Use a 3/32" hex wrench to tighten the set screw
- Not recommended for use with 15EX1515UL



DOUBLE ECONOMY T-NUT

- Low cost, high strength
- Fast assembly for plates
- 1.5" center lines
- Drop-in feature



DROP-IN T-NUT

- High strength
- Flexible handle
- Easy to add
- Extra thread engagement
- Rubber nub can be used as a friction point



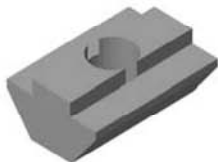
TRIPLE ECONOMY T-NUT

- Low cost, high strength
- Fast assembly for plates
- 1.5" center lines
- Drop-in feature



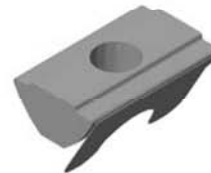
DROP-IN T-NUT W/ ALIGNMENT BALL

- High strength
- Easy to add or reposition
- Extra thread engagement
- Spring loaded ball
- Secures for fast assembly
- Not recommended for use with 15EX1515UL



HI-TORQUE T-NUT

- Low cost, high strength
- Extra thread engagement



DROP-IN T-NUT W/ SPRING LEAF

- For use with 15EX1515UL
- High strength
- Easy to add or reposition
- Extra thread engagement
- Spring leaf - holds in place
- Secures for fast assembly



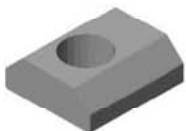
DOUBLE HI-TORQUE T-NUT

- Low cost, high strength
- Extra thread engagement



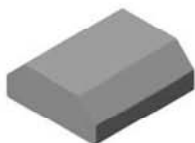
DROP-IN T-NUT BLANK PROFILE

- High strength
- Unlimited opportunities
- Machine it your way



STANDARD T-NUT

- Low cost, high strength
- Extra thread engagement



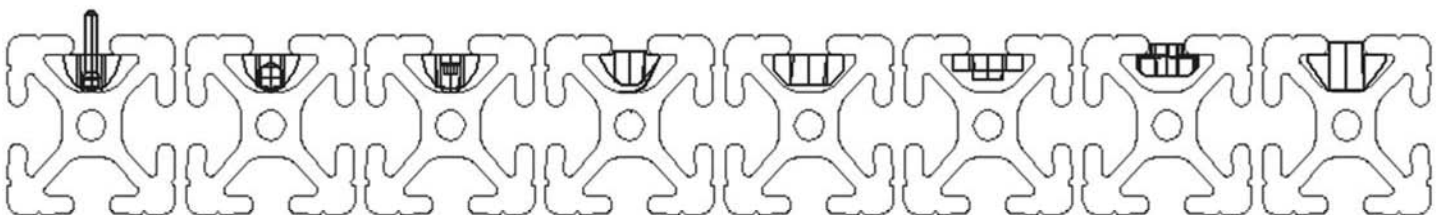
STANDARD T-NUT BLANK PROFILE

- High strength
- Unlimited opportunities
- Machine it your way



Z-NUT

- High strength
- Easy to add or reposition
- Secures for fast assembly
- Rotates 90 and locks in place



Rubber Handle

Alignment Ball

Set Screw

Spring Leaf

Standard

Economy

Z-Nut

Hi-Torque

15 SERIES T-NUT CHART

PART #	5/16-18	WIDTH	FINISH	TAP LOCATION	MATERIAL TYPE
15FA3501	ECONOMY T-NUT	.625	BLACK ZINC	OFFSET	LOW CARBON STEEL
15FA3502	DOUBLE ECONOMY T-NUT	.500	BLACK ZINC	CENTERED	LOW CARBON STEEL
15FA3503	STANDARD T-NUT	.625	BLACK ZINC	OFFSET	12L14 CARBON STEEL
15FA3504	DROP-IN T-NUT	.500	BLACK ZINC	OFFSET	12L14 CARBON STEEL
15FA3505	DROP-IN T-NUT W/ SET SCREW	.500	BLACK ZINC	OFFSET	12L14 CARBON STEEL
15FA3511	DROP-IN T-NUT W/ ALIGNMENT BALL	.500	BLACK ZINC	OFFSET	12L14 CARBON STEEL
15FA3515	LONG DOUBLE ANCHOR T-NUT	.625	BLACK ZINC	CENTERED	12L14 CARBON STEEL
15FA3516	SHORT DOUBLE ANCHOR T-NUT	.625	BLACK ZINC	CENTERED	12L14 CARBON STEEL
15FA3520	TRIPLE ECONOMY T-NUT	.500	BLACK ZINC	CENTERED	LOW CARBON STEEL
15FA3522	DROP-IN T-NUT W/ SPRING LEAF	.500	BLACK ZINC	OFFSET	12L14 CARBON STEEL
15FA3530	DOUBLE HI-TORQUE T-NUT	.705	BLACK ZINC	OFFSET	12L14 CARBON STEEL
15FA3532	HI-TORQUE T-NUT	.705	BLACK ZINC	OFFSET	12L14 CARBON STEEL
15FA3538	ECONOMY T-NUT	.625	BLACK ZINC	CENTERED	12L14 CARBON STEEL
15FA3544	DROP-IN T-NUT W/ ALIGNMENT BALL	.500	NICKEL PLT	OFFSET	12L14 CARBON STEEL
15FA3600	ECONOMY T-NUT	.625	STAINLESS	OFFSET	12L14 CARBON STEEL

PART #	1/4-20	WIDTH	FINISH	TAP LOCATION	MATERIAL TYPE
15FA3403	STANDARD T-NUT	.625	BLACK ZINC	OFFSET	12L14 CARBON STEEL
15FA3405	DROP-IN T-NUT W/ SET SCREW	.500	BLACK ZINC	OFFSET	12L14 CARBON STEEL
15FA3506	ECONOMY T-NUT	.500	BLACK ZINC	OFFSET	LOW CARBON STEEL
15FA3507	DROP-IN T-NUT	.500	BLACK ZINC	OFFSET	12L14 CARBON STEEL
15FA3524	1/4 TURN Z-NUT	.635	BLACK ZINC	OFFSET	12L14 CARBON STEEL
15FA3536	DROP-IN T-NUT W/ ALIGNMENT BALL	.500	BLACK ZINC	OFFSET	12L14 CARBON STEEL
15FA3540	DROP-IN T-NUT W/ ALIGNMENT BALL	.500	NICKEL PLT	OFFSET	12L14 CARBON STEEL
15FA3558	ECONOMY T-NUT	.500	BLACK ZINC	CENTERED	12L14 CARBON STEEL
15FA3560	DROP-IN T-NUT W/ SET SCREW	.500	BLACK ZINC	OFFSET	12L14 CARBON STEEL

PART #	10-32	WIDTH	FINISH	TAP LOCATION	MATERIAL TYPE
15FA3407	DROP-IN T-NUT W/ SET SCREW	.500	BLACK ZINC	OFFSET	12L14 CARBON STEEL
16FA3609	DROP-IN T-NUT	.500	BLACK ZINC	OFFSET	12L14 CARBON STEEL
15FA3513	STANDARD T-NUT	.625	BLACK ZINC	OFFSET	12L14 CARBON STEEL
15FA3534	DROP-IN T-NUT W/ ALIGNMENT BALL	.500	BLACK ZINC	OFFSET	12L14 CARBON STEEL
15FA3542	DROP-IN T-NUT W/ ALIGNMENT BALL	.500	NICKEL PLT	OFFSET	12L14 CARBON STEEL



15 SERIES T-NUT CHART

PART #	M8 x 1.25	WIDTH	FINISH	TAP LOCATION	MATERIAL TYPE
15MFA3920	ECONOMY T-NUT	.625	BRIGHT ZINC	OFFSET	LOW CARBON STEEL
15MFA3921	STANDARD T-NUT	.625	BRIGHT ZINC	OFFSET	12L14 CARBON STEEL
15MFA3922	DROP-IN T-NUT	.500	BRIGHT ZINC	OFFSET	12L14 CARBON STEEL
15MFA3923	DROP-IN T-NUT W/ ALIGNMENT BALL	.500	BRIGHT ZINC	OFFSET	12L14 CARBON STEEL

PART #	M6 x 1.0	WIDTH	FINISH	TAP LOCATION	MATERIAL TYPE
15MFA3900	ECONOMY T-NUT	.625	BRIGHT ZINC	OFFSET	LOW CARBON STEEL
15MFA3902	DROP-IN T-NUT	.500	BRIGHT ZINC	OFFSET	12L14 CARBON STEEL
15MFA3932	1/4-TURN Z-NUT	.635	BRIGHT ZINC	OFFSET	12L14 CARBON STEEL
15MFA3928	DROP-IN T-NUT W/ ALIGNMENT BALL	.500	BRIGHT ZINC	OFFSET	12L14 CARBON STEEL

PART #	M5 x .8	WIDTH	FINISH	TAP LOCATION	MATERIAL TYPE
15MFA3925	STANDARD T-NUT	.625	BRIGHT ZINC	OFFSET	12L14 CARBON STEEL

PART #	BLANK T-NUT PROFILE	WIDTH	FINISH	TAP LOCATION	MATERIAL TYPE
15SS8006	STANDARD T-NUT BLANK	.500	PLAIN	-	12L14 CARBON STEEL
15SS8007	DROP-IN T-NUT BLANK	.500	PLAIN	-	12L14 CARBON STEEL
15SS8017	STANDARD T-NUT PROFILE - PER INCH	.625	PLAIN	-	12L14 CARBON STEEL
15SS8075	DROP-IN T-NUT PROFILE - 24" BAR	.500	PLAIN	-	12L14 CARBON STEEL
15SS8076	HI-TORQUE T-NUT PROFILE - 24" BAR	.500	PLAIN	-	12L14 CARBON STEEL



No Minimum Orders!

No Welding or Painting!



Everything You Need For Your T-Slotted Aluminum Extrusion Projects in One Place!

UNIVERSAL FASTENER CHARTS

5/16-18 FRACTIONAL (SAE) SIZES

5/16-18 SOCKET HEAD CAP SCREW (SHCS)			
PART #	DESCRIPTION	FINISH	TOOL
13FA3337	5/16-18 x 1/2 SHCS	BLACK ZINC	1/4 HEX
13FA3325	5/16-18 x 5/8 SHCS	BLACK ZINC	1/4 HEX
13FA3326	5/16-18 x 3/4 SHCS	BLACK ZINC	1/4 HEX
13FA3327	5/16-18 x 7/8 SHCS	BLACK ZINC	1/4 HEX
13FA3335	5/16-18 x 1 SHCS	BLACK ZINC	1/4 HEX
13FA3328	5/16-18 x 1-1/4 SHCS	BLACK ZINC	1/4 HEX
13FA3329	5/16-18 x 1-1/2 SHCS	BLACK ZINC	1/4 HEX
13FA3603	5/16-18 x 1-1/4 SHCS	STAINLESS	1/4 HEX

5/16-18 BUTTON HEAD SOCKET CAP SCREW (BHS CS)			
PART #	DESCRIPTION	FINISH	TOOL
13FA3321	5/16-18 x 1/2 BSHCS	BLACK ZINC	3/16 HEX
13FA3322	5/16-18 x 5/8 BSHCS	BLACK ZINC	3/16 HEX
13FA3323	5/16-18 x 3/4 BSHCS	BLACK ZINC	3/16 HEX
13FA3324	5/16-18 x 1 BSHCS	BLACK ZINC	3/16 HEX
13FA3600	5/16-18 x 1/2 BSHCS	STAINLESS	3/16 HEX
13FA3602	5/16-18 x 5/8 BSHCS	STAINLESS	3/16 HEX
13FA3604	5/16-18 x 1 BSHCS	STAINLESS	3/16 HEX

5/16-18 LOW HEAD SOCKET CAP SCREW (LHSCS)			
PART #	DESCRIPTION	FINISH	TOOL
13FA3354	5/16-18 x 5/8 LHSCS	BLACK ZINC	3/16 HEX
13FA3710	5/16-18 x 1-1/4 LHSCS	BLACK ZINC	3/16 HEX

5/16-18 FLANGED BUTTON HEAD CAP SCREW (FBHSCS)			
PART #	DESCRIPTION	FINISH	TOOL
13FA3330	5/16-18 x 1/2 FBHSCS	BLACK ZINC	3/16 HEX
13FA3331	5/16-18 x 5/8 FBHSCS	BLACK ZINC	3/16 HEX

5/16-18 DROP-IN T-BOLTS			
PART #	DESCRIPTION	FINISH	TOOL
13FA3720	5/16-18 x 3/4 T-BOLT	BLACK ZINC	N/A
13FA3721	5/16-18 x 1 T-BOLT	BLACK ZINC	N/A
13FA3722	5/16-18 x 1-1/4 T-BOLT	BLACK ZINC	N/A
13FA3723	5/16-18 x 1-1/2 T-BOLT	BLACK ZINC	N/A

5/16-18 CARRIAGE BOLTS			
PART #	DESCRIPTION	FINISH	TOOL
13FA3708	5/16-18 x 1 C-BOLT	BLACK ZINC	N/A
13FA3612	5/16-18 x 1 C-BOLT	STAINLESS	N/A

5/16-18 FLAT HEAD SOCKET CAP SCREW (FHSCS)			
PART #	DESCRIPTION	FINISH	TOOL
13FA3353	5/16-18 x 5/8 FHSCS	BLACK ZINC	3/16 HEX
13FA3342	5/16-18 x 3/4 FHSCS	BLACK ZINC	3/16 HEX

1/4-20 FRACTIONAL (SAE) SIZES

1/4-20 SOCKET HEAD CAP SCREW (SHCS)			
PART #	DESCRIPTION	FINISH	TOOL
13FA3303	1/4-20 x 1/2 SHCS	BLACK ZINC	3/16 HEX
13FA3304	1/4-20 x 5/8 SHCS	BLACK ZINC	3/16 HEX
13FA3305	1/4-20 x 3/4 SHCS	BLACK ZINC	3/16 HEX
13FA3311	1/4-20 x 7/8 SHCS	BLACK ZINC	3/16 HEX
13FA3306	1/4-20 x 1 SHCS	BLACK ZINC	3/16 HEX

1/4-20 BUTTON HEAD SOCKET CAP SCREW (BHS CS)			
PART #	DESCRIPTION	FINISH	TOOL
13FA3300	1/4-20 x 1/2 BHS CS	BLACK ZINC	5/32 HEX
13FA3301	1/4-20 x 5/8 BHS CS	BLACK ZINC	5/32 HEX
13FA3302	1/4-20 x 3/4 BHS CS	BLACK ZINC	5/32 HEX
13FA3336	1/4-20 x 1 BHS CS	BLACK ZINC	5/32 HEX
13FA3605	1/4-20 x 1/2 BHS CS	STAINLESS	5/32 HEX
13FA3606	1/4-20 x 3/4 BHS CS	STAINLESS	5/32 HEX

1/4-20 FLANGED BUTTON HEAD SOCKET CAP SCREW (FBHSCS)			
PART #	DESCRIPTION	FINISH	TOOL
13FA3308	1/4-20 x 3/8 FBHSCS	BLACK ZINC	3/16 HEX
13FA3309	1/4-20 x 1/2 FBHSCS	BLACK ZINC	3/16 HEX
13FA3310	1/4-20 x 3/4 FBHSCS	BLACK ZINC	3/16 HEX

1/4-20 LOW HEAD SOCKET CAP SCREW (LHSCS)			
PART #	DESCRIPTION	FINISH	TOOL
13FA3360	1/4-20 x 1/2 LHSCS	BLACK ZINC	5/32 HEX
13FA3362	1/4-20 x 1 LHSCS	BLACK ZINC	5/32 HEX

1/4-20 FLAT HEAD SOCKET CAP SCREW (FHSCS)			
PART #	DESCRIPTION	FINISH	TOOL
13FA3110	1/4-20 x 1/2 FHSCS	BLACK ZINC	5/32 HEX
13FA3111	1/4-20 x 5/8 FHSCS	BLACK ZINC	5/32 HEX
13FA3126	1/4-20 x 7/8 FHSCS	BLACK ZINC	5/32 HEX
13FA3127	1/4-20 x 1 FHSCS	BLACK ZINC	5/32 HEX

1/4-20 CARRIAGE BOLTS			
PART #	DESCRIPTION	FINISH	TOOL
13FA3709	1/4-20 x 3/4 C-BOLT	BLACK ZINC	N/A

EXPANDED CAPABILITIES USE FRACTIONAL EXTRUSIONS WITH METRIC HARDWARE!

15 Series Fraction to Metric Crossover Chart

Fractional	Metric	Description
15FAC3880	15MFAC3720	Anchor Fastener
15FAC3888	15MFAC3728	Anchor Fastener w/Drop-In
15FAC3865	15MFAC3710	End Fastener
15FA3501	15MFA3920	Economy T-Nut
15FA3504	15MFA3922	Drop-In T-Nut
15FA3511	15MFA3923	Drop-In T-Nut w/Ball Detent
13FA3331	13MFA3613	Button Head Socket Cap Screw
13FA3327	13MFA3609	Socket Head Cap Screw

Fastener Torque Specifications

- The following ratings are measured in ft-lbs.
- These torque specifications need to be met to engage the drop-lock feature.
- Proper torque ensures a vibration proof connection

Fastener Description	Tested Extrusion	Torque (min) ft-lbs	Torque (max) ft-lbs
15FAC3890 - "T" Anchor Fastener	15EX1515L	17	22
15FAC3880 - Anchor Fastener	15EX1515L	17	22
10FAC3750 - Anchor Fastener	10EX1010	17	22
15FAC3865 - End Fastener	15EX1515L	17	22
10FAC3755 - End Fastener	10EX1010	17	22
5/16-18 FBHSCS/Economy T-nut	15EX1515L	15	20
1/4-20 FBHSCS/Economy T-nut	10EX1010	13	18
Hi-Torque T-nut	15EX1515L	13	18

UNIVERSAL FASTENER CHARTS

3/8-16 FRACTIONAL (SAE) SIZES

3/8-16 SOCKET HEAD CAP SCREW (SHCS)			
PART #	DESCRIPTION	FINISH	TOOL
13FA3340	3/8-16 x 3/4 SHCS	BLACK ZINC	5/16 HEX

1/2-13 FRACTIONAL (SAE) SIZES

1/2-13 BUTTON HEAD SOCKET CAP SCREW (BHSCS)			
PART #	DESCRIPTION	FINISH	TOOL
13FA3338	1/2-13 x 3/4 BHSCS	BLACK ZINC	5/16 HEX

10-32 FRACTIONAL (SAE) SIZES

10-32 SOCKET HEAD CAP SCREW (SHCS)			
PART #	DESCRIPTION	FINISH	TOOL
13FA3347	10-32 x 3/8 SHCS	BLACK ZINC	5/32 HEX
13FA3350	10-32 x 1/2 SHCS	BLACK ZINC	5/32 HEX
13FA3351	10-32 x 5/8 SHCS	BLACK ZINC	5/32 HEX
13FA3352	10-32 x 3/4 SHCS	BLACK ZINC	5/32 HEX
13FA3607	10-32 x 3/4 SHCS	STAINLESS	5/32 HEX

10-32 BUTTON HEAD SOCKET CAP SCREW (BHSCS)			
PART #	DESCRIPTION	FINISH	TOOL
13FA3316	10-32 x 3/8 BHSCS	BLACK ZINC	5/32 HEX
13FA3128	10-32 x 1/2 BHSCS	BLACK ZINC	5/32 HEX
13FA3129	10-32 x 5/8 BHSCS	BLACK ZINC	5/32 HEX

10-32 FLAT HEAD SOCKET CAP SCREW (FHSCS)			
PART #	DESCRIPTION	FINISH	TOOL
13FA3117	10-32 x 1/2 FHSCS	BLACK ZINC	5/32 HEX

FRACTIONAL (SAE) SIZES (WASHERS / HEX NUTS)

FLAT WASHERS			
PART #	DESCRIPTION	FINISH	TOOL
13FA3700	5/16" x .062"	BLACK ZINC	N/A
13FA3704	5/16" x .125"	BLACK ZINC	N/A
13FA3609	5/16" x .062"	STAINLESS	N/A
13FA3701	1/4" x .062"	BLACK ZINC	N/A
13FA3712	1/4" x .125"	BLACK ZINC	N/A
13FA3608	1/4" x .062"	STAINLESS	N/A

HEX NUTS			
PART #	DESCRIPTION	FINISH	TOOL
13FA3113	5/16-18	BLACK ZINC	N/A
13FA3112	5/16-18	BLACK ZINC	N/A
13FA3611	1/4-20	STAINLESS	N/A
13FA3610	1/4-20	STAINLESS	N/A



FOR BONDHUS HEX
WRENCHES, SEE PAGE 254

UNIVERSAL FASTENER CHARTS

M8 x 1.25 METRIC SIZES

M8 x 1.25 SOCKET HEAD CAP SCREW (SHCS)			
PART #	DESCRIPTION	FINISH	TOOL
13MFA3649	M8 x 12 SHCS	BRIGHT ZINC	M6 HEX
13MFA3650	M8 x 14 SHCS	BRIGHT ZINC	M5 HEX
13MFA3651	M8 x 16 SHCS	BRIGHT ZINC	M5 HEX
13MFA3609	M8 x 20 SHCS	BRIGHT ZINC	M5 HEX
13MFA3652	M8 x 25 SHCS	BRIGHT ZINC	M5 HEX
13MFA3610	M8 x 30 SHCS	BRIGHT ZINC	M5 HEX
13MFA3653	M8 x 40 SHCS	BRIGHT ZINC	M5 HEX
13MFA3654	M8 x 50 SHCS	BRIGHT ZINC	M5 HEX

M8 x 1.25 BUTTON HEAD SOCKET CAP SCREW (BHSCS)			
PART #	DESCRIPTION	FINISH	TOOL
13MFA3607	M8 x 12 BHSCS	BRIGHT ZINC	M5 HEX
13MFA3655	M8 x 14 BHSCS	BRIGHT ZINC	M5 HEX
13MFA3613	M8 x 16 BHSCS	BRIGHT ZINC	M5 HEX
13MFA3615	M8 x 20 BHSCS	BRIGHT ZINC	M5 HEX
13MFA3608	M8 x 25 BHSCS	BRIGHT ZINC	M5 HEX
13MFA3656	M8 x 40 BHSCS	BRIGHT ZINC	M5 HEX
13MFA3657	M8 x 50 BHSCS	BRIGHT ZINC	M5 HEX

M8 x 1.25 CARRIAGE BOLT			
PART #	DESCRIPTION	FINISH	TOOL
13MFA3614	M8 x 25 C-BOLT	BRIGHT ZINC	N/A

M6 x 1.0 METRIC SIZES

M6 x 1.0 SOCKET HEAD CAP SCREW (SHCS)			
PART #	DESCRIPTION	FINISH	TOOL
13MFA3600	M6 x 12 SHCS	BRIGHT ZINC	M5 HEX
13MFA3602	M6 x 16 SHCS	BRIGHT ZINC	M5 HEX
13MFA3618	M6 x 20 SHCS	BRIGHT ZINC	M5 HEX
13MFA3606	M6 x 22 SHCS	BRIGHT ZINC	M5 HEX
13MFA3646	M6 x 25 SHCS	BRIGHT ZINC	M5 HEX

M6 x 1.0 CARRIAGE BOLT			
PART #	DESCRIPTION	FINISH	TOOL
13MFA3611	M6 x 20 C-BOLT	BRIGHT ZINC	N/A

M6 x 1.0 BUTTON HEAD SOCKET CAP SCREW (BHSCS)			
PART #	DESCRIPTION	FINISH	TOOL
13MFA3621	M6 x 10 BHSCS	BRIGHT ZINC	M5 HEX
13MFA3605	M6 x 12 BHSCS	BRIGHT ZINC	M5 HEX
13MFA3624	M6 x 14 BHSCS	BRIGHT ZINC	M5 HEX
13MFA3647	M6 x 16 BHSCS	BRIGHT ZINC	M5 HEX
13MFA3612	M6 x 20 BHSCS	BRIGHT ZINC	M5 HEX
13MFA3648	M6 x 25 BHSCS	BRIGHT ZINC	M5 HEX



FOR BONDHUS HEX
WRENCHES, SEE PAGE 254

M5 x .8 METRIC SIZES

M5 x .8 SOCKET HEAD CAP SCREW (SHCS)			
PART #	DESCRIPTION	FINISH	TOOL
13MFA3640	M5 x 8 SHCS	BRIGHT ZINC	M5 HEX
13MFA3641	M5 x 12 SHCS	BRIGHT ZINC	M5 HEX
13MFA3642	M5 x 16 SHCS	BRIGHT ZINC	M5 HEX
13MFA3619	M5 x 20 SHCS	BRIGHT ZINC	M5 HEX

M5 x .8 BUTTON HEAD SOCKET CAP SCREW (BHSCS)			
PART #	DESCRIPTION	FINISH	TOOL
13MFA3643	M5 x 8 BHSCS	BRIGHT ZINC	M5 HEX
13MFA3644	M5 x 12 BHSCS	BRIGHT ZINC	M5 HEX
13MFA3645	M5 x 16 BHSCS	BRIGHT ZINC	M5 HEX

METRIC SIZES (WASHERS / HEX NUTS)

FLAT WASHERS			
PART #	DESCRIPTION	FINISH	TOOL
13MFA3622	M8 x 1.58	BRIGHT ZINC	N/A
13MFA3620	M6 x 1.58	BRIGHT ZINC	N/A

HEX NUTS			
PART #	DESCRIPTION	FINISH	TOOL
13MFA3617	M8 x 1.25	BRIGHT ZINC	N/A
13MFA3616	M6 x 1.0	BRIGHT ZINC	N/A

15 SERIES "T" ANCHOR FASTENERS

(for use with "SM" extrusions)

15FAC3890

15 SERIES "T" ANCHOR FASTENER ASSEMBLY

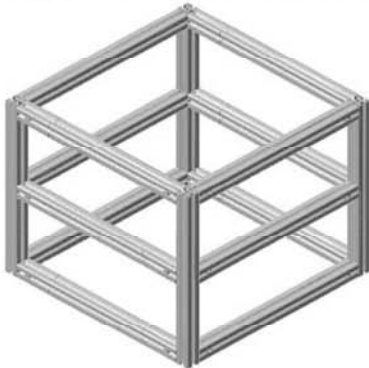


BENEFITS:

- **STRONGEST** of all connectors
- Tolerance on counterbores are +/- .015"
- Infinite positioning when using anchors
- Clean, flush look!
- Made of steel
- Corrosion resistant finish
- FAST assembly
- Panel notch NOT required!

See page 162 for machining service

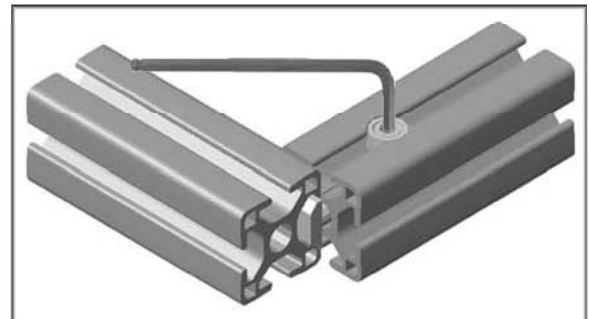
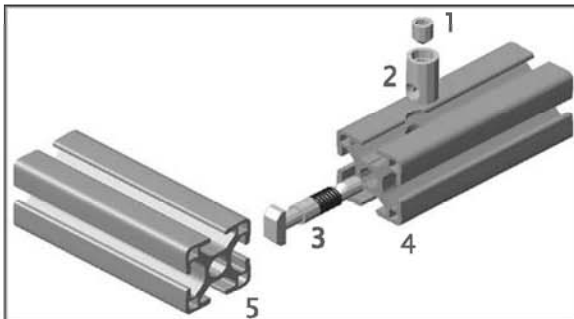
For proper torque use a 3/16" hex wrench (13TL1301 on page 254)



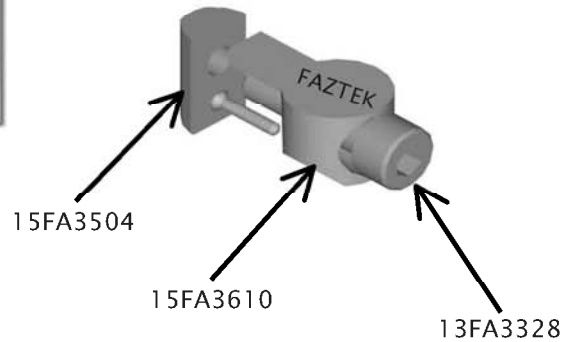
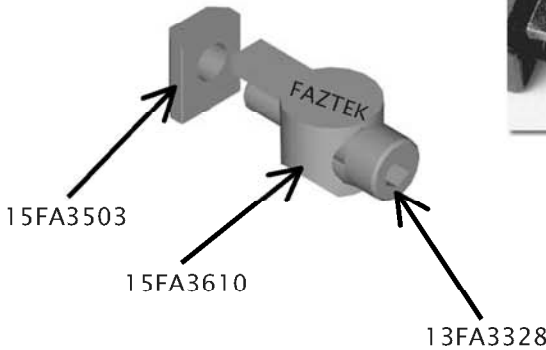
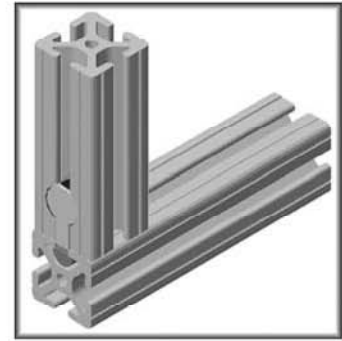
Assembly Instructions:

1. Drop barrel into counterbore (Item 2)
2. Insert "T" bar (Item 3) w/ spring into extrusion hole (Item 4) and hole in barrel (Item 2)
3. Insert set screw (Item 1) and begin tightening until slight tension is on the "T" bar (Item 3)
4. Place head of the "T" anchor into the mating extrusion (Item 5)
5. Once the extrusion is in place, tighten the set screw (Item 1) down

For proper tightening force, torque fastener to 17-22 ft-lbs



15 SERIES ANCHOR FASTENERS



COMBO PART # 15FAC3880

ANCHOR FASTENER W/ STANDARD T-NUT	
15FA3503	5/16-18 STANDARD T-NUT
13FA3328	5/16-18 x 1-1/4 SHCS
15FA3610	15 SERIES ANCHOR BODY

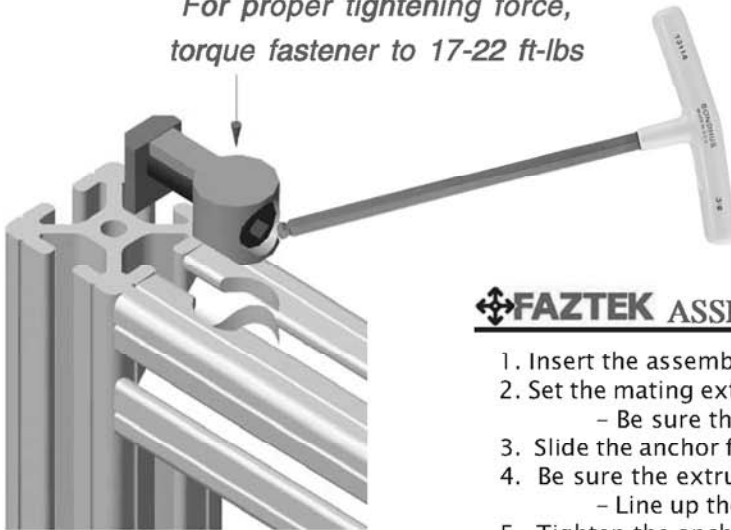
* For 15 series counterbore service, see page 163

COMBO PART # 15FAC3888

ANCHOR FASTENER W/ DROP-IN T-NUT	
15FA3504	5/16-18 DROP-IN T-NUT
13FA3328	5/16-18 x 1-1/4 SHCS
15FA3610	15 SERIES ANCHOR BODY

* For 15 series counterbore service, see page 163

*For proper tightening force,
torque fastener to 17-22 ft-lbs*

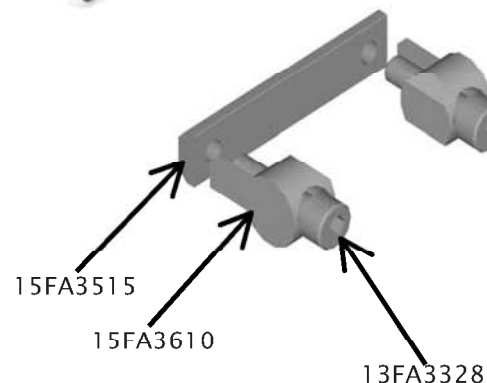
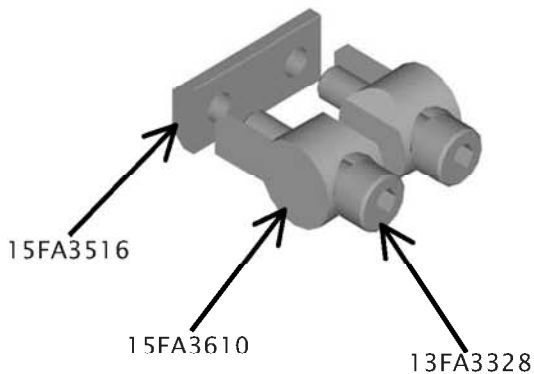
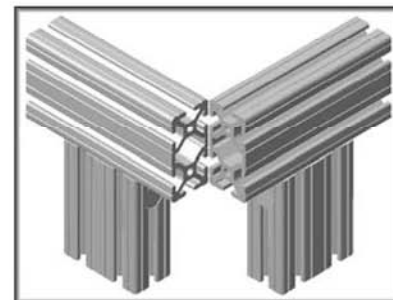
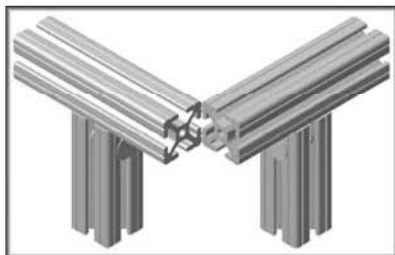


- EASY POSITIONING
- **MOST** COST EFFECTIVE FASTENER
- INFINITE ADJUSTABILITY
- MADE OF ZINC DIE CASTING
- CORROSION RESISTANT FINISH
- FAST ASSEMBLY

FAZTEK ASSEMBLY TIP

1. Insert the assembled anchor fastener into the T-slot.
2. Set the mating extrusion 90° to the joining slot.
 - Be sure the counterbore is oriented properly -
3. Slide the anchor fastener into the counterbore of the mating extrusion.
4. Be sure the extrusions are squared up.
 - Line up the grooves in the extrusions -
5. Tighten the anchor fastener with a 1/4" "T" Handle Ball End Hex Wrench.
 - Found on page 254 -

15 SERIES DOUBLE ANCHOR FASTENERS



COMBO PART # 15FAC3882

SHORT DOUBLE ANCHOR FASTENER W/ STANDARD T-NUTS (1.5" EXTRUSION)	
15FA3516	5/16-18 STANDARD T-NUT (DBL)
13FA3328	5/16-18 x 1-1/4 SHCS
15FA3610	15 SERIES ANCHOR BODY

* For 15 series counterbore service, see page 163

COMBO PART # 15FAC3884

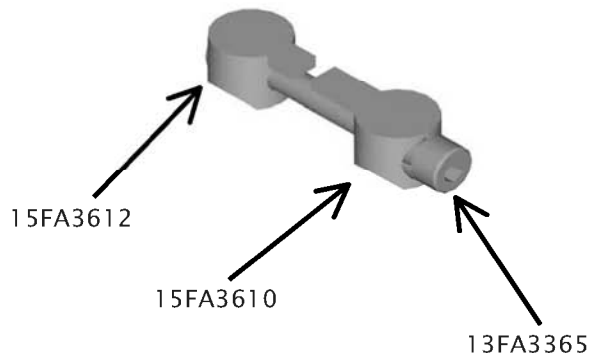
LONG DOUBLE ANCHOR FASTENER W/ STANDARD T-NUTS (3.0" EXTRUSION)	
15FA3516	5/16-18 STANDARD T-NUT (DBL)
13FA3328	5/16-18 x 1-1/4 SHCS
15FA3610	15 SERIES ANCHOR BODY

* For 15 series counterbore service, see page 163

15 SERIES BUTT FASTENERS



- Allows you to draw 2 extrusions together tight, creating virtually one long extrusion
- Strong connector
- Uses same counterbore service as the anchor fastener

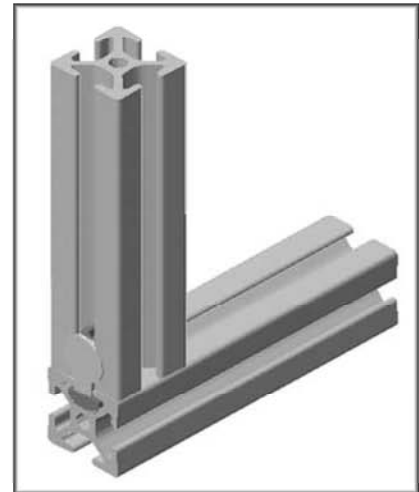
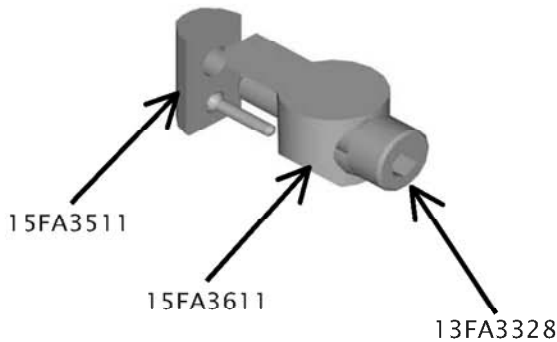


COMBO PART # 15FAC3886

BUTT-FASTENER ASSEMBLY	
15FA3612	15 SERIES ANCHOR CAM (MOD)
13FA3365	5/16-18 x 2.0 SHCS
15FA3610	15 SERIES ANCHOR CAM

* For 15 series counterbore service, see page 163

15 SERIES BANJO FASTENERS



For proper tightening force, torque fastener to 17-22 ft-lbs

COMBO PART # 15FAC3892

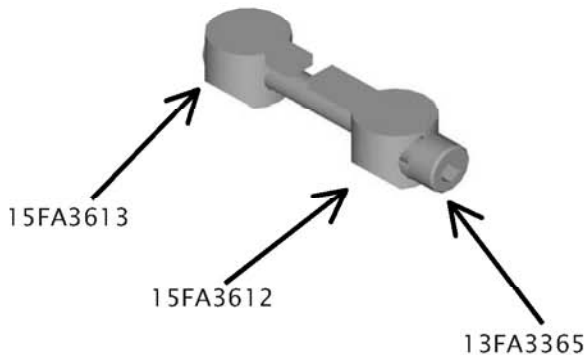
ANCHOR FASTENER W/DROP-IN T-NUT	
15FA3511	5/16-18 DROP-IN T-NUT
13FA3328	5/16-18 x 1-1/4 SHCS
15FA3612	15 SERIES BANJO BODY



* For 15 series counterbore service, see page 163

Fasteners

15 SERIES BUTT FASTENERS



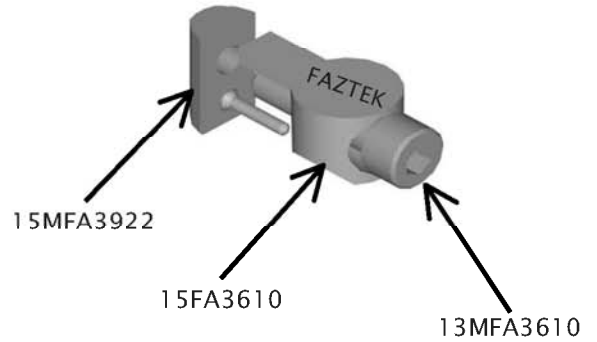
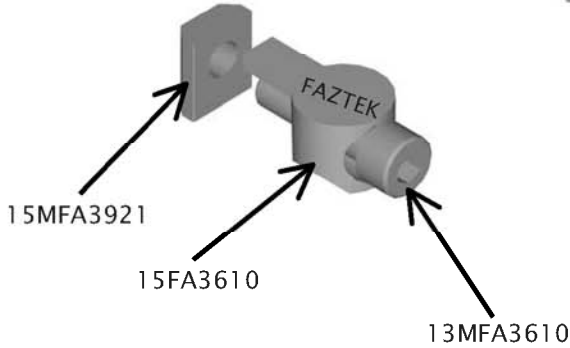
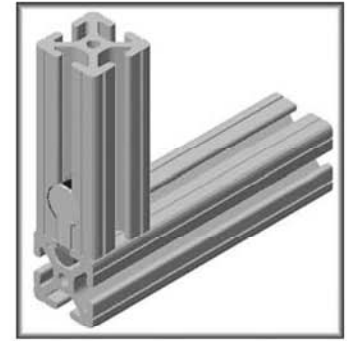
COMBO PART # 15FAC3896

BUTT-FASTENER ASSEMBLY	
15FA3613	15 SERIES BANJO CAM (MOD)
13FA3365	5/16-18 x 2.0 SHCS
15FA3612	15 SERIES BANJO CAM

- Allows you to draw 2 extrusions together tight, creating virtually one long extrusion
- Strong connector
- Uses same counterbore service as the anchor fastener

* For 15 series counterbore service, see page 163

15 SERIES METRIC ANCHOR FASTENERS



COMBO PART # 15MFAC3720

ANCHOR FASTENER W/ STANDARD T-NUT	
15MFA3921	M8 x 1.25 STANDARD T-NUT
13MFA3610	M8 x 30mm SHCS
15FA3610	15 SERIES ANCHOR BODY

* For 15 series counterbore service, see page 163

COMBO PART # 15MFAC3728

ANCHOR FASTENER W/ DROP-IN T-NUT	
15MFA3922	M8 x 1.25 DROP-IN T-NUT
13MFA3610	M8 x 30MM SHCS
15FA3610	15 SERIES ANCHOR BODY

* For 15 series counterbore service, see page 163

15 SERIES T-SLOT CONNECTOR

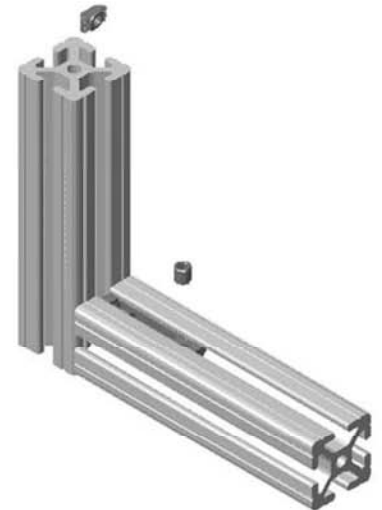
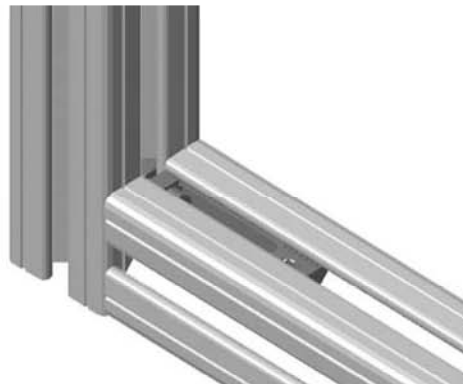
15FAC3894

15 SERIES T-SLOT CONNECTOR ASSEMBLY

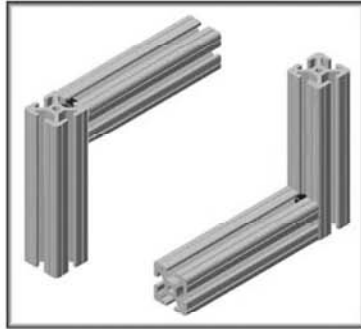


BENEFITS:

- *NO machining required*
- *Infinite positioning when using connector*
- *Strong*
- *Clean, flush look!*

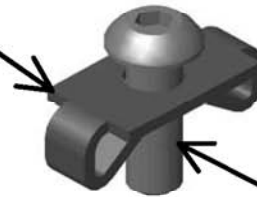
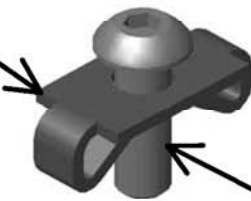


15 SERIES END FASTENERS FRACTIONAL & METRIC



15FA3615
(BLACK ZINC)

15FA3615
(BLACK ZINC)



13MFA3608

13MFA3608

COMBO PART # 15FAC3865

COMBO PART # 15MFAC3710

FRACTIONAL END FASTENER ASSEMBLY	
15FA3615	15 SERIES END FASTENER CLIP
13FA3324	5/16-18 x 1 BHSCS

METRIC END FASTENER ASSEMBLY	
15FA3615	15 SERIES END FASTENER CLIP
13MFA3608	M8 x 25 BHSCS

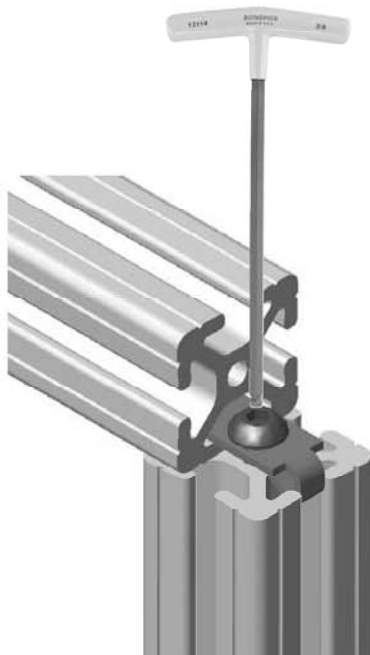
* For 15 series tapping service, see page 161

* For 15 series tapping service, see page 161

Fasteners

MACHINING FOR END FASTENERS

- FOR TAPPING SERVICE SEE PAGE 161
- FOR ACCESS HOLE DRILLING SERVICE SEE PAGE 165



**No Welding or
Painting!**

- HIDDEN CONNECTION
- GOOD FOR TIGHT SPACING
- HOLDS EXTRUSION AT 90°

*For proper tightening force,
torque fastener to 17-22 ft-lbs*

FAZTEK ASSEMBLY TIP

1. Set the clip on the end of the extrusion over the tapped hole.
2. Place the bolt through the clip and thread into the tapped hole.
3. Slide the bottom T-slot onto the clip of the mating extrusion.
4. Line up the access hole up with the head of the bolt.
5. Tighten the end fastener with a 3/16" "T" Handle Ball End Hex Wrench

- Found on page 254 -