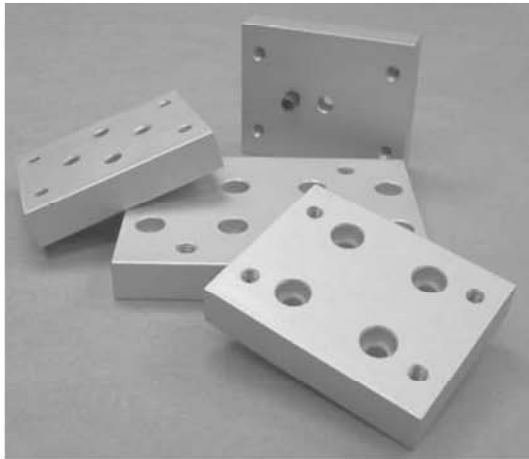


# SECTION 3

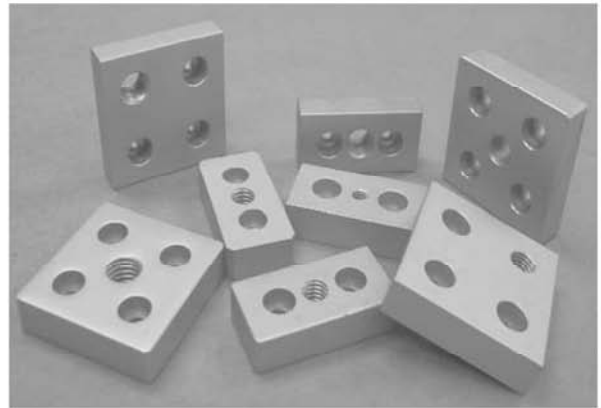
## 15 SERIES

### BASE PLATES / FLOOR TO FRAME

**BASE PLATES FOR  
CASTERS**

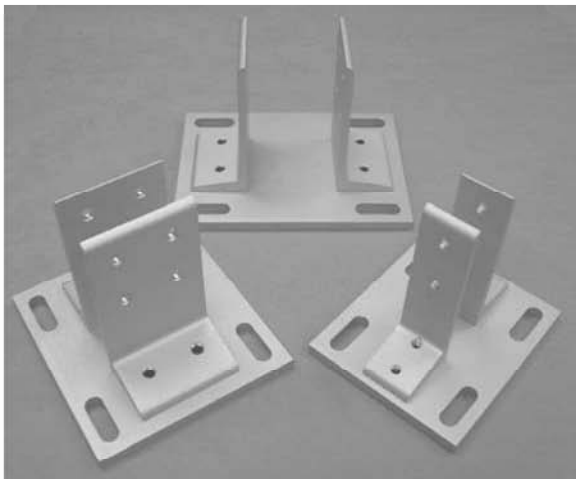


**BASE PLATES FOR  
LEVELING FEET**



Flr.-Frame

**DELUXE FLOOR MOUNT  
BASE PLATES**

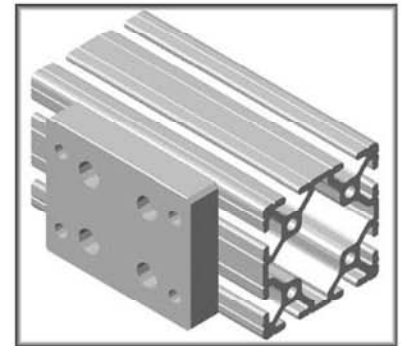
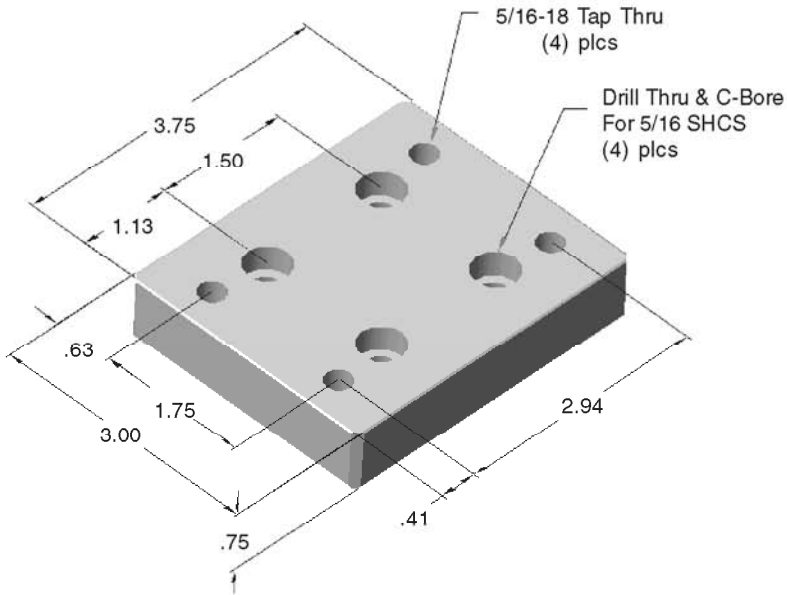


**FLOOR MOUNT FEET**

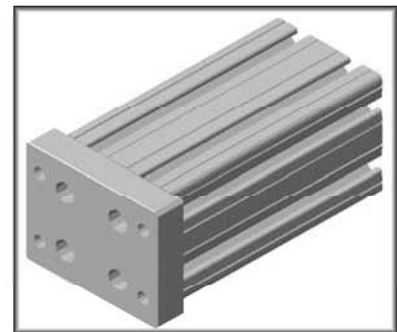


# 15BP2500

15 SERIES FLANGE MOUNT CASTER BASE PLATE



For T-Slot Mounting



For Extrusion End Mounting

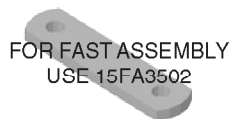
- Bolts on to end of extrusion or to T-slot
- For mounting casters see pages 228-234
- For tapping service see page 161

RECOMMENDED HARDWARE FOR MOUNTING TO EXTRUSION T-SLOT

Qty	Description	Part Number
4	5/16-18 x 7/8 SHCS	13FA3327
4	5/16-18 ECONOMY T-NUT	15FA3501

RECOMMENDED HARDWARE FOR MOUNTING TO EXTRUSION END

Qty	Description	Part Number
4	5/16-18 x 7/8 SHCS	13FA3327



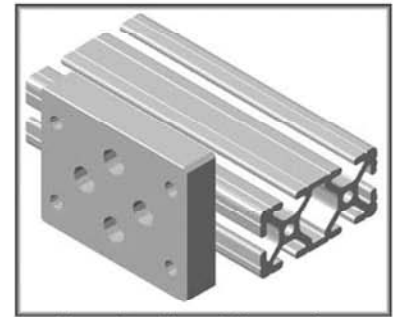
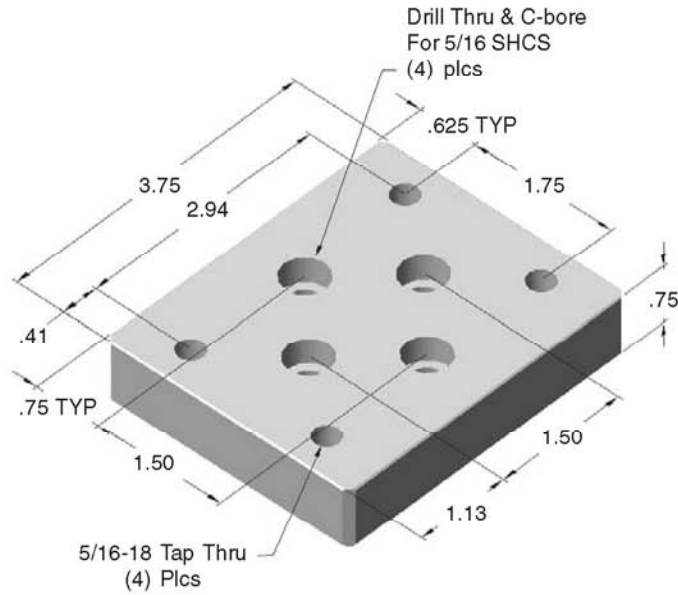
RECOMMENDED CASTERS FOR MOUNTING TO BASE PLATES

Pg #	Description	Part No.
229	4" SWIVEL CASTER W/ BRAKE	13CA8102
229	4" RIGID CASTER	13CA8103
229	5" SWIVEL CASTER W/ BRAKE	13CA8108
229	5" RIGID CASTER	13CA8110
229	3.5" SWIVEL CASTER W/ BRAKE	13CA8113
229	3.5" RIGID CASTER	13CA8114
229	5" RIGID CASTER	13CA8115
229	5" SWIVEL CASTER W/ BRAKE	13CA8116

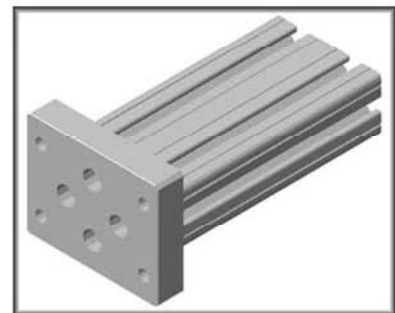
\* SEE CASTER SECTION FOR RECOMMENDED HARDWARE TO MOUNT TO BASE PLATES

# 15BP2501

15 SERIES FLANGE MOUNT CASTER BASE PLATE



For T-Slot Mounting



For Extrusion End Mounting

- Bolts on to end of extrusion or T-slot
- For mounting casters see page 228-234
- For tapping service see page 161

RECOMMENDED HARDWARE FOR MOUNTING TO EXTRUSION T-SLOT

Qty	Description	Part Number
4	5/16-18 x 7/8 SHCS	13FA3327
4	5/16-18 ECONOMY T-NUT	15FA3501

RECOMMENDED HARDWARE FOR MOUNTING TO EXTRUSION END

Qty	Description	Part Number
4	5/16-18 x 7/8 SHCS	13FA3327



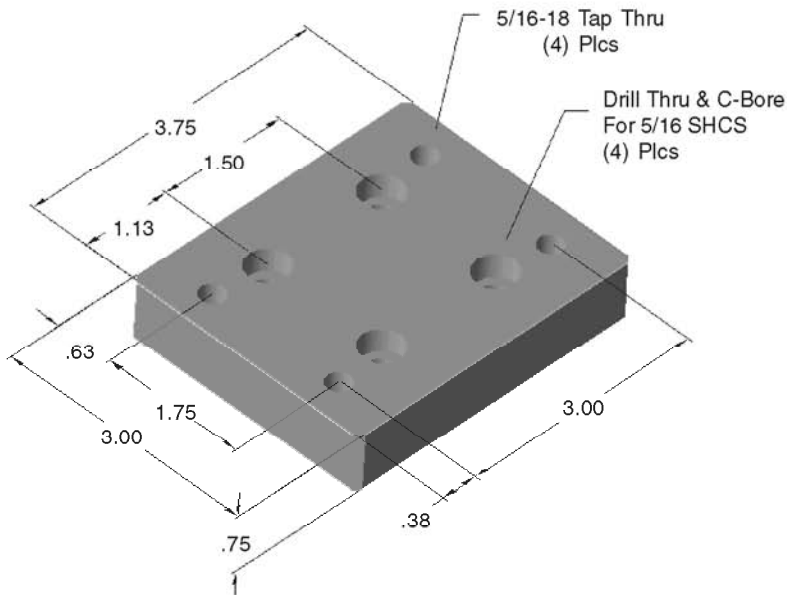
RECOMMENDED CASTERS FOR MOUNTING TO BASE PLATES

Pg #	Description	Part No.
229	4" SWIVEL CASTER W/ BRAKE	13CA8102
229	4" RIGID CASTER	13CA8103
229	5" SWIVEL CASTER W/ BRAKE	13CA8108
229	5" RIGID CASTER	13CA8110
229	3.5" SWIVEL CASTER W/ BRAKE	13CA8113
229	3.5" RIGID CASTER	13CA8114
229	5" RIGID CASTER	13CA8115
229	5" SWIVEL CASTER W/ BRAKE	13CA8116

\* SEE CASTER SECTION FOR RECOMMENDED HARDWARE TO MOUNT TO BASE PLATES

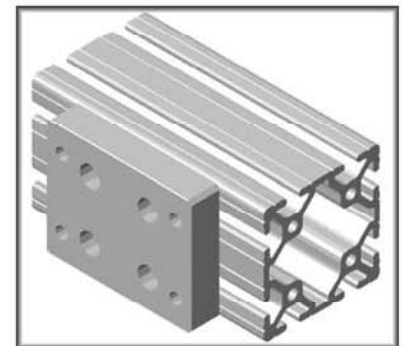
# 15BP2521

15 SERIES FLANGE MOUNT CASTER BASE PLATE



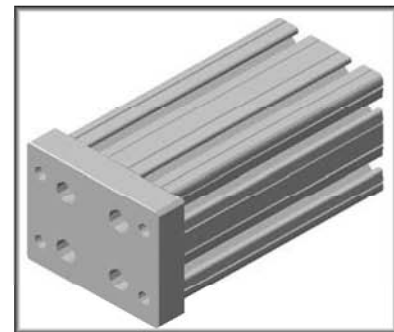
Material:  
Steel w/ Black Oxide Finish

- Bolts on to end of extrusion or to T-slot
- For mounting casters see pages 228-234
- For tapping service see page 161

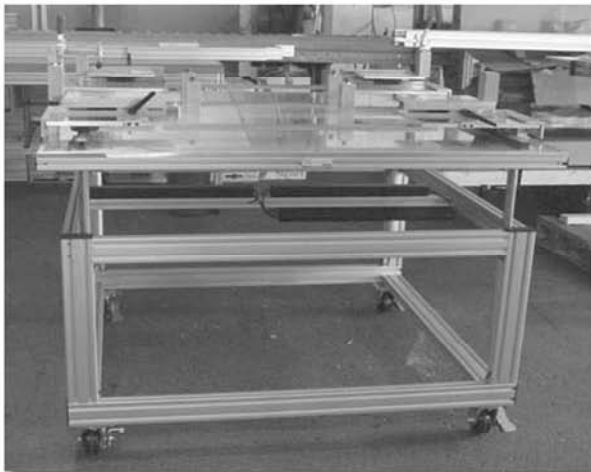


For T-Slot Mounting

**HARDWARE INCLUDED!**



For Extrusion End Mounting



FIXTURE CART

RECOMMENDED CASTERS FOR MOUNTING TO BASE PLATES

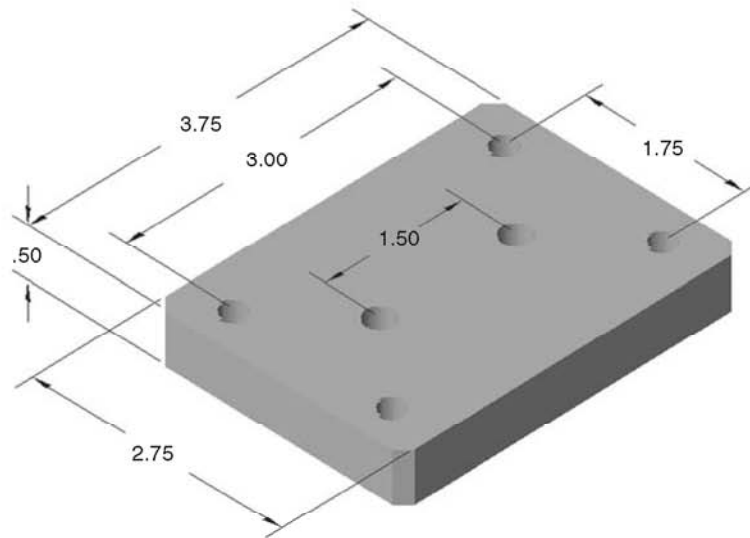
Pg #	Description	Part No.
229	4" SWIVEL CASTER W/ BRAKE	13CA8102
229	4" RIGID CASTER	13CA8103
229	5" SWIVEL CASTER W/ BRAKE	13CA8108
229	5" RIGID CASTER	13CA8110
229	3.5" SWIVEL CASTER W/ BRAKE	13CA8113
229	3.5" RIGID CASTER	13CA8114
229	5" RIGID CASTER	13CA8115
229	5" SWIVEL CASTER W/ BRAKE	13CA8116

\* SEE CASTER SECTION FOR RECOMMENDED HARDWARE TO MOUNT TO BASE PLATES



# 15BP2523

15 SERIES FLANGE MOUNT CASTER BASE PLATE



Flr.-Frame

- Bolts on to end of extrusion or T-slot
- For mounting casters see page 228-234
- For tapping service see page 161

**HARDWARE INCLUDED!**



**MATERIAL HANDLING CART**

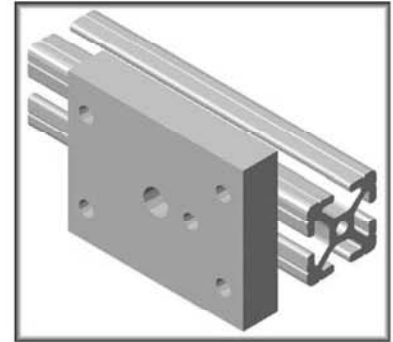
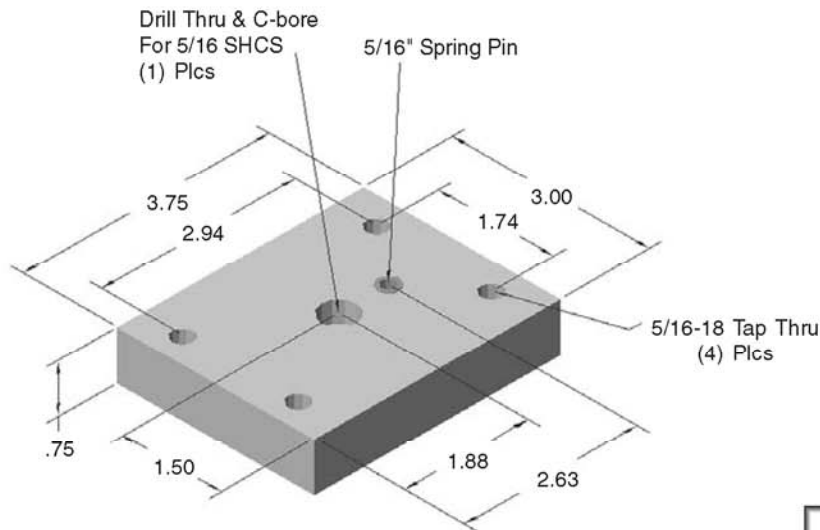
RECOMMENDED CASTERS FOR MOUNTING TO BASE PLATES

Pg #	Description	Part No.
229	4" SWIVEL CASTER W/ BRAKE	13CA8102
229	4" RIGID CASTER	13CA8103
229	5" SWIVEL CASTER W/ BRAKE	13CA8108
229	5" RIGID CASTER	13CA8110
229	3.5" SWIVEL CASTER W/ BRAKE	13CA8113
229	3.5" RIGID CASTER	13CA8114
229	5" RIGID CASTER	13CA8115
229	5" SWIVEL CASTER W/ BRAKE	13CA8116

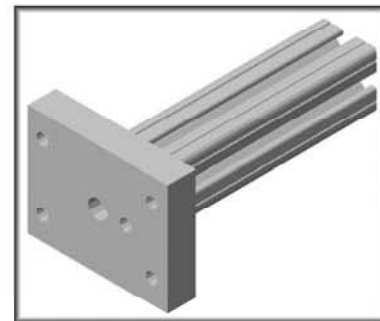
\* SEE CASTER SECTION FOR RECOMMENDED HARDWARE TO MOUNT TO BASE PLATES

# 15BP2503

15 SERIES FLANGE MOUNT CASTER BASE PLATE



For T-Slot Mounting



For Extrusion End Mounting

- Bolts on end of extrusion or T-slot
- For mounting casters see pages 228-234
- For tapping service see page 161
- Includes 5/16" spring pin for proper alignment

RECOMMENDED HARDWARE TO MOUNT TO EXTRUSION T-SLOT

Qty	Description	Part Number
1	5/16-18 x 7/8 SHCS	13FA3327
1	5/16-18 ECONOMY T-NUT	15FA3501

RECOMMENDED HARDWARE TO MOUNT TO EXTRUSION END

Qty	Description	Part Number
1	5/16-18 x 7/8 SHCS	13FA3327

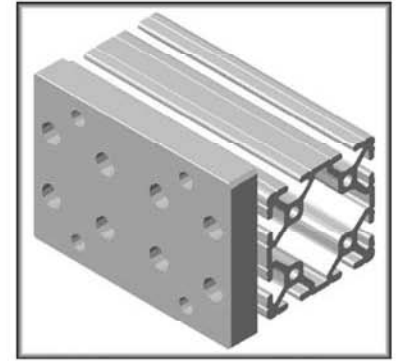
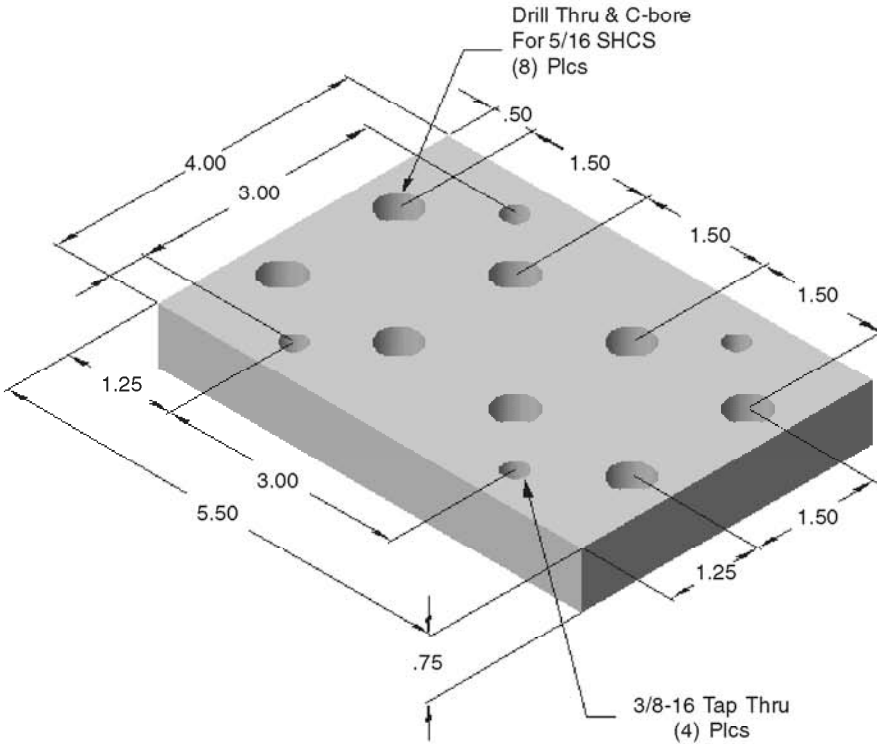
RECOMMENDED CASTERS FOR MOUNTING TO BASE PLATES

Pg #	Description	Part No.
229	4" SWIVEL CASTER W/ BRAKE	13CA8102
229	4" RIGID CASTER	13CA8103
229	5" SWIVEL CASTER W/ BRAKE	13CA8108
229	5" RIGID CASTER	13CA8110
229	3.5" SWIVEL CASTER W/ BRAKE	13CA8113
229	3.5" RIGID CASTER	13CA8114
229	5" RIGID CASTER	13CA8115
229	5" SWIVEL CASTER W/ BRAKE	13CA8116

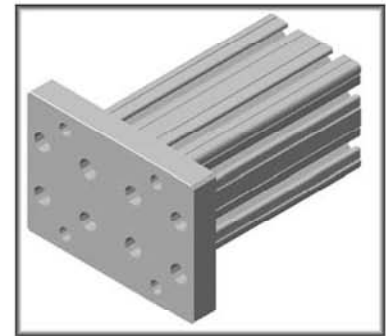
\* SEE CASTER SECTION FOR RECOMMENDED HARDWARE TO MOUNT TO BASE PLATES

# 15BP2502

15 SERIES HEAVY DUTY CASTER BASE PLATE



For T-Slot Mounting



For Extrusion End Mounting

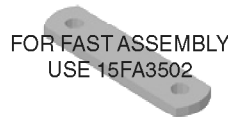
- Bolts on to end of extrusion or T-Slot
- For mounting casters see pages 228-234
- For tapping service see page 82

RECOMMENDED HARDWARE  
TO MOUNT TO EXTRUSION T-SLOT

Qty	Description	Part Number
8	5/16-18 x 7/8 SHCS	13FA3327
8	5/16-18 ECONOMY T-NUT	15FA3501

RECOMMENDED HARDWARE  
TO MOUNT TO EXTRUSION END

Qty	Description	Part Number
8	5/16-18 x 7/8 SHCS	13FA3327



RECOMMENDED CASTERS FOR  
MOUNTING TO BASE PLATES

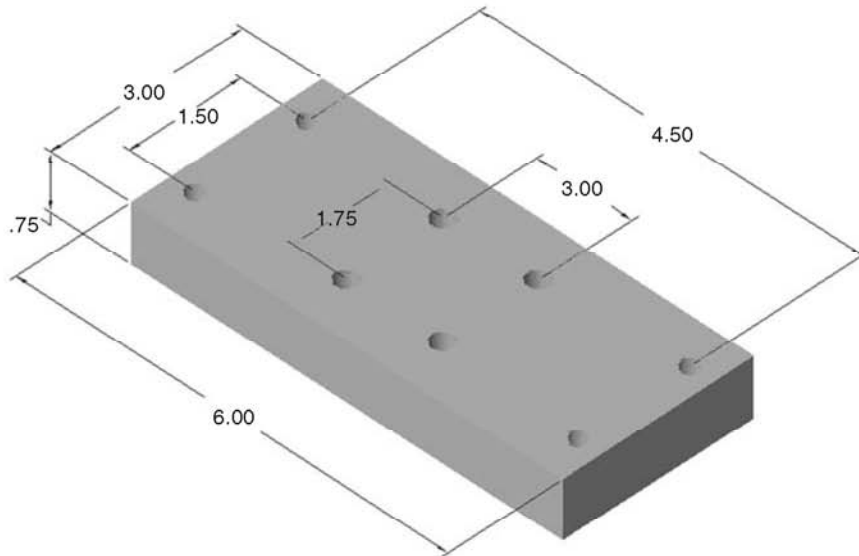
Pg #	Description	Part No.
230	5" SWIVEL CASTER W/ BRAKE	13CA8104
230	5" SWIVEL CASTER	13CA8105
230	5" RIGID CASTER	13CA8106
230	5" RIGID CASTER	13CA8107

\* SEE CASTER SECTION FOR RECOMMENDED  
HARDWARE TO MOUNT TO BASE PLATES

Flr.-Frame

# 15BP2522

15 SERIES FLANGE MOUNT CASTER BASE PLATE



**HARDWARE INCLUDED!**



MEDIUM DUTY SHOP CART

- Bolts on end of extrusion or T-slot
- For mounting casters see pages 228-234
- For tapping service see page 161

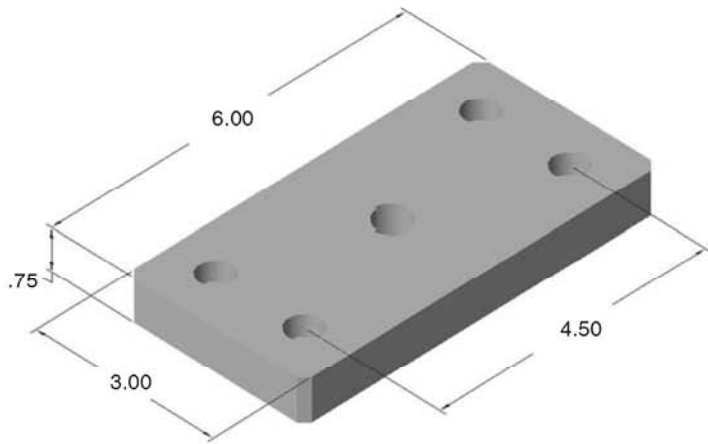
RECOMMENDED CASTERS FOR MOUNTING TO BASE PLATES

Pg #	Description	Part No.
229	4" SWIVEL CASTER W/ BRAKE	13CA8102
229	4" RIGID CASTER	13CA8103
229	5" SWIVEL CASTER W/ BRAKE	13CA8108
229	5" RIGID CASTER	13CA8110
229	3.5" SWIVEL CASTER W/ BRAKE	13CA8113
229	3.5" RIGID CASTER	13CA8114
229	5" RIGID CASTER	13CA8115
229	5" SWIVEL CASTER W/ BRAKE	13CA8116

\* SEE CASTER SECTION FOR RECOMMENDED HARDWARE TO MOUNT TO BASE PLATES



15EX3060, 15QE3060 BASE PLATE



- Bolts on to end of extrusion or T-slot
- For stem casters see page 228
- For leveling feet see page 234-235
- For tapping service see page 161

Material:  
Steel w/ Black Oxide Finish



**HARDWARE INCLUDED!**

Part No.	'A' Tap Thru
15BP2516	1/2-13
15BP2512	5/8-11

Flr.-Frame

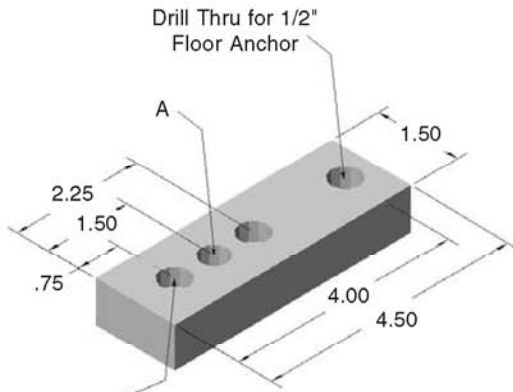


**LARGE DUTY SHOP CART**

**MATERIAL CRADLE**



**15EX1530, L, 15QE1530, L  
ANCHORING BASE PLATE**



Great for anchoring your frame to the floor!



Drill Thru & C-bore for 5/16" SHCS (2) Plcs

Part No.	'A' Tap Thru
15BP2550	3/8-16
15BP2551	1/2-13

- Bolts on to end of extrusion or T-slot
- For leveling feet see page 234-235
- For tapping service see page 161

RECOMMENDED HARDWARE FOR MOUNTING TO EXTRUSION T-SLOT

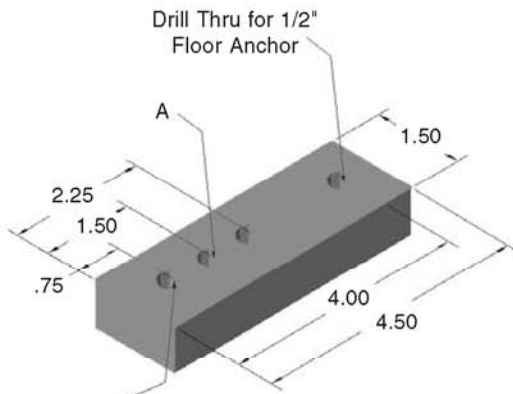
Qty	Description	Part Number
2	5/16-18 x 7/8 SHCS	13FA3327
2	5/16-18 ECONOMY T-NUT	15FA3501

Material:  
Aluminum w/ Clear Anodize

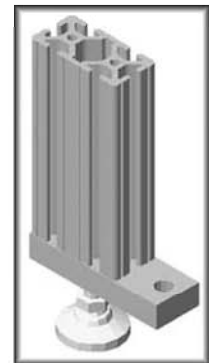
RECOMMENDED HARDWARE FOR MOUNTING TO EXTRUSION END

Qty	Description	Part Number
2	5/16-18 x 7/8 SHCS	13FA3327

**15EX1530, L, 15QE1530, L  
ANCHORING BASE PLATE**



Great for anchoring your frame to the floor!



Drill Thru & C-bore for 5/16" SHCS (2) Plcs

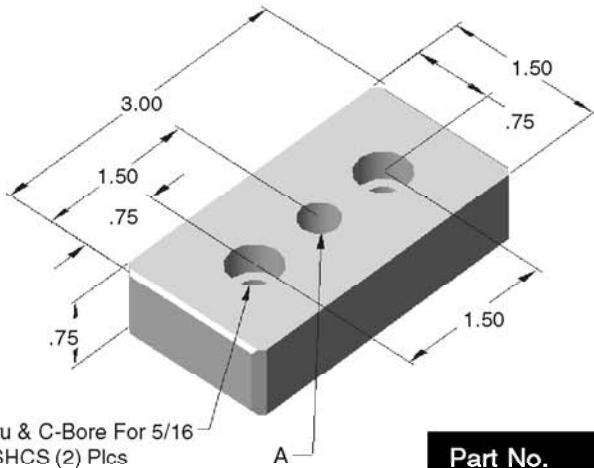
**HARDWARE INCLUDED!**

Part No.	'A' Tap Thru
15BP2517	3/8-16
15BP2518	1/2-13

- Bolts on to end of extrusion or T-slot
- For leveling feet see page 234-235
- For tapping service see page 161

Material:  
Steel w/ Black Oxide Finish

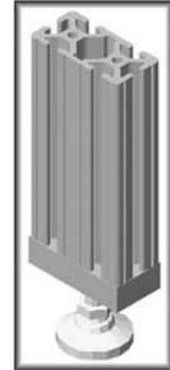
15EX1530, L , 15QE1530, L  
BASE PLATE



Drill Thru & C-Bore For 5/16 SHCS (2) Plcs

A

Part No.	'A' Tap Thru
15BP2561	3/8-16
15BP2562	7/16-14
15BP2580	1/2-13
15BP2564	3/4-10



- Bolts on to end of extrusion or T-slot
- For stem casters see page 228
- For leveling feet see page 234-235
- For tapping service see page 161

RECOMMENDED HARDWARE  
TO MOUNT TO EXTRUSION T-SLOT

Qty	Description	Part Number
2	5/16-18 x 7/8 SHCS	13FA3327
2	5/16-18 ECONOMY T-NUT	15FA3501

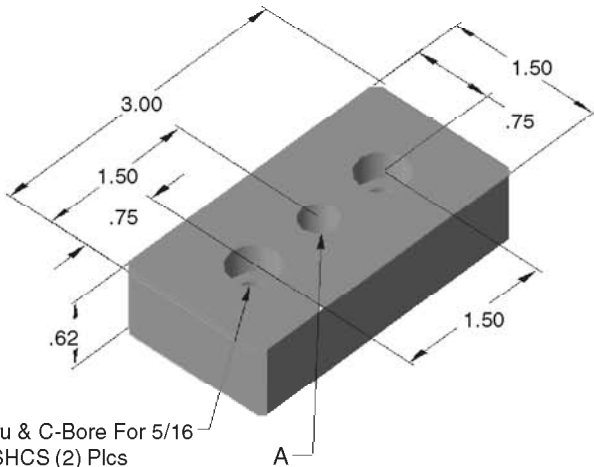
Material:  
Aluminum w/ Clear Anodize

RECOMMENDED HARDWARE  
TO MOUNT TO EXTRUSION END

Qty	Description	Part Number
2	5/16-18 x 7/8 SHCS	13FA3327

Flr.-Frame

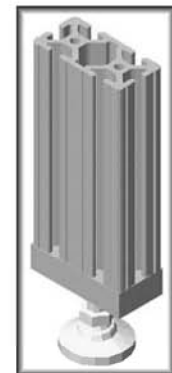
15EX1530, L , 15QE1530, L  
BASE PLATE



Drill Thru & C-Bore For 5/16 SHCS (2) Plcs

A

Part No.	'A' Tap Thru
15BP2513	3/8-16
15BP2514	1/2-13
15BP2508	5/8-11
15BP2510	3/4-10



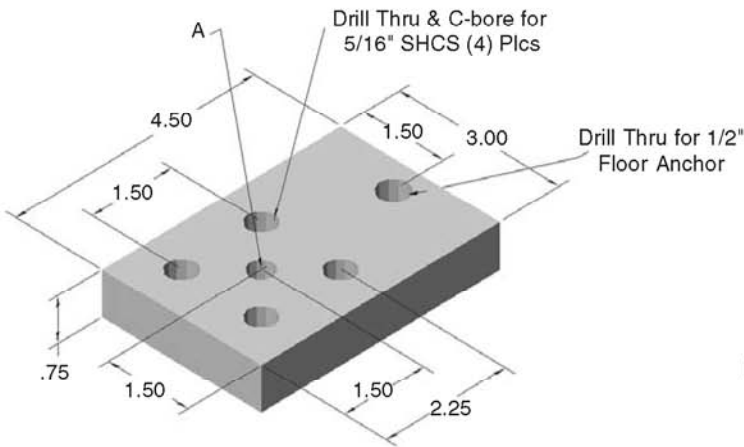
- Bolts on to end of extrusion or T-slot
- For stem casters see page 228
- For leveling feet see page 234-235
- For tapping service see page 161

**HARDWARE INCLUDED!**



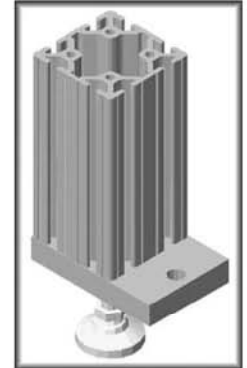
Material:  
Steel w/ Black Oxide Finish

**15EX3030, 15QE3030, L  
ANCHORING BASE PLATE**



Great for anchoring your frame to the floor!

See page xx for lag bolts



FOR FAST ASSEMBLY  
USE 15FA3502

Part No.	'A' Tap Thru
15BP2584	3/8-16
15BP2552	1/2-13

- Bolts on to end of extrusion or T-slot
- For leveling feet see page 234-235
- For tapping service see page 161

RECOMMENDED HARDWARE FOR MOUNTING TO EXTRUSION T SLOT

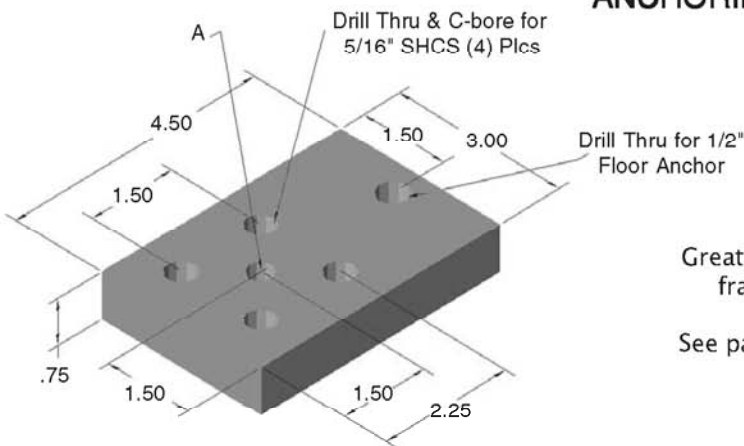
Qty	Description	Part Number
4	5/16-18 x 7/8 SHCS	13FA3327
4	5/16-18 ECONOMY T-NUT	15FA3501

Material:  
Aluminum w/ Clear Anodize

RECOMMENDED HARDWARE FOR MOUNTING TO EXTRUSION END

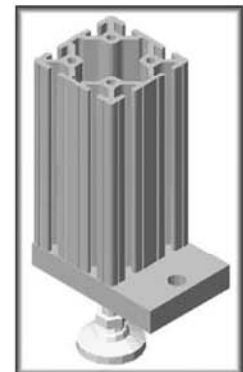
Qty	Description	Part Number
4	5/16-18 x 7/8 SHCS	13FA3327

**15EX3030, 15QE3030, L  
ANCHORING BASE PLATE**



Great for anchoring your frame to the floor!

See page xx for lag bolts



Part No.	'A' Tap Thru
15BP2519	1/2-13

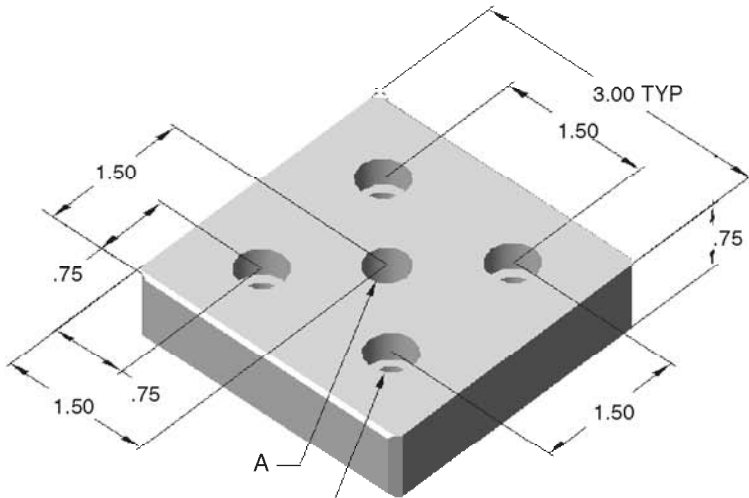
- Bolts on to end of extrusion or T-slot
- For leveling feet see page 234-235
- For tapping service see page 161

**HARDWARE INCLUDED!**

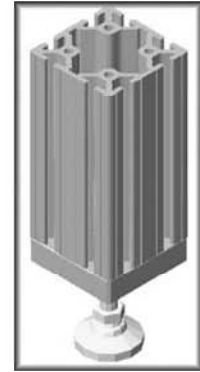


Material:  
Steel w/ Black Oxide Finish

15EX3030, 15QE3030, L  
BASE PLATE



Drill Thru & C-Bore For 5/16 SHCS (4) Plcs



- Bolts on to end of extrusion or T-Slot
- For stem casters see page 228
- For leveling feet see page 234-235
- For tapping service see page 161

Part No.	'A' Tap Thru
15BP2585	3/8-16
15BP2563	7/16-14
15BP2583	1/2-13
15BP2587	3/4-10

Material:  
Aluminum w/ Clear Anodize

RECOMMENDED HARDWARE FOR MOUNTING TO EXTRUSION T-SLOT

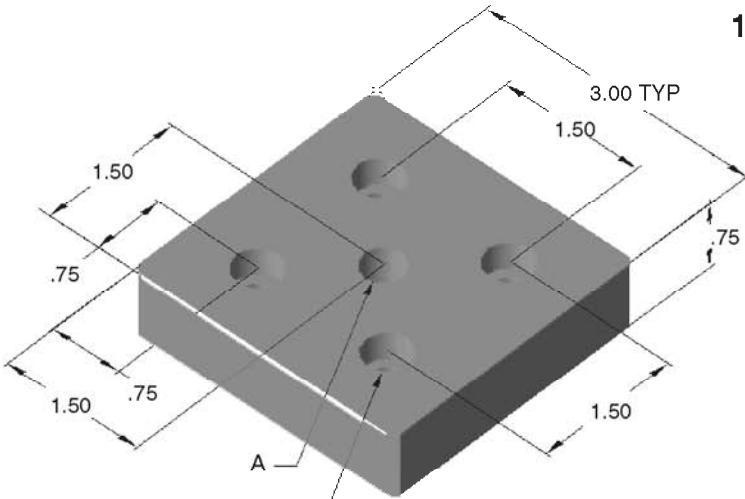
Qty	Description	Part Number
4	5/16-18 x 7/8 SHCS	13FA3327
4	5/16-18 ECONOMY T-NUT	15FA3501

RECOMMENDED HARDWARE FOR MOUNTING TO EXTRUSION END

Qty	Description	Part Number
4	5/16-18 x 7/8 SHCS	13FA3327

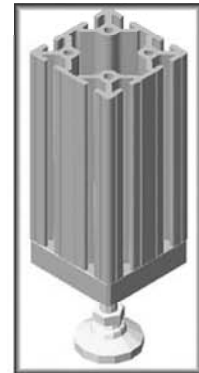
Flr.-Frame

15EX3030, 15QE3030, L  
BASE PLATE



Drill Thru & C-Bore For 5/16 SHCS (4) Plcs

**HARDWARE INCLUDED!**



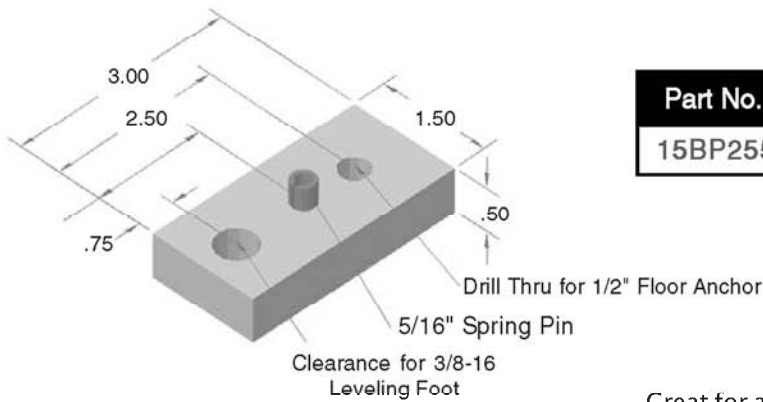
- Bolts on to end of extrusion or T-slot
- For stem casters see page 228
- For leveling feet see page 234-235
- For tapping service see page 161

Part No.	'A' Tap Thru
15BP2515	5/8-11
15BP2511	3/4-10

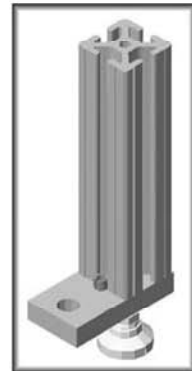
Material:  
Steel w/ Black Oxide Finish



**15EX1515, L, 15QE1515, L  
ANCHORING BASE PLATE**



Part No.	EXTRUSION
15BP2553	1.5" x 1.5"



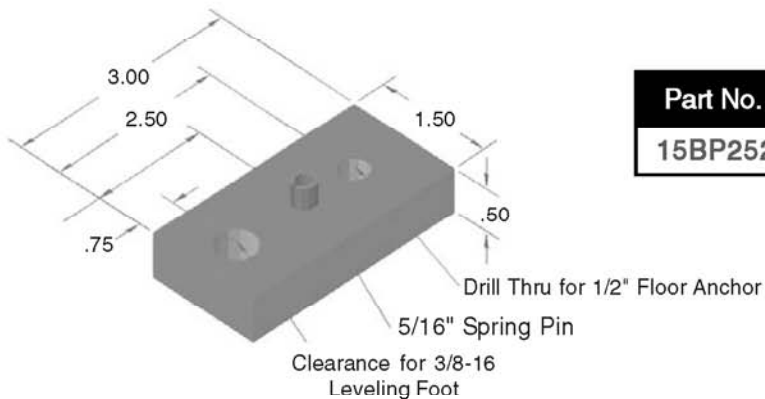
Great for anchoring your frame to the floor!

No fasteners needed for assembly!  
Spring pin is used for alignment, while the leveling foot fastens the base plate to the extrusion.

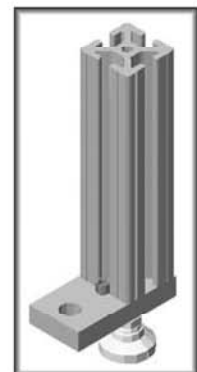
- Includes 5/16" spring pin for proper alignment
- For leveling feet see page 234-235
- For tapping service see page 161

Material:  
Aluminum w/ Clear Anodize

**15EX1515, L, 15QE1515, L  
ANCHORING BASE PLATE**



Part No.	EXTRUSION
15BP2520	1.5" x 1.5"



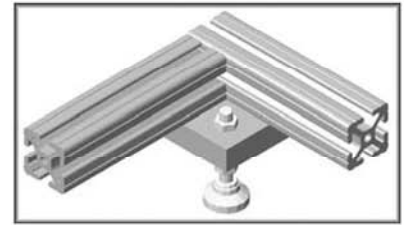
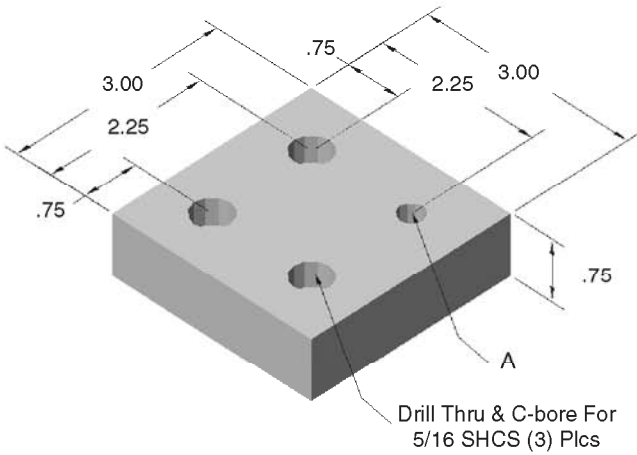
Great for anchoring your frame to the floor!

No fasteners needed for assembly!  
Spring pin is used for alignment, while the leveling foot fastens the base plate to the extrusion.

- Includes 5/16" spring pin for proper alignment
- For leveling feet see page 234-235
- For tapping service see page 161

Material:  
Steel w/ Black Oxide Finish

15EX1515, L, UL, 15QE1515, L  
BASE PLATE



- For stem casters see page 228
- For leveling feet see page 234-235
- For tapping service see page 161

Part No.	'A' Tap Thru
15BP2588	1/2-13
15BP2589	7/16-14
15BP2590	3/4-10

RECOMMENDED HARDWARE  
TO MOUNT TO EXTRUSION T-SLOT

Qty	Description	Part Number
3	5/16-18 x 7/8 SHCS	13FA3327
3	5/16-18 ECONOMY T-NUT	15FA3501



RECOMMENDED HARDWARE FOR  
MOUNTING TO EXTRUSION END

Qty	Description	Part Number
3	5/16-18 x 7/8 SHCS	13FA3327

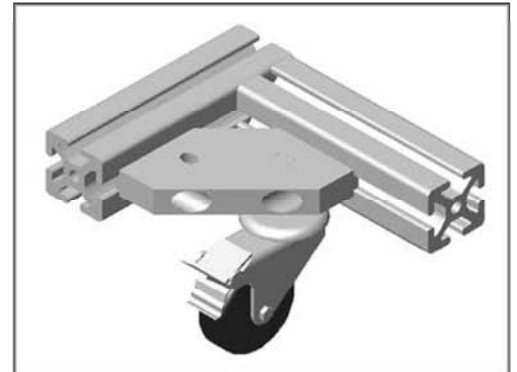
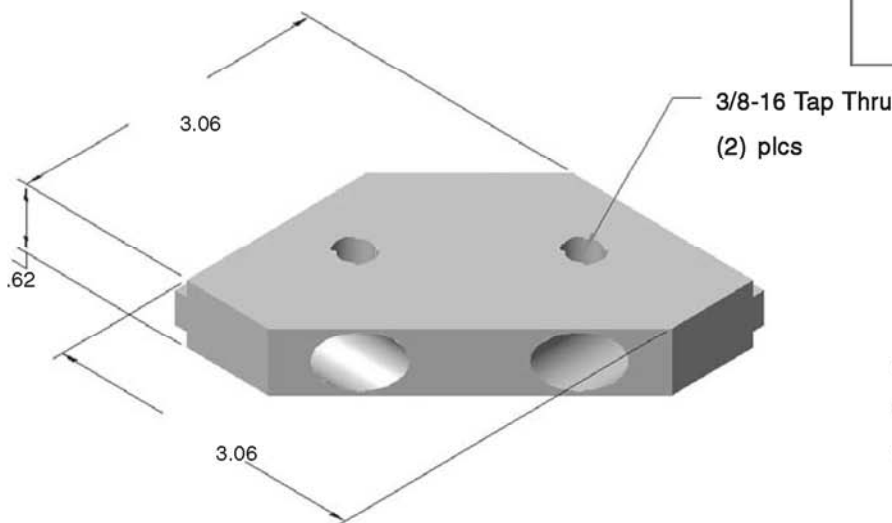
Flr.-Frame

15BP2524

15 SERIES FLOOR FIXING BASE PLATE



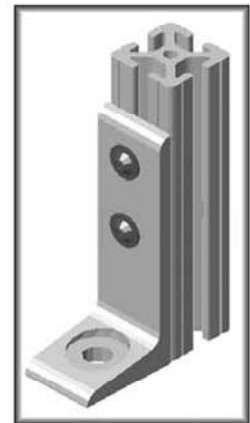
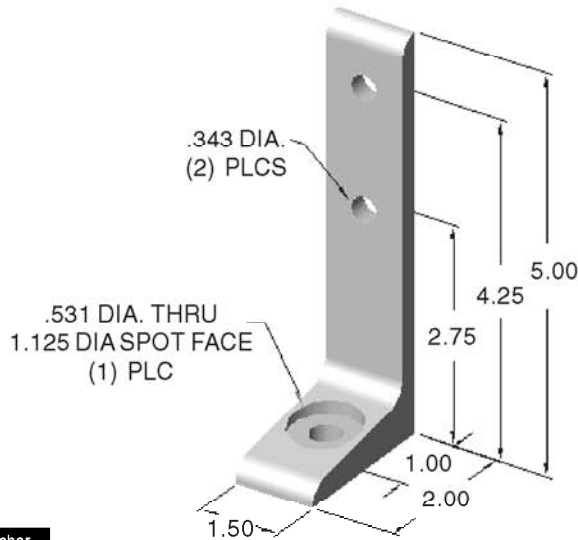
**HARDWARE INCLUDED!**



- Minimizes trip hazards on carts
- Adds strength to the frame work
- Clean Look

# 15FF5814

15 SERIES  
1.5" FLOOR MOUNT FOOT



Use with 1.5" x 1.5" Extrusion

RECOMMENDED HARDWARE

Qty	Description	Part Number
2	5/16-18 x 5/8 FBHSCS	13FA3331
1	5/16-18 DOUBLE T-NUT	15FA3502

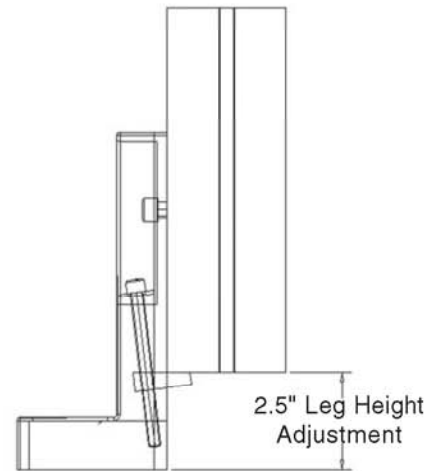
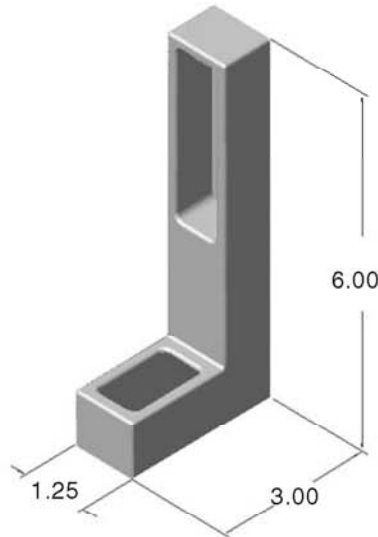
For additional fasteners and t-nuts, see pages 130-135

# 15FF5822

15 SERIES  
1.5" ADJUSTABLE FLOOR MOUNT FOOT



**HARDWARE INCLUDED!**



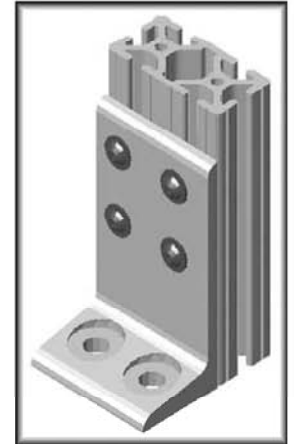
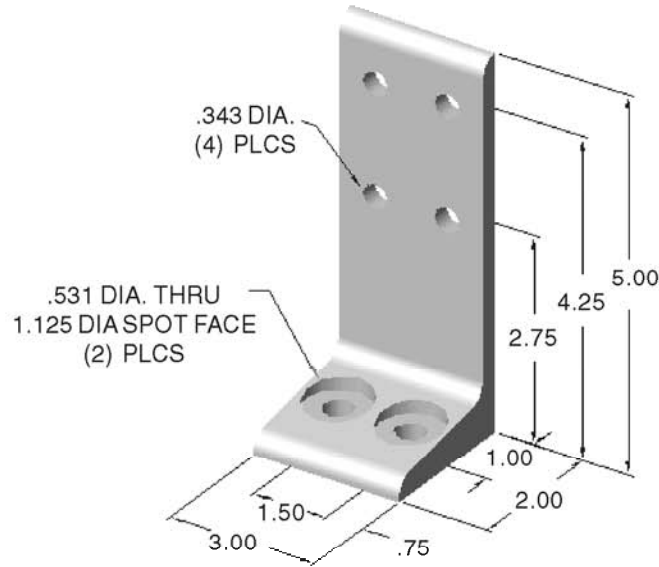
- Cast aluminum
- Black powder coat finish
- Leveling/adjusting medium duty tables and bases





# 15FF5816

15 SERIES  
3.0" FLOOR MOUNT FOOT



Use with 1.5" x 3" Extrusion

RECOMMENDED HARDWARE

Qty	Description	Part Number
4	5/16-18 x 5/8 FBHSCS	13FA3331
2	5/16-18 DOULBE T-NUT	15FA3502

For additional fasteners and t-nuts, see pages 130-135

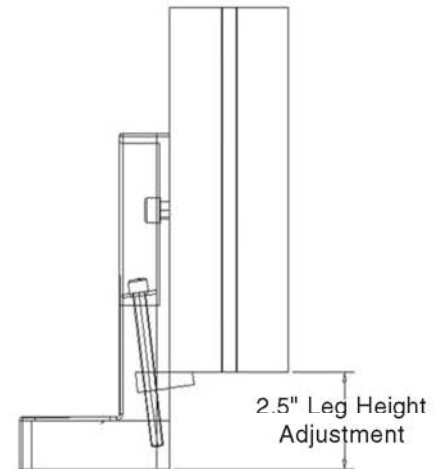
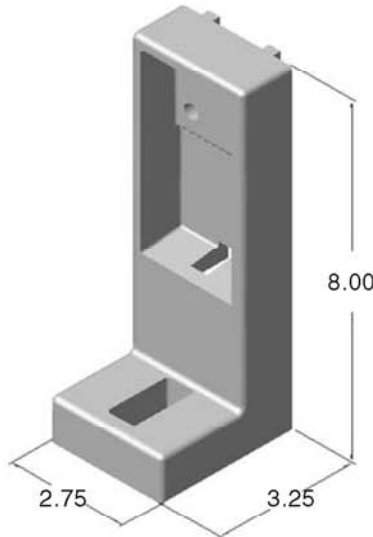
Flr.-Frame

# 15FF5824

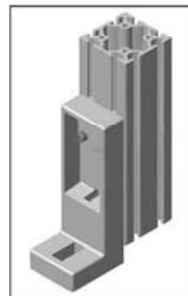
15 SERIES  
3.0" ADJUSTABLE FLOOR MOUNT FOOT



**HARDWARE INCLUDED!**



- Cast aluminum
- Black powder coat finish
- Leveling/adjusting medium duty tables and bases

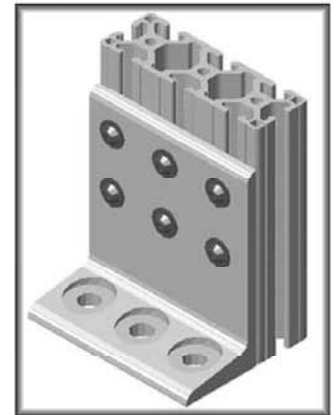
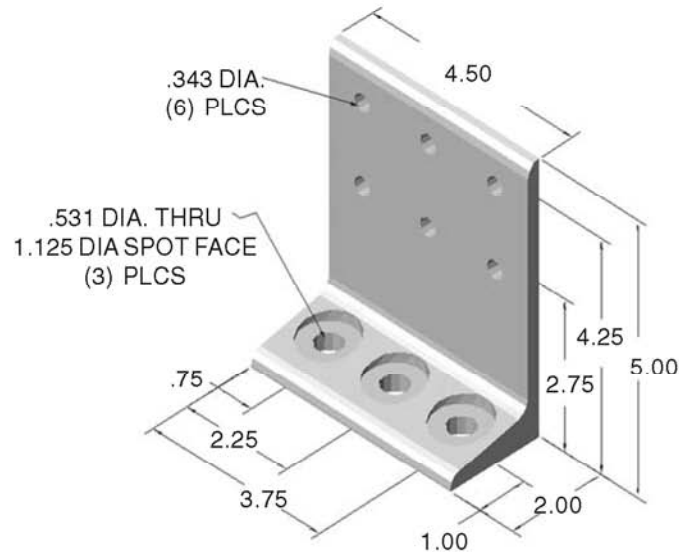


# 15FF5815

15 SERIES  
4.5" FLOOR MOUNT FOOT



FOR FAST ASSEMBLY  
USE 15FA3502



Use with: 1.5" x 4.5" Extrusion

RECOMMENDED HARDWARE

Qty	Description	Part Number
6	5/16-18 x 5/8 FBHSCS	13FA3331
3	5/16-18 DOULBE T-NUT	15FA3502

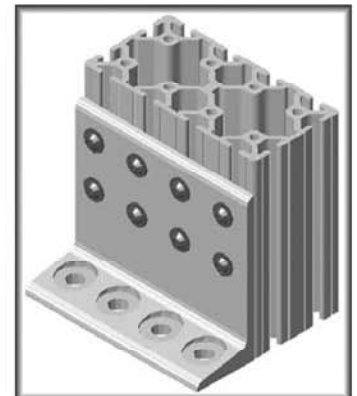
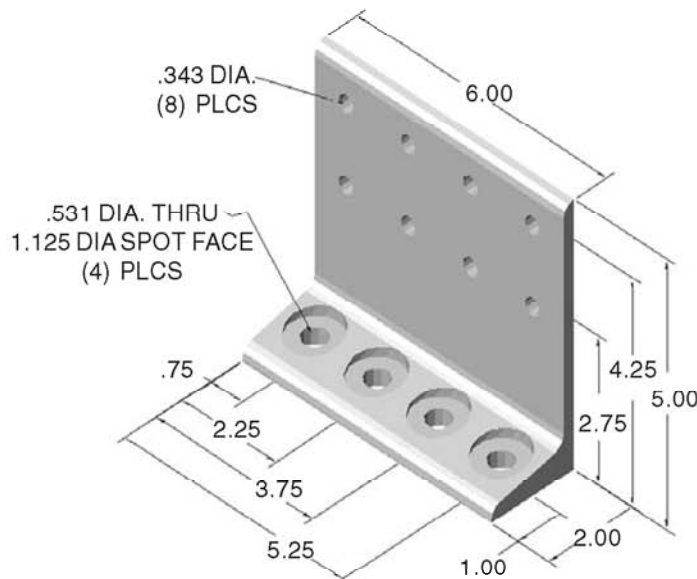
For additional fasteners and t-nuts, see pages 130-135

# 15FF5818

15 SERIES  
6.0" FLOOR MOUNT FOOT



FOR FAST ASSEMBLY  
USE 15FA3502



Use with: 3" x 6" Extrusion

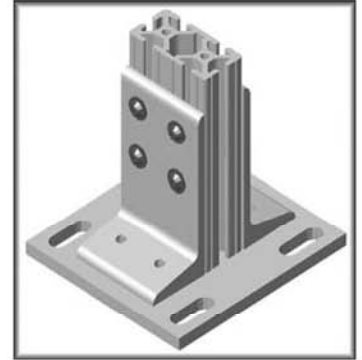
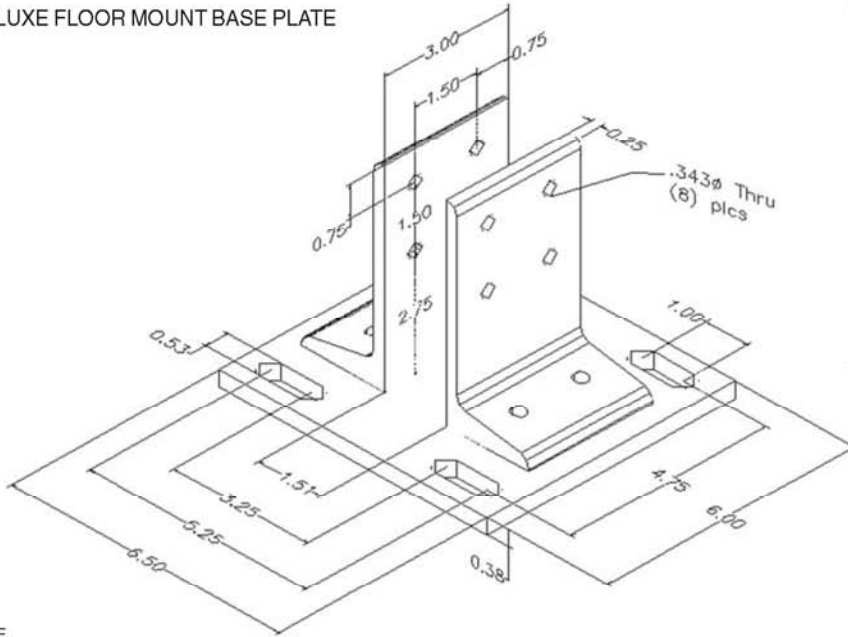
RECOMMENDED HARDWARE

Qty	Description	Part Number
8	5/16-18 x 5/8 FBHSCS	13FA3331
4	5/16-18 DOUBLE T-NUT	15FA3502

For additional fasteners and t-nuts, see pages 130-135

# 15FF5830

15 SERIES  
1.5" x 3.0" DELUXE FLOOR MOUNT BASE PLATE



RECOMMENDED HARDWARE

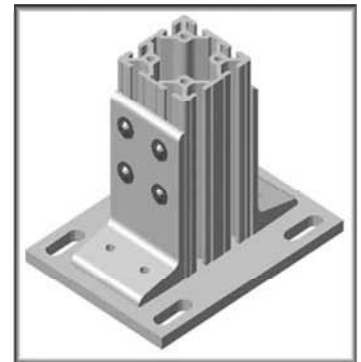
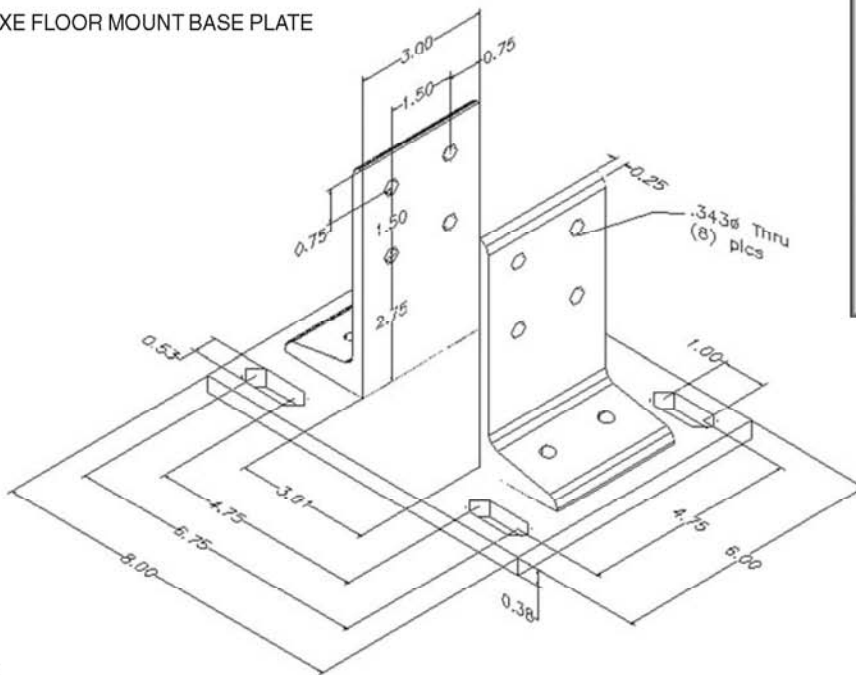
Qty	Description	Part Number
8	5/16-18 x 5/8 FBHSCS	13FA3331
4	5/16-18 DOULBE T-NUT	15FA3502

For additional fasteners and t-nuts, see pages 130-135

- Mount your frame to the floor quickly
- Stabilize your frame
- Strong method of mounting your frame to the floor
- Easy vertical adjustment
- Base plate slotted for additional adjustment

# 15FF5833

15 SERIES  
3.0" x 3.0" DELUXE FLOOR MOUNT BASE PLATE



RECOMMENDED HARDWARE

Qty	Description	Part Number
8	5/16-18 x 5/8 FBHSCS	13FA3331
4	5/16-18 DOULBE T-NUT	15FA3502

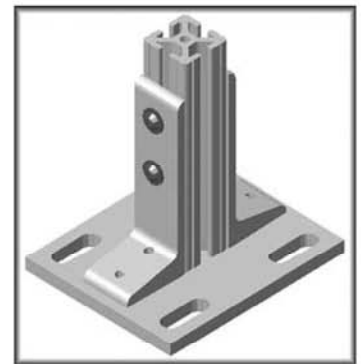
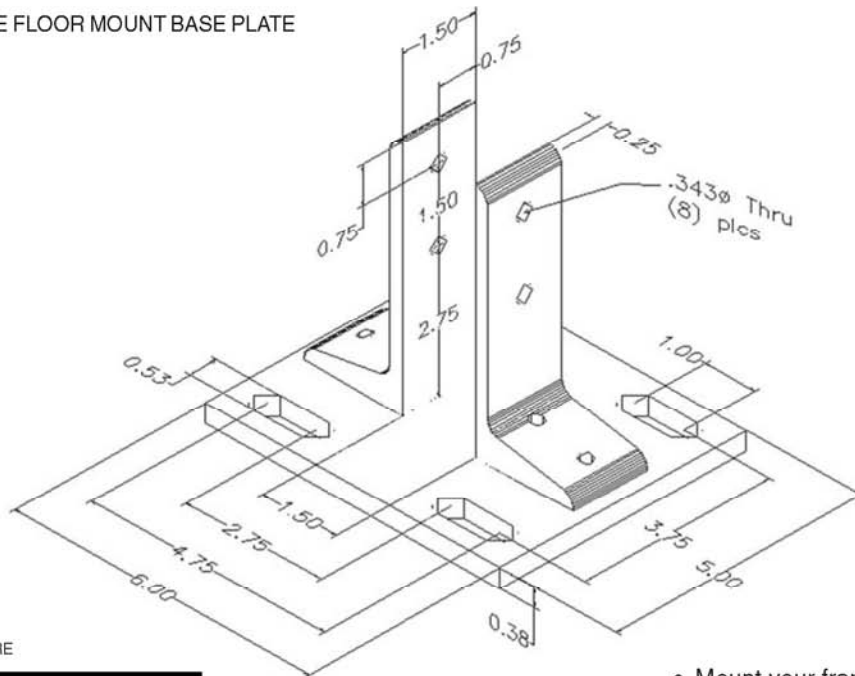
For additional fasteners and t-nuts, see pages 130-135

- Mount your frame to the floor quickly
- Stabilize your frame
- Strong method of mounting your frame to the floor
- Easy vertical adjustment
- Base plate slotted for additional adjustment

Flr.-Frame

# 15FF5835

15 SERIES  
1.5" x 1.5" DELUXE FLOOR MOUNT BASE PLATE



RECOMMENDED HARDWARE

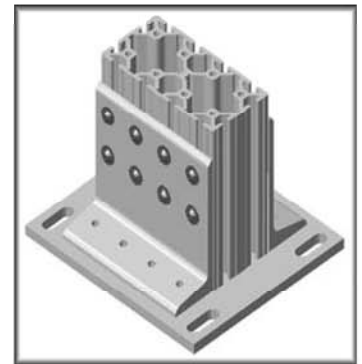
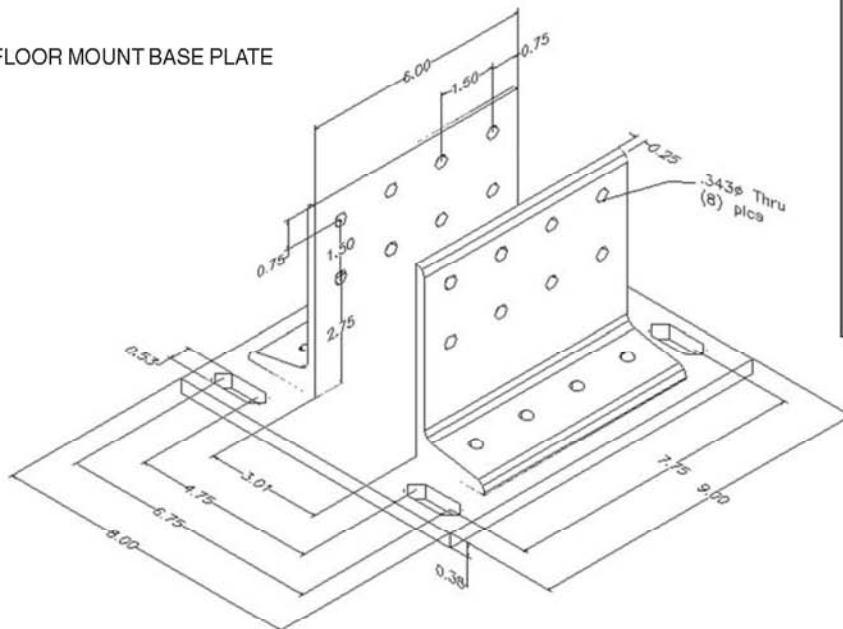
Qty	Description	Part Number
4	5/16-18 x 5/8 FBHSCS	13FA3331
2	5/16-18 DOULBE T-NUT	15FA3502

For additional fasteners and t-nuts, see pages 130-135

- Mount your frame to the floor quickly
- Stabilize your frame
- Strong method of mounting your frame to the floor
- Easy vertical adjustment
- Base plate slotted for additional adjustment

# 15FF5838

15 SERIES  
3.0" x 6.0" DELUXE FLOOR MOUNT BASE PLATE



RECOMMENDED HARDWARE

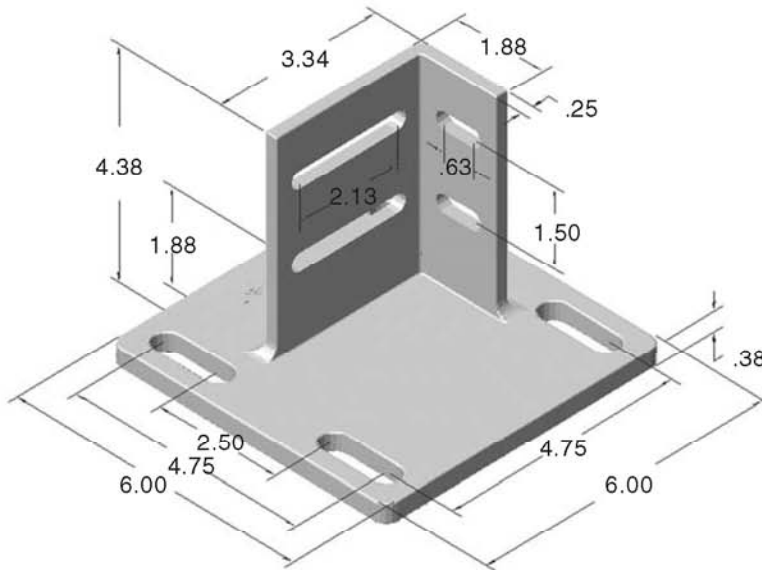
Qty	Description	Part Number
16	5/16-18 x 5/8 FBHSCS	13FA3331
8	5/16-18 DOULBE T-NUT	15FA3502

For additional fasteners and t-nuts, see pages 130-135

- Mount your frame to the floor quickly
- Stabilize your frame
- Strong method of mounting your frame to the floor
- Easy vertical adjustment
- Base plate slotted for additional adjustment

# 15FF5850

15 SERIES  
1.5" x 3.0" DELUXE FLOOR MOUNT BASE PLATE



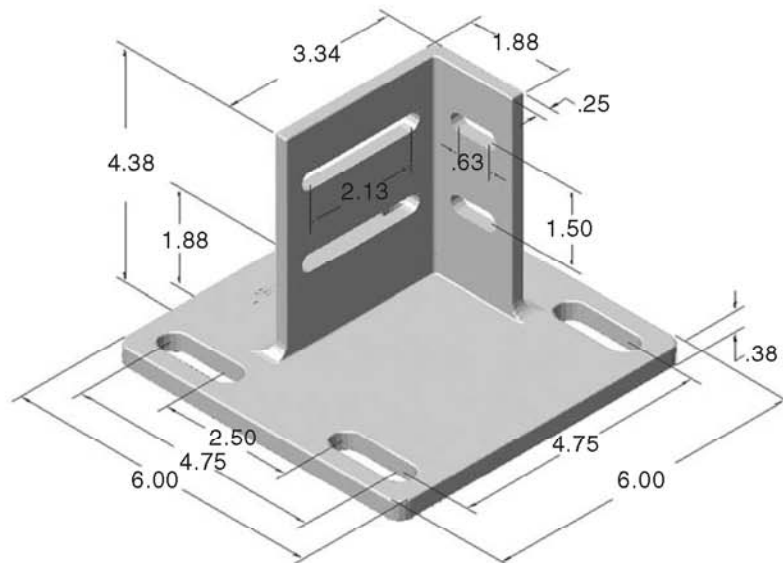
Flr.-Frame

- Mount your frame to the floor FAST
- Stabilize your frame
- Strong method of mounting your frame to the floor
- Easy vertical adjustment
- Base plate slotted for additional adjustment

**HARDWARE INCLUDED!**

# 15FF5852

15 SERIES  
3.0" x 3.0" DELUXE FLOOR MOUNT BASE PLATE

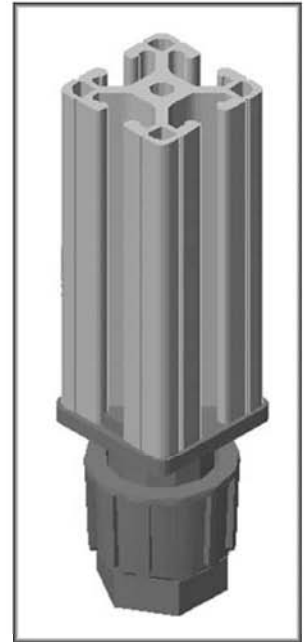
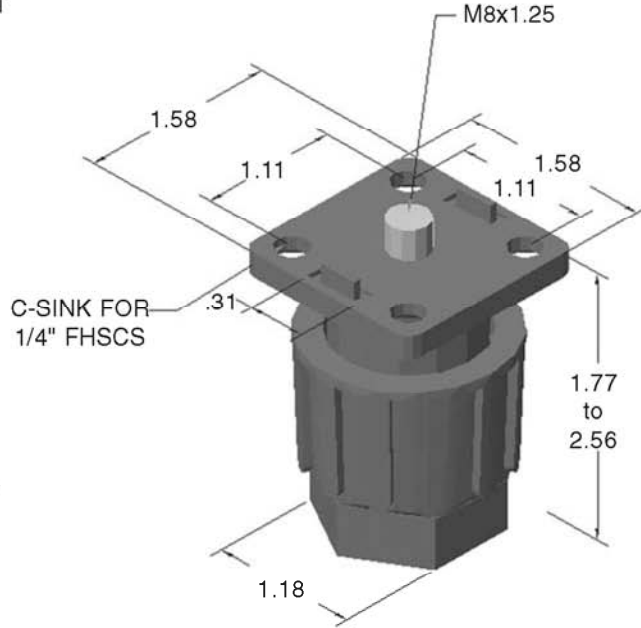


- Mount your frame to the floor FAST
- Stabilize your frame
- Strong method of mounting your frame to the floor
- Easy vertical adjustment
- Base plate slotted for additional adjustment

**HARDWARE INCLUDED!**

# 15FF5820

15 SERIES  
LIGHT DUTY LEVELING FOOT



• See page 161 for tap service

RECOMMENDED HARDWARE

QTY	DESCRIPTION	PART #
4	1/4-20 x 5/8 FHSCS	13FA3111

For additional fasteners and t-nuts, see pages 130-135

- Ideal for cubical panels & office furniture
- Turn foot for 3/4" adjustment
- Black fiberglass reinforced nylon
- Zinc plated steel mechanism
- 330 lb load capacity

## Check Out These FAST Floor To Frame Products!



FLOOR MOUNT FEET



LEVELING FEET



HEAVY DUTY CASTERS



*Fast-Flexible-Functional*

## MACHINE BASES



- Heavy-duty bases
- No welding
- Customize for any application
- Completely Modular
- Strong & Durable
- Robotics, feeders, other equipment

Flr.-Frame

[www.faztek.net](http://www.faztek.net)