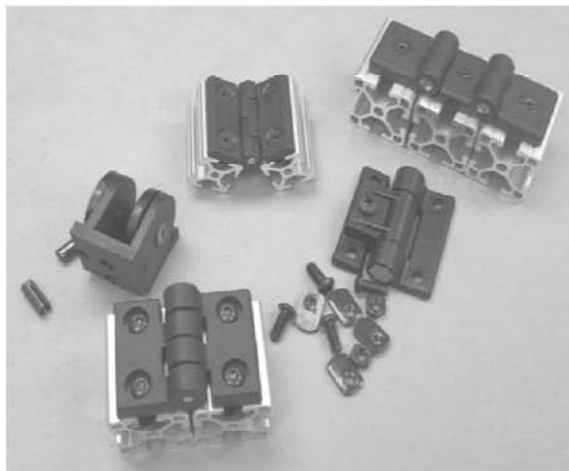


SECTION 30

40 SERIES

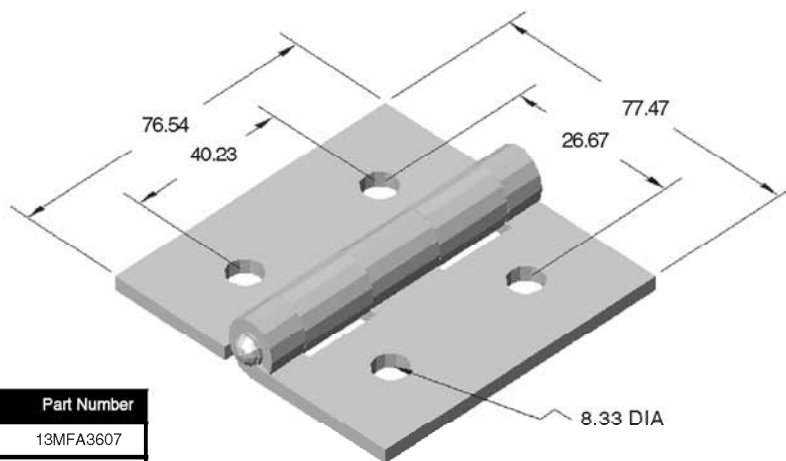
DOOR HINGES

DOOR HINGES
PIVOT HINGES



40HI8530

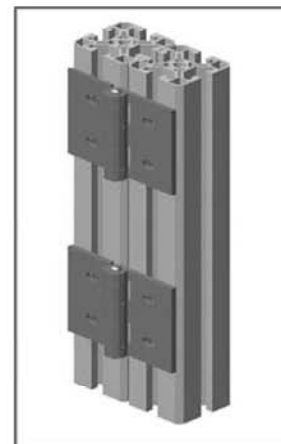
40 SERIES
METAL HINGE



RECOMMENDED HARDWARE

Qty	Description	Part Number
4	M8 x 12 BHSCS	13MFA3607
4	M8 x 1.25 ECONOMY T-NUT	15MFA3920

For additional fasteners and t-nuts, see pages 403-406

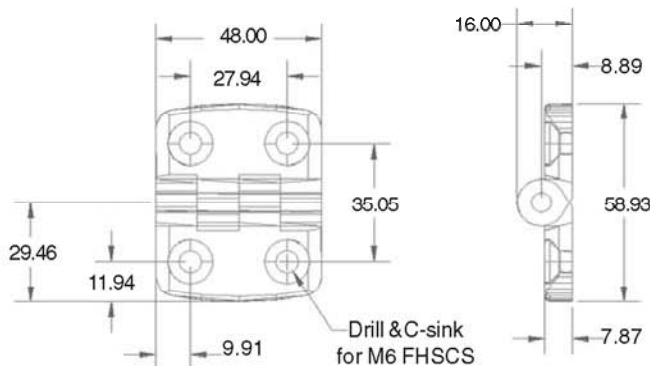


- Strong connection
- Black Powder Coated Steel

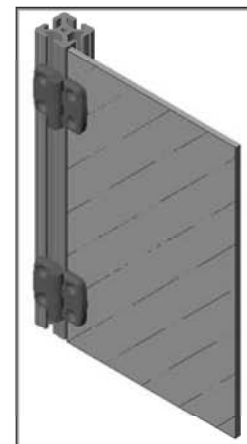
40HI8540

40 SERIES
PLASTIC HINGE

Used to hang an
unframed panel on an
extrusion frame!



**HARDWARE
INCLUDED!**

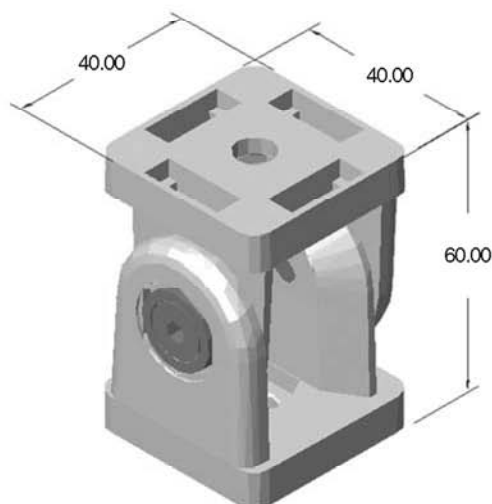


- Hardware Included For Panel & Extrusion Mounting
- Black Fiberglass Reinforced Nylon

**Should not be used to hinge
two extrusions together!**

40HI8712

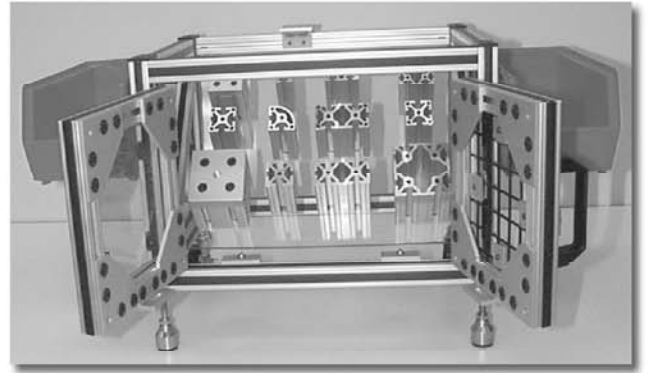
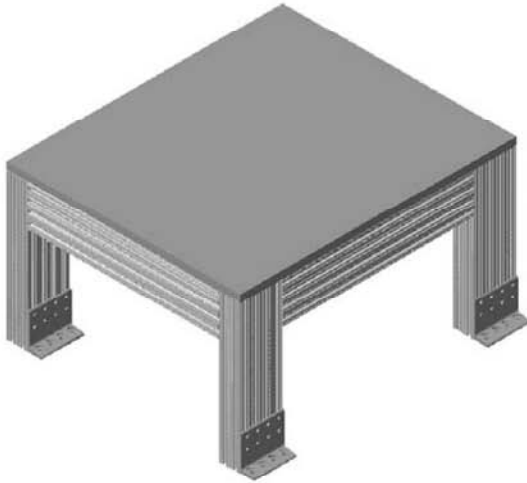
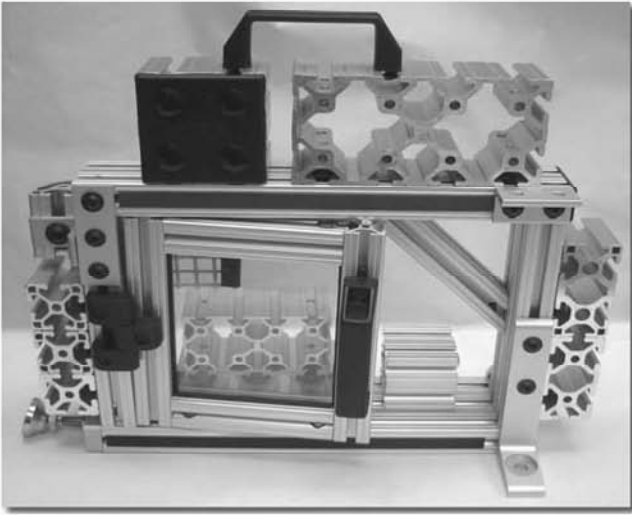
40 SERIES
BLACK OXIDE STEEL PIVOT HINGE



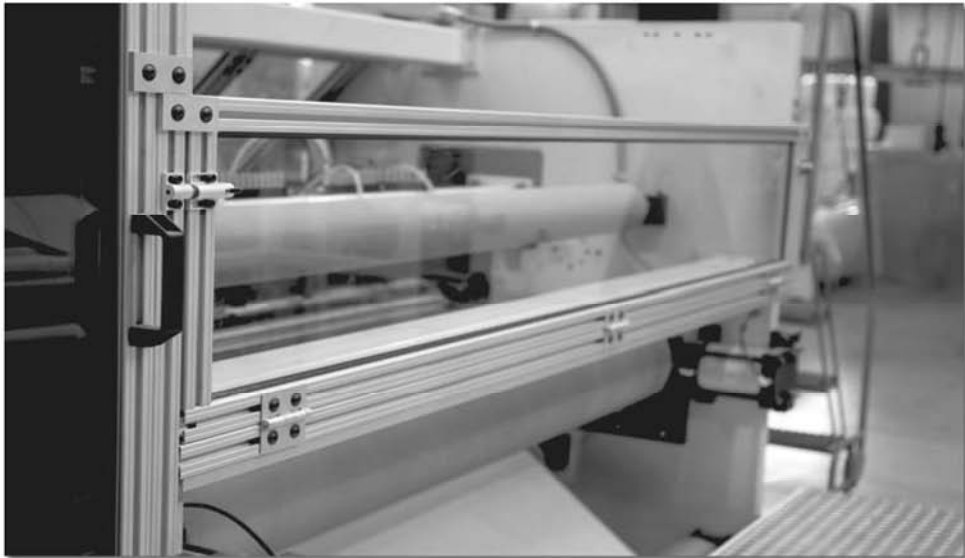
**HARDWARE
INCLUDED!**



- Non rotation pinfor extrusion
- Adjustability from 0° to 180°



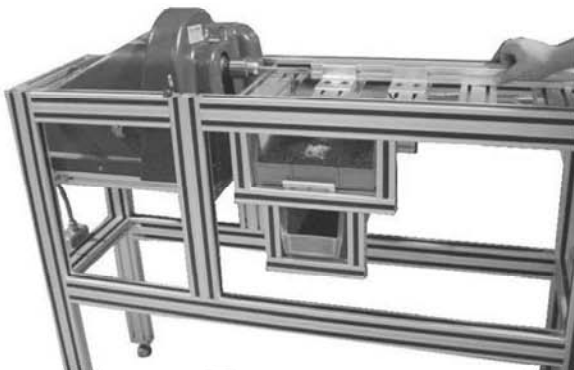
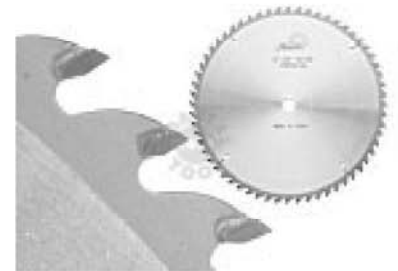
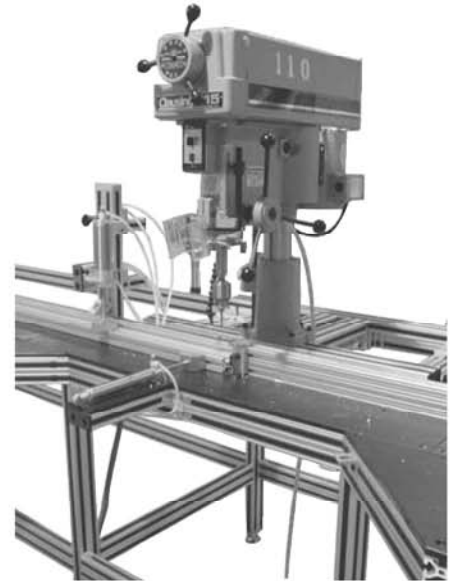
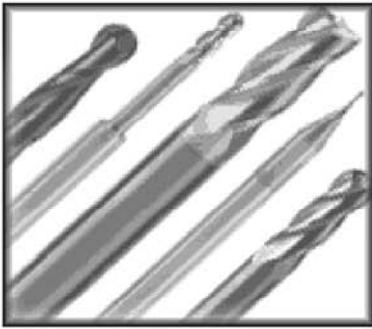
Hinges



SECTION 31

40 SERIES

MACHINING SERVICES

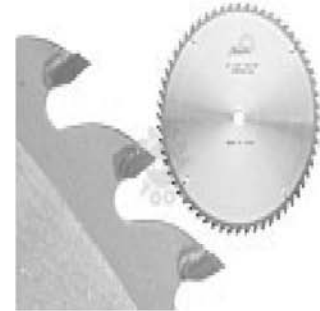


ADVANTAGES

- FAST
- CLEAN
- ACCURATE
- CONVENIENT
- COST EFFECTIVE

40 SERIES CUT TO LENGTH SERVICES (T-Slotted Extrusions)

SERVICE NUMBER	DESCRIPTION
15MA9006	CUT TO LENGTH 40EX4040UL
15MA9007	CUT TO LENGTH 40EX4080UL



Faztek will cut your order for you on our state of the art saw equipment!

BENEFITS:

- *State of the art saws*
- *Tolerance on cuts are +/- .015"*
- *Squareness of cuts are .002" per inch*
- *Extrusions up to 100" can be shipped via*



UPS and the UPS brandmark are registered trademarks that are used with permission by its owner, United Parcel Service of America, Inc. All rights reserved.

40 SERIES EXTRUSION END TAPS

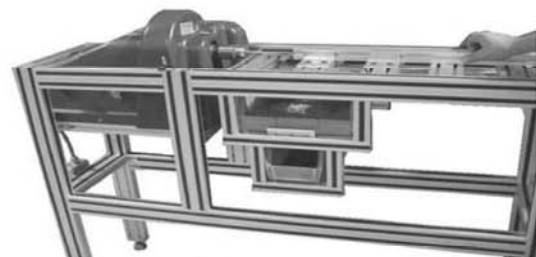
SERVICE NUMBER	DESCRIPTION
15MA9050	5/16-18 TAP FOR 40EX4040UL
15MA9051	5/16-18 TAP FOR 40EX4080UL
15MA9056	M8 x 1.25 TAP FOR 40EX4040UL
15MA9057	M8 x 1.25 TAP FOR 40EX4080UL

WHY TAP YOUR EXTRUSIONS?

- *End fasteners - page 141*
- *Casters - page 228-234*
- *Base plates - pages 398*
- *Leveling feet - page 234-235*
- *Endcaps - page 419*
- *Joining Plates - pages 394-395*

NOTE:

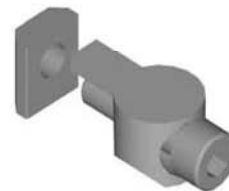
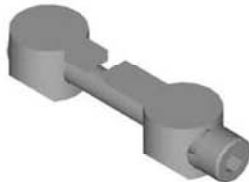
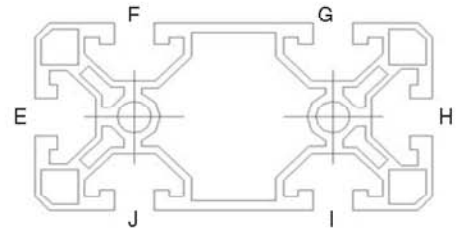
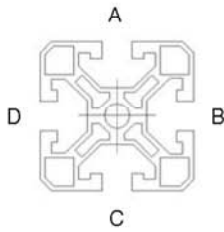
- **Service is per end**



Machining

40 SERIES ANCHOR / BUTT FASTENER COUNTERBORES

SERVICE NUMBER	DESCRIPTION
15MA9071	40 SERIES COUNTERBORE DRILLING SERVICE
	ANCHOR / BUTT FASTENERS - USE SAME SERVICE



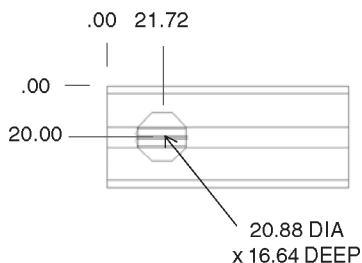
BENEFITS:

- **STRONGEST** of all connections
- Tolerance on counterbores are +/- .015"
- Infinite positioning when using anchors
- Clean, flush look!

Assembly Tip

Extrusions shorter than 4.00" Long cannot be assembled if counterbored "A" both ends. The part does not provide enough clearance for a wrench to access the fastener and properly tighten it down.

EXTRUSION DETAIL



STYLE EXAMPLE

40EX4040UL x 889.00" W/15MA9071 IN A BOTH ENDS

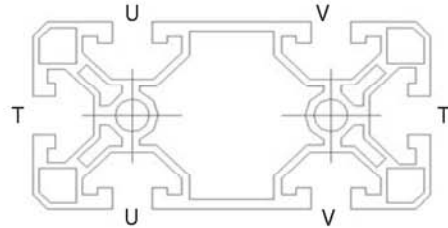
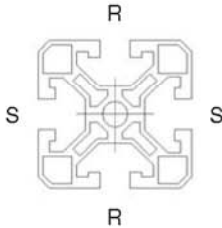
(this service will include 2 counterbores)

40EX4080UL x 1574.800" W/ 15MA9071 IN FG IJ BOTH ENDS

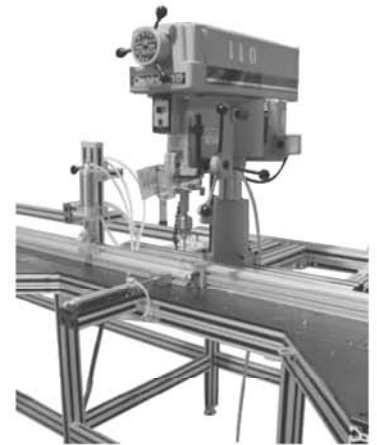
(this service will include 8 counterbores)

40 SERIES ACCESS HOLE DRILLING SERVICE

SERVICE #	DESCRIPTION
15MA9060	ACCESS HOLE DRILLING SERVICE (.218 DIA) - STANDARD
15MA9061	ACCESS HOLE DRILLING SERVICE (.06 TO .217 DIA)
15MA9073	ACCESS HOLE DRILLING SERVICE (.219 TO .375 DIA)



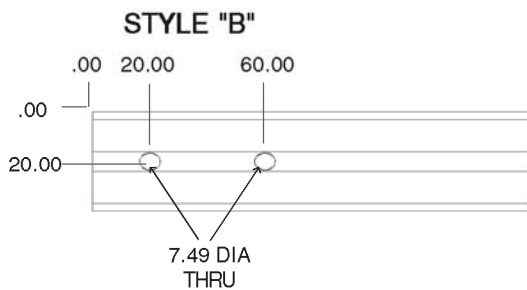
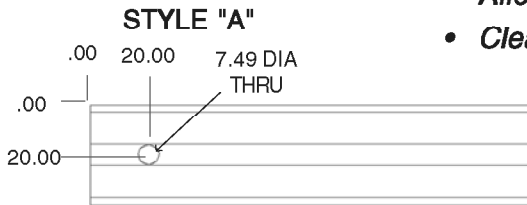
TO DRILL YOUR OWN
ACCESS HOLES, SEE
PAGE 201



Fasteners

BENEFITS:

- Quick, accurate alignment
- Tolerance on access holes are +/- .030"
- Allows for smaller panel notches
- Clean, hidden look!



OPEN STYLE EXAMPLE

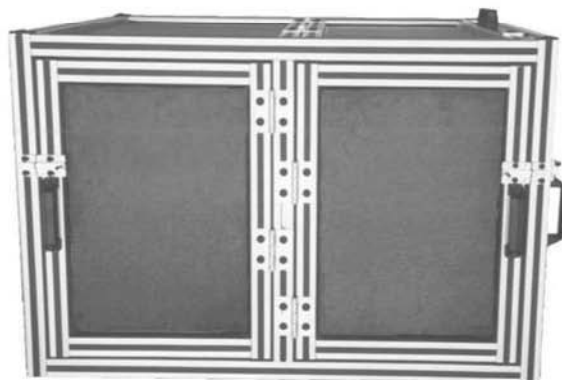
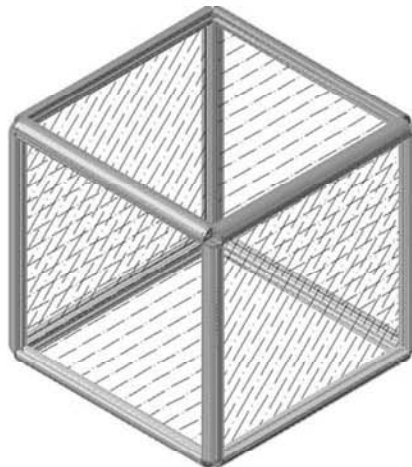
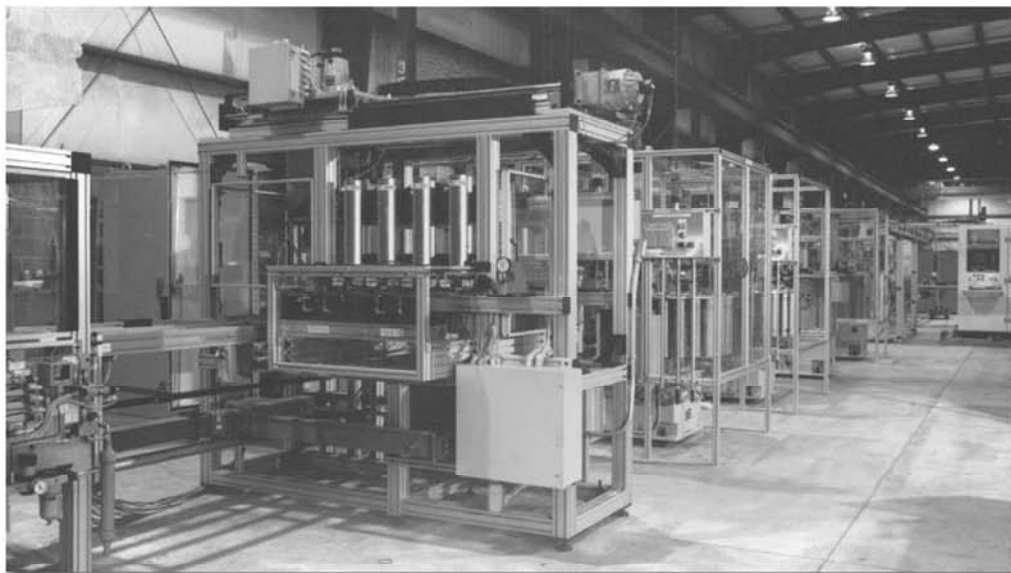
40EX4080UL x 381.00" W/15MA9060 IN U @ 20.00, 127.00 AND IN V @ 20.00, 266.70

(this service will include 4 access holes)

STYLE A EXAMPLE

40EX4040UL x 1143.00" W/15MA9060 IN R @ STYLE A BOTH ENDS

(this service will include 2 access holes)



40 SERIES CUSTOM MITER CUTS

SERVICE NO.	DESCRIPTION
15MA9065	MITER CUT SERVICE FOR 40EX4040UL
15MA9066	MITER CUT SERVICE FOR 40EX4080UL

Contact Faztek to request
a standard miter cut template!

- *Please submit a drawing with all miter cuts*
- *Service is per end*
- *Great support for heavy duty applications*

• *All 40 series extrusions can be miter cut from 30 ° to 90 °*

40 SERIES MITER CUTS AND COUNTERBORES

SERVICE NO.	DESCRIPTION
15MA9068	MITER CUT & C-BORE FOR 40EX4040UL
15MA9069	MITER CUT & C-BORE FOR 40EX4080UL

**HARDWARE
INCLUDED!**

- *40 series extrusions can be miter cut and counterbored from 45 ° to 90 °*
- *Please submit a drawing with any mitercut and c-bore*
- *Maximum length of 72" - DUE TO SAFETY ISSUES!!*
- *Service is per end*

Contact Faztek to request
a standard miter cut template!



SECTION 32

40 SERIES

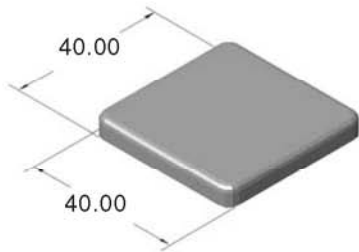
- ACCESSORIES -

ENDCAPS

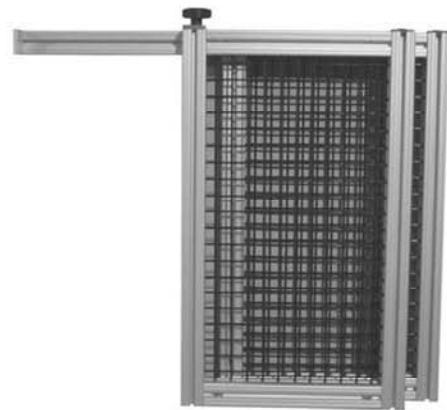
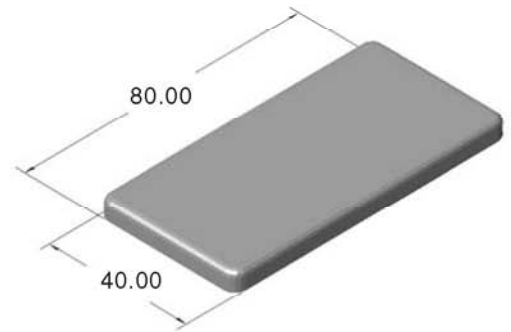


40 SERIES ENDCAPS

40AC7925
40mm x 40mm ENDCAP



40AC7930
40mm x 80mm ENDCAP



Accessories

