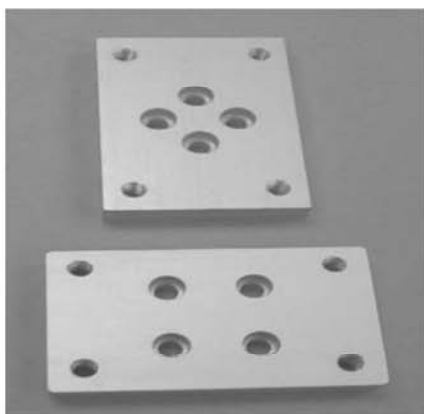


SECTION 20

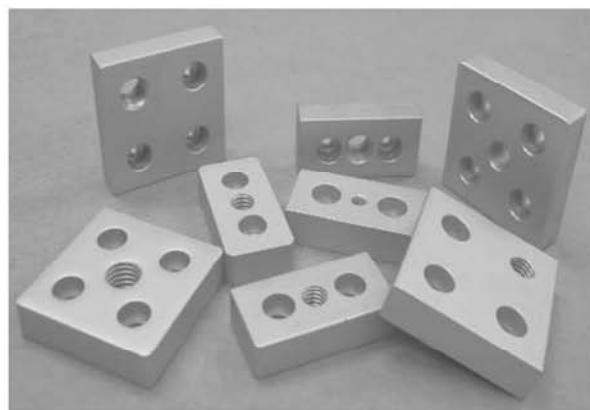
25 SERIES

BASE PLATES / FLOOR TO FRAME

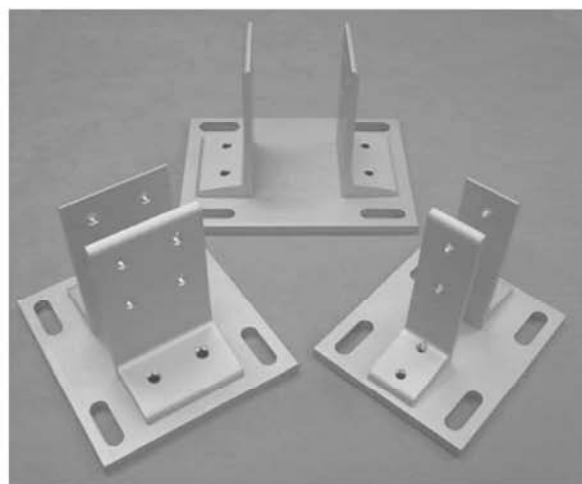
BASE PLATES FOR CASTERS



BASE PLATES FOR LEVELING FEET



DELUXE FLOOR MOUNT BASE PLATES

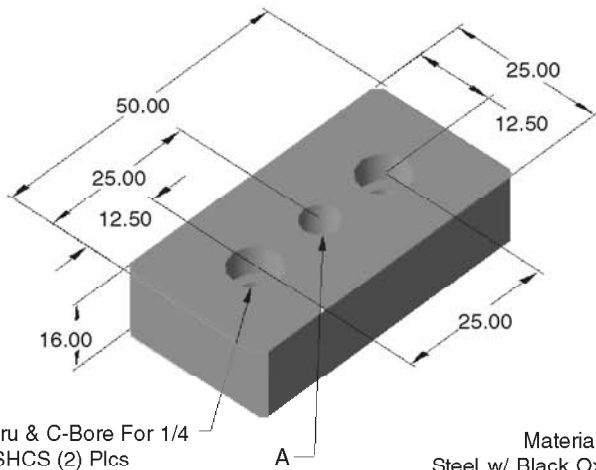


FLOOR MOUNT FEET



Flr.-Frame

25QE2550 BASE PLATE

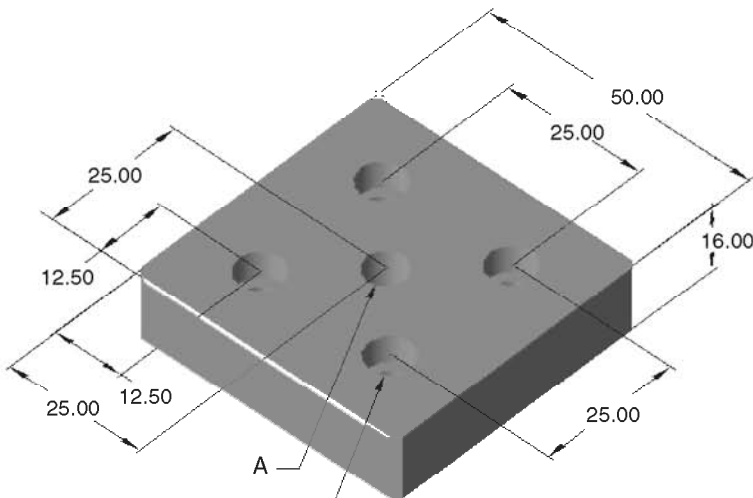


Part No.	'A' Tap Thru
25BP2520	1/4-20
25BP2521	3/8-16
25BP2522	1/2-13

Drill Thru & C-Bore For 1/4 SHCS (2) Plcs

Material:
Steel w/ Black Oxide Finish

25QE5050 BASE PLATE



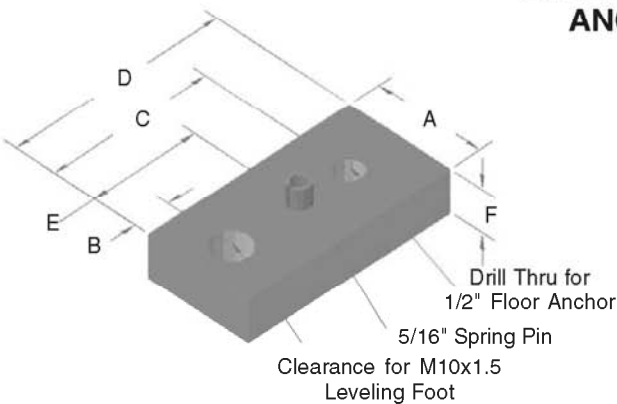
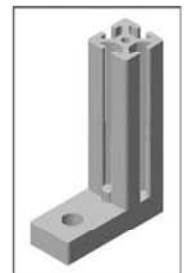
Part No.	'A' Tap Thru
25BP2523	1/4-20
25BP2524	3/8-16
25BP2525	1/2-13

Drill Thru & C-Bore For 1/4 SHCS (4) Plcs

Material:
Steel w/ Black Oxide Finish

- Bolts on to end of extrusion or T-slot
- For stem casters see page 228
- For leveling feet see page 234-235
- For tapping service see page 375

25QE2550, 25QE5050 LEVELING ANCHORING BASE PLATE



Great for anchoring your frame to the floor!

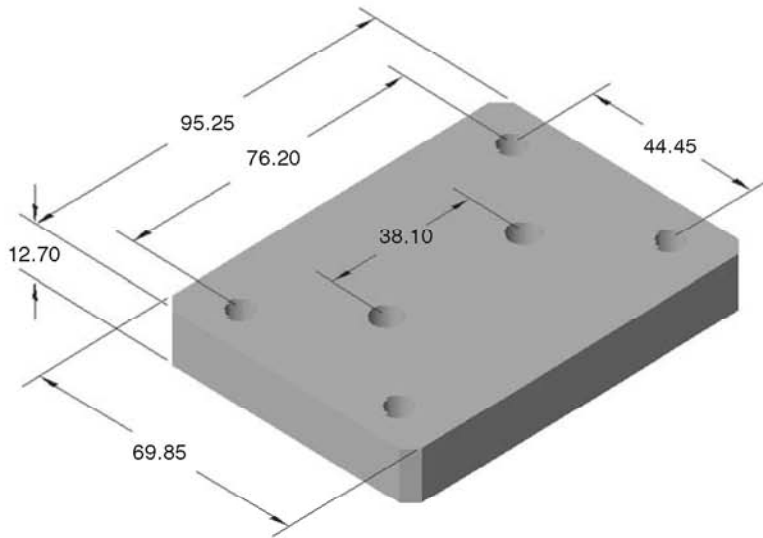
Part No.	Extrusion	A	B	C	D	E	F
25BP2530	25QE2550	25.4	15.7	50.8	63.5	39.4	9.9
25BP2526	25QE5050	50.8	41.2	76.3	88.9	64.8	9.9

Material:
Steel w/ Black Oxide Finish

- Bolts on to end of extrusion or T-slot
- For leveling feet see page 234-235
- For tapping service see page 375

25BP2527

25 SERIES FLANGE MOUNT CASTER BASE PLATE



RECOMMENDED CASTERS FOR MOUNTING TO BASE PLATES

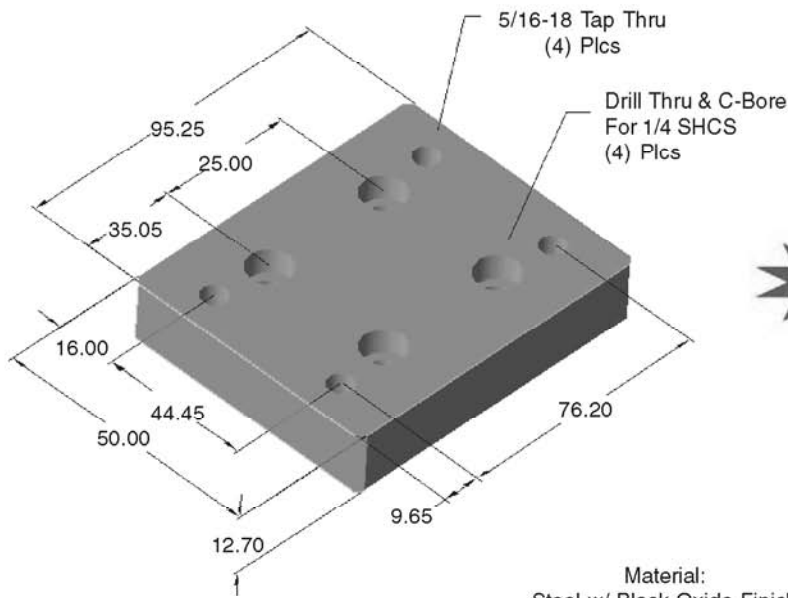
Pg #	Description	Part No.
229	4" SWIVEL CASTER W/ BRAKE	13CA8102
229	4" RIGID CASTER	13CA8103
229	5" SWIVEL CASTER W/ BRAKE	13CA8108
229	5" RIGID CASTER	13CA8110
229	3.5" SWIVEL CASTER W/ BRAKE	13CA8113
229	3.5" RIGID CASTER	13CA8114
229	5" RIGID CASTER	13CA8115
229	5" SWIVEL CASTER W/ BRAKE	13CA8116

* SEE CASTER SECTION FOR RECOMMENDED HARDWARE TO MOUNT TO BASE PLATES

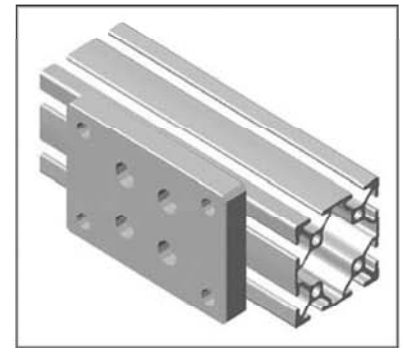
- Bolts on to end of extrusion or T-slot
- For mounting casters see page 228-234
- For tapping service see page 375

25BP2527 / 25BP2528

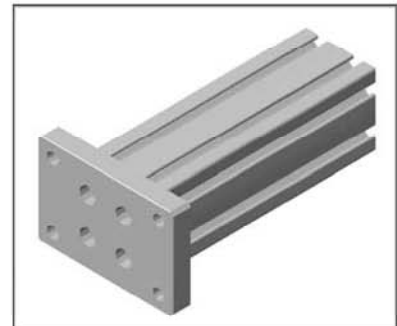
25 SERIES FLANGE MOUNT CASTER BASE PLATE



Material:
Steel w/ Black Oxide Finish



For T-Slot Mounting



For Extrusion End Mounting

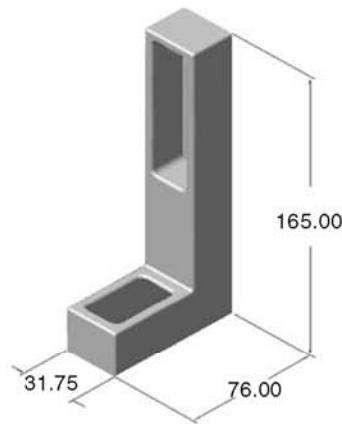
- Bolts on to end of extrusion or to T-Slot
- For mounting casters see pages 228-234
- For tapping service see page 375

25FF5615

ADJUSTABLE FLOOR MOUNT FOOT
25mm x 25mm



- Cast aluminum
- Black powder coat finish
- Leveling/adjusting medium duty tables and bases

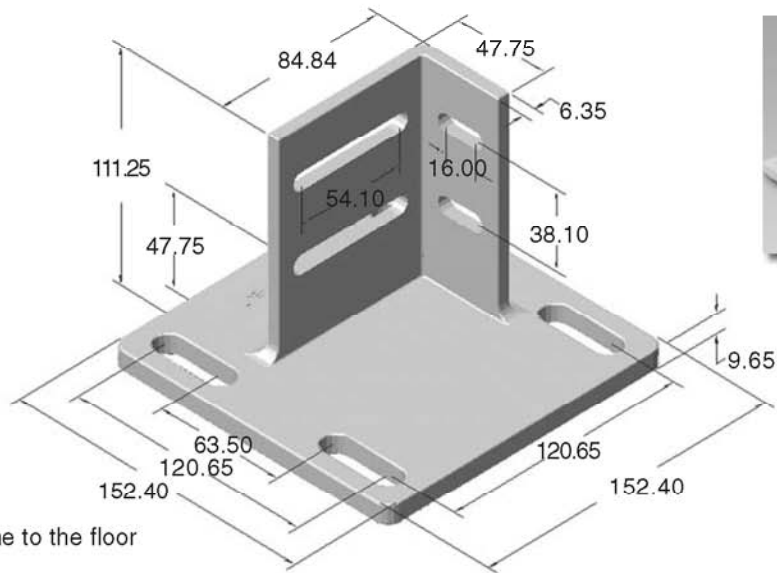


25FF5840

FLOOR MOUNT BASE PLATE
25mm x 25mm



- Mount your frame to the floor FAST
- Stabilize your frame
- Strong method of mounting your frame to the floor
- Easy vertical adjustment
- Base plate slotted for additional adjustment



25FF5842

FLOOR MOUNT BASE PLATE
25mmx50mm, 25mmx75mm, 50mm



- Mount your frame to the floor FAST
- Stabilize your frame
- Strong method of mounting your frame to the floor
- Easy vertical adjustment
- Base plate slotted for additional adjustment

