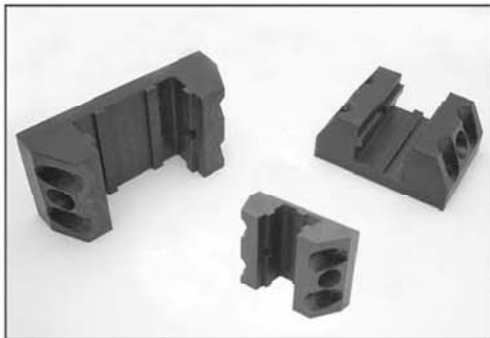


# SECTION 17

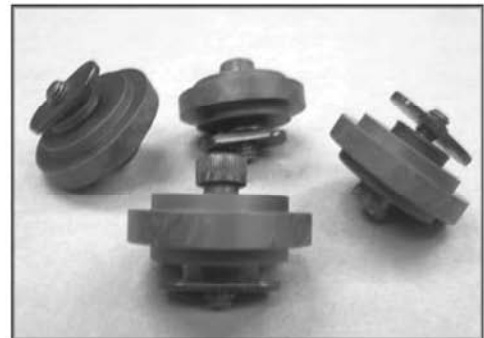
## 10 SERIES

### LINEAR MOTION

**LINEAR BEARINGS**



**ROLLER WHEELS**

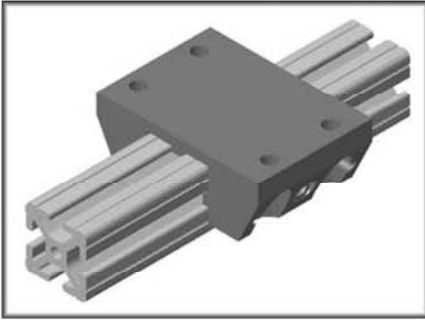


**LINEAR BEARING  
BRAKE KITS**

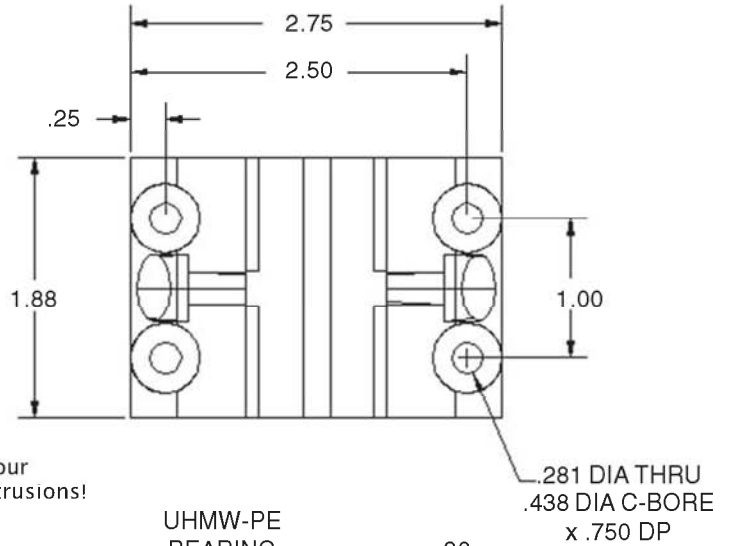


# 10LM8440

10 SERIES  
DOUBLE FLANGE LINEAR BEARING



FOR USE WITH  
10EX1010 EXTRUSION



Keyed to adapt to our  
T-Slotted Aluminum Extrusions!

UHMW-PE (Ultra High Molecular Weight Polyethylene) is a self-lubricating material with a very low coefficient of friction.

## Ideal Applications

- Adjustable Machine Stops
- Drawer Slides
- Horizontal Part Shuttles
- Horizontal Fixturing Applications

UHMW is an FDA  
Approved Material!

RECOMMENDED HARDWARE FOR MOUNTING AN  
EXTRUSION TO THE TOP SURFACE OF A LINEAR BEARING

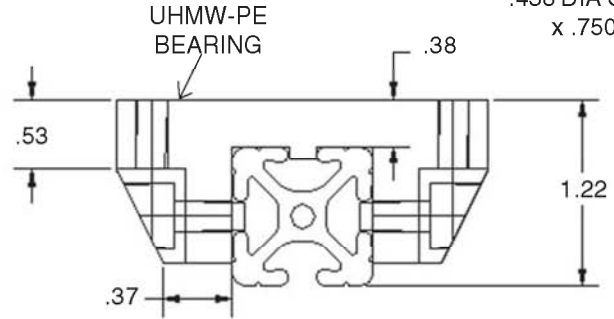
Qty	Description	Part Number
4	1/4-20 x 5/8 SHCS	13FA3304
4	1/4-20 ECONOMY T-NUT	10FA3121

For additional fasteners and t-nuts see pages 300-303

## Advantages

- Solid One Piece Construction
- Eliminated Thread Pull-out
- Strong!
- Clean Look!

When designing , never hang a  
load from the linear bearings!



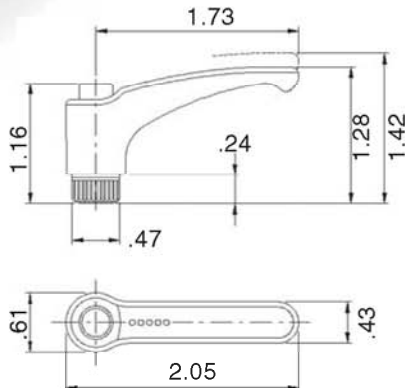
# 10LM8420

RATCHETING "L" HANDLE BRAKE KIT



ERGOSTYLE®  
Ergonomic Brake Handle!

"L" handle is recommended  
for proper torque!



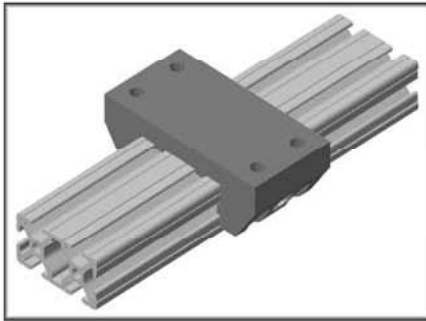
Brake capacity for "L" handle  
is approximately 75 lbs  
for 10 series!

Tip on assembling  
linear brake kits  
on page 343

Hardware Included!  
(1/4-20 x 3/4 Carriage Bolt)

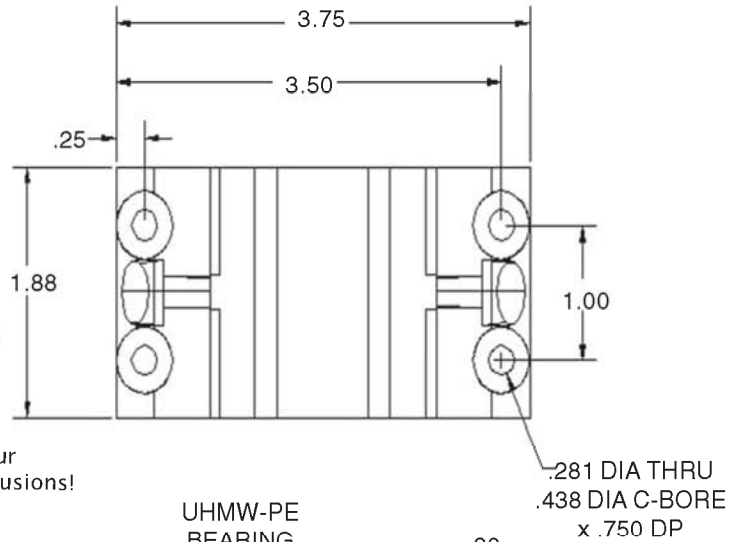
## 10LM8442

10 SERIES  
DOUBLE FLANGE LINEAR BEARING



FOR USE WITH  
10EX1020 EXTRUSION

Keyed to adapt to our  
T-Slotted Aluminum Extrusions!

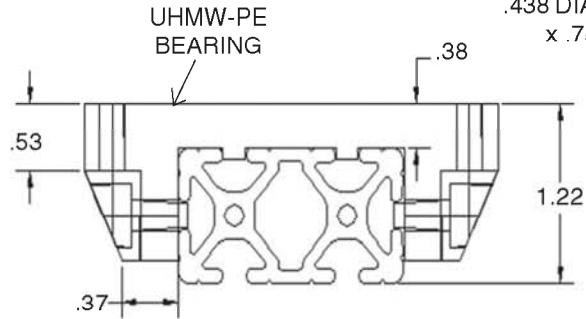


**UHMW-PE** (Ultra High Molecular Weight Polyethylene) is a self-lubricating material with a very low coefficient of friction.

### Ideal Applications

- Adjustable Machine Stops
- Drawer Slides
- Horizontal Part Shuttles
- Horizontal Fixturing Applications

UHMW is an FDA  
Approved Material!



### Advantages

- Solid One Piece Construction
- Eliminated Thread Pull-out
- Strong!
- Clean Look!

When designing , never hang a  
load from the linear bearings!

RECOMMENDED HARDWARE FOR MOUNTING AN  
EXTRUSION TO THE TOP SURFACE OF A LINEAR BEARING

Qty	Description	Part Number
4	1/4-20 x 5/8 SHCS	13FA3304
4	1/4-20 ECONOMY T-NUT	10FA3121

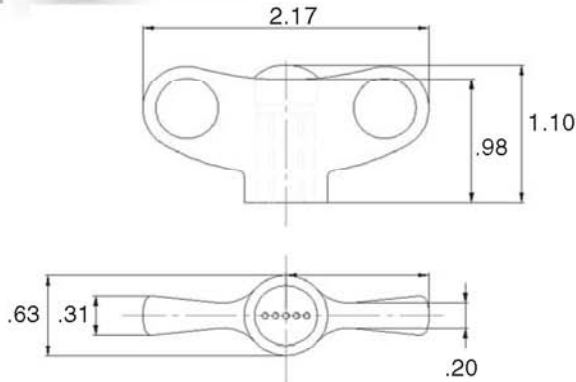
For additional fasteners and t-nuts see pages 300-303

## 10LM8422

"T" HANDLE BRAKE KIT



elesa



## LINEAR BRAKE KITS

ERGOSTYLE®  
Ergonomic Brake Handle!

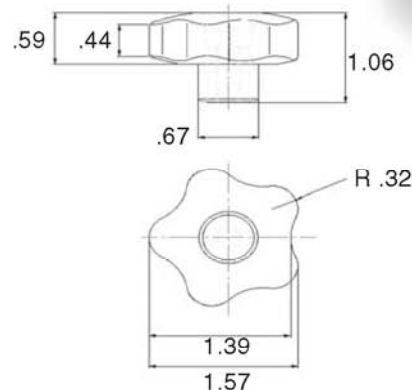
Hardware Included!  
(1/4-20 x 3/4" Carriage Bolt)

## 10LM8424

"STAR" HANDLE BRAKE KIT



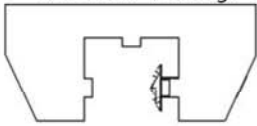
elesa



Tip on assembling  
linear brake kits  
on page 343

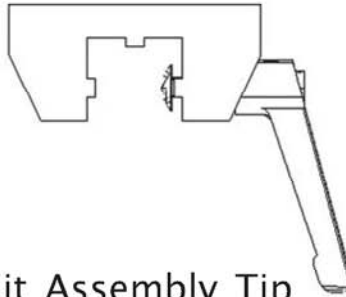
**Step 1**

Insert the carriage bolt through the brake hole of the linear bearing.

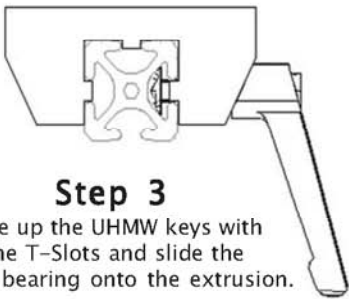


**Step 2**

Thread the brake handle onto the carriage bolt.

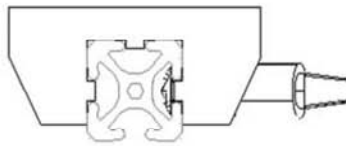


**Linear Bearing Brake Kit Assembly Tip**



**Step 3**

Line up the UHMW keys with the T-Slots and slide the linear bearing onto the extrusion.



**Step 4**

Adjust the position of the linear bearing and tighten the brake handle down.

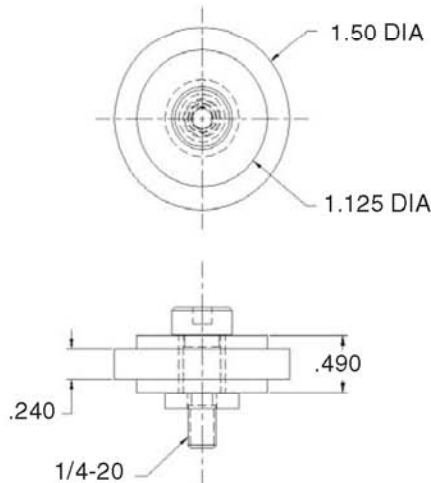


**10LM8404**

10 SERIES  
ROLLER WHEEL

**Hardware Included!**

- Self lubricating bronze bushing
- Made of high strength black nylatron



**IDEAL APPLICATIONS**

- Sliding Doors
- Moveable Gates

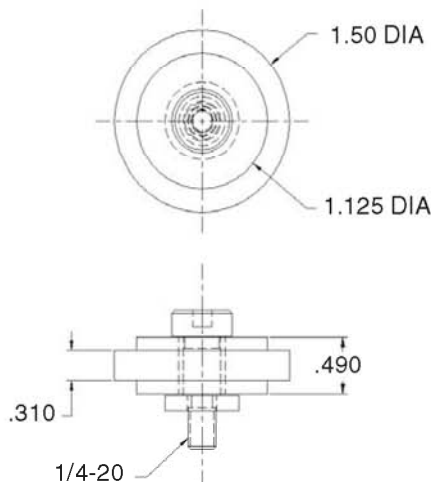
Linear Motion

**10LM8430**

10 SERIES  
UNIVERSAL ROLLER WHEEL

**Hardware Included!**

- Self lubricating bronze bushing
- Made of high strength black nylatron



**IDEAL APPLICATIONS**

- Sliding Doors
- Moveable Gates