

SECTION 16

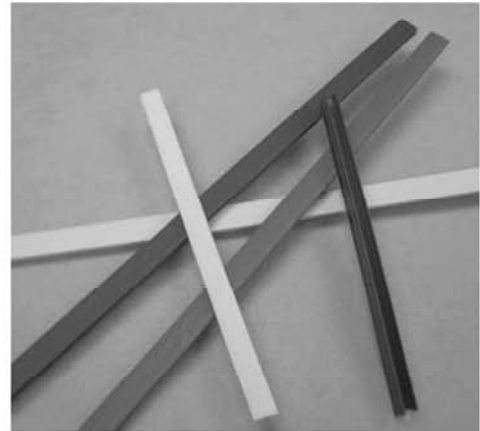
10 SERIES

ACCESSORIES

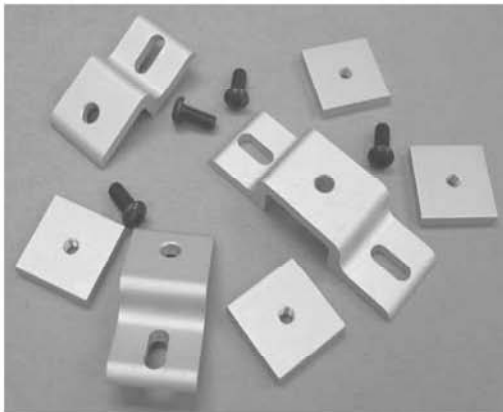
ENDCAPS



T-SLOT COVER, PANEL GASKET



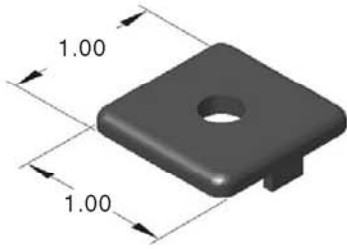
MESH / PANEL RETAINERS



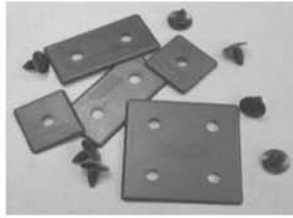
LATCHING MECHANISMS



10AC7730
10EX1010 END CAP



- PUSH IN FASTENERS INCLUDED
- MADE OF POLYPROPYLENE

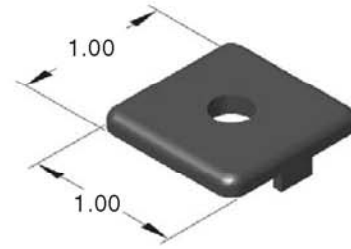


USE (1) 10EX1020 ENDCAP &
(1) 10EX1010 ENDCAP FOR
10EX1030



10AC7736
10 SERIES
PUSH IN FASTENER
(Replacement)

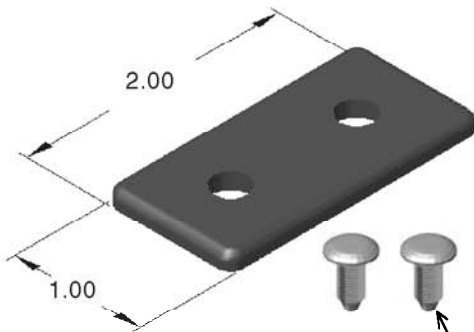
10AC7630
10EX1010 HEAVY DUTY END CAP



- 13FA3300 - 1/4-20 x 1/2 BHSCS INCLUDED
- TAPPING SERVICE ON PAGE 324



10AC7732
10EX1020 END CAP



- PUSH IN FASTENERS INCLUDED
- MADE OF POLYPROPYLENE

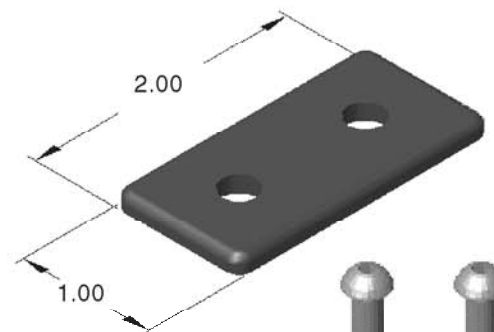


USE (1) 10EX1020 ENDCAP &
(1) 10EX1010 ENDCAP FOR
10EX1030



10AC7736
10 SERIES
PUSH IN FASTENER
(Replacement)

10AC7632
10EX1020 HEAVY DUTY END CAP

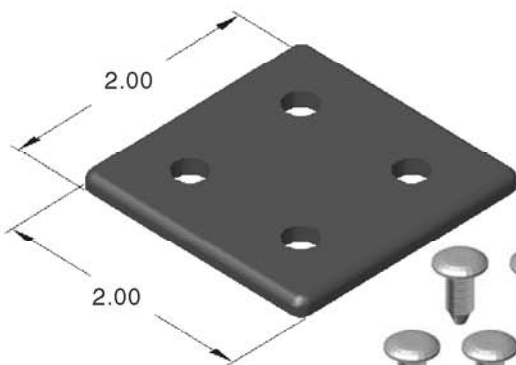


- 13FA3300 - 1/4-20 x 1/2 BHSCS INCLUDED
- TAPPING SERVICE ON PAGE 324



Accessories

10AC7734
10EX2020 END CAP



- PUSH IN FASTENERS INCLUDED
- MADE OF POLYPROPYLENE

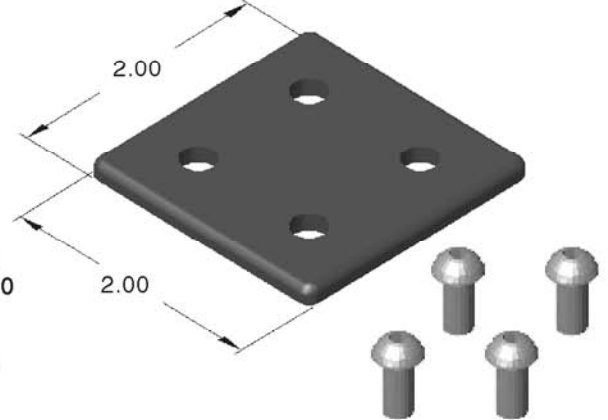


DOUBLE UP FOR
CAPPING 10EX2040



10AC7736
10 SERIES
PUSH IN FASTENER
(Replacement)

10AC7634
10EX2020 HEAVY DUTY END CAP



- 13FA3300 - 1/4-20 x 1/2 BHSCS INCLUDED
- TAPPING SERVICE ON PAGE 324

10 SERIES T-SLOT COVER

10AC7750
(YELLOW)

- PRESSES EASILY INTO SLOT
- A GREAT FINISH TO A PROJECT
- KEEPS T-SLOTS CLEAN

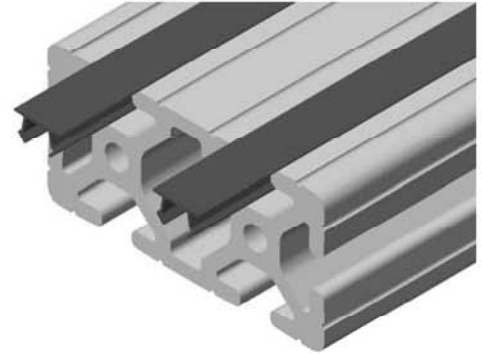
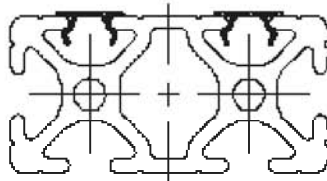
10AC7751
(BLACK)

T-Slot cover can be cut with a sharp utility knife, diagonal cutters, pruning shears, etc...

10AC7752
(BLUE)

STOCK LENGTH = 96.0"

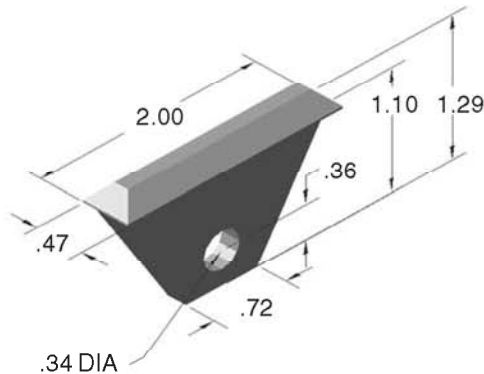
10AC7753
(GRAY)



10AC7760

10 SERIES TOOL HANGER

- GREAT FOR AIR TOOLS OR CABLE REELS
- HIGH STRENGTH BLACK NYLON
- 75 LB CAPACITY
- NO FASTENERS REQUIRED

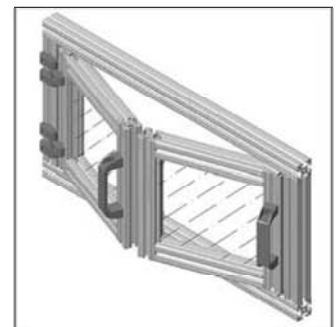
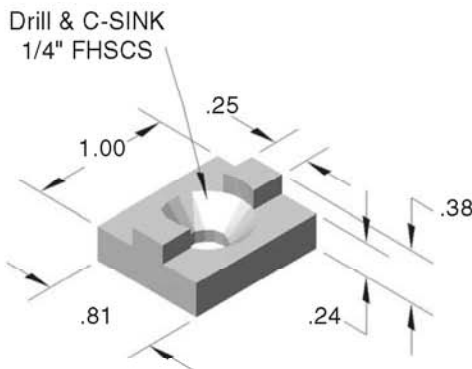


10AC7850

UHMW BI-FOLD DOOR GLIDE

Hardware Included!

- GREAT ALTERNATIVE TO SLIDING DOORS
- SAVES SPACE
- WHITE UHMW POLYETHYLENE



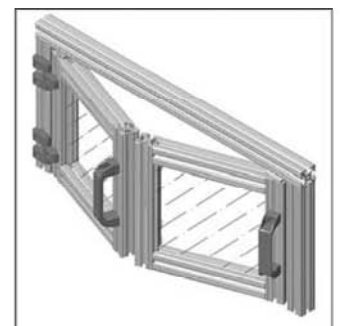
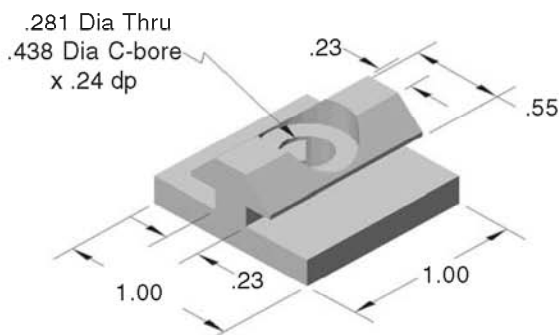
Bi-fold door calculator on page 34

10AC7855

UHMW HANGING BI-FOLD DOOR GLIDE

Hardware Included!

- GREAT ALTERNATIVE TO SLIDING DOORS
- SAVES SPACE
- WHITE UHMW POLYETHYLENE



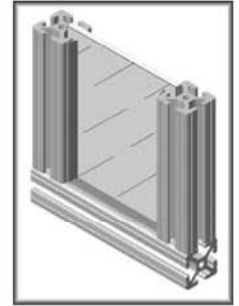
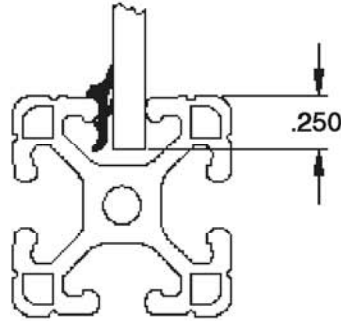
Bi-fold door calculator on page 34

10 SERIES RUBBER PANEL GASKET

10AC7800
(PER FOOT)

10AC7801
(250 FOOT ROLL)

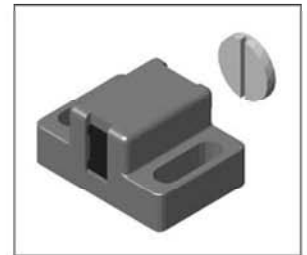
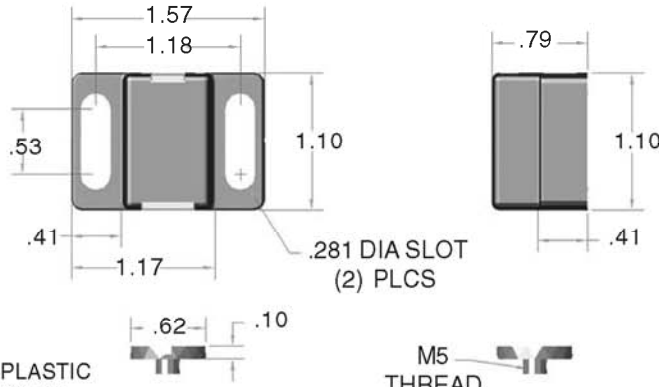
- HOLDS PANELS TIGHT
- RATTLE PROOF
- INSERTS AFTER PANEL IS INSTALLED
- BLACK SILICONE RUBBER



10AC7974

10 SERIES
MAGNETIC DOOR CATCH

Hardware
Included!

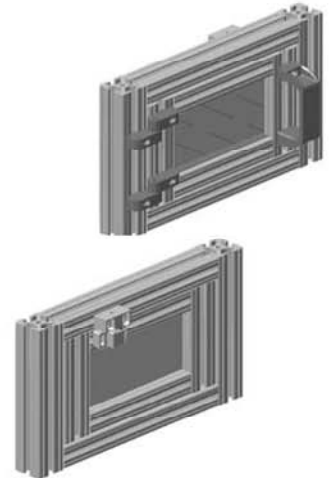
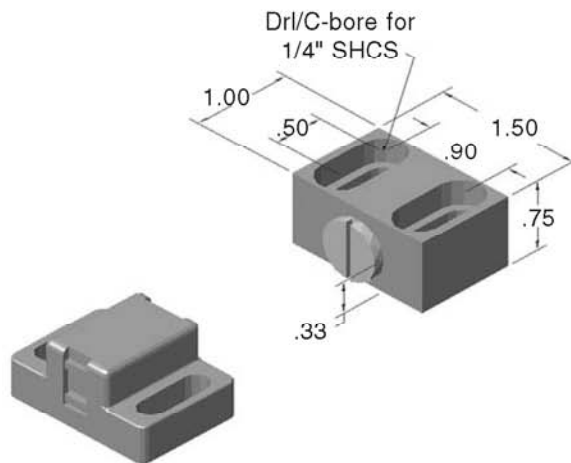


- QUICK LOCKING
- ADAPTABLE TO THE THICKNESS OF PLASTIC
- BLACK FIBERGLASS REINFORCED NYLON

10AC7976

10 SERIES
MAGNETIC DOOR CATCH ASSEMBLY

Hardware
Included!

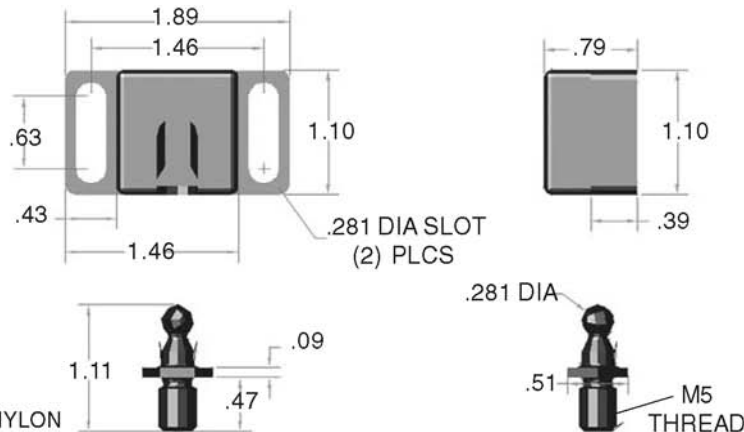


10AC7978

10 SERIES
BALL LATCH CATCH



Hardware
Included!

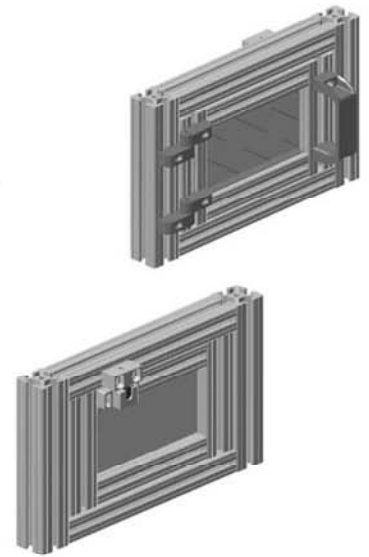
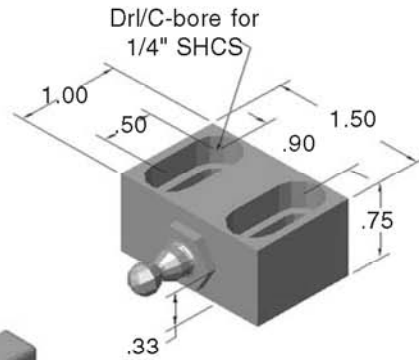
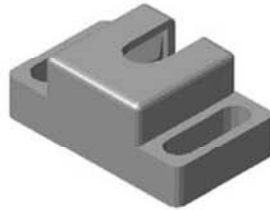


- STRONG LATCHING MECHANISM
- LATCH FROM TOP OR FRONT
- BLACK FIBERGLASS REINFORCED NYLON

10AC7980

10 SERIES
BALL LATCH CATCH ASSEMBLY

Hardware
Included!

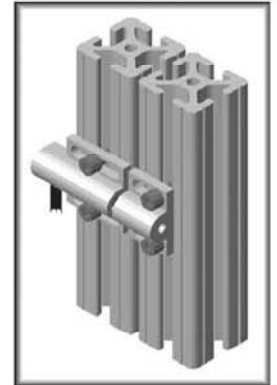
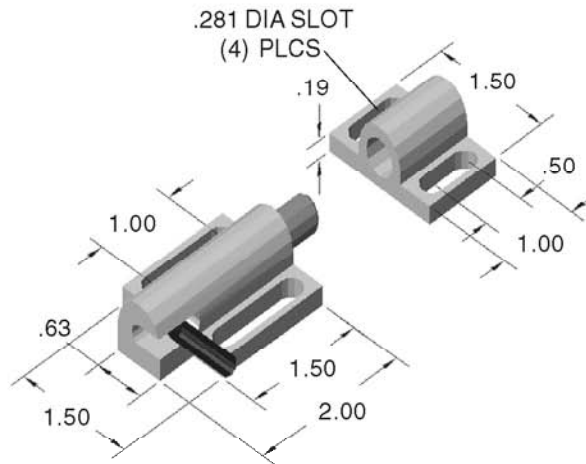


10AC7762

SIDE RELEASE DEADBOLT LATCH

Hardware
Included!

- STRONG LATCHING MECHANISM
- SPRING LOADED
- CHAMFER LEADS ON PARTS FOR EASY ALIGNMENT
- ALUMINUM W/ STEEL HARDWARE

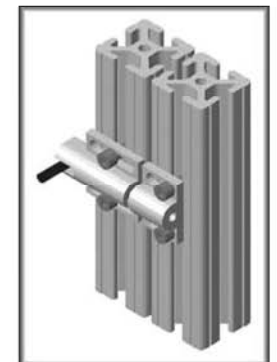
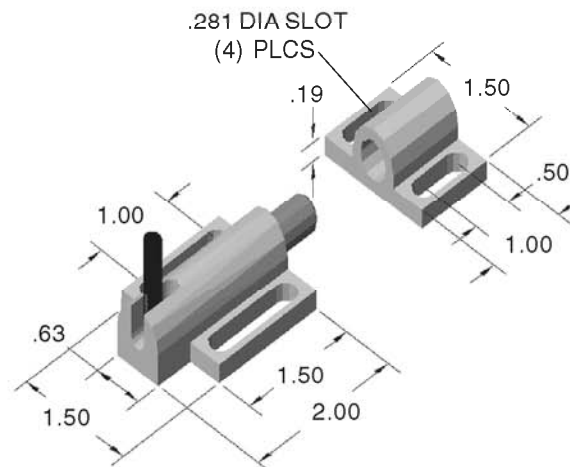


10AC7768

TOP RELEASE DEADBOLT LATCH

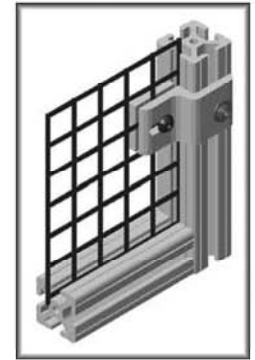
Hardware
Included!

- STRONG LATCHING MECHANISM
- SPRING LOADED
- CHAMFER LEADS ON PARTS FOR EASY ALIGNMENT
- ALUMINUM W/ STEEL HARDWARE



10AC7806

10 SERIES
1.0" MESH RETAINER ASSY



RECOMMENDED HARDWARE

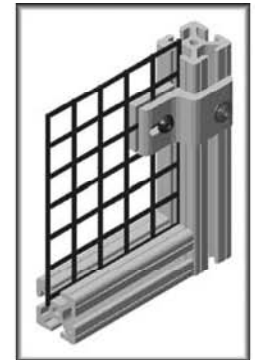
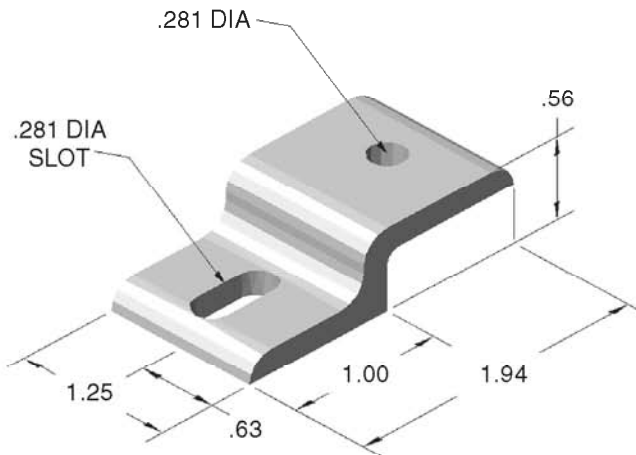
Qty	Description	Part Number
1	1/4-20 x 1/2 FBHSCS	13FA3309
1	1/4-20 ECONOMY T-NUT	10FA3121

For additional fasteners and t-nuts, see pages 300-303

- Assembly Tip -
Place mesh retainers every 24" to properly secure the material.

10AC7809

10 SERIES
1.0" MESH RETAINER



RECOMMENDED HARDWARE

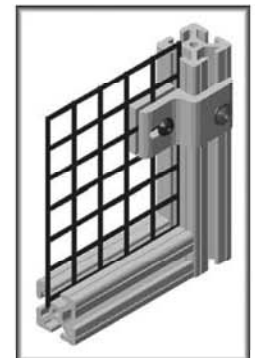
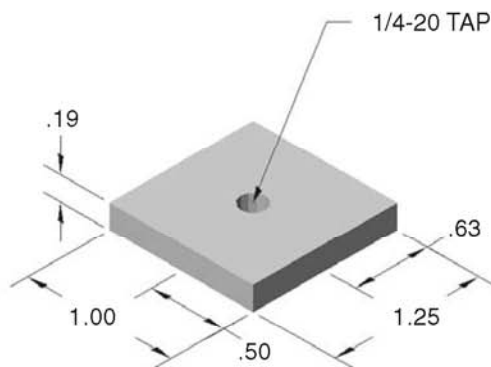
Qty	Description	Part Number
1	1/4-20 x 1/2 FBHSCS	13FA3309
1	1/4-20 ECONOMY T-NUT	10FA3121

For additional fasteners and t-nuts, see pages 300-303

Accessories

10AC7803

10 SERIES
1.0" BACKING PLATE



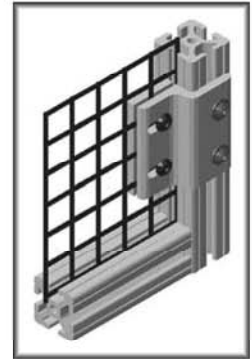
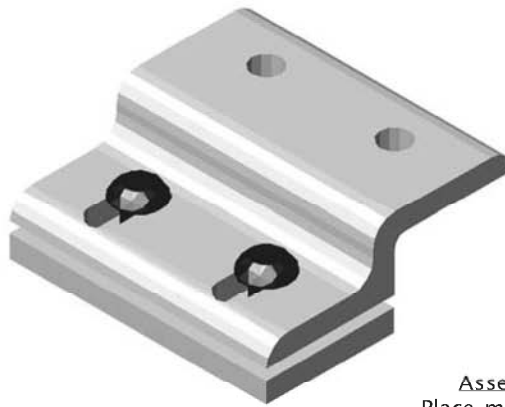
RECOMMENDED HARDWARE

Qty	Description	Part Number
1	1/4-20 x 5/8 BHSCS	13FA3301

For additional fasteners and t-nuts, see pages 300-303

10AC7817

10 SERIES
2.0" MESH RETAINER ASSY



RECOMMENDED HARDWARE

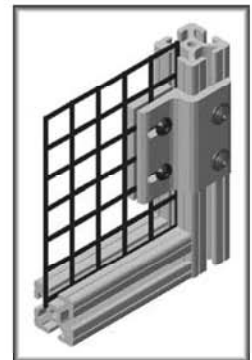
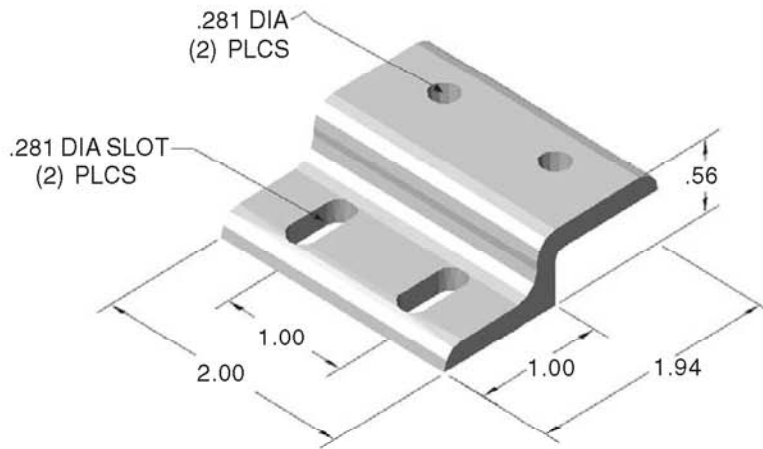
Qty	Description	Part Number
2	1/4-20 x 1/2 FBHSCS	13FA3309
1	1/4-20 DOUBLE T-NUT	10FA3122

Assembly Tip
Place mesh retainers every 24" to properly secure the material.

For additional fasteners and t-nuts, see pages 300-303

10AC7815

10 SERIES
2.0" MESH RETAINER



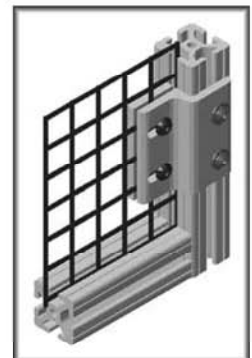
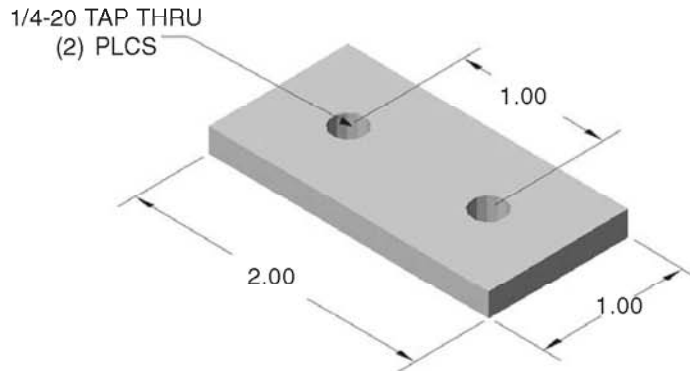
RECOMMENDED HARDWARE

Qty	Description	Part Number
2	1/4-20 x 1/2 FRHSCS	13FA3309
1	1/4-20 DOUBLE T-NUT	10FA3122

For additional fasteners and t-nuts, see pages 300-302

10AC7816

10 SERIES
2.0" BACKING PLATE



RECOMMENDED HARDWARE

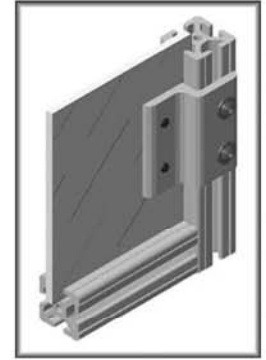
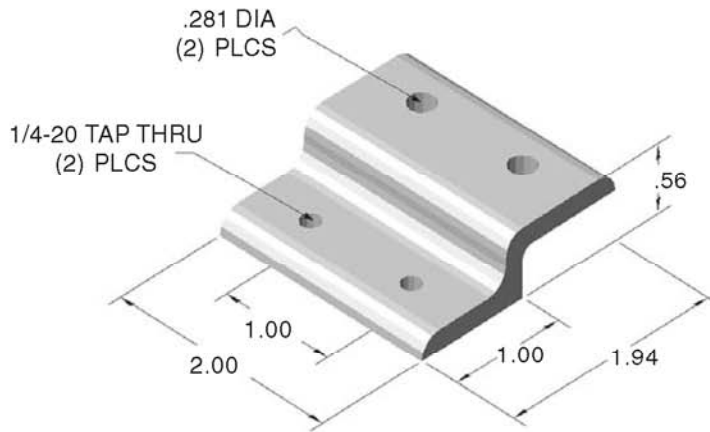
Qty	Description	Part Number
2	1/4-20 x 5/8 BHSCS	13FA3301

For additional fasteners and t-nuts, see pages 300-303

10AC7814

10 SERIES
2.0" PANEL RETAINER

- Quick Panel Removal
- Strong Panel Fastening Method



RECOMMENDED HARDWARE

Qty	Description	Part Number
4	1/4-20 x 1/2 FBHSCS	13FA3309
1	1/4-20 DOUBLE T-NUT	10FA3122

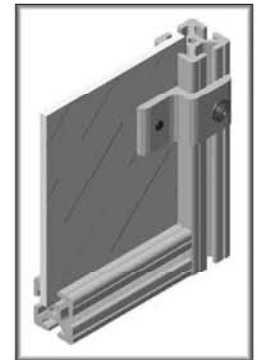
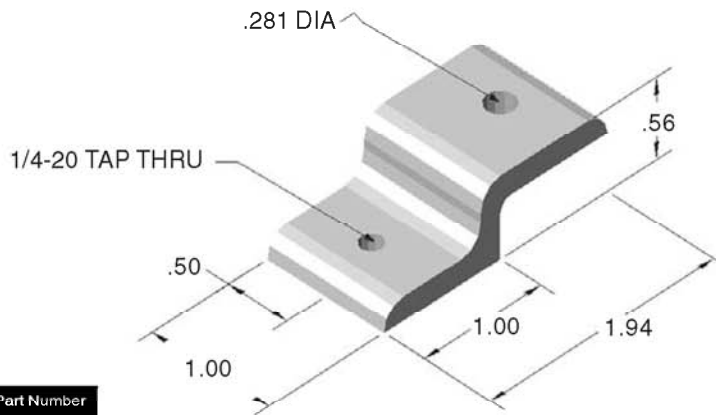
For additional fasteners and t-nuts, see pages 300-303

Assembly Tip
Place panel retainers every 24" to properly secure the material.

10AC7810

10 SERIES
1.0" PANEL RETAINER

- Quick Panel Removal
- Strong Panel Fastening Method



Accessories

RECOMMENDED HARDWARE

Qty	Description	Part Number
2	1/4-20 x 1/2 FBHSCS	13FA3309
1	1/4-20 ECONOMY T-NUT	10FA3121

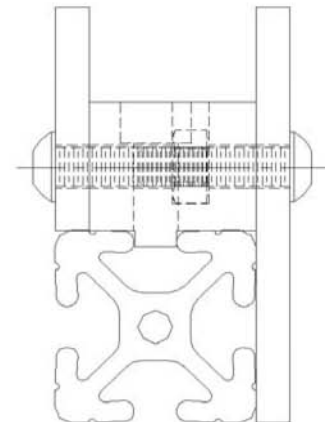
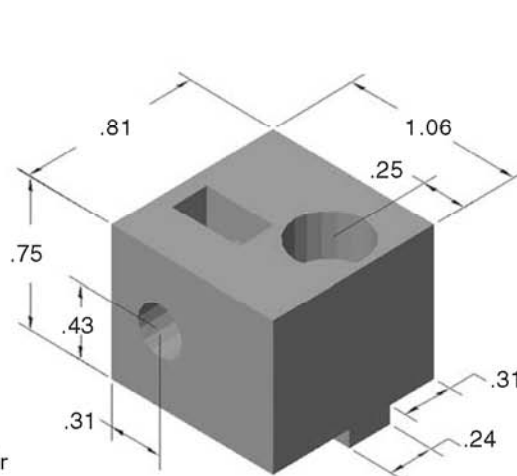
For additional fasteners and t-nuts, see pages 300-303

Assembly Tip
Place panel retainers every 24" to properly secure the material.
















10AC7805

10 SERIES
PANEL MOUNT BLOCK

- Bolt kit included for extrusion mountir
- Black high strength nylon
- Used for flush or surface panel mounting
- Economical

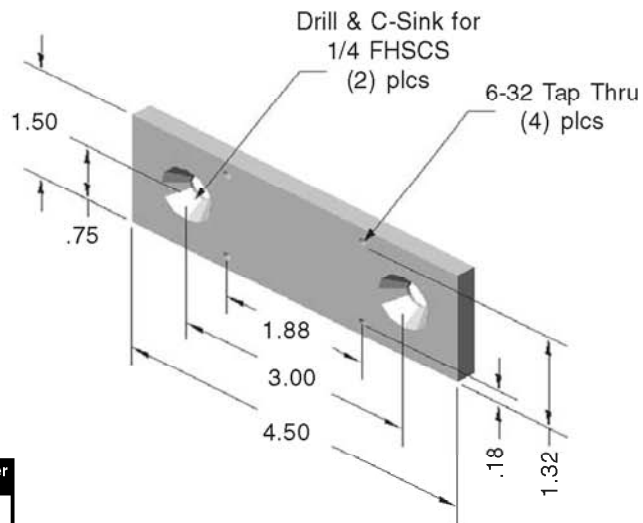


Grabber Catch Assemblies Components

		 13AC7380	 13AC7382	 13AC7384	 15AC7975	 10AC7775	 13AC7392
A S S E M B L I E S	 13AC7393	1			1		
	 13AC7394		1		1		
	 13AC7395			1	1		
	 13AC7396	1				1	
	 13AC7397		1			1	
	 13AC7398			1		1	
	 13AC7400	1					1
	 13AC7401		1				1
	 13AC7402			1			1

10AC7775

10 SERIES
KEEPER PANEL MOUNT PLATE



RECOMMENDED HARDWARE

Qty	Description	Part Number
2	1/4-20 x 1/2 FHSCS	13FA3110
2	1/4-20 ECONOMY T-NUT	10FA3121

For additional fasteners and t-nuts, see pages 300-303

STANDARD DOOR HANDLES

10AC7950

LOCKING CHROME DOOR HANDLE
(360° ROTATION)

10AC7953

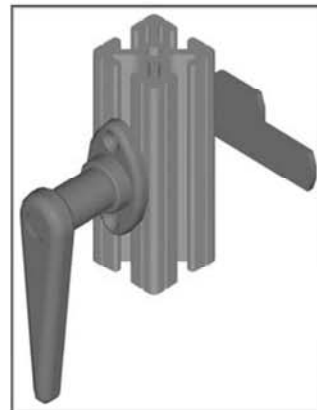
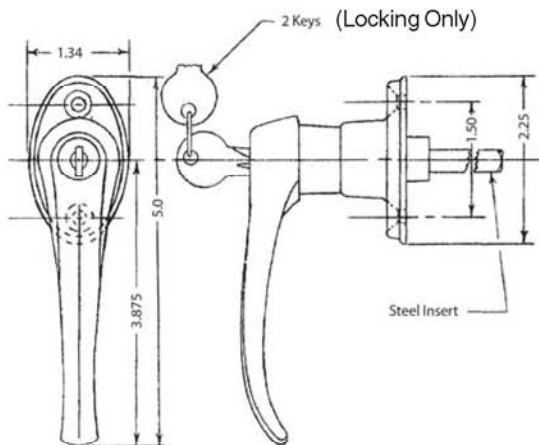
NON-LOCKING CHROME DOOR HANDLE
(360° ROTATION)

10AC7955

LOCKING BLACK DOOR HANDLE
(360° ROTATION)

10AC7957

NON-LOCKING BLACK DOOR HANDLE
(360° ROTATION)



- Door latch machining service on page 329

Hardware
Included!

Accessories

