

# SECTION 13

## 10/13 SERIES

### - FRACTIONAL, METRIC, AND UNIVERSAL HARDWARE -

**BOLTS, WASHERS,  
HEX NUTS**



**T-NUTS: ECONOMY,  
STANDARD, DROP-IN**



**ANCHOR / BUTT  
FASTENERS**

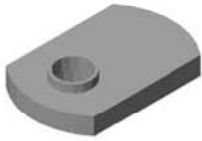


**END FASTENERS**



# 10 SERIES T-NUTS

## ECONOMYT-NUT



- Low cost, high strength

## DROP-IN T-NUT W/ SET SCREW



- High strength
- Easy to add or reposition
- Secures for fast assembly
- Extra thread engagement
- Use a 1/16" hex wrench to tighten the set screw

## DOUBLE ECONOMYT-NUT



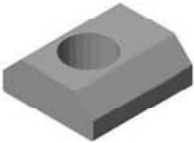
- Low cost, high strength
- Fast assembly for plates
- 1.0" center lines

## DROP-IN T-NUT



- High strength
- Flexible handle
- Easy to add
- Extra thread engagement
- Rubber nub can be used as a friction point

## STANDARD T-NUT



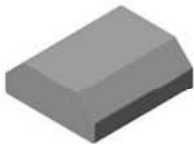
- Low cost, high strength
- Extra thread engagement

## DROP-IN T-NUT W/ ALIGNMENT BALL



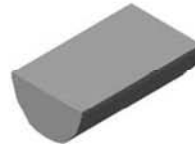
- High strength
- Easy to add or reposition
- Extra thread engagement
- Spring loaded ball
- Secures for fast assembly

## STANDARD T-NUT BLANK PROFILE



- High strength
- Unlimited opportunities
- Machine it your way

## DROP-IN T-NUT BLANK PROFILE



- High strength
- Unlimited opportunities
- Machine it your way



Rubber Handle

Alignment Ball

Set Screw

Standard

Economy



Fasteners

# 10 SERIES T-NUT CHART

PART #	1/4-20	WIDTH	FINISH	TAP LOCATION	MATERIAL TYPE
10FA3121	ECONOMY T-NUT	.440	BLACK ZINC	CENTERED	LOW CARBON STEEL
10FA3122	DOUBLE ECONOMY T-NUT	.440	BLACK ZINC	CENTERED	LOW CARBON STEEL
10FA3123	STANDARD T-NUT	.425	BLACK ZINC	OFFSET	12L14 CARBON STEEL
10FA3124	DROP-IN T-NUT	.390	BLACK ZINC	OFFSET	12L14 CARBON STEEL
10FA3125	DROP-IN T-NUT W/ SET SCREW	.390	BLACK ZINC	OFFSET	12L14 CARBON STEEL
10FA3126	DROP-IN T-NUT W/ ALIGNMENT BALL	.390	BLACK ZINC	OFFSET	12L14 CARBON STEEL
PART #	10-32	WIDTH	FINISH	TAP LOCATION	MATERIAL TYPE
10FA3101	ECONOMY T-NUT	.440	BLACK ZINC	CENTERED	LOW CARBON STEEL
10FA3102	STANDARD T-NUT	.425	BLACK ZINC	OFFSET	12L14 CARBON STEEL
10FA3103	DROP-IN T-NUT	.390	BLACK ZINC	OFFSET	LOW CARBON STEEL
10FA3104	DROP-IN T-NUT W/ SET SCREW	.390	BLACK ZINC	OFFSET	12L14 CARBON STEEL
25FA3130	DROP-IN T-NUT W/ ALIGNMENT BALL	.390	BLACK ZINC	OFFSET	12L14 CARBON STEEL
PART #	8-32	WIDTH	FINISH	TAP LOCATION	MATERIAL TYPE
10FA3100	ECONOMY T-NUT	.440	BLACK ZINC	CENTERED	LOW CARBON STEEL
PART #	M6 x 1.00	WIDTH	FINISH	TAP LOCATION	MATERIAL TYPE
10MFA3201	ECONOMY T-NUT	.440	BRIGHT ZINC	CENTERED	LOW CARBON STEEL
10MFA3202	STANDARD T-NUT	.425	BRIGHT ZINC	OFFSET	12L14 CARBON STEEL
10MFA3203	DROP-IN T-NUT	.390	BRIGHT ZINC	OFFSET	12L14 CARBON STEEL
10MFA3125	DROP-IN T-NUT W/ALIGNMENT BALL	.390	BRIGHT ZINC	OFFSET	12L14 CARBON STEEL
PART #	M5 x .80	WIDTH	FINISH	TAP LOCATION	MATERIAL TYPE
10MFA3925	STANDARD T-NUT	.425	BRIGHT ZINC	OFFSET	12L14 CARBON STEEL
25MFA3244	ECONOMY T-NUT	.440	BRIGHT ZINC	CENTERED	LOW CARBON STEEL
25MFA3246	DROP-IN T-NUT W/ ALIGNMENT BALL	.390	BRIGHT ZINC	OFFSET	12L14 CARBON STEEL
PART #	BLANK T-NUT PROFILE	WIDTH	FINISH	TAP LOCATION	MATERIAL TYPE
10SS7005	STANDARD T-NUT BLANK	.425	PLAIN	N/A	12L14 CARBON STEEL
10SS7006	DROP-IN T-NUT BLANK	.390	PLAIN	N/A	12L14 CARBON STEEL
10SS7030	STANDARD T-NUT PROFILE - PER INCH	.425	PLAIN	N/A	12L14 CARBON STEEL
25MFA3246	STANDARD PROFILE BAR - 24"	.425	PLAIN	N/A	12L14 CARBON STEEL



## UNIVERSAL FASTENER CHARTS 5/16-18 FRACTIONAL (SAE) SIZES

5/16-18 SOCKET HEAD CAP SCREW (SHCS)			
PART #	DESCRIPTION	FINISH	TOOL
13FA3337	5/16-18 x 1/2 SHCS	BLACK ZINC	1/4 HEX
13FA3325	5/16-18 x 5/8 SHCS	BLACK ZINC	1/4 HEX
13FA3326	5/16-18 x 3/4 SHCS	BLACK ZINC	1/4 HEX
13FA3327	5/16-18 x 7/8 SHCS	BLACK ZINC	1/4 HEX
13FA3335	5/16-18 x 1 SHCS	BLACK ZINC	1/4 HEX
13FA3328	5/16-18 x 1-1/4 SHCS	BLACK ZINC	1/4 HEX
13FA3329	5/16-18 x 1-1/2 SHCS	BLACK ZINC	1/4 HEX
13FA3609	5/16-18 x 1-1/4 SHCS	STAINLESS	1/4 HEX

5/16-18 BUTTON HEAD SOCKET CAP SCREW (BHS CS)			
PART #	DESCRIPTION	FINISH	TOOL
13FA3321	5/16-18 x 1/2 BSHCS	BLACK ZINC	3/16 HEX
13FA3322	5/16-18 x 5/8 BSHCS	BLACK ZINC	3/16 HEX
13FA3323	5/16-18 x 3/4 BSHCS	BLACK ZINC	3/16 HEX
13FA3324	5/16-18 x 1 BSHCS	BLACK ZINC	3/16 HEX
13FA3600	5/16-18 x 1/2 BSHCS	STAINLESS	3/16 HEX
13FA3602	5/16-18 x 5/8 BSHCS	STAINLESS	3/16 HEX
13FA3604	5/16-18 x 1 BSHCS	STAINLESS	3/16 HEX

5/16-18 LOW HEAD SOCKET CAP SCREW (LHSCS)			
PART #	DESCRIPTION	FINISH	TOOL
13FA3354	5/16-18 x 5/8 LHSCS	BLACK ZINC	3/16 HEX
13FA3710	5/16-18 x 1-1/4 LHSCS	BLACK ZINC	3/16 HEX

5/16-18 FLANGED BUTTON HEAD CAP SCREW (FBHSCS)			
PART #	DESCRIPTION	FINISH	TOOL
13FA3330	5/16-18 x 1/2 FBHSCS	BLACK ZINC	3/16 HEX
13FA3331	5/16-18 x 5/8 FBHSCS	BLACK ZINC	3/16 HEX

5/16-18 DROP-IN T-BOLTS			
PART #	DESCRIPTION	FINISH	TOOL
13FA3720	5/16-18 x 3/4 T-BOLT	BLACK ZINC	N/A
13FA3721	5/16-18 x 1 T-BOLT	BLACK ZINC	N/A
13FA3722	5/16-18 x 1-1/4 T-BOLT	BLACK ZINC	N/A
13FA3723	5/16-18 x 1 -1/2 T-BOLT	BLACK ZINC	N/A

5/16-18 CARRIAGE BOLTS			
PART #	DESCRIPTION	FINISH	TOOL
13FA3708	5/16-18 x 1 C-BOLT	BLACK ZINC	N/A
13FA3612	5/16-18 x 1 C-BOLT	STAINLESS	N/A

5/16-18 FLAT HEAD SOCKET CAP SCREW (FHSCS)			
PART #	DESCRIPTION	FINISH	TOOL
13FA3353	5/16-18 x 5/8 FHSCS	BLACK ZINC	3/16 HEX
13FA3342	5/16-18 x 3/4 FHSCS	BLACK ZINC	3/16 HEX

## 1/4-20 FRACTIONAL (SAE) SIZES

1/4-20 SOCKET HEAD CAP SCREW (SHCS)			
PART #	DESCRIPTION	FINISH	TOOL
13FA3303	1/4-20 x 1/2 SHCS	BLACK ZINC	3/16 HEX
13FA3304	1/4-20 x 5/8 SHCS	BLACK ZINC	3/16 HEX
13FA3305	1/4-20 x 3/4 SHCS	BLACK ZINC	3/16 HEX
13FA3311	1/4-20 x 7/8 SHCS	BLACK ZINC	3/16 HEX
13FA3306	1/4-20 x 1 SHCS	BLACK ZINC	3/16 HEX

1/4-20 BUTTON HEAD SOCKET CAP SCREW (BHS CS)			
PART #	DESCRIPTION	FINISH	TOOL
13FA3300	1/4-20 x 1/2 BSHCS	BLACK ZINC	5/32 HEX
13FA3301	1/4-20 x 5/8 BSHCS	BLACK ZINC	5/32 HEX
13FA3302	1/4-20 x 3/4 BSHCS	BLACK ZINC	5/32 HEX
13FA3336	1/4-20 x 1 BSHCS	BLACK ZINC	5/32 HEX
13FA3605	1/4-20 x 1/2 BSHCS	STAINLESS	5/32 HEX
13FA3606	1/4-20 x 3/4 BSHCS	STAINLESS	5/32 HEX

1/4-20 FLANGED BUTTON HEAD SOCKET CAP SCREW (FBHSCS)			
PART #	DESCRIPTION	FINISH	TOOL
13FA3308	1/4-20 x 3/8 FBHSCS	BLACK ZINC	3/16 HEX
13FA3309	1/4-20 x 1/2 FBHSCS	BLACK ZINC	3/16 HEX
13FA3310	1/4-20 x 3/4 FBHSCS	BLACK ZINC	3/16 HEX

1/4-20 LOW HEAD SOCKET CAP SCREW (LHSCS)			
PART #	DESCRIPTION	FINISH	TOOL
13FA3360	1/4-20 x 1/2 LHSCS	BLACK ZINC	5/32 HEX
13FA3362	1/4-20 x 1 LHSCS	BLACK ZINC	5/32 HEX

1/4-20 FLAT HEAD SOCKET CAP SCREW (FHSCS)			
PART #	DESCRIPTION	FINISH	TOOL
13FA3110	1/4-20 x 1/2 FHSCS	BLACK ZINC	5/32 HEX
13FA3111	1/4-20 x 5/8 FHSCS	BLACK ZINC	5/32 HEX
13FA3126	1/4-20 x 7/8 FHSCS	BLACK ZINC	5/32 HEX
13FA3127	1/4-20 x 1 FHSCS	BLACK ZINC	5/32 HEX

1/4-20 CARRIAGE BOLTS			
PART #	DESCRIPTION	FINISH	TOOL
13FA3709	1/4-20 x 3/4 C-BOLT	BLACK ZINC	N/A

## UNIVERSAL FASTENER CHARTS

### 3/8-16 FRACTIONAL (SAE) SIZES

3/8-16 SOCKET HEAD CAP SCREW (SHCS)			
PART #	DESCRIPTION	FINISH	TOOL
13FA3340	3/8-16 x 3/4 SHCS	BLACK ZINC	5/16 HEX

### 1/2-13 FRACTIONAL (SAE) SIZES

1/2-13 BUTTON HEAD SOCKET CAP SCREW (BHSCS)			
PART #	DESCRIPTION	FINISH	TOOL
13FA3338	1/2-13 x 3/4 BHSCS	BLACK ZINC	5/16 HEX

### 10-32 FRACTIONAL (SAE) SIZES

10-32 SOCKET HEAD CAP SCREW (SHCS)			
PART #	DESCRIPTION	FINISH	TOOL
13FA3347	10-32 x 3/8 SHCS	BLACK ZINC	5/32 HEX
13FA3350	10-32 x 1/2 SHCS	BLACK ZINC	5/32 HEX
13FA3351	10-32 x 5/8 SHCS	BLACK ZINC	5/32 HEX
13FA3352	10-32 x 3/4 SHCS	BLACK ZINC	5/32 HEX
13FA3607	10-32 x 3/4 SHCS	STAINLESS	5/32 HEX

10-32 BUTTON HEAD SOCKET CAP SCREW (BHSCS)			
PART #	DESCRIPTION	FINISH	TOOL
13FA3316	10-32 x 3/8 BHSCS	BLACK ZINC	5/32 HEX
13FA3128	10-32 x 1/2 BHSCS	BLACK ZINC	5/32 HEX
13FA3129	10-32 x 5/8 BHSCS	BLACK ZINC	5/32 HEX

10-32 FLAT HEAD SOCKET CAP SCREW (FHSCS)			
PART #	DESCRIPTION	FINISH	TOOL
13FA3117	10-32 x 1/2 FHSCS	BLACK ZINC	5/32 HEX

### FRACTIONAL (SAE) SIZES (WASHERS / HEX NUTS)

FLAT WASHERS			
PART #	DESCRIPTION	FINISH	TOOL
13FA3700	5/16" x .062"	BLACK ZINC	N/A
13FA3704	5/16" x .125"	BLACK ZINC	N/A
13FA3609	5/16" x .062"	STAINLESS	N/A
13FA3701	1/4" x .062"	BLACK ZINC	N/A
13FA3712	1/4" x .125"	BLACK ZINC	N/A
13FA3608	1/4" x .062"	STAINLESS	N/A

HEX NUTS			
PART #	DESCRIPTION	FINISH	TOOL
13FA3113	5/16-18	BLACK ZINC	N/A
13FA3112	5/16-18	BLACK ZINC	N/A
13FA3611	1/4-20	STAINLESS	N/A
13FA3610	1/4-20	STAINLESS	N/A



FOR BONDHUS HEX  
WRENCHES, SEE PAGE 254



## UNIVERSAL FASTENER CHARTS

### M8 x 1.25 METRIC SIZES

M8 x 1.25 SOCKET HEAD CAP SCREW (SHCS)			
PART #	DESCRIPTION	FINISH	TOOL
13MFA3649	M8 x 12 SHCS	BRIGHT ZINC	M6 HEX
13MFA3650	M8 x 14 SHCS	BRIGHT ZINC	M5 HEX
13MFA3651	M8 x 16 SHCS	BRIGHT ZINC	M5 HEX
13MFA3609	M8 x 20 SHCS	BRIGHT ZINC	M5 HEX
13MFA3652	M8 x 25 SHCS	BRIGHT ZINC	M5 HEX
13MFA3610	M8 x 30 SHCS	BRIGHT ZINC	M5 HEX
13MFA3653	M8 x 40 SHCS	BRIGHT ZINC	M5 HEX
13MFA3654	M8 x 50 SHCS	BRIGHT ZINC	M5 HEX

M8 x 1.25 BUTTON HEAD SOCKET CAP SCREW (BHSCS)			
PART #	DESCRIPTION	FINISH	TOOL
13MFA3607	M8 x 12 BHSCS	BRIGHT ZINC	M5 HEX
13MFA3655	M8 x 14 BHSCS	BRIGHT ZINC	M5 HEX
13MFA3613	M8 x 16 BHSCS	BRIGHT ZINC	M5 HEX
13MFA3615	M8 x 20 BHSCS	BRIGHT ZINC	M5 HEX
13MFA3608	M8 x 25 BHSCS	BRIGHT ZINC	M5 HEX
13MFA3656	M8 x 40 BHSCS	BRIGHT ZINC	M5 HEX
13MFA3657	M8 x 50 BHSCS	BRIGHT ZINC	M5 HEX

M8 x 1.25 CARRIAGE BOLT			
PART #	DESCRIPTION	FINISH	TOOL
13MFA3614	M8 x 25 C-BOLT	BRIGHT ZINC	N/A

### M6 x 1.0 METRIC SIZES

M6 x 1.0 SOCKET HEAD CAP SCREW (SHCS)			
PART #	DESCRIPTION	FINISH	TOOL
13MFA3600	M6 x 12 SHCS	BRIGHT ZINC	M5 HEX
13MFA3602	M6 x 16 SHCS	BRIGHT ZINC	M5 HEX
13MFA3618	M6 x 20 SHCS	BRIGHT ZINC	M5 HEX
13MFA3606	M6 x 22 SHCS	BRIGHT ZINC	M5 HEX
13MFA3646	M6 x 25 SHCS	BRIGHT ZINC	M5 HEX

M6 x 1.0 CARRIAGE BOLT			
PART #	DESCRIPTION	FINISH	TOOL
13MFA3611	M6 x 20 C-BOLT	BRIGHT ZINC	N/A

M6 x 1.0 BUTTON HEAD SOCKET CAP SCREW (BHSCS)			
PART #	DESCRIPTION	FINISH	TOOL
13MFA3621	M6 x 10 BHSCS	BRIGHT ZINC	M5 HEX
13MFA3605	M6 x 12 BHSCS	BRIGHT ZINC	M5 HEX
13MFA3624	M6 x 14 BHSCS	BRIGHT ZINC	M5 HEX
13MFA3647	M6 x 16 BHSCS	BRIGHT ZINC	M5 HEX
13MFA3612	M6 x 20 BHSCS	BRIGHT ZINC	M5 HEX
13MFA3648	M6 x 25 BHSCS	BRIGHT ZINC	M5 HEX



FOR BONDHUS HEX  
WRENCHES, SEE PAGE 254

### M5 x .8 METRIC SIZES

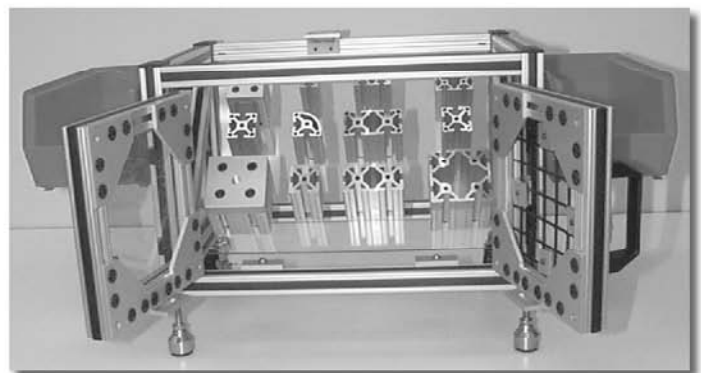
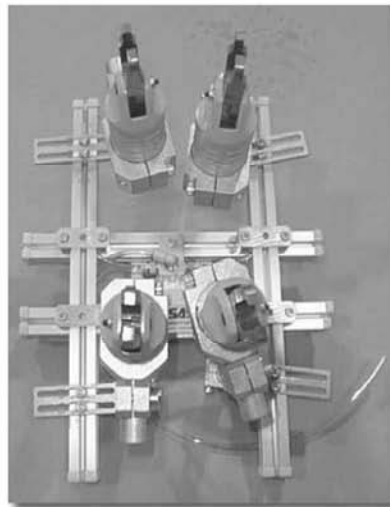
M5 x .8 SOCKET HEAD CAP SCREW (SHCS)			
PART #	DESCRIPTION	FINISH	TOOL
13MFA3640	M5 x 8 SHCS	BRIGHT ZINC	M5 HEX
13MFA3641	M5 x 12 SHCS	BRIGHT ZINC	M5 HEX
13MFA3642	M5 x 16 SHCS	BRIGHT ZINC	M5 HEX
13MFA3619	M5 x 20 SHCS	BRIGHT ZINC	M5 HEX

M5 x .8 BUTTON HEAD SOCKET CAP SCREW (BHSCS)			
PART #	DESCRIPTION	FINISH	TOOL
13MFA3643	M5 x 8 BHSCS	BRIGHT ZINC	M5 HEX
13MFA3644	M5 x 12 BHSCS	BRIGHT ZINC	M5 HEX
13MFA3645	M5 x 16 BHSCS	BRIGHT ZINC	M5 HEX

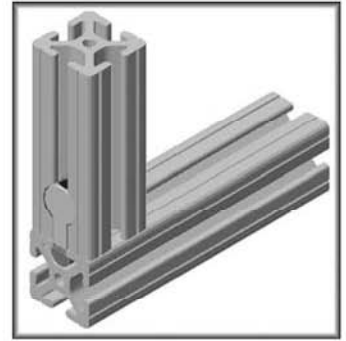
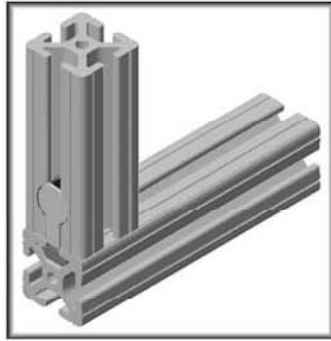
### METRIC SIZES (WASHERS / HEX NUTS)

FLAT WASHERS			
PART #	DESCRIPTION	FINISH	TOOL
13MFA3622	M8 x 1.58	BRIGHT ZINC	N/A
13MFA3620	M6 x 1.58	BRIGHT ZINC	N/A

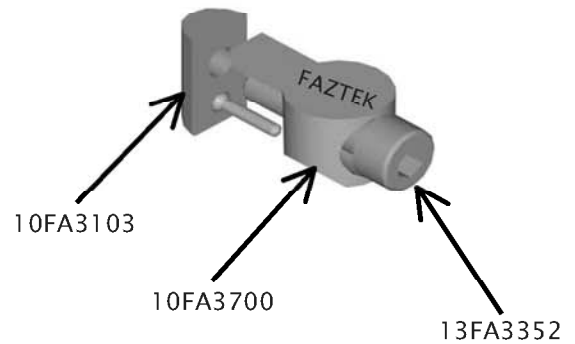
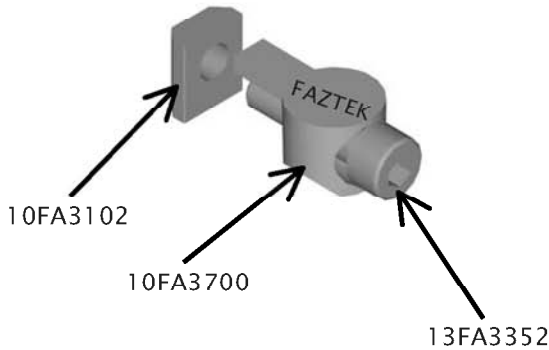
HEX NUTS			
PART #	DESCRIPTION	FINISH	TOOL
13MFA3617	M8 x 1.25	BRIGHT ZINC	N/A
13MFA3616	M6 x 1.0	BRIGHT ZINC	N/A



# 10 SERIES ANCHOR FASTENERS



Fasteners



### COMBO PART # 10FAC3750

ANCHOR FASTENER W/ STANDARD T-NUT	
10FA3102	10-32 STANDARD T-NUT
13FA3352	10-32 x 3/4 SHCS
10FA3700	10 SERIES ANCHOR BODY

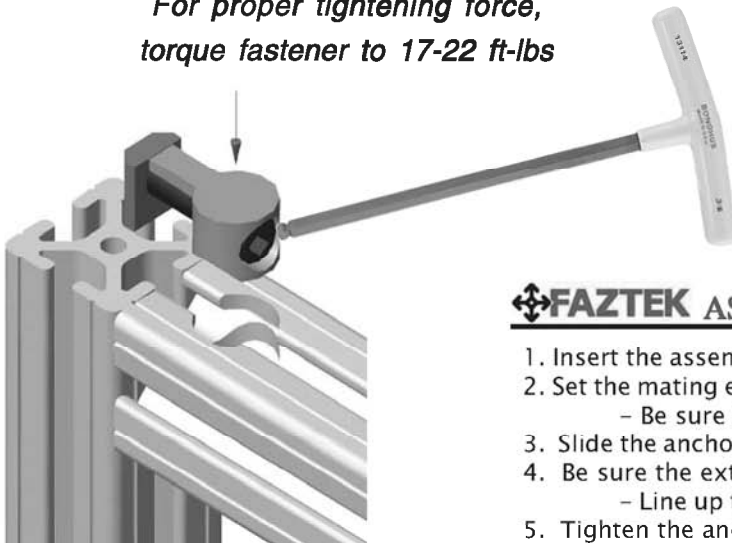
\* For 10 series counterbore service, see page 325

### COMBO PART # 10FAC3758

ANCHOR FASTENER W/ DROP-IN T-NUT	
10FA3103	10-32 DROP-IN T-NUT
13FA3352	10-32 x 3/4 SHCS
10FA3700	10 SERIES ANCHOR BODY

\* For 10 series counterbore service, see page 325

*For proper tightening force,  
torque fastener to 17-22 ft-lbs*



- STRONGEST CONNECTOR
- EASY POSITIONING
- **MOST** COST EFFECTIVE FASTENER
- INFINITE ADJUSTABILITY
- MADE OF ZINC DIE CASTING
- CORROSION RESISTANT FINISH
- FAST ASSEMBLY

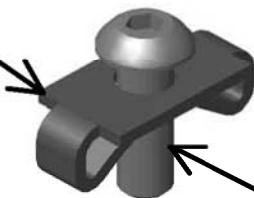
### **FAZTEK ASSEMBLY TIP**

1. Insert the assembled anchor fastener into the T-Slot.
2. Set the mating extrusion 90° to the joining slot.
  - Be sure the counterbore is oriented properly -
3. Slide the anchor fastener into the counterbore of the mating extrusion.
4. Be sure the extrusions are squared up.
  - Line up the grooves in the extrusions -
5. Tighten the anchor fastener with a 3/16" "T" Handle Ball End Hex Wrench.
  - Found on page 254 -



## 10 SERIES END FASTENERS

10FA3705  
(BLACK ZINC)



13FA3302



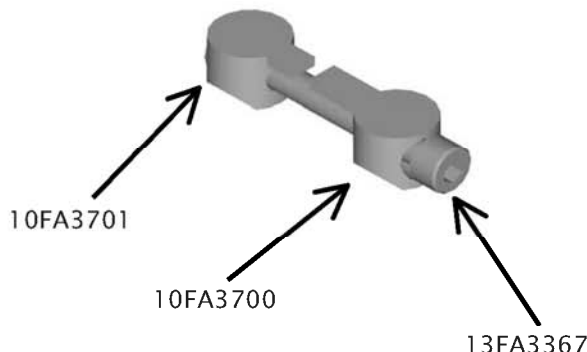
**FRACTIONAL END FASTENER ASSEMBLY**

10FA3705	10 SERIES END FASTENER CLIP
13FA3302	1/4-20 x 3/4 BHSCS

## 10 SERIES BUTT FASTENERS



- Allows you to draw 2 extrusions together tight, creating virtually one long extrusion
- Strong connector
- Uses same counterbore service as the anchor fastener



COMBO PART # 10FAC3757

**BUTT-FASTENER ASSEMBLY**

10FA3701	10 SERIES ANCHOR CAM (MOD)
13FA3367	10-32 x 1 1/4 SHCS
10FA3700	10 SERIES ANCHOR CAM

\* For 10 series counterbore service, see page 325

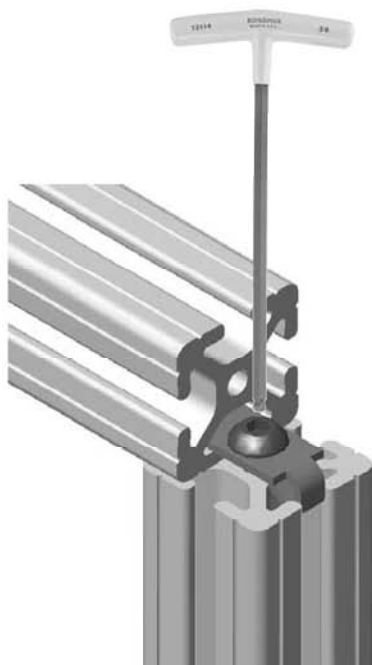
### MACHINING FOR END FASTENERS

- FOR TAPPING SERVICE SEE PAGE 324
- FOR ACCESS HOLE DRILLING SERVICE SEE PAGE 326

- HIDDEN CONNECTION
- GOOD FOR TIGHT SPACING
- HOLDS EXTRUSION AT 90°

**No Welding or Painting!**

*For proper tightening force, torque fastener to 17-22 ft-lbs*



### **FAZTEK ASSEMBLY TIP**

1. Set the clip on the end of the extrusion over the tapped hole.
2. Place the bolt through the clip and thread into the tapped hole.
3. Slide the bottom T-slot onto the clip of the mating extrusion.
4. Line up the access hole up with the head of the bolt.
5. Tighten the end fastener with a 5/32" "T" Handle Ball End Hex Wrench  
- Found on page 254 -