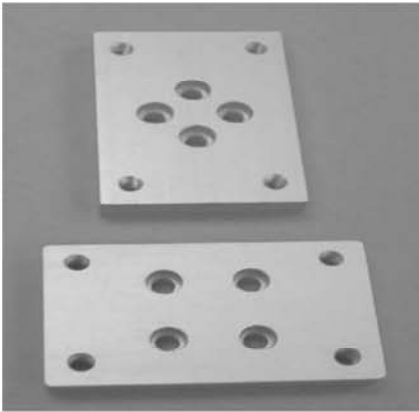


SECTION 12

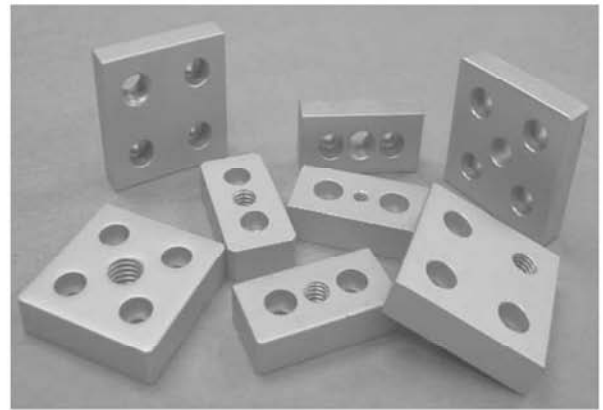
10 SERIES

BASE PLATES / FLOOR TO FRAME

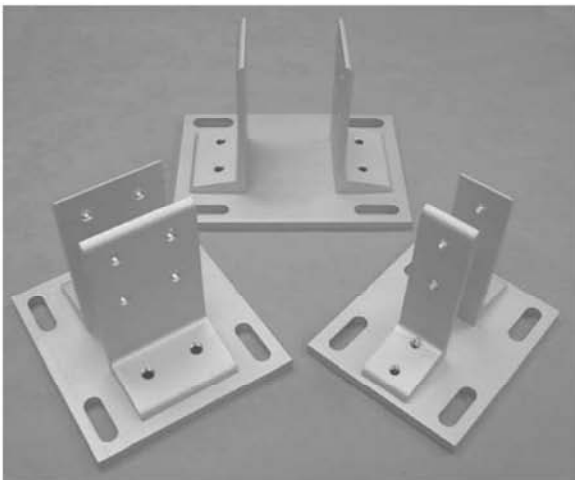
BASE PLATES FOR CASTERS



BASE PLATES FOR LEVELING FEET



DELUXE FLOOR MOUNT BASE PLATES

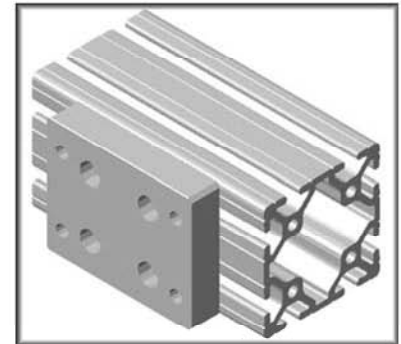
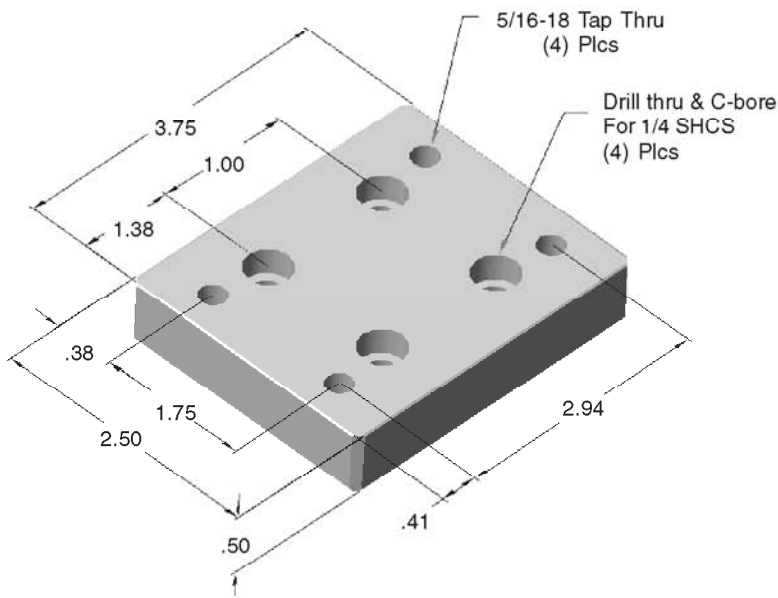


FLOOR MOUNT FEET

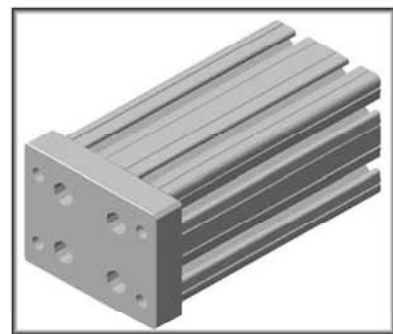


10BP2588

10 SERIES FLANGE MOUNT CASTER BASE PLATE



For T-Slot Mounting



For Extrusion End Mounting

- Bolts on to end of extrusion or to T-slot
- For mounting casters see pages 229-231
- For tapping service see page 324

RECOMMENDED HARDWARE FOR MOUNTING TO EXTRUSION T-SLOT

Qty	Description	Part Number
4	1/4-20 x 1/2 SHCS	13FA3303
4	1/4-20 ECONOMY T-NUT	10FA3121

RECOMMENDED HARDWARE FOR MOUNTING TO EXTRUSION END

Qty	Description	Part Number
4	1/4-20 x 3/4 SHCS	13FA3305

FOR FAST ASSEMBLY
USE 10FA3122



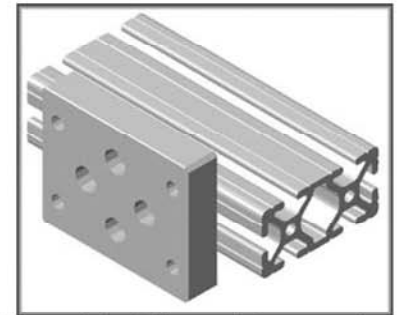
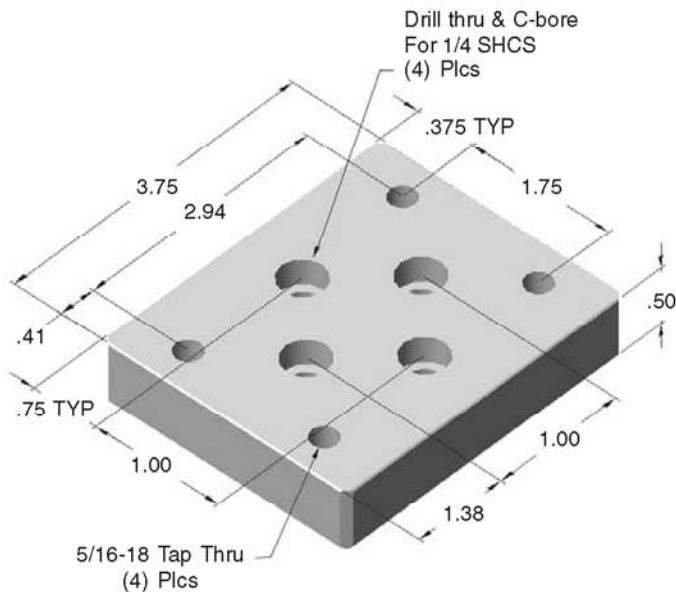
RECOMMENDED CASTERS FOR MOUNTING TO BASE PLATES

Pg #	Description	Part No.
229	4" SWIVEL CASTER W/ BRAKE	13CA8102
229	4" RIGID CASTER	13CA8103
229	5" SWIVEL CASTER W/ BRAKE	13CA8108
229	5" RIGID CASTER	13CA8110
229	3.5" SWIVEL CASTER W/ BRAKE	13CA8113
229	3.5" RIGID CASTER	13CA8114
229	5" RIGID CASTER	13CA8115
229	5" SWIVEL CASTER W/ BRAKE	13CA8116

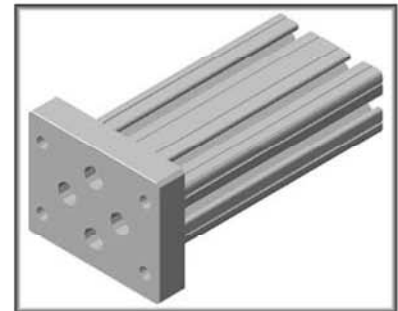
* SEE CASTER SECTION FOR RECOMMENDED HARDWARE TO MOUNT TO BASE PLATES

10BP2589

10 SERIES FLANGE MOUNT CASTER BASE PLATE



For T-Slot Mounting



For Extrusion End Mounting

- Bolts on to end of extrusion or T-slot
- For mounting casters see page 229-231
- For tapping service see page 161

RECOMMENDED HARDWARE FOR MOUNTING TO EXTRUSION T-SLOT

Qty	Description	Part Number
4	1/4-20 x 1/2 SHCS	13FA3303
4	1/4-20 ECONOMY T-NUT	10FA3121

RECOMMENDED HARDWARE FOR MOUNTING TO EXTRUSION END

Qty	Description	Part Number
4	1/4-20 x 3/4 SHCS	13FA3305

FOR FAST ASSEMBLY
USE 15FA3502

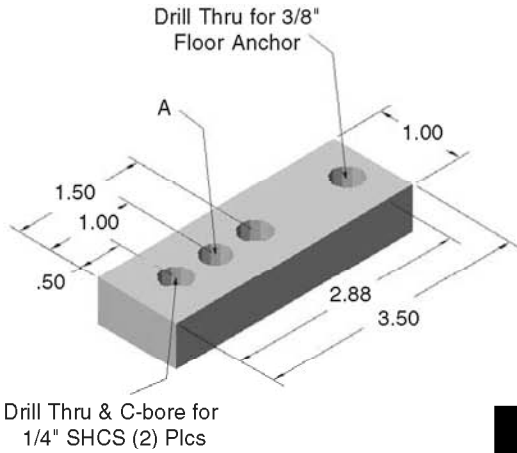


RECOMMENDED CASTERS FOR MOUNTING TO BASE PLATES

Pg #	Description	Part No.
229	4" SWIVEL CASTER W/ BRAKE	13CA8102
229	4" RIGID CASTER	13CA8103
229	5" SWIVEL CASTER W/ BRAKE	13CA8108
229	5" RIGID CASTER	13CA8110
229	3.5" SWIVEL CASTER W/ BRAKE	13CA8113
229	3.5" RIGID CASTER	13CA8114
229	5" RIGID CASTER	13CA8115
229	5" SWIVEL CASTER W/ BRAKE	13CA8116

* SEE CASTER SECTION FOR RECOMMENDED HARDWARE TO MOUNT TO BASE PLATES

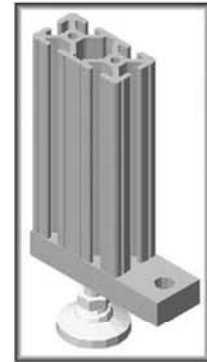
10EX1020 ANCHORING
BASE PLATE



Part No.	'A' Tap Thru
10BP2575	1/4-20
10BP2576	3/8-16

RECOMMENDED HARDWARE FOR MOUNTING TO EXTRUSION T-SLOT

Qty	Description	Part Number
2	1/4-20 x 1/2 SHCS	13FA3303
2	1/4-20 ECONOMY T-NUT	10FA3121



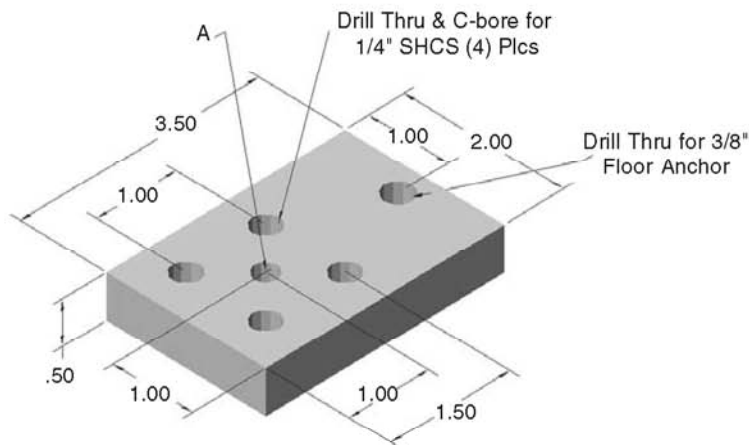
- Bolts on to end of extrusion or T-slot
- For leveling feet see page 234-235
- For tapping service see page 324

RECOMMENDED HARDWARE FOR MOUNTING TO EXTRUSION END

Qty	Description	Part Number
2	1/4-20 x 3/4 SHCS	13FA3305

Flr.-Frame

10EX2020 ANCHORING
BASE PLATE

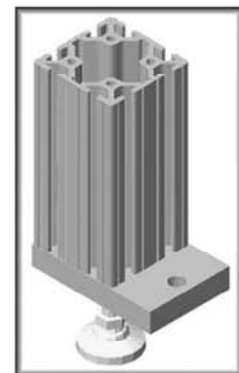


Part No.	'A' Tap Thru
10BP2577	3/8-16
10BP2578	1/2-13

RECOMMENDED HARDWARE FOR MOUNTING TO EXTRUSION T-SLOT

Qty	Description	Part Number
4	1/4-20 x 1/2 SHCS	13FA3303
4	1/4-20 ECONOMY T-NUT	10FA3121

FOR FAST ASSEMBLY
USE 10FA3122

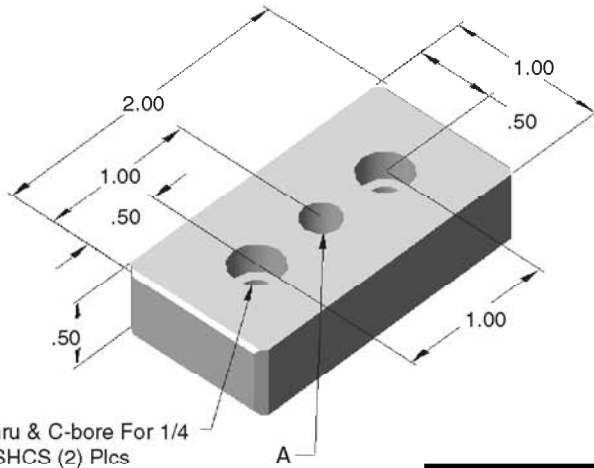


- Bolts on to end of extrusion or T-slot
- For leveling feet see page 234-235
- For tapping service see page 324

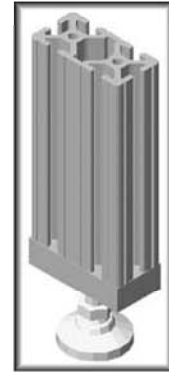
RECOMMENDED HARDWARE FOR MOUNTING TO EXTRUSION END

Qty	Description	Part Number
4	1/4-20 x 3/4 SHCS	13FA3305

10EX1020 BASE PLATE



Drill Thru & C-bore For 1/4 SHCS (2) Plcs



Part No.	'A' Tap Thru
10BP2564	1/4-20
10BP2565	3/8-16
10BP2566	7/16-14
10BP2567	1/2-13

- Bolts on to end of extrusion or T-slot
- For stem casters see page 228
- For leveling feet see page 234-235
- For tapping service see page 324

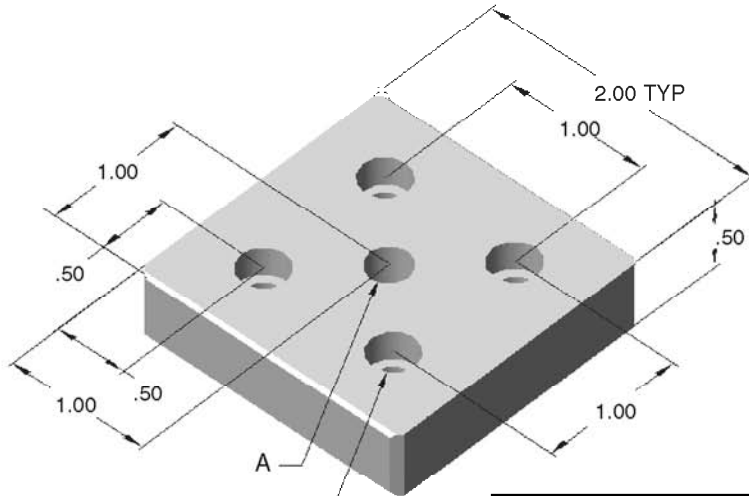
RECOMMENDED HARDWARE TO MOUNT TO EXTRUSION END

Qty	Description	Part Number
2	1/4-20 x 3/4 SHCS	13FA3305

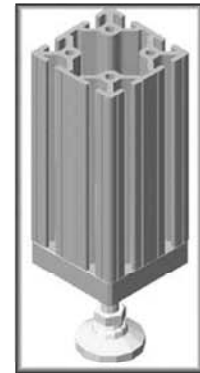
RECOMMENDED HARDWARE TO MOUNT TO EXTRUSION T-SLOT

Qty	Description	Part Number
2	1/4-20 x 1/2 SHCS	13FA3303
2	1/4-20 ECONOMY T-NUT	10FA3121

10EX2020 BASE PLATE



Drill Thru & C-bore For 1/4 SHCS (4) Plcs



Part No.	'A' Tap Thru
10BP2568	3/8-16
10BP2569	7/16-14
10BP2560	1/2-13
10BP2579	3/4-10

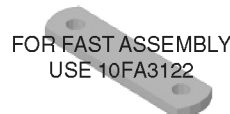
- Bolts on to end of extrusion or T-slot
- For stem casters see page 228
- For leveling feet see page 234-235
- For tapping service see page 324

RECOMMENDED HARDWARE FOR MOUNTING TO EXTRUSION END

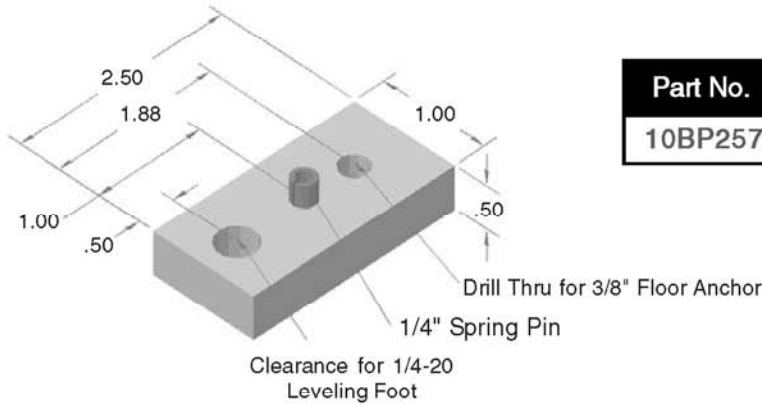
Qty	Description	Part Number
4	1/4-20 x 3/4 SHCS	13FA3305

RECOMMENDED HARDWARE FOR MOUNTING TO EXTRUSION T-SLOT

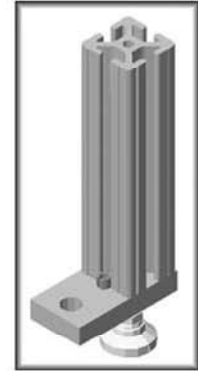
Qty	Description	Part Number
4	1/4-20 x 1/2 SHCS	13FA3303
4	1/4-20 ECONOMY T-NUT	10FA3121



10EX1010
ANCHORING BASE PLATE



Part No.	EXTRUSION
10BP2574	10EX1010

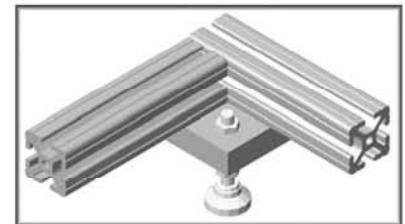
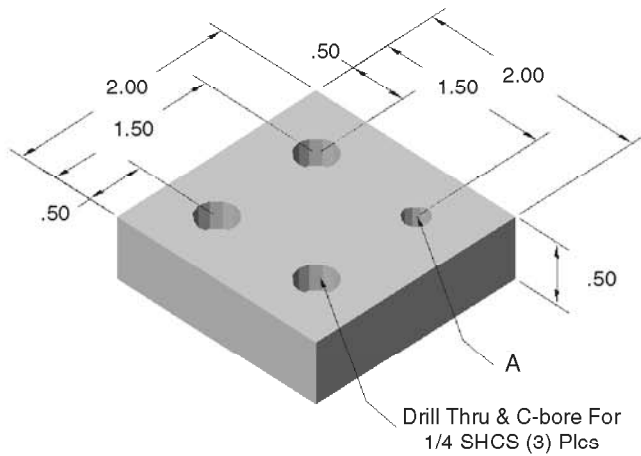


Flr.-Frame

No fasteners needed for assembly!
Spring pin is used for alignment, while the leveling foot fastens the base plate to the extrusion.

- Includes 1/4" spring pin for alignment
- For leveling feet see page 234-235
- For tapping service see page 324

10EX1010 BASE PLATE



Part No.	'A' Tap Thru
10BP2570	3/8-16
10BP2572	7/16-14
10BP2571	1/2-13
10BP2573	3/4-10

- Bolts on to end of extrusion or T-slot
- For stem casters see page 228
- For leveling feet see page 234-235
- For tapping service see page 324

RECOMMENDED HARDWARE
TO MOUNT TO EXTRUSION T-SLOT

Qty	Description	Part Number
3	1/4-20 x 1/2 SHCS	13FA3303
3	1/4-20 ECONOMY T-NUT	10FA3121



RECOMMENDED HARDWARE FOR
MOUNTING TO EXTRUSION END

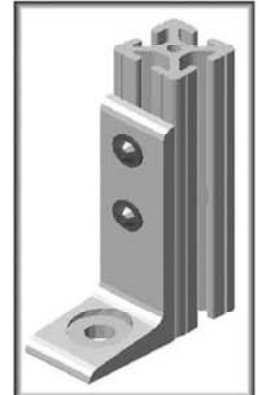
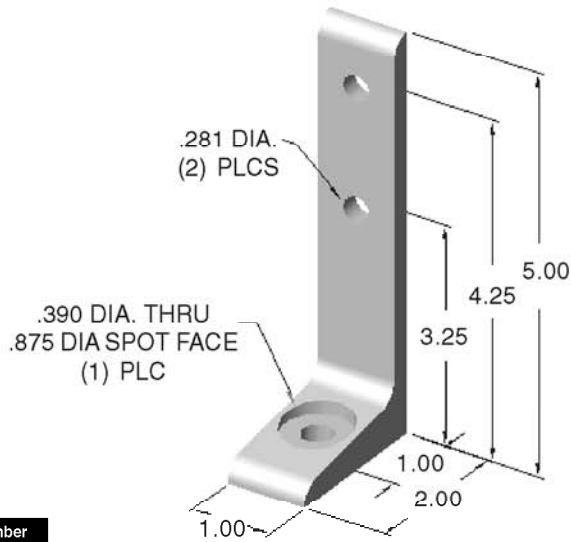
Qty	Description	Part Number
3	1/4-20 x 3/4 SHCS	13FA3305

10FF5611

10 SERIES
1" FLOOR MOUNT FOOT



FOR FAST ASSEMBLY
USE 10FA3122



For use with: 10EX1010,
10EX1020, 10EX1030

RECOMMENDED HARDWARE

Qty	Description	Part Number
2	1/4-20 x 1/2 FBHSCS	13FA3309
2	1/4-20 ECONOMY T-NUT	10FA3121

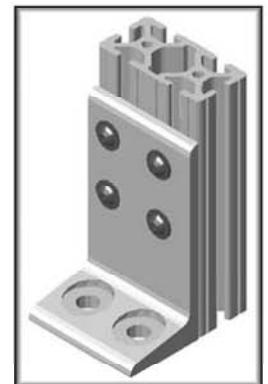
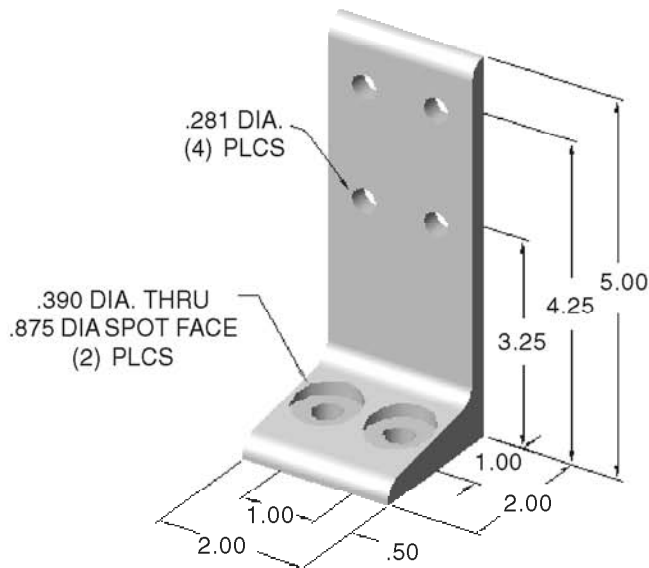
For additional fasteners and t-nuts, see pages 300-303

10FF5612

10 SERIES
2" FLOOR MOUNT FOOT



FOR FAST ASSEMBLY
USE 10FA3122



For use with: 10EX1020,
10EX2020, 10EX2040

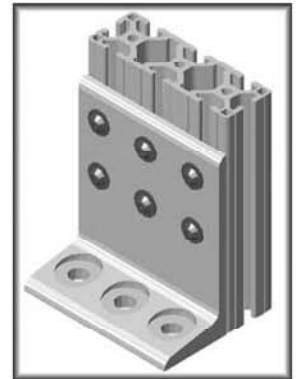
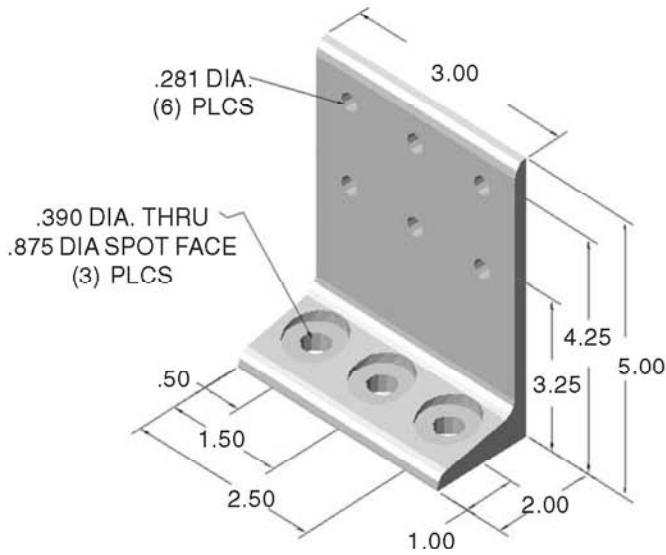
RECOMMENDED HARDWARE

Qty	Description	Part Number
4	1/4-20 x 1/2 FBHSCS	13FA3309
4	1/4-20 ECONOMY T-NUT	10FA3121

For additional fasteners and t-nuts, see pages 300-303

10FF5613

10 SERIES
3" FLOOR MOUNT FOOT



For use with: 10EX1030

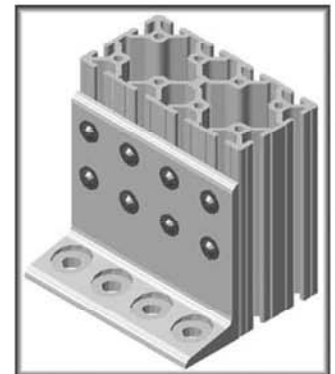
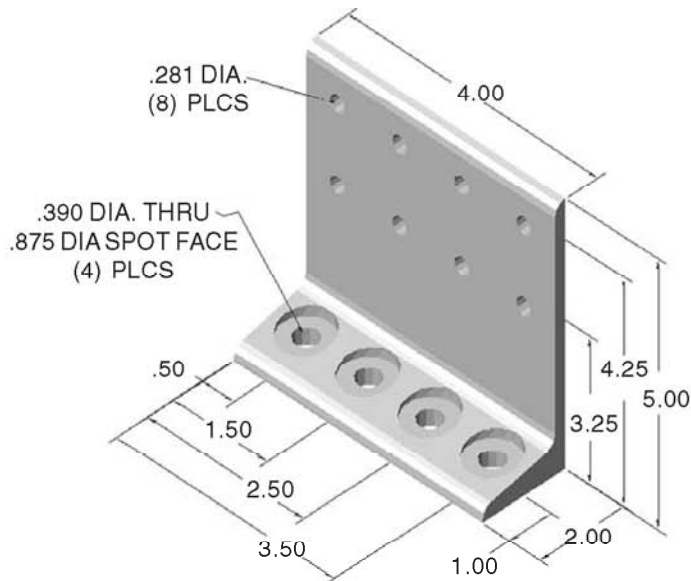
RECOMMENDED HARDWARE

Qty	Description	Part Number
6	1/4-20 x 1/2 FBHSCS	13FA3309
6	1/4-20 ECONOMY T-NUT	10FA3121

For additional fasteners and t-nuts, see pages 300-303

10FF5614

10 SERIES
4" FLOOR MOUNT FOOT



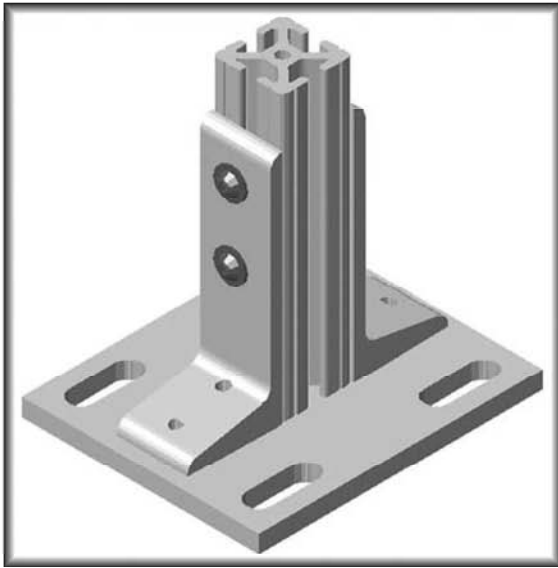
For use with: 10EX2040

RECOMMENDED HARDWARE

Qty	Description	Part Number
8	1/4-20 x 1/2 FBHSCS	13FA3309
8	1/4-20 ECONOMY T-NUT	10FA3121

For additional fasteners and t-nuts, see pages 300-303

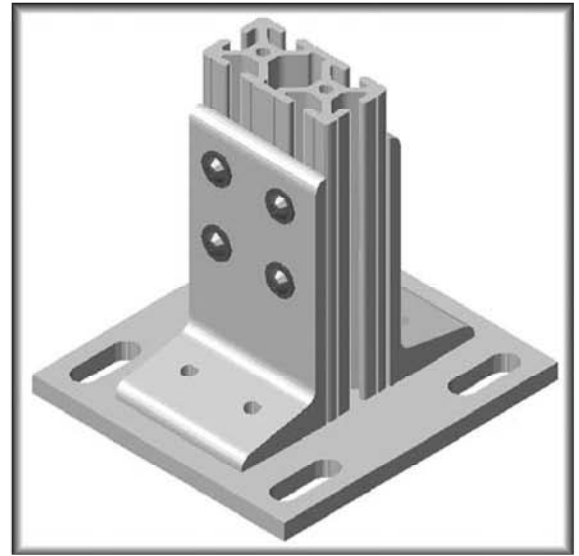
DELUXE FLOOR MOUNT BASE PLATES



10FF5820

10 SERIES

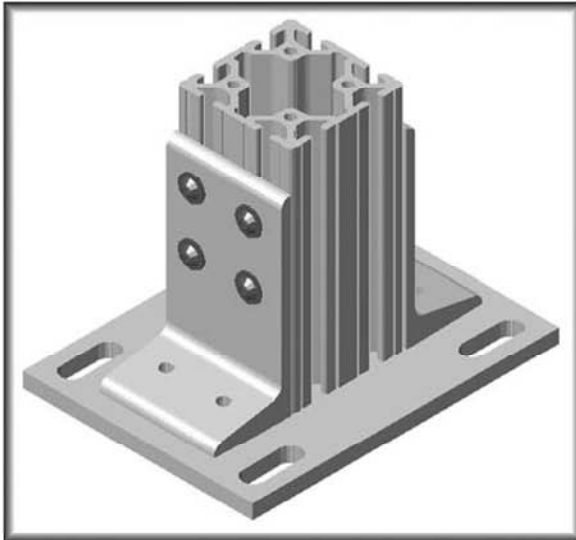
10EX1010 DELUXE FLOOR MOUNT BASE PLATE



10FF5821

10 SERIES

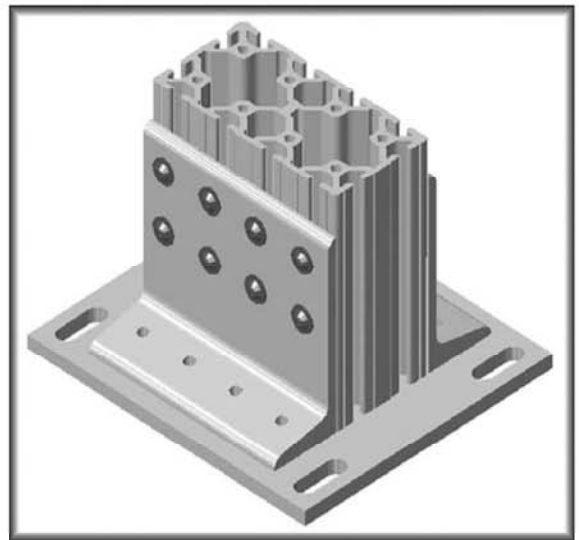
10EX1020 DELUXE FLOOR MOUNT BASE PLATE



10FF5823

10 SERIES

10EX2020 DELUXE FLOOR MOUNT BASE PLATE



10FF5824

10 SERIES

10EX2040 DELUXE FLOOR MOUNT BASE PLATE

- Mount your frame to the floor FAST
- Stabilize your frame
- Strong method of mounting your frame to the floor
- Easy vertical adjustment
- Base plate slotted for additional adjustment

For deluxe floor mount base plates dimensions, see pages 295–296

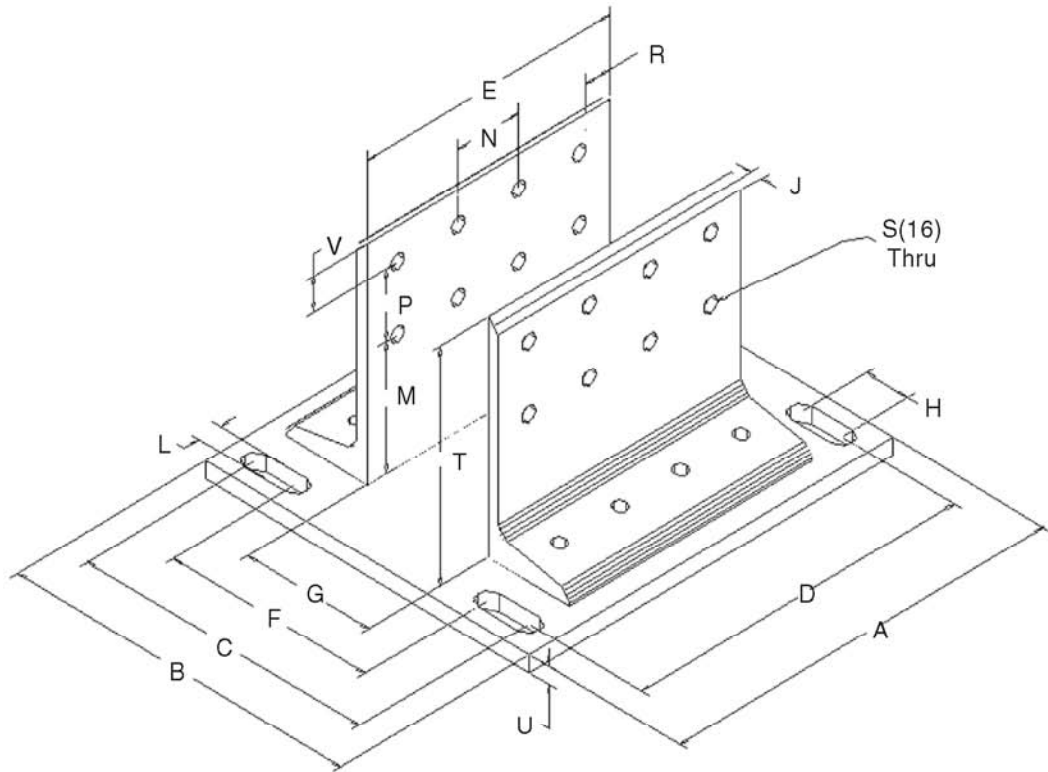
Dimensions for the deluxe floor mount base plates

Ref	10FF5820	10FF5821	10FF5823	10FF5824
A	4.00	5.50	5.50	7.50
B	5.50	5.50	6.50	6.50
C	4.25	4.25	5.25	5.25
D	2.75	4.25	4.25	6.25
E	1.00	2.00	2.00	4.00
F	2.25	2.25	3.25	3.25
G	1.00	1.00	2.00	2.00
H	1.00	1.00	1.00	1.00
J	.250	.250	.250	.250
L	.406	.406	.406	.406
M	3.25	3.25	3.25	3.25
N	N/A	1.00	1.00	1.00
P	1.50	1.50	1.50	1.50
R	.500	.500	.500	.500
S	.281	.281	.281	.281
T	5.00	5.00	5.00	5.00
U	.250	.250	.250	.250
V	.750	.750	.750	.750
Lbs.	.870	1.55	1.57	2.36

* See dimensional drawing on page 296 and reference back to the proper letter to find the dimension.

RECOMMENDED HARDWARE

PART #	DESCRIPTION	PART #	RECOMMENDED HARDWARE	QTY
10FF5820	10EX1010 FLOOR MOUNT BASE PLATES	13FA3309	1/4-20 x 1/2 FBHSCS	4
		10FA3122	1/4-20 DOUBLE T-NUT	2
10FF5821	10EX1020 FLOOR MOUNT BASE PLATES	13FA3309	1/4-20 x 1/2 FBHSCS	8
		10FA3122	1/4-20 DOUBLE T-NUT	4
10FF5823	10EX2020 FLOOR MOUNT BASE PLATES	13FA3309	1/4 20 x 1/2 FBHSCS	8
		10FA3122	1/4-20 DOUBLE T-NUT	4
10FF5824	10EX2040 FLOOR MOUNT BASE PLATES	13FA3309	1/4-20 x 1/2 FBHSCS	16
		10FA3122	1/4-20 DOUBLE T-NUT	8



Floor Mount Feet



Heavy Duty Casters



Leveling Feet

ASSEMBLY TEAM

"LET US BUILD YOUR PROJECT FOR YOU"

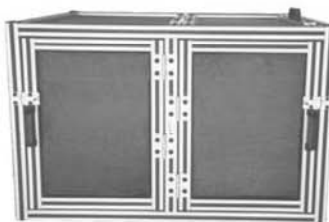
ASSEMBLY CAPABILITIES

MECHANICS / SPECIALISTS FOR T-SLOTTED ALUMINUM EXTRUSIONS ON STAFF READY TO PUT YOUR PROJECT TOGETHER!



Flr.-Frame

WE WILL ASSEMBLE YOUR PROJECT FAST!



Order one at a time,

OR

Order enough for a full production line!



GET IT THE WAY YOU WANT IT!

SUBASSEMBLIES

COMPLETE ASSEMBLIES

INTEGRATED PROJECTS

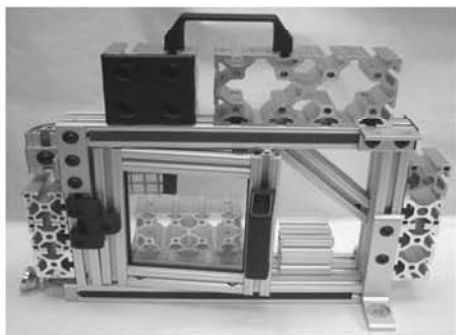
FOCUS ON EXCELLENCE:

- FAST TURNAROUND
- SAVE TIME AND MONEY
- COST EFFECTIVE
- FRAMES BUILT SQUARE
- CLEAN / BURR FREE PROJECTS
- PROJECTS BUILT ON NON-SCRATCH SURFACES

Value Add
Service Number
13VA9000

WE ALSO SPECIALIZE IN:

- NATIONWIDE SHIPPING
- CUSTOM SKIDS / CRATES
- DOING IT RIGHT
- FAST KITS



HANDHELD DEMO UNIT

13MK4001U – Unassembled

* To learn how to assemble projects on a smaller scale, call us at 260-482-7544 for details on how to order your very own Handheld Demo Unit.